

SOUNDSTREAM

25th
Anniversary



2006

SOUNDSTREAM

<http://www.soundstream.com>

CONTENTS



XXX SERIES Amplifiers & Woofers 3-4



REFERENCE SERIES Amplifiers 5-6



TARANTULA SERIES Amplifiers 7-8



PICASSO SERIES Amplifiers 9-10



XSTREAM SERIES Amplifiers 11-12



R-1 REFERENCE Woofers 13-14



SPLX SERIES Woofers 15



T4 SERIES Woofers 16



REFERENCE SERIES Woofers 17

So you think you've heard it all. But have you heard the Soundstream story from the perspective of design & development?

In the mid 80's Soundstream developed the REFERENCE series amplifiers, winning awards all over the world and garnishing praise from audiophiles here in the US, Japan and across Europe. No other car amplifier had a stronger bass-line, crisper high frequencies, clear and transparent mid range, and could automatically select the most suitable power supply mode for its best operation according to the actual dynamic load demands. Even today no other company has either attempted to replicate or produce an amplifier with a more intelligent power as the design and features found in the Reference amplifiers.

In 2001 Soundstream developed a new breed of amplifiers (TARANTULA, Human Reign, and Van Gough). This really took the breath away from the competition, first in looks and design, and then in unprecedented performance, and a force to reckon within the sound off arena went to TARANTULA. In 2004 ,German magazine called Human Reign : "The best car amplifier ever made in history". See the re-introduction of the best sounding car amplifier EVER made (don't blame me, I just read this on line), together with a new push to retake our spot at the top, with new accompanying REF separates and drivers.

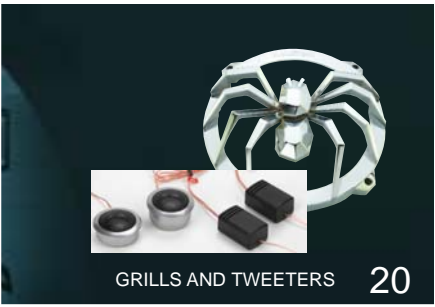
You might think that we are a bunch of mad, and obsessed engineers, who basically live to make the world's best amplifiers, year after year, and you might be right. But that is what makes us Soundstream.



PICASSO SERIES Woofers 18



XSTREAM SERIES Woofers 19



GRILLS AND TWEETERS 20



COMPONENT SYSTEMS 21-24



FULL RANGE SPEAKERS 25-27



HUMAN REIGN SERIES Amplifiers 28



SIGNAL PROCESSORS 29-30



CAPACITORS & ACCESSORIES 31-33



MARINE SERIES 34-35

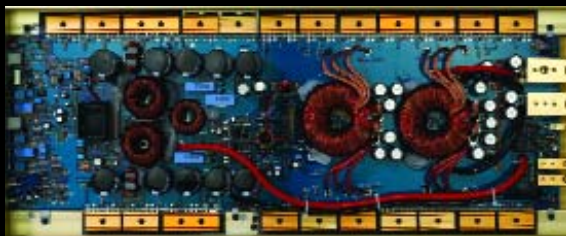
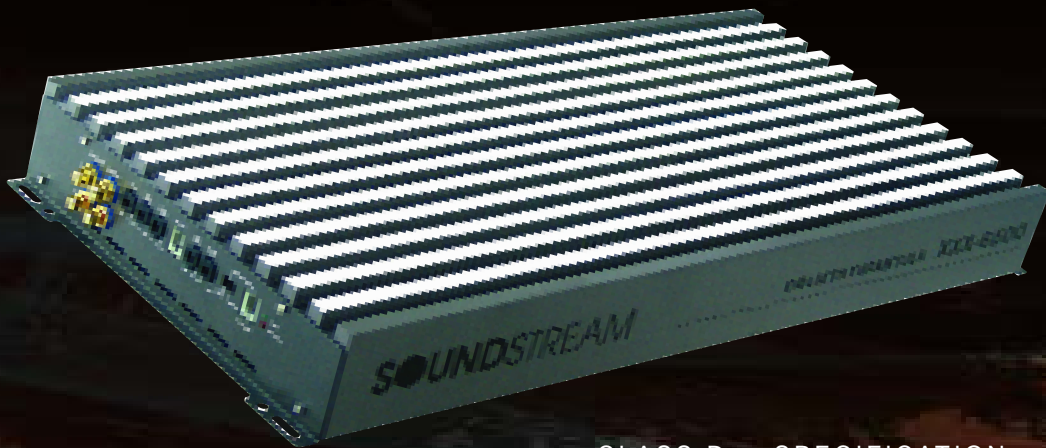
CONTENTS-----VIDEO

ceiling combos	36-38
ceiling monitors	38-39
headrest / sunvisor	40
in-dash dvd monitors	41-42
in-dash dvd	43
accessories	44-45
pop products	46



XXX SERIES AMPLIFIERS - WOOFERS

To beat the competition, you have to think "Big", but most of all you have to go "Nuclear". Soundstream engineers designed the XXX-6500D amplifier to produce 6,500 bone-crushing watts in one heatsink. If 6,500 watts aren't enough, strap 2 of the XXX-6500D together on a 2-ohm load and blow away the competition with 13,000 watts of mind melting power. Can your woofers handle the power?



Inside the XXX AMP

CLASS D - SPECIFICATION

	XXX-6500D	XXX-10000D
OUTPUT (WATTS): RMS @ 4-ohms	3400	5500
RMS @ 2-ohms	4800	7500
RMS @ 1-ohm	6500	10000
THD :	1.0%	1.0%
FREQ. RESPONSE (Hz) :	5 - 250	5 - 250
S/N RATIO:	>80dB	>80dB
DAMPING FACTOR:	>350	>350
INPUT SENSITIVITY:	0.5-10 Volts	0.5-10 Volts
LOW-PASS SLOPE:	18dB	18dB
LOW-PASS FREQUENCY (Hz) :	40 - 160	40 - 160
SUBSONIC FILTER SLOPE:	18dB	18dB
SUBWOOFER EQ @ 45Hz:	0 - 18dB	0 - 18dB
Dimensions(In Inches):	11.5x2.7x24.5	11.5x2.7x27.5
• Souce Voltage	12-18NDC	

Soundstream acoustical engineers developed the XXX-15, XXX-18 sub-woofer to handle immense amounts of power. This full-throttle innovation puts it in a class by itself.

Utilizing high temperature glues along with a 4", flat wound, copper clad aluminum voice coil to keep them from critical mass melt down.

If you're looking for sonic terror, you need to stack the deck with XXX.



FEATURES

- Non pressed UV coated cone
- Aero dynamic machined pole piece
- Chrome top & bottom plates
- cast basket
- Aluminum voice coil former
- Copper clad Aluminum voice coil
- Thick & dense foam surround
- Dual nomex spiders
- Integrated tinsel leads

SPECIFICATION	XXX-15	XXX-18
RMS POWER (WATTS) :	8500	10000
VOICE COIL DIAMETER(INCHES):	4.04.0	
MAGNET STRUCTURE (Oz.) :	475	475
FREQ. RESPONSE (Hz) :	20 - 300	20-300
SPL (dB) :	89	90
HOLE SIZE (INCHES) :	14.25	17.25
RECOMMENDED ENCLOSURE TYPE:	Vented	Vented

• For custom parameters & enclosure sizes, call Soundstream's Technical Dept. for Authorized woofer serial number holders only

REFERENCE SERIES

AMPLIFIERS

What exactly is a 'REFERENCE standard'? Well it's a bench-mark you look-up to and endeavor to achieve; the standard you adopt as your own or refer to; and even by which you may chose to judge your own performance. Prior to the inception of Soundstream's REFERENCE series of amplifiers, no other company had ever brought either of these concepts to the fore: all connections on one side, fully adaptable power supply for either SQ or SPL applications, the use of 1% and 2% tolerance resistors and separate L & R level adjustments...yes we started it all and don't forget that! Today thankfully, advanced technologies in small-signal processing and MEGA-FET power devices, makes it possible for a complete and faithful re-introduction of these phenomenal sound processing machines, minus the added cost of 2% resistors for example and high-count B-FET devices.

So, Soundstream is the absolute unmitigated FIRST to establish an audio amplifier REFERENCE standard for all others to follow and consequently, set it self apart from the rest that worked! There are definitely a lot of copy-cats out there today; trying to "steal our thunder"; but not to worry, we've huddled & planned for the follow-up, enter the new REFERENCE (encore) series:

Every a bit a chip-off-the-old-block in terms of flawless sound reproduction PLUS; we have gone to work to introduce some serious enhancements like these: 4.5:1 Power Supply capacity to audio output power ratio, laser-cut precision gapped-core toroidal transformers, polystyrene caps in the input stages, high-speed JFET OP amps with high CMRR factors and precision tracking VRs.



- RUBI™ (Rapid-Use Branched Impulse) proprietary power supply topology
- STACT™ (Stabilized Apex Current Topology) Reduces power supply stress by 50%
- Trident™ amplifier protection topology
- Ultra-Low ESR Capacitance Bank ensures rapid power delivery for dynamic peaks
- Hawkins Bass Control™ Proprietary bass equalization topology
- IDI™ (Intelligent Distress Indicator) gives visual indication of amplifier protection status
- Harmonic Bass Alignment™ produces tighter, more accurate bass
- Fully regulated MOSFET power supply
- Triple Darlington Output Circuitry
- BIP™ Bias Input Protection
- Rail Stabilization Protection Circuitry
- Bi-linear selectable two-way crossovers for amplifier and line outputs
- Continuously Variable High and Low Pass Crossovers
- Balanced Line Inputs for the Highest level of Noise Rejection
- Gold RCA Inputs and Outputs
- Gold 2-gauge Power Connectors
- Tri-mode operation



SPECIFICATION	REF300.2	REF620.2	REF800.2	REF1600.2
No. OF CHANNELS:	2	2	2	2
OUTPUT (watts): RMS @ 4 Ohms	85x2	175x2	240x2	480x2
RMS @ 2 Ohms	150x2	310x2	400x2	800x2
RMS Bridged @ 4 Ohms	300 X 1	620 x 2	800 X 1	1600 X 2
T.H.D.:	< 0.02%	< 0.02%	< 0.02%	< 0.02%
SIGNAL TO NOISE RATIO:	> 115dB	> 115dB	> 115dB	> 115dB
DAMPING FACTOR:	> 500	> 500	> 500	> 500
FREQUENCY RESPONSE:	10 - 70K	10 - 70K	10 - 70K	10 - 70K
INPUT SENSITIVITY (VOLTS):	0.15 - 12.0	0.15 - 12.0	0.15 - 12.0	0.15 - 12.0
CROSSOVER SLOPE	18dB	18dB	18dB	18dB
CROSSOVER FREQUENCY (Hz):	30 - 4k	30 - 4k	30 - 4k	30 - 4k
DIMENSIONS (INCHES):	10x2.5x10	10 x 2.5 x 12.7	10 x 2.5 x 16	10 x 2.5 x 19
	REF480.4	REF800.4	REF880.5	
No. OF CHANNELS:	4	4	5	
OUTPUT : RMS @ 4 Ohms (Watts)	70x4	125x4	70 x 4, 240 x 1 (sub)	
RMS @ 2 Ohms (Watts)	120x4	200x4	120 x 4, 400 x 1 (sub)	
RMS Bridged @ 4 Ohms (Watts)	240 x 2	400 x 2	240 x 2, 400 x 1 (sub)	
T.H.D.:	< 0.02%	< 0.02%	< 0.02%	
SIGNAL TO NOISE RATIO:	> 115dB	> 115dB	> 115dB	
DAMPING FACTOR:	> 500	> 500	> 500	
FREQUENCY RESPONSE (Hz) :	10Hz - 70k	10Hz - 70k	10Hz - 70k	
INPUT SENSITIVITY (VOLTS):	0.15 - 12.0	0.15 - 12.0	0.15 - 12.0	
CROSSOVER SLOPE :	18dB	18dB	18dB	
CROSSOVER FREQUENCY (Hz) :	30 - 4k	30 - 4k	30 - 4k	
DIMENSIONS (INCHES):	10 x 2.5 x 12	10 x 2.5 x 16	10 x 2.5 x 19	

AMPLIFIERS

TARANTULA SERIES



When sound quality and performance is a must, the Tarantula is the most aggressive amplifier on the market today. The Tarantula amplifiers feature SMT Topology along with 3 to 1 power supply ratios that give the listener extreme amounts of headroom, speaker control and sonic accuracy. When only the best will do, Tarantula is your first choice.

FEATURES

- Variable hi pass, band pass, low pass filter
- Variable 18dB bass boost
- Double side glass epoxy circuit board
- PWM mosfet power supply
- Tri-guard amplifier protection
- SMT cooling fan built in
- Tri-mode capable
- Line output



SPECIFICATION

	TRA340.2	TRA560.2	TRA800.2	TRA1000.2
No. OF CHANNELS:	2	2	2	2
OUTPUT (watts): RMS @ 4 Ohms	85x2	140x2	200x2	250x2
RMS @ 2 Ohms	170x2	280x2	400x2	500x2
RMS Bridged @ 4 Ohms	340 X 1	560 x 1	800 X 1	1000 X 1
T.H.D.:	< 0.02%	< 0.02%	< 0.02%	< 0.02%
SIGNAL TO NOISE RATIO:	> 115dB	> 115dB	> 115dB	> 115dB
DAMPING FACTOR:	> 500	> 500	> 500	> 500
FREQUENCY RESPONSE:	10 - 50K	10 - 50K	10 - 50K	10 - 50K
INPUT SENSITIVITY (VOLTS):	0.15 - 12.0	0.15 - 12.0	0.15 - 12.0	0.15 - 12.0
CROSSOVER SLOPE	18dB	18dB	18dB	18dB
CROSSOVER FREQUENCY (Hz):	50 - 5k	50 - 5k	50 - 5k	50 - 5k
DIMENSIONS (INCHES):	10.75x2.25x14	10.75x2.25x18	10.75x2.25x21.5	10.75x2.25x22.5
	TRA1400.2	TRA680.4	TRA960.4	TRA880.5
No. OF CHANNELS:	2	4	4	5
OUTPUT (watts): RMS @ 4 Ohms	350x2	85x4	120x4	60x4+200x1
RMS @ 2 Ohms	700x2	170x4	240x4	120x4+400x1
RMS Bridged @ 4 Ohms	1400 X 1	340 x 2	480 X 2	240 X 2+400x1
T.H.D.:	< 0.02%	< 0.02%	< 0.02%	< 0.02%
SIGNAL TO NOISE RATIO:	> 115dB	> 115dB	> 115dB	> 115dB
DAMPING FACTOR:	> 500	> 500	> 500	> 500
FREQUENCY RESPONSE:	10 - 50K	10 - 50K	10 - 50K	10 - 50K
INPUT SENSITIVITY (VOLTS):	0.15 - 12.0	0.15 - 12.0	0.15 - 12.0	0.15 - 12.0
CROSSOVER SLOPE	18dB	18dB	18dB	18dB
CROSSOVER FREQUENCY (Hz):	50 - 5k	50 - 5k	50 - 5k	50 - 5k
DIMENSIONS (INCHES):	10.75x2.25x25	10.75x2.25x18	10.75x2.25x25	10.75x2.25x23.8

AMPLIFIERS

PICASSO SERIES

Picasso amplifiers exude Performance and Quality with a 2.5 to 1 power supply ratios and superior damping factors for excellent woofer control under high-stress applications. With both class "A/B" and class "D" amplifiers to fit any application, Picasso is the answer to loud and clear sound reproduction.

Class A/B Amp Features

Fully regulated MOSFET power supplies
PWM circuitry
Tri-guard amplifier protection
IDI™ (Intelligent Distress Indicator) gives a visual indication of the amplifiers protection status
Platinum RCA inputs and outputs
Built-in Output Selectable crossovers for inputs and outputs (Hi/Full/Low)
Continuously variable high and low-pass crossovers
Variable subwoofer equalizer
Phase inversion switch (0 - 180°)
OEM floating ground input
Platinum 4-gauge power connectors
Tri-mode operation

Class D Amp Features

TST™ (Twin Stack Technology) Allows 2 amplifiers to drive 1 voice coil, effectively doubling the power
High quality FR-4 circuit board
Class D circuitry
Continuously variable low-pass crossover
Continuously variable subsonic filter
Variable subwoofer equalizer
Platinum 2-gauge power connectors
Accepts up to 16VDC power input
1-ohm stability
Includes Remote Bass Boost Control



Remote Bass Boost Control



2 - CHANNEL AMP SPECIFICATION	PCA2.130	PCA2.200	PCA2.260	PCA2.360	PCA2.520	PCA2.760
No. OF CHANNELS:	2	2	2	2	2	2
OUTPUT (WATTS): RMS @ 4-ohms	40x2	60x2	80x2	110x2	160x2	220x2
RMS @ 2-ohms	65x2	100x2	130x2	180x2	260x2	380x2
RMS @ 4-ohm Mono	130x1	200x1	260x1	360x1	520x1	760x1
THD:	0.02%	0.02%	0.02%	0.02%	0.02%	0.02%
FREQ. RESPONSE (Hz) :	10 -30k	10 -30k	10 -30k	10 -30k	10 -30k	10 -30k
S/N RATIO:	>97dB	>97dB	>97dB	>97dB	>97dB	>97dB
DAMPING FACTOR:	>200	>200	>200	>200	>200	>200
INPUT SENSITIVITY:	0.2-6.0V	0.2-6.0V	0.2-6.0V	0.2-6.0V	0.2-6.0V	0.2-6.0V
CROSSOVER SLOPES:	12dB	12dB	12dB	12dB	12dB	12dB
CROSSOVER FREQS: High-Pass (Hz)	50 - 600	50 - 600	50 - 600	50 - 600	50 - 600	50 - 600
Low-Pass (Hz)	50 - 150	50 - 150	50 - 150	50 - 150	50 - 150	50 - 150
SUBWOOFER EQ:	0 - 18dB	0 - 18dB	0 - 18dB	0 - 18dB	0 - 18dB	0 - 18dB
SUBWOOFER EQ FREQ. (Hz) :	40 - 120	40 - 120	40 - 120	40 - 120	40 - 120	40 - 120
DIMENSIONS (INCHES) :	11x2.5x7.3	11x2.5x9	11x2.5x11	11x2.5x13.0	11x2.5x18.5	11x2.5x20.5

4 & 5 CHANNEL AMP SPECIFICATION	PCA4.260	PCA4.400	PCA4.520	PCA5.540	PCA1000D	PCA1500D	PCA2000D	PCA3500D
No. OF CHANNELS:	4	4	4	5	1	1	1	1
OUTPUT (WATTS): RMS @ 4-ohms	40x4	60x4	80x4		60x4, 110x1	500x1	800x1	1100x1
RMS @ 2-ohms	65x4	100x4	130x4		100x4, 180x1	800x1	1100x1	1500x1
RMS @ 4-ohm Mono	130 x 2	200x2	260x2		180x2, 180x1		1000x1	1500x1
							2000x1	3500x1
THD:	0.02%	0.02%	0.02%		0.02%		0.5%	<0.5%
							<0.5%	<0.5%
FREQ. RESPONSE (Hz) :	10 - 30k	10 - 30k	10 - 30k		10 - 30k		5 - 250Hz	5 - 250Hz
S/N RATIO:	>97dB	>97dB	>97dB		>97dB		>85dB	>85dB
							>85dB	>85dB
DAMPING FACTOR:	>200	>200	>200		>200		>200	>200
							>200	>200
INPUT SENSITIVITY:	0.2-6.0V	0.2-6.0V	0.2-6.0V		0.2-6.0V		0.2-6.0V	0.2-6.0V
							0.2-6.0V	0.2-6.0V

AMPLIFIERS

XSTREAM SERIES

Xstream amplifiers are the results of brightest engineers using the best equipment to get the job done. The Xstream bass amplifiers will produce more bass per watt than any other amplifier in the Soundstream line and possibly the world, while the full-range amplifiers give your highs the bright and accurate sound that you like.



NEW CHROME END CAPS □ LOGOS

FEATURES

- Bi-linear selectable crossovers for inputs and outputs (Hi/Full/Low)
- Continuously variable high and low-pass crossovers
- Variable subwoofer equalizer
- Phase inversion switch (0 - 180°)
- Platinum 4-gauge power connectors
- Tri-mode operation



2 - CHANNEL AMP SPECIFICATION

	XTA180.2	XTA240.2	XTA360.2	XTA480.2	XTA600.2	XTA880.2
No. OF CHANNELS:	2	2	2	2	2	2
OUTPUT (WATTS): RMS @ 4-ohms		45x2	60x2	90x2	120x2	150x2 220x2
RMS @ 2-ohms	90x2	120x2	180x2	240x2	300x2	440x2
RMS @ 4-ohm Mono	180X1	240X1	360X1	480X1	600X1	880X1
THD:	0.05%	0.05%	0.05%	0.05%	0.05%1	0.05%
FREQ. RESPONSE (Hz) :	10 -30k	10 -30k	10 -30k	10 -30k	10 -30k	10 -30k
S/N RATIO:	>96dB	>96dB	>96dB	>96dB	>96dB	>96dB
DAMPING FACTOR:	>200	>200	>200	>200	>200	>200
INPUT SENSITIVITY:	0.1-3.0V	0.1-3.0V	0.1-3.0V	0.1-3.0V	0.1-3.0V	0.1-3.0V
CROSSOVER SLOPES:	12dB	12dB	12dB	12dB	12dB	12dB
CROSSOVER FREQS: High-Pass (Hz)		30 - 500	30 - 500	30 - 500	30 - 500	30 - 500 30 - 500
Low-Pass (Hz)	30-150	30-150	30-150	30-150	30-150	30-150
SUBWOOFER EQ:	0 - 18dB	0 - 18dB	0 - 18dB	0 - 18dB	0 - 18dB	0 - 18dB
DIMENSIONS (INCHES) :	7x10x2.5	8.25X10X2.5	11x10x2.5	13.8x10x2.5	20.1X10X2.5	21.75X10X2.5

4 & 5 CHANNEL AMP SPECIFICATION

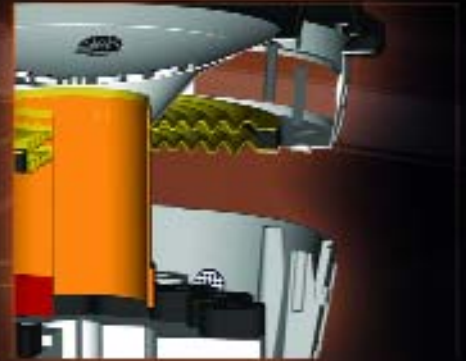
	XTA 360.4	XTA 480.4	XTA 720.4	XTA 600.5
No. OF CHANNELS:	4	4	4	5
OUTPUT (WATTS): RMS @ 4-ohms	45x4	60x4	90x4	45x4, 120x1
RMS @ 2-ohms	90x4	120x4	180x4	90x4, 240x1
RMS @ 4-ohm Mono	180 x 2	240x2	360x2	180x2, 240x1
THD::	0.05%	0.05%	0.05%	0.05%
FREQ. RESPONSE (Hz) :	10 - 30k	10 - 30k	10 - 30k	10 - 30k
S/N RATIO:	>96dB	>96dB	>96dB	>96dB
DAMPING FACTOR:	>200	>200	>200	>200
INPUT SENSITIVITY:	0.1-3.0V	0.1-3.0V	0.1-3.0V	0.1-3.0V
CROSSOVER SLOPES:	12dB	12dB	12dB	12dB
CROSSOVER FREQUENCIES: High-Pass (Hz)		30 - 500	30 - 500	30 - 500 30 - 500
Low-Pass (Hz)	30 - 150	30 - 150	30 - 150	30 - 150
SUBWOOFER EQ:	0 - 18dB	0 - 18dB	0 - 18dB	0 - 18dB
DIMENSIONS (INCHES):	11X10X2.5	13.8x10x2.5	20.1X10X2.5	20.1X10X2.5

Reference R1

introduction

Soundstream's flagship, the "R1" woofer is probably the most revolutionized woofer you will ever see in this century. It uncouples from the norm in so many ways you would think we invested the mind of 100 rocket scientists. Instead we took the knowledge and experience of the ones who know what it takes to make an uncompromised product and still offer all the "Frills and Thrills" of looks but, keep the performance and reliability expected of us. You can say the R1 can walk the walk and talk the talk with out the "Hiccup" of an inferior match.

Try a two element motor for size, that's right we used neodymium for its ability to produce stronger magnetic fields and high grade ferrite for its heat manageability. Coupled together with a CCA (Copper Clad Aluminum) wire coil on an aluminum former, joined together with a dampened aluminum cone and dust cap assembly and suspended with a large outer radius rubber surround and mirrored NOMEX spiders with integrated flat tinsel leads, this woofer can take a beating from your daily thrasher or provide the ambience of reinforced low frequencies to the audiophile listener.



COMMON FEATURES:

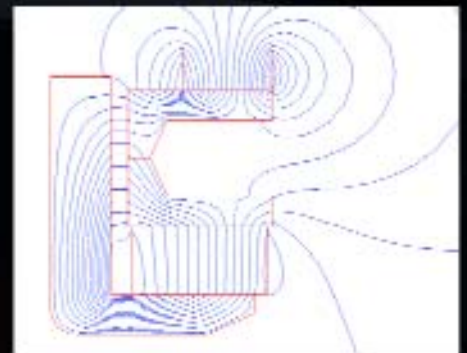
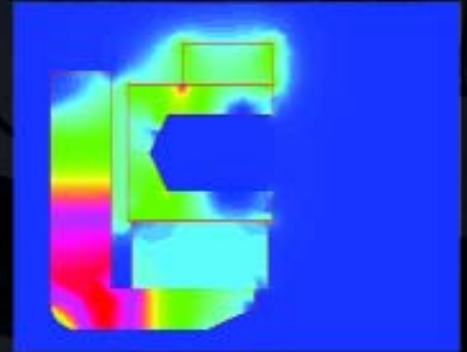
- Dual 3" Flat Wire WouNd Voice COil
- Copper Clad Aluminum Voice Coil Wire
- Dual Layer Aluminum Voice Coil Former
- All In One Discrete Mount Terminal
- Tall Motor Gap for extended X-Max
- Dual Large High Temp Ferrite Magnets
- Integrated Aluminum Motor Heat Sink
- Stamped ALuminum Cone and Dust Cap for Added Heat Dissipation.
- Large Diameter Surround for Added Cone Surface Area
- Dual Mirror Stacked Spiders with Integrated Tinsel Leads
- Secondary Stamped Steel Basket for Easy Re-Coning

Reference R1

design features

DESIGN FEATURES

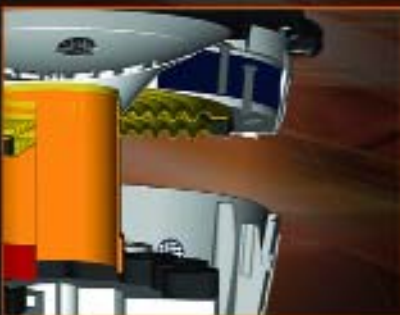
- Basket:** 2mm Stamp Steel Re-cone Frame with heavy epoxy Powder Coat Finish.
- Connection:** All In One Side Molded Discrete Mount Screw Type Terminal.
- Motor:** Patent Pending D.U.F. (Dual Under hung Flux Plates) Design housed in a cast aluminum cover with heavy epoxy Powder Coat Finish.
- Magnet:** Dual 100oz ferrite magnet rings.
- Heat Sink:** Patent Pending Washer Aluminum Heat Sink.
- Ventilation:** Pole Piece Sliced to Release Heat and Pressure from under the voice coil.
- Voice Coil:** 3" Parallel Windings of Copper Clad Aluminum wire wrapped around a dual layer, reinforced Aluminum former.
- Spider:** Dual Mirror Stacked NOMEX Spiders with integrated flat tinsel leads.
- Diaphragm:** Reinforced Stamped Aluminum Cone.
- Dust Cap:** Stamped Aluminum Concave for added structural integrity.
- Surround:** One Piece Glue-Less Santoprene Rubber Surround for easy field servicing.



R1-12L

R1-15L

Wiring =	Dual 2		Dual 2	
NomZ =	2	Ohm	2	Ohm
Sd =	0.054	sqM]	0.0881	sqM]
Revc =	0.85	Ohm	0.85	Ohm
Levc =	1	mH	1	mH
BL =	9.87	TxM	12.6	TxM
Vas =	67	Liter	178	Liter
Cms =	162	uM/N	162	uM/N
Mms =	250	Grams	400	Grams
Fo =	25	Hz	20	Hz
Qms =	9		9	
Qts =	0.343		0.266	
no =	0.33		0.258	
SPL@1W =	0.295	%	0.499	%
SPL@2.83V =	86.85	dB	89.13	dB
Xmax.Over Hang =	96.59	dB	98.87	dB
Xmech/Suspensiono =	20	nm	20	nm
	30	nm	35	nm



SPLX SERIES

SPLX subs have been designed specifically with the dB drag racer in mind. While they are able to handle tremendous amounts of power flawlessly on a continuous basis, they are specially designed to handle the gargantuan periodic power bursts required by dB drag racing competition without compromising the integrity of any part of the speaker.



FEATURES

- Cast Aluminum Basket
- Tough Pulp / Paper Cone
- Large-roll Foam Surround
- Dual Stacked Magnet Structure
- Dual 3", 2-ohm Voice Coils*
- Aluminum Voice Coil Former
- Extended Back-plate with Aero-Vent
- Stitched Tinsel Leads
- Spring Loaded Push Terminals
- Rubber Gasket
- Rubber Magnet Cover



[Quad 1ohm Voice Coil]

SPECIFICATION	SPLX-12	SPLX-15	SPLX-124	SPLX-154
DB BURST RATING (WATTS)*:	1500	2000	1500	2000
MAX POWER HANDLING:	750	1000	750	1000
MAGNET WEIGHT (Oz.) :	192	192	192	192
FREQ. RESPONSE (Hz) :	25 - 300	22 - 300	25 - 300	22 - 300
Fs (Hz) :	35.2	38.2	29.56	34.4
Qes:	0.342	0.465	0.294	0.388
Qms:	5.387	4.594	5.887	5.041
Qts:	0.322	0.422	0.280	0.360
Vas (Ft ³) :	1.423	2.305	14.23	23.12
MOUNTING HOLE SIZE (INCHES) :	11.25	14.25	11.25	14.25
WOOFER DEPTH (INCHES) :	7.25	8.125	7.25	8.125

* SPLX BURST RATING is a 2-second burst rating.

TARANTULA SERIES

T4 woofers require Full Throttle engineering for maximum SPL and power handling. These SPL machines are made to take the abuse of “Class D” amplification. You see “Class D” amplifiers will over heat a voice coil 2 to 3 times faster than a standard amplifier. We use custom mixed glues along with 18 gauge voice coil windings to handle that extra heat and abuse.

FEATURES

- Cast Aluminum Basket
- Dual 4-Layer, 1-ohm Voice Coils
- Cloth Laminated Paper Cone with MD6 coating
- Stone Gray Finish with Diamond Cut Edge
- Hi Arc, High Excursion Surround
- Chrome Plated Back-plate
- Low Carbon Top and Pole Piece
- Triple Stacked Magnet Structure
- Vented and Extended Pole Piece
- Black Progressive Roll CONEX Spider
- Woven Tinsel Leads
- Gold-Plated Binding Posts
- BAEISV Hybrid Voice Coil Former
- C- Lock Rubber Gasket
- Rubber Magnet Cover



SPECIFICATION	T4-10	T4-12	T4-15
RMS POWER (WATTS) :	800	900	1000
VOICE COIL DIAMETER(INCHES):	3.03.0	4.0	
MAGNET WEIGHT (Oz.) :	160	200	250
FREQ. RESPONSE (Hz) :	28-1.8k	25-1.7k	20-1k
Fs (Hz) :	40	36.5	34
Qes:	0.397	0.414	0.449
Qms:	1.975	3.584	3.722
Qts:	0.330	0.371	0.401
Vas (Ft³) :	0.35	1.03	2.08
Xmax (INCHES) :	0.63	0.63	0.551
SPL (dB) :	87	89	91
HOLE SIZE (INCHES) :	9.5	11.25	14.25
WOOFER DEPTH (INCHES) :	5.75	6.1	8.25
RECOMMENDED ENCLOSURE (Ft³) :	Ported 1.7	Ported 2.2	Ported 4.25
RECOMMENDED ENCLOSURE TYPE:	Vented	Vented	Vented
AEROPORT DIMENSIONS (INCHES) :	4 x 11.25 (1)	4 x 7.5 (1)	3 x 3 (2)

REFERENCE SERIES

Technological innovation is the best way to describe Reference woofers. The Reference woofers use low distortion, Fiber Glass cones integrated with TIL glass fiber voice coil formers for unparalleled control and dead center accuracy. If space is at a minimum and accuracy is at a maximum, you need the best Soundstream has to offer. Reference woofers are nothing short of sound Q genius.



FEATURES

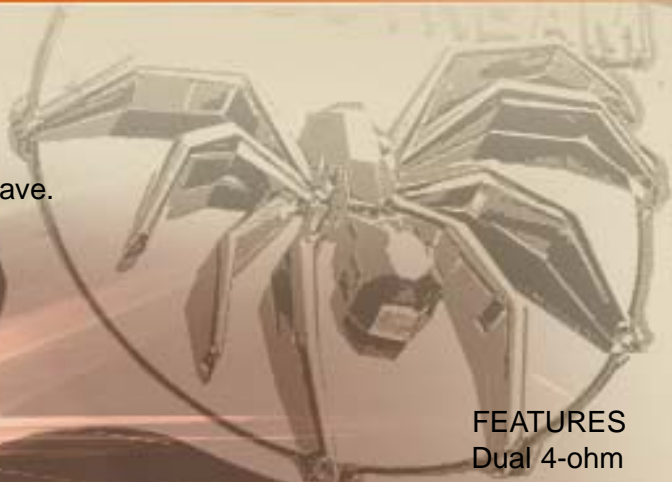
- Proprietary Cast Aluminum Basket
- UDV Cooling Technology
- Low Distortion Fiber Glass Cone
- Black Progressive Roll Conex Spider
- C-Lock Rubber Gasket
- XLS Santoprene Surround
- Dual 4-ohm Voice Coil
- 2.5" Aluminum Coil Former
- Woven Tinsel Leads
- Vented & Extended Pole Piece
- Low Carbon Top & Bottom Plate
- Rubber Magnet Cover



SPECIFICATION	RFW-10	RFW-12
RMS POWER (WATTS) :	500	600
VOICE COIL DIAMETER (INCHES) :	2.5	2.5
MAGNET WEIGHT (OZ.) :	100	120
FREQUENCY RESPONSE (HZ) :	23-1.4k	22-1.2k
Fs (Hz) :	28.5	29.0
Qes :	0.492	0.474
Qms :	7.969	8.032
Qts :	0.464	0.448
Vas (Ft ³) :	0.857/25.17 LITERS	1.81/48.49 LITERS
Xmax (INCHES) :	0.649	0.649
SPL (dB) :	85	87
HOLE SIZE (INCHES) :	9.5	11.25
WOOFER DEPTH (INCHES) :	5.4	5.9
RECOMMENDED ENCLOSURE (Ft ³) :	.5	.6/8
RECOMMENDED ENCLOSURE TYPE :	Sealed	Sealed
AEROPORT DIMENSIONS (INCHES) :	N/A	N/A

PICASSO SERIES

PCW Woofers are nothing short of engineering genius. Shock Wave technology bridges the gap between sound quality and SPL. Our engineers have increased the cone area while extending the X-max (vertical movement) to achieve maximum Shock Wave.



FEATURES

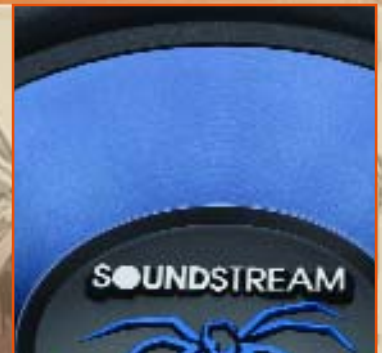
- Dual 4-ohm
- VoiceCoil Woven Tinsel Leads
- Vented & Extended Pole Piece
- Low Carbon Top & Bottom Plate
- Rubber Magnet Cover
- Stainless Steel Stamped Basket
- UDV Cooling Technology
- Low Resonance Woven Carbon Fiber Cone
- Black Progressive Roll Conex Spider
- C-Lock Rubber Gasket
- Hi-Arc High Excursion Surround



SPECIFICATION	PCW-10	PCW-12	PCW-15
RMS POWER (WATTS) :	300	350	400
VOICE COIL DIAMETER (INCHES) :	2	2	2.5
MAGNET WEIGHT (OZ.) :	50	50	60
FREQUENCY RESPONSE (HZ) :	25-1.2k	25-1.1k	23-1.0k
Fs (Hz) :	36	33	30
Qes :	0.628	0.733	0.722
Qms :	4.887	4.963	5.544
Qts :	0.557	0.638	0.639
Vas (Ft ³) :	0.8/22.85 LITERS	1.84/52.07 LITERS	3.59/101.6
Xmax (INCHES) :	0.413	0.413	0.315
SPL (dB) :	87	89	91
HOLE SIZE (INCHES) :	9.5	11.125	14.25
OUTER RING SIZE (INCHES) :	10	12	15
WOOFER DEPTH (INCHES) :	5.0	5	7
RECOMMENDED ENCLOSURE (Ft ³) :	0.5/0.75	1.25/3.0	2.0/3.5
RECOMMENDED ENCLOSURE TYPE :	Sealed	Sealed	Sealed
PORT DIMENSIONS (INCHES) :	None	None	None

XSTREAM SERIES

The Soundstream engineers have come up with the perfect solution to performance on a budget with the Xstream line of subwoofers. Boasting high power handling along with great looks that leave your eyes and ears screaming for more. We also use our revolutionary Zirconium coated cones for virtually no distortion resulting in tighter and deeper bass.



FEATURES

- Stainless Steel Stamped Basket
- UDV Cooling Technology
- Blue Zirconium Cone
- Black Progressive Roll Spider
- EVA Rubber Gasket
- Dual 4-ohm Voice Coil
- Vented & Extended Pole Piece
- Low Carbon Top & Bottom Plate
- Rubber Magnet Cover



SPECIFICATION	XS-10/2 (2ohm)	XS-12/2 (2ohm)
	XS-10	XS-12
RMS POWER (WATTS) :	250	300
VOICE COIL DIAMETER (INCHES) :	2.0	2.0
MAGNET WEIGHT (OZ.) :	40	40
FREQUENCY RESPONSE (HZ) :	25 - 2k	24 - 1.7k
Fs (Hz) :	31	25
Qes:	0.7263	0.4376
Qms:	6.5501	8.0682
Qts:	0.6538	0.4151
Vas (Ft³) :	1.502	3.721
Xmax (INCHES) :	0.2	0.2
SPL (dB) :	87	89
HOLE SIZE (INCHES) :	9.2	11.0
OUTER RING SIZE (INCHES) :	10	12.7
WOOFER DEPTH (INCHES) :	5.0	5.5
RECOMMENDED ENCLOSURE (Ft³) :	0.8	1.0
RECOMMENDED ENCLOSURE TYPE :	Sealed	Sealed
AEROPORT DIMENSIONS (INCHES) :	None	None

WOOFER GRILLS



Grill -10X



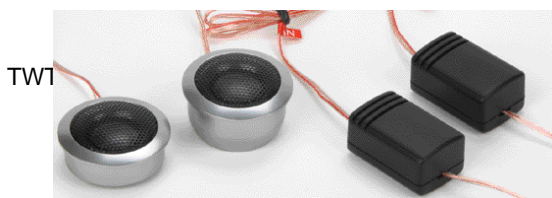
Grill -12X



Grill -15X

TWEETERS

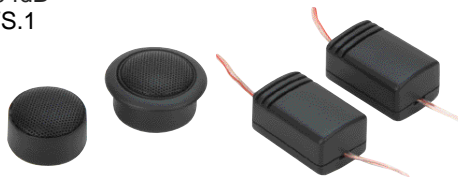
The simplest and most inexpensive upgrade to any sound system is to add tweeters. For the more discerned listener that wants smooth details, the TWS.3 silk dome tweeters are the perfect choice. If you love the crisp clear sound that sends a chill up your spine, the TWS.4 quartz tweeters will handle the demand.



TWT.2 FEATURES / SPECIFICATIONS

- 1" Horn Loaded Titanium Tweeter
- Flush mount aluminum housing
- Ferrofluid cooled
- Neodymium magnet
- 12dB/Octave passive crossover included
- Rated Input Power: 120W
- Impedance: 4ohm
- Freq. Resp. 3KHZ-22KHZ
- SPL 94dB

TWS.1



TWS.1 FEATURES / SPECIFICATIONS

- 1" Soft-Dome Tweeter
- Ferrofluid cooled
- Neodymium magnet
- Tri-Mounting - flush, surface or surface angle
- 12dB/Octave passive crossover included
- Rated Input Power: 110W
- Impedance: 4ohm
- Freq. Resp. 3KHZ-20KHZ
- SPL 93dB

TWS.3



TWS.3 FEATURES / SPECIFICATIONS

- 1" PEI dome tweeter
- Tri-Mounting - flush, surface or surface angle
- Adjustable eyeball design
- 12 dB In-Line Crossover Network
- Rated Input Power: 110W
- Impedance: 4ohm
- Freq. Resp. 2KHZ-21KHZ
- SPL 94dB

TWS.4



TWS.4 FEATURES / SPECIFICATIONS

- Tantalum 2-way mount tweeter
- Polished aluminum housing
- 12 dB In-Line Crossover Network
- Rated Input Power: 110W
- Impedance: 4ohm
- Freq. Resp. 5KHZ-25KHZ
- SPL 95dB

SPEAKER TECHNOLOGY

Although amplification may be the backbone of your audio system, you can't stop there. Proper sound dispersion through the use of speakers is imperative to the operation of a quality audio system. Poorly constructed speakers can be, and usually are, extremely detrimental to the quality of sound being emitted from the drivers.

Soundstream's acoustical engineers have been encouraged to think "outside

the box" in order to develop subwoofers designed specifically for different low frequency requirements. The results have been nothing short of spectacular: The new XXX line developed especially to meet the stringent demands of dB drag racers, SPLX Subs for continuous SPL, The REFERENCE Series for sound quality. Tarantula Subs for high power handling, or the Picasso and Xstream Subs for high efficiency at lower power levels.

Soundstream engineers have also spent a great deal of time researching and developing specific materials for our speakers to ensure that our full-range lines reproduce vocals as well as the definition in the mid-bass to high frequency ranges, with accuracy that flirts with sonic perfection.

REFERENCE SERIES COMPONENTS

Mid-Woofer
 Cast Aluminum Basket
 Treated and Pressed Paper Cone
 Butyl Rubber Surround
 Large Diameter Poly/Cotton Spider
 Chrome Motor Cover
 3" Voice Coil
 Aluminum Voice Coil Former
 Chrome Push Terminals
 4 Ohm System Impedance

Tweeter
 25mm Silk Dome
 Neodymium Magnet
 Ferrofluid Cooled

Crossover (Tweeter/Woofers)
 2 Way Passive Network
 18dB per Octave Crossover Output
 4 Different Attenuation Points
 Built In DC/Clip Protection
Selectable 6 or 12dB per Octave Crossover Output



SPECIFICATION	RF-60C
POWER HANDLING (Watts) :	180
MAGNET WEIGHT (Oz.) :	20
CROSSOVER FREQUENCIES: High-Pass (Hz)	3.5k
Low-Pass (Hz)	70
CROSSOVER SLOPE:	18dB
SENSITIVITY (dB) :	90
FREQUENCY RESPONSE (Hz) :	50 - 20k
VOICE COIL SIZE (INCHES) :	3
WOOFER MOUNTING DEPTH (INCHES) :	2.625

TARANTULA SERIES COMPONENTS

Mid-Woofers
 Cast Aluminum Basket
 Treated and Pressed Paper Cone
 Butyl Rubber Surround
 Large Diameter Poly/Cotton Spider
 Rubber Motor Cover
 1.25" Voice Coil
 Aluminum Voice Coil Former
 4 Ohm System Impedance

Tweeter
 25mm Silk Dome
 Neodymium Magnet
 Ferrofluid Cooled

Crossover (Tweeter/Woofers)
 2 Way Passive Network
 18dB per Octave Crossover Output
 2 Different Attenuation Points
 Built In DC/Clip Protection
Selectable 6 or 12dB per Octave Crossover Output

TRC.6

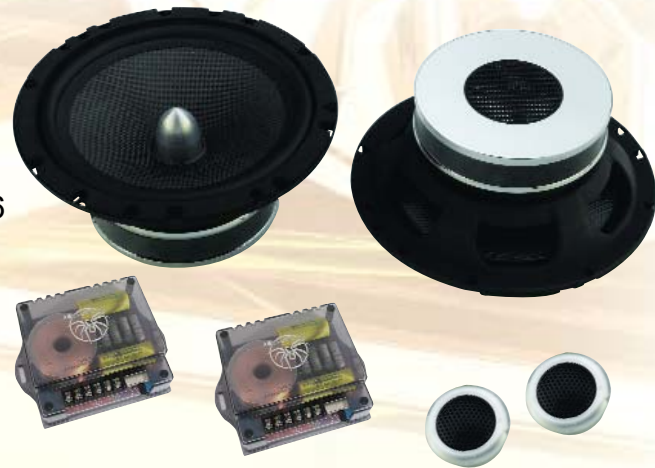


SPECIFICATION	TRC.6
POWER HANDLING (Watts) :	200
MAGNET WEIGHT (Oz.) :	15
CROSSOVER FREQUENCIES: High-Pass (Hz)	3.8k
Low-Pass (Hz)	60
CROSSOVER SLOPE:	18dB
SENSITIVITY (dB) :	91
FREQUENCY RESPONSE (Hz) :	40 - 20k
VOICE COIL SIZE (INCHES) :	1.25
WOOFER MOUNTING DEPTH (INCHES) :	2.6

FEATURES

- Stamped Steel Baskets
- Carbon Fiber / Kevlar Cones & Butyl Rubber Surrounds
- Black CONEX Spiders
- Nickel Plated Binding Posts
- Chrome Plated Top and Bottom Plates
- CNC Aluminum Phase Plug
- 4 Ohm System Impedance
- 1" Silk Dome Tweeters
- Neodymium Tweeter Magnets
- Aluminum Tweeter Housings
- Ferrofluid Cooling
- Impedance Compensating Passive Crossovers Included
- Tweeter Protection
- Grilles and Mounting Hardware Included

PCC.6



PCC.5



SPECIFICATION	PCC.5	PCC.6
POWER HANDLING (Watts) :	100	125
MAGNET WEIGHT (Oz.) :	12	13
CROSSOVER FREQUENCIES: High-Pass (Hz)		3.3k
Low-Pass (Hz)	3k	3k
CROSSOVER SLOPE:	12dB	12dB
SENSITIVITY (dB) :	91	91
FREQUENCY RESPONSE (Hz) :	75 - 20k	65 - 20k
VOICE COIL SIZE (INCHES) :	1.0	1.25
WOOFER MOUNTING DEPTH (INCHES) :	2.4	2.6

Xstream Zirconium coated cones TPU surrounds are only part of the picture with XSC.6 & XSC.5 matched component systems. The 1" soft dome tweeters can be flush, surface, or angle mounted for complete installation flexibility. The 12dB crossover network provides a seamless transition between the mid-woofers and the tweeters for crystal clear imaging.

FEATURES

- Die-Cast Baskets With Diamond Cut
- Hybrid Carbon Graphite Cone
- Butyl Rubber Surrounds
- Black CONEX Spiders
- Gold Plated Terminals
- Chrome Plated Top and Bottom Plates
- 3 Ohm System Impedance
- Neodymium Tweeter Magnets
- Ferrofluid Cooling
- Tweeter Protection
- Grilles and Mounting Hardware Included

XSC.5



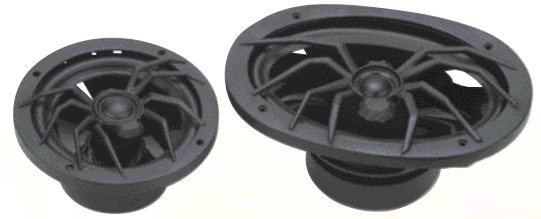
XSC.6



SPECIFICATION	XSC.5	XSC.6
POWER HANDLING (Watts) :	110	150
MAGNET WEIGHT (Oz.) :	12	13
CROSSOVER FREQUENCIES: High-Pass (Hz)		3.3k
Low-Pass (Hz)	3k	3k
CROSSOVER SLOPE:	12dB	12dB
SENSITIVITY (dB) :	90	91
FREQUENCY RESPONSE (Hz) :	85 - 20k	72 - 20k
VOICE COIL SIZE (INCHES) :	1.25	1.25

SPEAKERS TARANTULA SERIES

Black Zirconium coated cones, Ferrofluid cooling, 1-inch silk dome tweeters and progressively slanted surrounds all combine to make the Tarantula line of coaxial speakers the best bet for those who want to use no more room than a standard coaxial, but insist on the sound quality of a component system. The Tarantulas have separate connectors for the woofers and tweeters, and include a pair of 12dB per octave passive crossovers for precise frequency splitting.



SST6.9--- 6x9" 2-Way



SST5.7--- 5x7" 2-Way



SST6.5---6.5" 2-Way



SST5.2--- 5.25" 2-Way



SST4.6--- 4x6" 2-Way



SST4.0----- 4" 2-Way



SST3.5-- 3.5" 2-Way



2-Way Crossovers
* Included in all models

FEATURES

Bi-Amp Capability

Zolon Coated Low Resonance Basket
Black Zirconium Coated Cone

CONEX Spider
High Efficiency, Progressive Slant Butyl
Rubber Surround
Silk Dome Tweeter Surround

Ferro Fluid Cooled Tweeter
Swivel Pole Tweeter Mount
3-Ohm System Impedance

External Passive Crossover Included
Rubber Magnet Cover
Neodymium Tweeter Magnets

SPECIFICATION	SST3.5	SST4.0	SST4.6	SST5.2	SST6.5	SST5.7	SST6.9
RMS POWER HANDLING (WATTS):	75	85	100	100	120	130	150
MAGNET WEIGHT (OZ.):	8	8	10	10	12	12	22
FREQUENCY RESPONSE (Hz):	92 - 22k	88 - 22k	70 - 22k	72 - 22k	68 - 22k	60 - 22k	45 - 22k
VOICE COIL WOOFER/TWEETER:	1"/0.75	1"/0.75	1"/1"	1"/1"	1"/1"	1"/1"	1"/1"
SYSTEM SENSITIVITY:	86dB	88dB	89dB	89dB	90dB	90dB	90dB
CROSSOVER FREQUENCIES (Hz): High-Pass	9k	9k	4.5k	4.5k	4.5k	4.5k	4.5k
Low-Pass	9.8k	9.8k	5k	5k	5k	5k	5k
SYSTEM INPUT IMPEDANCE (Ohm):	3	3	3	3	3	3	3
CROSSOVER SLOPE (dB):	12	12	12	12	12	12	12
WOOFER MOUNTING DEPTH (IN):	1.81	2.01	2.28	2.36	2.68	2.6	3.46

SPEAKERS PICASSO SERIES

Reproducing sound can be a very difficult task in an automotive environment. That is why the Soundstream acoustical engineers have developed a new tweeter innovation called "Harmonic Induction Technology" or HIT in the Picasso full-range speaker line. We use this brand new tweeter technology to put the lost harmonics back into the upper range of your music all the way up to 50 kHz. The new HIT tweeter has a very warm and accurate sound reproducing the lost harmonics and frequency range due to prior material limitations with the key ingredient of the diaphragm called tantalum.



PCS.40N--4" 2-Way



PCS.65N-6.5" 3-Way



PCS.46N--4x6" 2-Way



PCS.52N--5.25" 2-Way



PCS.57N--5x7" 3-Way



PCS.69N--6x9" 3-Way

FEATURES

- Zolon Coated Low-Resonance Basket
- Black Zirconium Coated Cone
- TPU Surround
- ASV Voice Coils
- HIT (Harmonic Induction Technology)
- Swivel Pole Tweeter Mount
- Gold Terminal Connections
- Rubber Magnet Cover
- Impedance: 4 ohm

SPECIFICATION	PCS.40N	PCS.46N	PCS.52N	PCS.65N	PCS.57N	PCS.69N
RMS POWER HANDLING (WATTS) :	60	75	75	85	100	120
MAGNET WEOGHT (OZ.) :	8	10	10	12	12	22
FREQUENCY RESPONSE (Hz) :	95 - 50k	75-50k	75 - 50k	70 - 50k	65 - 50k	50 - 50k
VOICE COIL:	1 "	1 "	1 "	1 "	1 "	1 "
SENSITIVITY:	90dB	91dB	92dB	92dB	92dB	93dB
MOUNTING DEPTH (INCHES) :	1.89	2.2	2.17	2.56	2.36	3.35

SPEAKERS XSTREAM SERIES

Xstream Fullrange speakers were developed using new technologies along with some of the latest, high-tech materials to give you great looks, & sound at affordable prices. We use TPU surrounds along with Zirconium coated cones to give you the clean crisp sounds that you are looking for. The namesake says it all.



XTS6.9----- 6x9" 3-Way



XTS5.7--- 5X7" 3-Way



XTS6.5--- 6.5" 3-Way



XTS5.2-- 5.25" 3-Way



XTS4.6--- 4X6" 2-Way



XTS4.0--- 4" 2-Way



XTS3.5---3.5" 2-Way

FEATURES

Zolon Coated Low Resonance Baskets
Black Zirconium Plated Injection Molded
Cones TPU Rubber Surrounds

High Efficiency Polymide Dome Tweeters

Swivel Pole Piece Coils Mount

Chrome Front Back Plates

Rubber Magnet Cover

Ferrite Magnets

Grilles and Mounting Hardware Included (except
EGS3.5)



XTS6.8-----6x8" 3-Way

SPECIFICATION

	XTS3.5	XTS4.0	XTS4.6	XTS5.2	XTS6.5	XTS5.7	XTS6.8	XTS6.9
RMS POWER HANDLING (WATTS) :	80	100	125	125	150	180	200	200
MAGNET WEOGHT (OZ.) :	12	12	12	12	18	20	22	30
FREQUENCY RESPONSE (Hz) :	80-20K	70-20K	75-20K	65-20K	60-20K	55-20K	50-20K	40-20K
VOICE COIL:	0.75	0.75	0.75	1	1	1	1.25	1.5
ENSITIVITY:	90dB	90dB	90dB	91dB	91dB	91dB	91dB	92dB
MOUNTING DEPTH (INCHES) :	1.75	2	2	2	2.5	2.5	2.75	3.25

HUMAN REIGN

Beauty and the Beast. An extreme departure from the norm in both appearance and performance, innovations in design and technology combine to produce an amplifier that will not only please the most eclectic art lover, but will produce enough audio power to satisfy the most stringent SPL freak.

Pure Class A circuitry
 Fully regulated MOSFET power supply
 RUBI™ (Rapid-Use Branched Impulse) Proprietary power supply topology
 STACT™ (STabilized Apex Current Topology) Reduces power supply stress by 50%
 Auto High Current™ Matches the amplifier for virtually every load application
 Chassisink™ Semiconductors are situated between the circuit board and heatsink for optimal thermal transfer
 Ultra-Low ESR Capacitance Bank ensures rapid power delivery for dynamic peaks
 Triple Darlington output circuitry
 Hawkins Bass Control™ Proprietary bass equalization topology
 Harmonic Bass Alignment™ Produces tighter and more accurate bass
 IDI™ (Intelligent Distress Indicator) Gives visual indication of amplifier protection status
 Bi-Linear built-in selectable 2-way crossovers for amplifier and line output
 4-Way protection topology - Thermal, DC Offset, Speaker Short and Reverse Polarity
 Selectable Balanced line inputs for highest level of noise rejection



	FEATURE	HUMAN REIGN 2	HUMAN REIGN 4
OUTPUT POWER:	RMS/Chan @ 4 Ohms (Watts)	450 x 2	125 x 4
	RMS/Chan @ 2 Ohms (Watts)	800 x 2	250 x 4
	RMS Bridged @ 4 Ohms (Watts)		1600 x 1 500 x 2
T.H.D.:		< 0.02%	< 0.02%
SIGNAL TO NOISE RATIO:		> 90dB	>90dB
DAMPING FACTOR:		> 500	> 500
FREQUENCY RESPONSE:		10Hz - 40KHz	10 Hz - 40KHz
INPUT SENSITIVITY (VOLTS):		0.15 - 5.0	0.15 - 5.0
CONTINUOUSLY VARIABLE ELECTRONIC CROSSOVERS:		Low-pass@24dB/octave(all channels)	40 -
	160Hz	40 - 160Hz	
		High-pass@12dB/octave(chans1&2)	50 - 500Hz 500 -
5KHz		High-pass@12dB/octave(chans3&4)	- 50 - 500Hz
HAWKINS BASS CONTROL (SUBSONIC POSITION):	Variable High Pass (no boost)	13 - 30Hz	13 - 30Hz
HAWKINS BASS CONTROL CONTROL (ON POSITION):	Variable Boost Frequency	30 - 70Hz	30 - 70Hz
	Variable Bass Boost	0 - 9dB	0 - 9dB

SIGNAL PROCESSOR

MTUBE-8

Professional Tube Pre-Amp

Professional dual-valve/tube pre-amp
High co-channel separation
Harmonic feed-back loop control circuitry
Double sided copper-clad PCB
Frequency resp: 15 Hz-55 KHz
Output power: 15 volts
Cool-glow, dual color tube window
Switchable dual input
Front/rear/sub output

Variable phase control (0~180)
Separate Sub volume control
Master volume control
3 position selectable ground audio reference
S/N ratio: >90dB
Variable sub-crossover 40-150Hz



MPQ-6XO

Parametric EQ w/ crossover and sub volume

Isolated PWM power supply
Master volume control with up to 12 volts RMS of output
Front/rear fader control
Four band parametric equalizer with 18dB boost/Cut.
30V bi-polar switching power supply
Subwoofer output and level control
Subwoofer frequencies adjustable 50Hz-250Hz
AUX/CD input selector
20dB headroom eliminates signal overload

4 band parametric range: Sub 20-70Hz/
Low 150-400Hz/Mid 1.5-4KHz/Hi 4-20KHz
Subwoofer Crossover: 50-250hz
Boost/Cut: 18dB
S/N Ratio: >120dB Ref 1V Input
Frequency Response: 10Hz-25KHz + / -1dB
Stereo Separation: 90dB/1KHz
THD: <0.005%
Input Impedance: >50k Ohm
Output Impedance: <5K Ohm



MPQ-5XO

Parametric EQ w/ crossover and sub volume

Master volume control with up to 10 volts RMS of output
Front/rear fader control
Four band parametric equalizer with 18dB boost/Cut.
30V bi-polar switching power supply
Subwoofer output and level control
Subwoofer frequencies adjustable 50Hz-250Hz
AUX/CD input selector
20dB headroom eliminates signal overload
4 band parametric range: Sub 20-70Hz/
Low 150-400Hz/Mid 1.5-4KHz/Hi 4-20KHz

Subwoofer Crossover: 50-250hz
Boost/Cut: 18dB
S/N Ratio: >120dB Ref 1V Input
Frequency Response: 10Hz-25KHz, + / -1dB
Stereo Separation: 90dB/1KHz
THD: <0.005%
Input Impedance: >50k Ohm
Output Impedance: <5K Ohm



PQ-7

Parametric EQ w/ crossover

Inputs/Outputs: front/rear/subwoofer
 Variable front EQ frequencies: (30~350Hz),
 (100~1K Hz), (330~3.3K Hz), (1.5K~15K Hz)
 Variable rear EQ frequencies: (200~2K Hz),
 (1.5K~15K Hz)
 Variable subwoofer EQ frequency: 20~180 Hz
 Q-Factor control for each band: 0.5~20
 Gain control for each band: +/-10dB
 Subwoofer Channel: 24dB crossover slope

Phase Control: 0~1800
 Variable Sub Sonic Filter: 10~80Hz w/Q-factor
 (0.5~1.2)
 Max Input Level: 10V
 Max Output Level: 10V
 Frequency Resp: 10Hz-50KHz
 THD: 0.01%
 S/N ratio: >110dB
 Input Imp: 10K ohm
 Output Imp: 150 ohm



BX-10

Digital Bass Reconstruction processor

Max. Bass Control
 Dash Mount Remote Control
 Bass Restoration Lighted Display
 Parametric Bass Control
 PFM Subsonic Filter
 Balanced Inputs
 Bass Output Control
 PWM High Head Room Power Supply
 Output Level: 13.5 volt
 Frequency Response: 10Hz~100KHz
 THD: 0.003%
 S/N Ratio: 130dB
 Balanced Input Noise Rejection: 60 dB



BX-12

Digital Bass Reconstruction processor

Max. Bass Control
 Dash Mount Remote Control
 PFM Subsonic Filter & Bass Level Control
 Chrome Logo Plate
 Bass Restoration Lighted Display
 Parametric Bass Control
 PFM Subsonic Filter
 Balanced Inputs
 Bass Output Control
 PWM High Head Room Power Supply
 Output Level: 13.5 volt
 Frequency Response: 10Hz~100KHz
 THD: 0.002%
 S/N Ratio: 132dB
 Balanced Input Noise Rejection: 60 dB



POWER CAPACITORS

Soundstream's newest technology that will breathe life into your power hungry sound system is called EC2 hybrid power capacitors.

We have combined Electrolytic and Carbon based capacitors together to give your system all of the power that it will need. The electrolytic capacitors provide sustained power for stronger and tighter bass while the carbon-based capacitors supply instant current for a quicker and more pronounced sound. Get every thing you can out of your sound system with EC2 power capacitors.



SC-1

- 1.0 Farad Storage Capacity
- 24VDC Surge Rated
- PCB with Blue LED Display
- 16 Status LED's
- Metal Mounting Bracket
- Extruded Aluminum Housing
- Chrome Die-cast end Caps



SC-2A

- 2.0 Farad Storage Capacity
- New Amperage Meter
- 24VDC Surge Rated
- PCB with Blue LED Display
- 16 Status LED's
- Metal Mounting Bracket
- Extruded Aluminum Housing
- Chrome Die-cast end Caps



SC-5CA

- 5.0 Farad Digital Hybrid Super Capacitor
- New Amperage Meter
- 25VDC Surge Rated
- PCB with Blue LED Display
- Charging Status Indicator
- 16 Status LED's
- Metal Mounting Bracket
- Extruded Aluminum Housing
- Chrome Die-cast end Caps
- Chrome Plated Connecting Ring Terminals
- Wooden Display Box



SC-8CA

- 8 Farad Digital Hybrid Super Capacitor
- New Amperage Meter
- 24VDC Surge Rated
- PCB with Blue LED Display
- Charging Status Indicator
- 24 Status LED's
- Metal Mounting Bracket
- Extruded Aluminum Housing
- Chrome Die-cast end Caps
- Chrome Plated Rectangular Low Profile Case
- Plexiglas Viewing Window
- Ring Terminals
- Wooden Display Box



SC-20CA

- 20 Farad Digital Hybrid Super Capacitor
- New Amperage Meter
- 24VDC Surge Rated
- PCB with Blue LED Display
- Charging Status Indicator
- 24 Status LED's
- Metal Mounting Bracket
- Extruded Aluminum Housing
- Chrome Die-cast end Caps
- Chrome Plated Rectangular Low Profile Case
- Plexiglas Viewing Window
- Ring Terminals
- Wooden Display Box



SC-40CA

- 40 Farad Digital Hybrid Super Capacitor
- New Amperage Meter
- 24VDC Surge Rated
- PCB with Blue LED Display
- Charging Status Indicator
- 36 Status LED's
- Metal Mounting Bracket
- Extruded Aluminum Housing
- Chrome Die-cast end Caps
- Chrome Plated Rectangular Low Profile Case
- Plexiglas Viewing Window
- Ring Terminals
- Wooden Display Box

Voltage is the fuel for the heart of your system, the amplifiers. Soundstream engineers have designed a single power and ground distribution hub that keeps the power flowing. Turn a plain install into a show stopping installation with breath taking sound using the Power Plant and Power Plant 2.

PowerPlant

You cannot power a whole city up with out an electrical distribution station to send it to the far reaches of the city. The same goes for your sound systems power needs. The Power Plant is a single source distribution center that will route all of the electrical requirements to your Audio/Video system in a neat orderly fashion.



PowerPlant 2

Power/Ground Inputs	1
Power/Ground Input Wire Size	4 Awg
Power/Ground Outputs	2
Power/Ground Output Wire Size	8 Awg
Max Current Input/Output	200 amps
Max Fuse Size (x 4)	100 amps

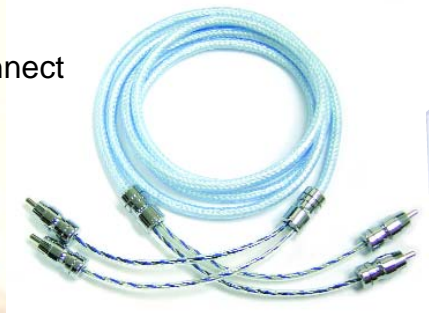
PowerPlant

Power/Ground Inputs	1
Power/Ground Input Wire Size	1/0 Awg
Power/Ground Outputs	4
Power/Ground Output Wire Size	4 Awg
Max Current Input/Output	400 amps
Max Fuse Size (x 4)	100 amps
Max Turn-on Relay Current	20 amps

RCA CABLES

Clear Jacket Sleeves
Double Shielding Twisted Signal Interconnect

RCA1.5	_____	1.5ft cable
RCA3.0	_____	3ft cable
RCA6.0	_____	6ft cable
RCA12	_____	12ft cable
RCA17	_____	17ft cable
RCA20	_____	20ft cable
RCA-1M2F	_____	1 Male to 2 Female cable
RCA-1F2M	_____	2 Male to 1 Female cable



POWER AMP INSTALL KITS



SK-4

- 4 ga. / 20 Ft. Clear Red Power Cable
- 4 ga. / 4 Ft. Clear Black Ground Cable
- 16 ga. / 35 Ft. Clear Speaker Cable
- 18 Ft. Blue Turn On Cable
- 17 Ft. Shielded Clear Blue RCA Cable
- Mini ANL Fuse Holder With 80A Fuse
- Complete Accessories
- 6 Ft. Split Loom

SK-8

- 8 ga. / 20 Ft. Clear Red Power Cable
- 8 ga. / 4 Ft. Clear Black Ground Cable
- 16 ga. / 35 Ft. Clear Speaker Cable
- 18 Ft. Blue Turn On Cable
- 17 Ft. Shielded Clear Blue RCA Cable
- Mini ANL Fuse Holder With 40A Fuse
- Complete Accessories
- 6 Ft. Split Loom

Is your sound system is working up to its full potential? If you are not supplying enough current and voltage along with a clean signal input, you are not getting what you paid for. Increase the sound quality and SPL of your system by using Soundstream wiring kits and accessories that are made specifically to increase your sound systems performance.



SK4/8 4/8 guage amp kit for 2 amp

systems

RCA cables

Power cables

Ground cables

Speaker cables

Remote cables

Fuse holder

ANL fuses

Distribution block

Ring terminals

Complete accessories



SK0/4CAP 0/4 guage amp kit for 2 amp sys-
tems

1.2 farad capacitor

Power Plant

Fuse block w/digital amp/DVC meter

Battery clamp terminals

RCA cables

Power cables

Ground cables

Speaker cables

Remote cables

Fuse holder

ANL fuses

Distribution block

Ring terminals

Complete accessories

SK4/8CAP 4/8 guage amp kit for 2 amp systems

1.2 farad capacitor

Power Plant

Fuse block w/digital amp/DVC meter

Battery clamp terminals

RCA cables

Power cables

Ground cables

Speaker cables

Remote cables

Fuse holder

ANL fuses

Distribution block

Ring terminals

Complete accessories

MARINE SERIES

Hi ho maties, grab your wetsuits, hoist your anchors and get ready to experience SoundStream's marine audio gear. This is not converted car audio gear but a full line of products specifically developed and tested to deliver peak performance in the unstable, bumpy boating environment.. From salt-fog tested amplifiers and speakers, to specially treated cone materials and marine industry approved paints.



Common Features

- Input sensitivity: 100mV - 2V or 2V - 8V
- Variable bass boost: 0 to +12dB
- Trimode capable
- Variable 18dB high & low pass crossover
- Low level inputs
- Low level outputs
- High speed digital circuitry
- Fully regulated PWM power supply
- Four way protection circuit
- Dash mount bass knob remote
- Marine coated circuit board

MA340.2

power 4ohm	85X2
power 2ohm	170X2
power 4ohm bridged	340X1
X-over Frequency	20Hz - 25kHz
Dimension	8.75x2x8.75"

MA640.4

power 4ohm	85X4
power 2ohm	170X4
power 4ohm bridged	340X2
X-over Frequency	20Hz - 25kHz
Dimension	8.75x2x11.5"

MA700.2

power 4ohm	175X2
power 2ohm	350X2
power 4ohm bridged	700X1
X-over Frequency	20Hz - 25kHz
Dimension	8.75x2x12.75"

MARINE SERIES

We go the extra mile to make sure your bass hits, your tweeters are crisp & clear and your mids are accurate and distinct.

So whether you're a "laker" or a seafarer; no not THAT Laker, you know what I mean; make an impression they'd never forget, make your choice SoundStream, the folks who first established an Sound Quality REFERENCE standard.

Features

- Plastic Injection Molded UV Frame
- Injection Molded Titan Cone
- TPU Surrounds
- HIT (Harmonic Induction Technology)
- Tweeters
- ASV Voice Coils
- Element Coated Tinsel Leads
- Plastic UV Magnet Covers
- UV Tarantula Grills included



SPECIFICATION	MS.653	MS.693
RMS POWER HANDLING (WATTS) :	85	120
MAGNET WEOGHT (OZ.) :	12	22
FREQUENCY RESPONSE (Hz) :	70 - 20k	50 - 20k
VOICE COIL:	1 "	1 "
SENSITIVITY:	92dB	93dB
MOUNTING DEPTH (INCHES) :	2.56	3.35

MARINE COMPONENTS ENCLOSURE



MPOD-8 Dual 8" System

- Butyl Rubber Surrounds
- Dual 4 Ohm System Impedance
- 1.5" Silk Dome Tweeters
- Neodymium Tweeter Magnets
- 200 Watts
- SPL 92dB
- Freq. Res. 60Hz - 22KHz

Ceiling Monitor/DVD Combos



VCM-17D

- 17 " Wide Combo Flip Down Monitor with DVD & TV Tuner
- Last position memory (Flash memory)
- Playback System (DVD, DVD-R, VCD, SVCD, CD-DA, CD-R/RW, MP3)
- Speed Control for Fast Forward/Reverse(2, 4, 8,16)
- Zoom Screen (1.5, 2, 3, Off)
- NTSC/ PAL Auto Selection
- On Screen Display with Remote Control
- 1 Video/ Audio(R/ L) Inputs
- 1 Video/ Audio(R/ L) Outputs
- Rear Panel (Auxiliary or Game Inputs)
- 2 Screen Modes
- Aspect Ratio 16:9
- Built-in IR Transmitter for Wireless Headphones
- Built-in FM Transmitter
- Dome Lights
- Resolution: 1280 x 768 (WXGA)
- Brightness: 450NIT

DVD Section
DVD/SVCD/VCD/CD/CDR/CDRW/MP-3/DVCD

- Vacuum Loader DVD
- DVD (NTSC & PAL) Selectable
- Dolby Pro-logic/DTS Compatible
- Rear Panel (Auxiliary or Game Inputs)
- Electronic Digital Anti-shock

VCM-15D

- 15.1 " Combo Flip Down Monitor with DVD & TV Tuner
- Last Position Memory (Flash Memory)
- Slim and Compact Design
- Easy Installation
- Playback System (DVD, DVD-R, VCD, SVCD, CD-DA, CD-R/RW, MP3)
- Speed Control for Fast Forward/Reverse(2, 4, 8,16)
- Zoom Screen (1.5, 2, 3, Off)
- NTSC/ PAL Auto Selection
- On Screen Display with Remote Control
- 2 Video/ Audio(R/ L) Inputs
- 1 Video/ Audio(R/ L) Outputs
- Rear Panel (Auxiliary or Game Inputs)
- Aspect Ratio 4:3
- Built-in IR Transmitter for Wireless Headphones
- Built-in FM Transmitter
- Dome Lights
- Resolution: 1280 x 800 (XGA)
- Brightness: 400NIT

DVD Section DVD/SVCD/VCD/CD/CDR/CDRW/MP-3/DVCD

- Vacuum Loader DVD
- DVD (NTSC & PAL) Selectable
- Dolby Pro-logic/DTS Compatible
- Electronic Digital Anti-shock



TR-15

Extra Trim rim for VCM-15D
Allows cutting for Sculptured Ceilings

Ceiling Monitor/DVD Combos

VCMM-122D Motorized Flip Down

12 " Wide Combo Flip Down Monitor with DVD & TV Tuner

- Adjustable screen angle with remote control
- Last position angle memory
- Last position memory (Flash memory)
- Easy Installation
- Playback System (DVD, DVD-R, VCD, SVCD, CD-DA, CD-R/RW, MP3)
- Speed Control for Fast Forward/Reverse(2, 4, 8,16)
- Zoom Screen (1.5, 2, 3, Off)
- NTSC/ PAL Auto Selection
- On Screen Display with Remote Control
- 2 Video/ Audio(R/ L) Inputs
- 1 Video/ Audio(R/ L) Outputs
- Rear Panel (Auxiliary or Game Inputs)
- Aspect Ratio 16:9
- Built-in IR Transmitter for Wireless Headphones
- Built-in FM Transmitter
- Dome Lights
- Resolution: 1024 x 600 (WXGA)
- Brightness: 350NIT



TR-120GM

GM Trim rim for VCMM-122D



VCM-12D

10.2 " Wide THIN Combo Flip Down Monitor with DVD & TV Tuner

- Last Position Memory (Flash Memory)
- Slim and Compact Design
- Easy Installation
- Playback System (DVD, DVD-R, VCD, SVCD, CD-DA, CD-R/RW, MP3)
- Speed Control for Fast Forward/Reverse(2, 4, 8,16)
- Zoom Screen (1.5, 2, 3, Off)
- NTSC/ PAL Auto Selection
- On Screen Display with Remote Control
- Swivel Screen
- 1 Video/ Audio(R/ L) Inputs
- 1 Video/ Audio(R/ L) Outputs
- Rear Panel (Auxiliary or Game Inputs)



TR-120M

Extra Trim rim for VCMM-122D
Allows cutting for Sculptured Ceilings



- Aspect Ratio 16:9
- 4 Screen Modes
- Built-in IR Transmitter for Wireless Headphones
- Built-in FM Transmitter
- Dome Lights & Rear
- Resolution: 1024 x 600 (XGA)
- Vacuum Loader DVD
- DVD (NTSC & PAL) Selectable
- Dolby Pro-logic/DTS Compatible
- Electronic Digital Anti-shock
- Brightness: 400NIT

VCM-13D

10.4" Combo Flip Down Monitor with DVD Player

- Last Position Memory (Flash Memor)
- Slim and Compact Design
- Easy Installation
- Playback System (DVD, DVD-R, VCD, SVCD, CD-DA, CD-R/RW, MP3)
- Speed Control for Fast Forward/Reverse(2, 4, 8,16)
- NTSC/ PAL Auto Selection
- On Screen Display with Remote Control
- Swivel Screen
- 1 Video/ Audio(R/ L) Inputs
- 1 Video/ Audio(R/ L) Outputs
- Rear Panel (Auxiliary or Game Inputs)



TR-102

Extra Trim rim for VCM-12D
Allows cutting for Sculptured Ceilings



- Aspect Ratio 4:3
- Built-in IR Transmitter for Wireless Headphones
- Dome Lights
- Resolution: 1024 x 768 (XGA)
- Brightness : 250NIT
- Vacuum Loader DVD
- DVD (NTSC & PAL) Selectable
- Dolby Pro-logic/DTS Compatible
- Electronic Digital Anti-shock



TR-103

Extra Trim rim for VCM-13D
Allows cutting for Sculptured Ceilings

Ceiling Monitor/DVD Combos



CMTV-2

TV Tuner Module Fits Models:
VCM-13D, VCM-95D

VCM-95D

9.5" Wide Combo Flip Down Monitor with DVD

- Last Position Memory (Flash Memory)
 - Easy Installation
 - Playback System (DVD, DVD-R, VCD, SVCD, CD-DA, CD-R/RW, MP3)
 - Speed Control for Fast Forward/Reverse(2, 4, 8,16)
 - Zoom Screen (1.5, 2, 3, Off)
 - NTSC/ PAL Auto Selection
 - On Screen Display with Remote Control
 - Swivel Screen
 - 2 Video/ Audio(R/ L) Inputs
 - 1 Video/ Audio(R/ L) Outputs
 - 4 Screen modes
 - Aspect Ratio 16:9
 - Rear Panel (Auxiliary or Game Inputs)
 - Built-in IR Transmitter for Wireless Headphones
 - Built-in FM Transmitter
 - Dome Lights
 - Resolution: 800 x 480 (WXGA)
 - Brightness : 400NIT
- DVD Section DVD/SVCD/VCD/CD/CDR/CDRW/MP-3/DVCD
- Vacuum Loader DVD
 - DVD (NTSC & PAL) Selectable
 - Dolby Pro-logic/DTS Compatible
 - Rear Panel (Auxiliary or Game Inputs)
 - Electronic Digital Anti-shock



VCM-81D

- 8" Combo Flip down Monitor with DVD
- Last Position Memory (Flash Memory)
- Slim and Compact Design
- Easy Installation
- Playback System (DVD, DVD-R, VCD, SVCD, CD-DA, CD-R/RW, MP3)
- Speed Control for Fast Forward/Reverse(2, 4, 8,16)
- NTSC/ PAL Auto Selection
- On Screen Display with Remote Control
- Swivel Screen
- 1 Video/ Audio(R/ L) Inputs
- 1 Video/ Audio(R/ L) Outputs

- Aspect Ratio 4:3
- Built-in IR Transmitter for Wireless Headphones
- Built-in FM Transmitter
- Dome Lights
- Resolution: 640 x 480 (XGA)
- Panel Brightness: 350 NIT

DVD Section DVD/SVCD/VCD/CD/CDR/CDRW/MP-3/DVCD

- Vacuum Loader DVD
- DVD (NTSC & PAL) Selectable
- Dolby Pro-logic/DTS Compatible
- Rear Panel (Auxiliary or Game Inputs)
- Electronic Digital Anti-shock



VCM-151

15.2" Universal Ceiling Mount Monitor

- Amorphous Active Matrix Digital TFT/LCD
- Remote Control
- OSD On Screen Display
- Dual A/V Inputs
- Built-in IR Transmitter
- Built-in FM Transmitter
- NTSC / PAL Auto Switchable
- Resolution: 1024 x 768
- Brightness: 400 NIT
- Dimensions: 1.6"(W) x 14.7"(D) x 15.2"(H)



1502GM

GM SUV Vehicle specific overhead for VCM-151

Ceiling Monitors



VCM-108

10.4" Swivel universal Ceiling Mount Monitor

- Amorphous Active Matrix TFT/LCD
- Remote control
- OSD On Screen Display
- NTSC/PAL switchable
- 2 Audio/Video Inputs
- Built-in IR transmitter
- Built-In FM transmitter
- Built-In Dome lights
- Panel Brightness 250 NIT
- Resolution: 1600x320



VCM-109

10.4" Swivel universal Ceiling Mount Monitor

- Amorphous Active Matrix TFT/LCD
- Remote control
- OSD On Screen Display
- NTSC/PAL switchable
- 2 Audio/Video Inputs
- Built-In IR transmitter
- Built-In FM transmitter
- Built-In Dome lights
- Panel Brightness 250 NIT
- Resolution: 1600x320



VCM-96

9.5" Universal Ceiling Mount Monitor

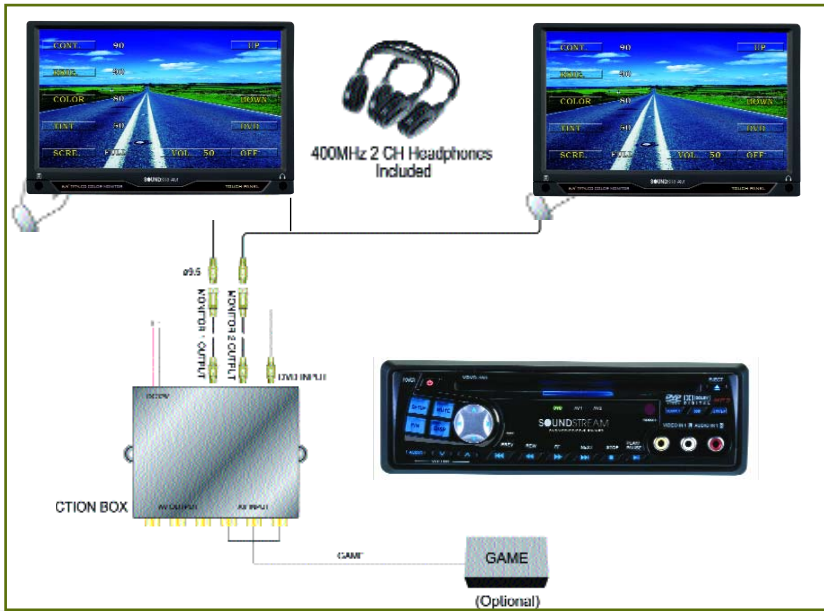
- Amorphous Active Matrix TFT/LCD
- Remote control
- OSD On Screen Display
- NTSC/PAL switchable
- 4 screen modes
- Aspect ratio: 16:9
- Bass/Treble/Balance/loudness controls
- 2 Audio/Video Inputs
- Built-in IR transmitter
- Built-In FM transmitter
- Built-In Dome lights
- Panel Brightness 400 NIT
- Resolution: 800x480 (WXGA)



VCM-80

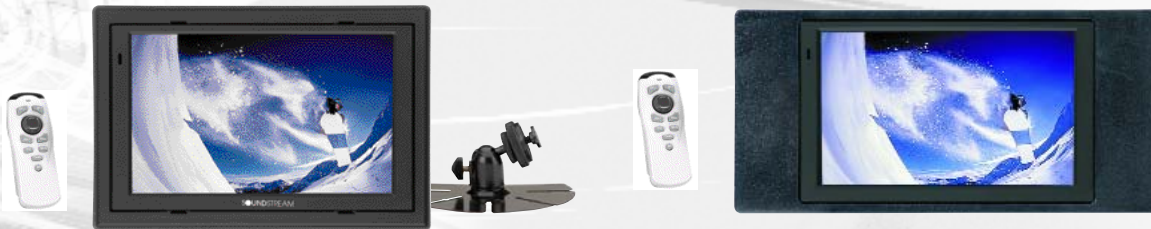
8" Swivel universal Ceiling Mount Monitor

- Amorphous Active Matrix TFT/LCD
- Remote control
- OSD On Screen Display
- NTSC/PAL switchable
- 2 Audio/Video Input
- Built-in IR transmitter
- Built-In Dome lights
- Panel Brightness 350 NIT
- Resolution: 640x480



VHR-65X2D

- 2 Monitors with 2CH IR, & DVD
- 6.5 TFT/LCD Wide Touch Screen Monitors
- Din to Locking U.S.B. Quick Install System
- 4 Screen Modes (Full, Wide, Cinema, Normal)
- On Screen Display (OSD)
- (NTSC & PAL) Selectable
- Front Headphone Jack
- Touch Screen Technology
- 2 A/V Inputs
- 3 A/V Outputs
- Aspect Ratio 16:9
- Resolution: 1200 x 234
- Panel Brightness: 450 NIT
- Including 2 900 MHZ dual Ch. Wireless Headphones
- Panel Brightness: 450NIT
- Including VDVD-160 DVD Player



VHR-76

- 7" Wide (16:9) Headrest Module
- Amorphous Active Matrix TFT/LCD
- Including pre-curved headrest Adapter
- Adjustable Installation Depth
- Headrest Shroud
- 1 Video Input
- OSD On Screen Display
- Remote Control
- Panel Brightness: 400NIT
- 4 Screen Mode (Full, Wide, Cinema, Zoom)
- NTSC/PAL switchable
- Resolution: 1440 x 234
- Dimensions: 7" x 5" x .9"
- Direct Power ON/OFF

VSV-78

- 7" Wide (16:9) Sun visor Monitor
- Amorphous Active Matrix TFT/LCD
- 1 Video Input
- OSD On Screen Display
- Remote Control
- Panel Brightness: 400NIT
- 4 Screen Mode (Full, Wide, Cinema, Zoom)
- NTSC/PAL switchable
- Resolution: 1440 x 234
- Dimensions: 9" x 5" x .9"
- Direct Power ON/OFF



CI-17

- 17" Wide Screen Monitor
- Amorphous Active Matrix TFT/LCD
- Remote Control
- OSD On Screen Display
- NTSC/PAL Switchable
- Front Controls
- High Brightness: 450 NIT
- Resolution: 1280 x 768
- Dimensions: 16" x 11" x 1.8"

In Dash Monitor/DVD & AVN (Audio/video/Navigation)



VIR-4000

VIR-4100N Same with Navigation

4.2" TFT/LCD Motorized drop front panel with multiple angle options with last angle memory

- Touch Screen
- DVD, CD, MP-3, CD-R, CD-RW
- Last position memory
- Hi-temperature car spec loader
- Repeat, intro, random
- On screen display title, time, chapter, subtitle and angle
- Anti-shock mechanism with ESP digital memory
- PLL synthesized AM/FM super heterodyne tuner
- 30 pre-sets (12-AM/18-FM)
- Auto store pre-set scan
- LO/DX and stereo mono selector switch
- Electronic Volume, Bass, Treble, Balance, Fader
- 50 x 4 channel high power
- Digital clock
- USB mini input
- Win CE 4.2 Operation for navigation model
- CF card storage (4G byte) for navigation model
- 2 A/V inputs
- RCA line outputs
- Sub woofer outputs
- Rear view function
- Dolby digital outputs
- PAL/NTSC color system
- Telephone Mute Function
- Full function remote control
- Brightness: 400 NIT
- ISO/DIN



VIR-7000

VIR-7100N Same with Navigation

6.5" TFT/LCD Motorized drop front panel with multiple angle options with last angle memory

- Touch Screen
- DVD, CD, MP-3, CD-R, CD-RW
- Last position memory
- Hi-temperature car spec loader
- Repeat, intro, random
- On screen display title, time, chapter, subtitle and angle
- Anti-shock mechanism with ESP digital memory
- PLL synthesized AM/FM super heterodyne tuner
- 30 pre-sets (12-AM/18-FM)
- Auto store pre-set scan
- LO/DX and stereo mono selector switch
- Electronic Volume, Bass, Treble, Balance, Fader
- 50 x 4 channel high power
- Digital clock
- USB mini input
- Win CE 4.2 Operation for navigation model
- CF card storage (4G byte) for navigation model
- 2 A/V inputs
- RCA line outputs
- Sub woofer outputs
- Rear view function
- Dolby digital outputs
- PAL/NTSC color system
- Telephone Mute Function
- Full function remote control
- Brightness: 350 NIT
- ISO/Double DIN

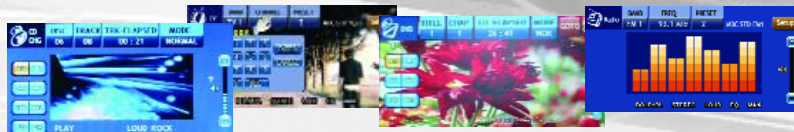
In-Dash DVD Players



VIR-7880TS In-dash Fully Motorized 7" Wide TFT/LCD Monitor w/ DVD Player

- DVD, DVDR, DVD, MP3, CD, CDR, CDRW Player
- 4 Screen Modes (Full, Cinema, Wide, Zoom)
- AM/FM Radio with Presets
- Built-in TV Tuner With Diversity Circuitry
- Front Panel Display
- 6 Channel High Power (50Wx 4 & 25W x 2)
- 6 Channel Pre-amp Output
- Jog Shuttle Volume Control
- 3 A/V Inputs / 1 Camera Input / 1 A/V Output
- Motorized Screen Telescopes Out & Up/Down
- 5.1 dolby digital & DTS digital Outputs
- Adjustable Viewing Angle For Left/Right
- Bass/Treb/Fader/Bal Control
- OSD On Screen Display
- Remote Control
- Brightness: 400NIT
- Resolution: 1440 x 234
- Dolby Pro-logic/DTS Compatible Optical or Coaxial
- Digital Anti-shock
- NTSC/PAL
- ISO/DIN

Touch Screen



VIR-7850 In-dash Fully Motorized 7" Wide TFT/LCD Monitor w/ DVD Player

- DVD, DVDR, DVD, MP3, CD, CDR, CDRW Player
- 4 Screen Modes (Full, Cinema, Wide, Zoom)
- AM/FM Radio with Presets
- Built-in TV Tuner With Diversity Circuitry
- Front Panel Display
- 6 Channel High Power (50Wx 4 & 25W x 2)
- 6 Channel Pre-amp Output
- Jog Shuttle Volume Control
- 2 A/V Inputs / 1 Camera Input / 1 A/V Output
- Motorized Screen Telescopes Out & Up/Down
- Adjustable Viewing Angle For Left/Right
- Bass/Treb/Fader/Bal Control
- OSD On Screen Display
- Remote Control
- Brightness: 400NIT
- Resolution: 1440 x 234
- Dolby Pro-logic/DTS Compatible Optical or Coaxial
- Digital Anti-shock
- NTSC/PAL
- ISO/DIN
- Auto Dimmer



VIR-8000 3.6" wide screen TFT/LCD Motorized drop front panel with multiple angle options with last angle memory

- DVD, DVDR, CD, MP-3, CD-R, CD-RW
- Last position memory
- Hi-temperature car spec loader
- Repeat, intro, random
- On screen display title, time, chapter, subtitle and angle
- Anti-shock mechanism with ESP digital memory
- Detachable face
- PLL synthesized AM/FM super heterodyne tuner
- 30 pre-sets (12-AM/18-FM)
- Auto store pre-set scan
- LO/DX and stereo mono selector switch
- Electronic Volume, Bass, Treble, Balance, Fader
- Preset EQ
- 50 x 4 channel high power
- Digital clock
- USB mini input
- Auxiliary input
- 4 RCA line outputs
- Sub woofer outputs
- Rear View Input

In-Dash DVD Players



VDVD-310R In-Dash DVD, DVDR., MP3, CD, CDR,CDRW Player

- Drop door full detachable face
- Built-in AM/FM PLL Radio
- 30 presets , Store/Scan/Seek
- Slot Loader for Multiple Angle Mounting
- Dolby Pro-Logic/DTS Compatible
- 4 CH Hi power (50wx4)
- 4 CH RCA Outputs
- Dancing Spectrum Analyzer
- Remote Control
- Aux input
- Amp Trigger
- OSD On Screen Display
- Digital Anti-Shock
- NTSC/PAL Switchable
- ISO/DIN
- Preset EQ
- Loud/Mute
- Extra Large Multi-color LCD Display
- Clock
- Elec. Vol/Bal/Bass/Tre/Fad
- Last Position Memory



VDVD-155 In-Dash DVD, DVD-R, MP3, CD, CDR, CDRW Player

- Slot Loading DVD for Multiple Angle Mounting
- In-Dash, Floor & Under Dash Mounting Brackets
- Front Panel A/V RCA Inputs
- Flash Memory Recall
- Dolby Pro-logic/DTS Compatible
- Remote Control
- Accessory Remote Eye
- OSD On Screen Display
- Digital Anti-shock
- NTSC/PAL Selectable
- DIN Size Trim Ring For Dash Mounting
- Cigarette Lighter Plug
- Dimensions: 6.4" x 6.2" x 2"



VDVD-160 In-Dash DVD, DVD-R, CD, MP-3, CDR, CDRW, Player

VDVD-161T Same W/Built-In TV Tuner

- Slot Loading DVD for Multiple Angle Mounting
- Last Position Memory
- Dolby Pro-logic/DTS Compatible
- Remote Control
- Accessory Remote Eye
- Dual Screen Outputs
- Front And Rear Inputs
- OSD On Screen Display
- Digital Anti-shock
- NTSC/PAL Selectable
- Floor & Under Dash Mounting Brackets
- ISO/DIN



VDVD-200 Half Din In-Dash DVD, DVD-R, MP3, CD, CDR, CDRW Player

- Slot Loading DVD for Multiple Angle Mounting
- In-Dash, Floor & Under Dash Mounting Brackets
- Last Position Memory
- Dolby Pro-logic/DTS Compatible
- Remote Control
- Accessory Remote Eye
- OSD On Screen Display
- Digital Anti-shock
- NTSC/PAL Selectable
- Optical & Coaxial Outputs

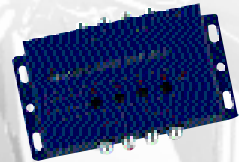
Mobile Video Accessories



VAV-4 Wireless Audio/Video Controller
4A/V inputs & 4A/V outputs
All Outputs Independently Selectable Via Remote
18' Accessory Remote Eye & Remote Control
Four 12volt output Triggers on Molex connectors



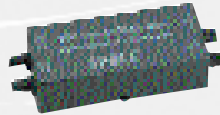
VTUN-6 69 Channel TV Tuner
2 Booster Antenna Inputs On Mini-jacks
Remote Control Operation Via 18' Remote Eye
Inputs For Accessory Back-up Camera
Dual A/V Inputs
1 A/V Outputs



VAB-2 Twin Audio Booster
Dual Source Inputs With Line Balancing to 2 Volts
Independent Output Trimmer Pots
For Each Source
Shielded Metal Housing For Noise Rejection



VVB-2 One In & Five Output Video Signal Booster
Five Individual Output Trimmer Gain Controls
Shielded Metal Housing For Noise Rejection
Video Output Gain control



VFM-5 PLL FM Modulator
PLL Phase Lock Loop Tuner Outputs
8 Frequency Settings On Selectable DIP Switches
Shielded Metal Housing For Noise Rejection



VFT-6 FM Transmitter
Wireless 3 CH FM Transmitter
Easy Installation
Shielded Housing For Noise Rejection

PostScript Picture



VF-40D PLL FM Transmitter

- Wireless 40ch FM Transmitter
- 40 Frequency Settings On Up/Down Buttons
- LCD Display For Viewing Channels
- Easy Installation
- Shielded Housing For Noise Rejection

LP-1C License Plate Color Camera

- 1/3" CCD 1 LUX Low Light Color Camera
- Multiple Camera Angle
- Din Connector & RCA Outputs
- Reversed Image

Mobile Video Accessories



VCCD-1 Bullet Style Color Camera

1/3" CCD 1 LUX Low Light Color Camera
Din Connector & RCA Outputs
Operating Temperature: -14F to 131F
Reversed Image



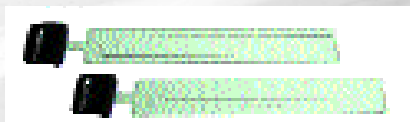
VCCD-2 Bullet Style Color Camera

Flush and Angle Mount
1/3" CCD 1 LUX Low Light Color
Camera
Din Connector & RCA Outputs
Reversed Image



VCCD-3 Bullet Style Color Camera

Built-In 12 LEDs For Excellent Night Vision
1/3" CCD 1 LUX Low Light Color Camera
Din Connector & RCA Outputs
Reversed Image



VANT-5 4 Channel Diversity Twin Film Antennas

Antenna leads, (4 Mini-plugs)
Cable Length 12 Feet
Receives Signals On Ch. 2-13 & 14-69
Output Impedance: 75 Ohms



VANT-6B VCR or DVD Film Antenna

Mini-plug/RG-59 Cable Style Connector
Single Channel Input 20dB Gain
Cable Length 12 Feet
Receives Signals On Ch. 2-13 & 14-69
Output Impedance: 75 Ohms

VIR-10 Wireless Infrared Headphone

Adjustable Headphone Straps
Single Channel UHF IR TX Wave Head Phone Receiver
Receives Broadcasts Up To 180°
ON/OFF Switch Saves Battery Life
Variable Volume Control
ALC Auto Level Control
Built-in Mute Function



VIR-20 Wireless Infrared Headphones

Adjustable Headphone Straps
Single Channel UHF IR TX Wave Headphone Receiver
Including IR Transmitter
Receives Broadcasts Up To 180°
ON/OFF Switch Saves Battery Life
Variable Volume Control
ALC Auto Level Control
Built-in Mute Function



VIR-22 2 CH Wireless Infrared Headphones

Adjustable Headphone Straps
2 Channel UHF IR TX Wave Headphone Receiver
Including IR Transmitter
Receives Broadcasts Up To 180°
ON/OFF Switch Saves Battery Life
Variable Volume Control
ALC Auto Level Control
Built-in Mute Function





[Polo]



[Dress shirt]



[T- shirt]

MODEL DESCRIPTION:

T SHIRTS

Soundstream T-Shirts
available in M, L, XL, XXL

POLO Shirt

Soundstream Polo Shirts
available in S, M, L, XL, XXL

DRESS SHIRTS

Soundstream dress shirts
available in S, M, L, XL

CAPS

Soundstream caps, 1 size fits all

SS BANNERS

Soundstream color banners

POSTER BANNERS

Soundstream color poster banners

PLAQUE

Soundstream dealer plagues, black piano
finish wood and chrome Tarantula logo

SM STICKER

Soundstream small sticker

WINDOW STICKER

Soundstream large window sticker

COUNTER TOP

Soundstream counter top sign

SLING BAG

Soundstream sling bag available in
2 tone red and 2 tone blue colors

BIG SS TENT

Soundstream 10' x 20' tent for
out door shows & other occasions

LANYARD

Soundstream Lanyard



[Cap]



[SS Banner]



[Poster Banner]



[Plaque]

SOUNDSTREAM

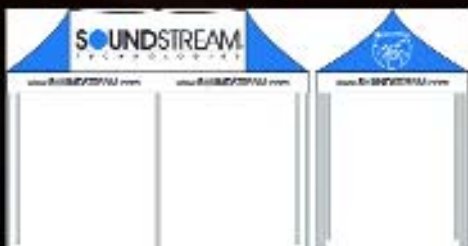
[Sticker]



[Sling bag]



[Lan Yard]



SOUNDSTREAM



www.soundstream.com

© 2006 SOUNDSTREAM TECHNOLOGIES MONTEBELLO, CALIFORNIA, U.S.A.

ALL RIGHTS RESERVED.

SPECIFICATIONS AND DESIGNS ARE SUBJECT TO CHANGE WITHOUT NOTICE.

PRINTED IN U.S.A.