

ELATE™ 2-WAY SPECIFICATIONS

<p>5" SYSTEM SPECIFICATIONS</p> <p>Nominal Impedance 4 Ohm Power Handling 160W Max. Transient Power Handling 1000W Sensitivity (2.83V/1M) 88dB Frequency response 35-25000Hz</p> <p>5" WOOFER SPECIFICATIONS</p> <p>Nominal Impedance 4 Ohm Power Handling 160W Max. Transient Power Handling 1000W Sensitivity (2.83V/1M) 88dB Frequency response 35-3600Hz FS 55Hz Voice Coil Diameter 75mm (3") Voice Coil Height 14.5mm (0.57") Voice Coil type/ Former Aluminum Voice Coil Wire Hexatech Aluminum DC Resistance 3.7 Ohm Voice Coil Inductance @1Khz 0.39MH Magnet system Hybrid Rear Vented HE- Magnetic Gap Height 6mm (0.25") B- Flux density 0.8T BL Product/BXL 6.15 Max Linear Excursion/Xmax 8.5mm (± 4.25) Suspension Compliance CMS 676 Mechanical Q factor QES 0.42 Total Q Factor Q/T 0.35 QMS 1.99 Mechanical Resistance RMS 1.03KgS¹ Moving Mass MMS 11.8gr Equivalent Cas Air Load VAS 8 Liters Effective piston area SD 90cm² Cone Type One Piece Formed Cone Material DPC(Damped Polymer Composite) Unit Diameter 135mm (5.25") Mounting Depth 60mm (2.36") Mounting Cutout 136mm (5.36")Dia. Net Weight 1.050Kg</p>	<p>6" SYSTEM SPECIFICATIONS</p> <p>Nominal Impedance 4 Ohm Power Handling 200W Max. Transient Power Handling 1000W Sensitivity (2.83V/1M) 89dB Frequency response 25-25000Hz</p> <p>6" WOOFER SPECIFICATIONS</p> <p>Nominal Impedance 4 Ohm Power Handling 200W Max. Transient Power Handling 1000W Sensitivity (2.83V/1M) 89dB Frequency response 25-4000Hz FS 50Hz Voice Coil Diameter 75mm (3") Voice Coil Height 14.5mm (0.57") Voice Coil type/ Former Aluminum Voice Coil Wire Hexatech Aluminum DC Resistance 3.7 Ohm Voice Coil Inductance @1Khz 0.38MH Magnet system Hybrid Rear Vented HE- Magnetic Gap Height 6mm (0.25") B- Flux density 0.8T BL Product/BXL 6.35 Max Linear Excursion/Xmax 8.5mm (± 4.25) Suspension Compliance CMS 721 Mechanical Q factor QES 0.39 Total Q Factor Q/T 0.33 QMS 2.06 Mechanical Resistance RMS 1.033KgS¹ Moving Mass MMS 13.56gr Equivalent Cas Air Load VAS 14.35 Liters Effective piston area SD 119cm² Cone Type One Piece Formed Cone Material DPC(Damped Polymer Composite) Unit Diameter 165mm (6.5") Mounting Depth 61mm (2.37") Mounting Cutout 141mm (5.55")Dia. Net Weight 1.180Kg</p>	<p>9" SYSTEM SPECIFICATIONS</p> <p>Nominal Impedance 4 Ohm Power Handling 200W Max. Transient Power Handling 1000W Sensitivity (2.83V/1M) 90dB Frequency response 20-25000Hz</p> <p>9" WOOFER SPECIFICATIONS</p> <p>Nominal Impedance 4 Ohm Power Handling 200W Max. Transient Power Handling 1000W Sensitivity (2.83V/1M) 91dB Frequency response 20-3300Hz FS 40Hz Voice Coil Diameter 75mm (3") Voice Coil Height 14.5mm (0.57") Voice Coil type/ Former Aluminum Voice Coil Wire Hexatech Aluminum DC Resistance 3.7 Ohm Voice Coil Inductance @1Khz 0.72MH Magnet system Hybrid Rear Vented HE- Magnetic Gap Height 6mm (0.25") B- Flux density 0.9T BL Product/BXL 7.04 Max Linear Excursion/Xmax 8.5mm (± 4.25) Suspension Compliance CMS 706 Mechanical Q factor QES 0.42 Total Q Factor Q/T 0.35 QMS 2.09 Mechanical Resistance RMS 1.28KgS¹ Moving Mass MMS 21.63gr Equivalent Cas Air Load VAS 47.50 Liters Effective piston area SD 219cm² Cone Type One Piece Formed Cone Material DPC(Damped Polymer Composite) Unit Diameter 222mm (8.75") Mounting Depth 71mm (2.8") Mounting Cutout 192mm (7.56")Dia. Net Weight 1.420Kg</p>
<p>TWEETER MT-23 SPECIFICATIONS</p> <p>Nominal Impedance 6 Ohm Power Handling 130W Max. Transient Power Handling 350W Sensitivity (2.83V/1M) 91dB Frequency response 1400-25000Hz FS 950Hz Voice Coil Diameter 28mm (1.125") Voice Coil Former Aluminum Voice Coil Wire Hexatech Aluminum DC Resistance 5.2 Ohm Magnet system Double Magnet Neodymium Dome Type Acuflex™ Hand Coated Soft Dome Dome Material Silk Unit Diameter 45mm (1.8")Dia. Mounting Depth 20mm (0.8") Mounting Cutout 50mm (2")</p>	<p>ACCUSET MX-22E CROSSOVER</p> <p>Nominal Impedance 4 Ohm Power Handling 280W Crossover Point 1800Hz Crossover Controls Frequency Slope: Cut 6/12 dB. Tweeter Level: ± 4 dB (2 dB steps)</p> <p>Wiring Options Standard, Bi-amp, Bi-wire. Housing Material Die-cast Aluminium Terminal Type Large Screws gold plated Net Weight 1.050 Kg</p>	

ELATE™ 2-WAY 5/6/9

Component Systems Installation Guide



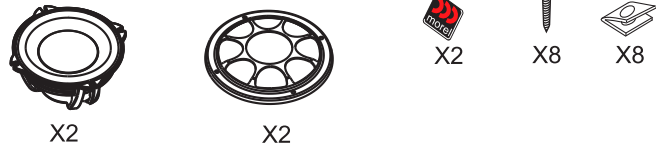
www.morelhifi.com



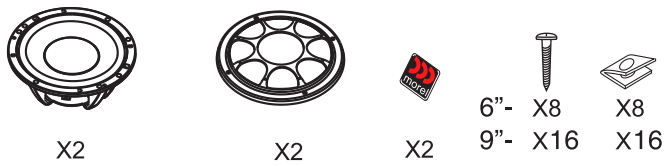
www.morelhifi.com

PACKAGE CONTENT

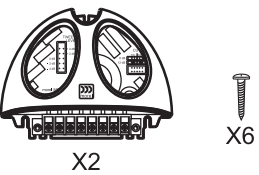
5" ELATE SW WOOFER



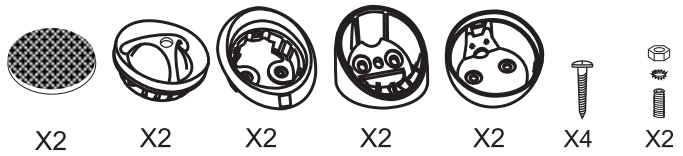
6" & 9" ELATE SW WOOFER



CROSSOVER ACCUSET MX-22E

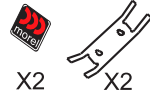


TWEETER MT-23



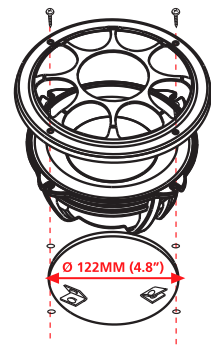
GRILL OPTIONS

SURFACE OPTIONS

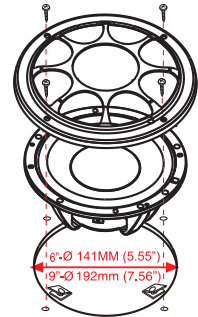


WOOFER & CROSSOVER MOUNTING

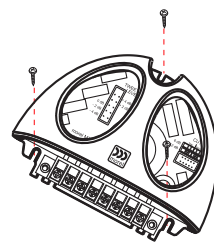
5" UNIT MOUNTING



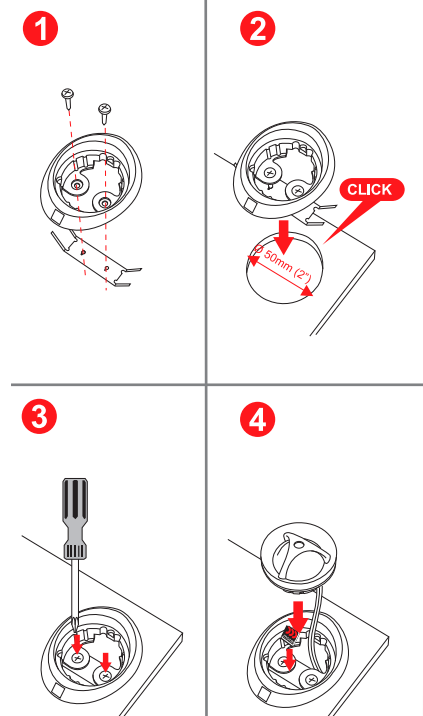
6" & 9" UNIT MOUNTING



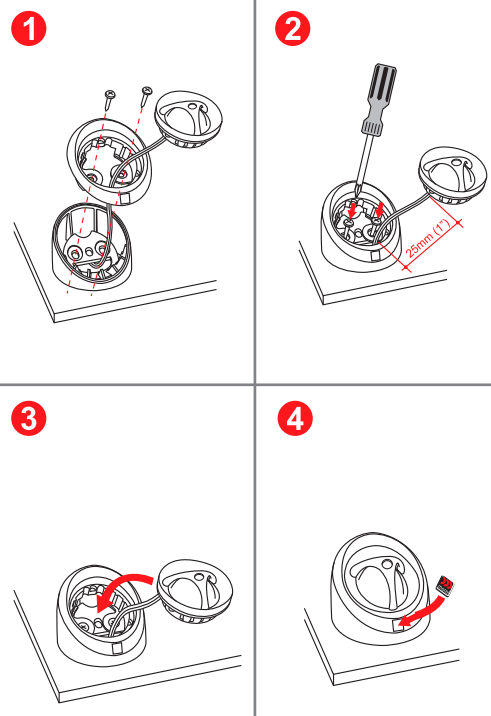
CROSSOVER MOUNTING



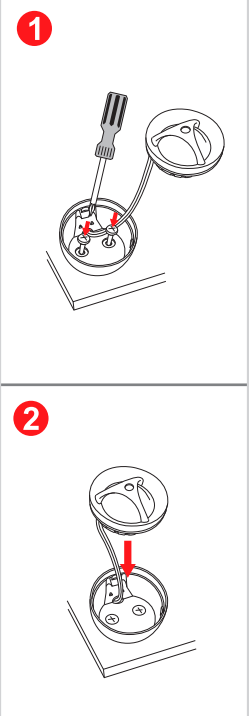
FLUSH MOUNTING



SURFACE MOUNTING

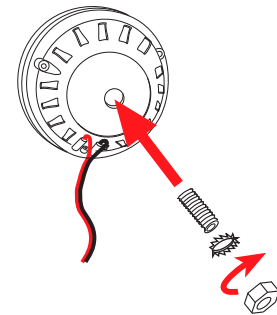


OPTION 3



OPTION 4

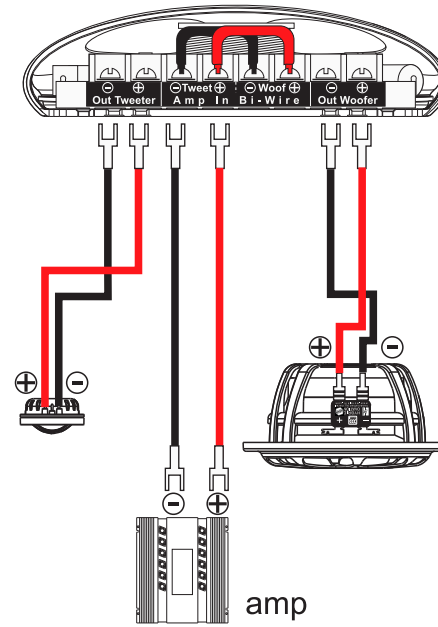
USE M3 SCREW SIZE



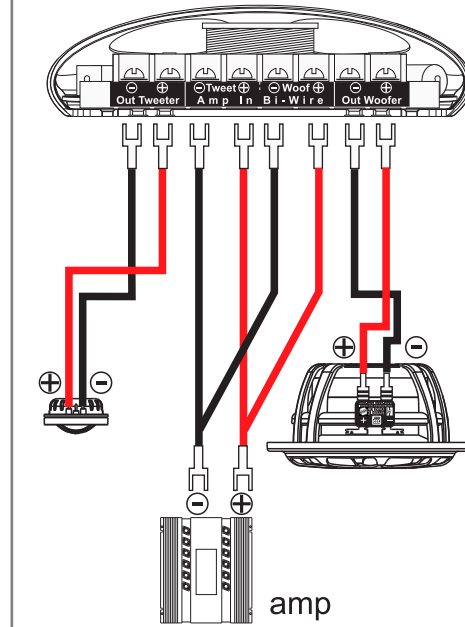
Caution : Tighten screw gently to avoid damaging the magnet assembly

WIRING OPTIONS FOR ACCUSET MX-22E CROSSOVER

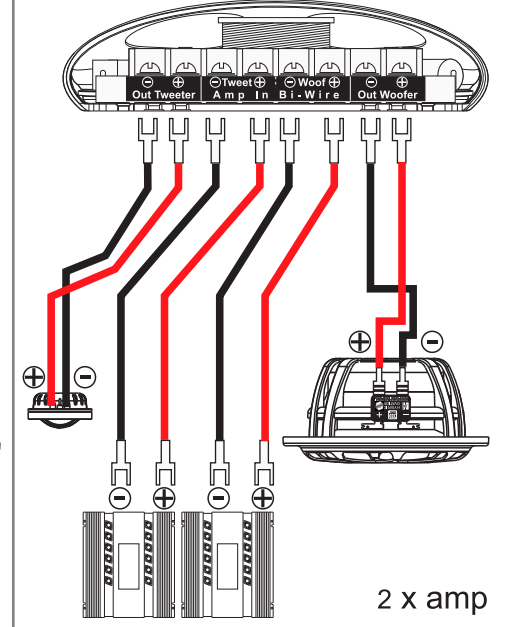
1 Standard wire connection\ With bridged Jumpers



2 Bi Wire connection\ No bridged jumpers



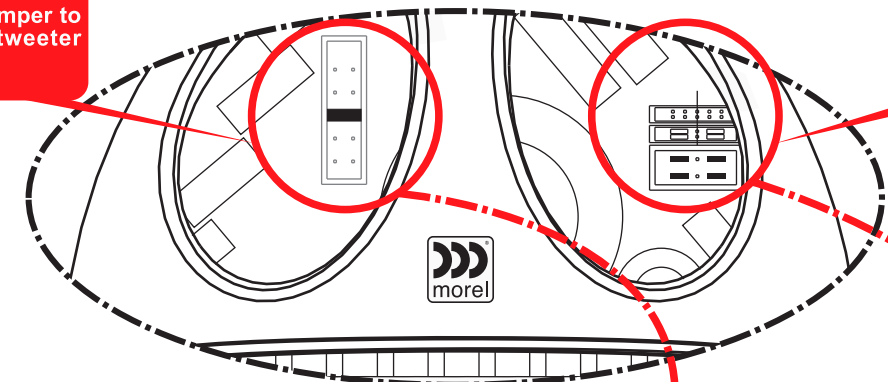
3 Bi Amp connection\ No bridged jumpers



ACCUSET MX-22 CROSSOVER ALIGNMENT SYSTEMS

Use the black jumper to determine the tweeter +/- dB level

Use the black jumper to determine the tweeter and woofer crossover slope cut



ACCUSET ALIGNMENT SYSTEM

