



NEUPANEL MINI

User Manual

XILICA

Important Safety Information

1. READ THESE INSTRUCTIONS

All the safety and operating instructions should be read before the product is operated.

2. KEEP THESE INSTRUCTIONS

The safety and operating instructions should be retained for future reference.

3. HEED ALL WARNINGS

All warnings on the product and in the operating instructions should be adhered to.

4. FOLLOW ALL INSTRUCTIONS

All operating and use of instructions should be followed.

5. DO NOT USE THIS APPARATUS IN WATER.

Do not use the product near water. For example, near a bathtub, wash bowl, kitchen sink, or laundry tub, in a wet basement, or near a swimming pool, and the like.

6. CLEAN ONLY WITH DRY CLOTH.

Unplug the unit from the wall outlet before cleaning.

7. DO NOT BLOCK ANY VENTILATION OPENINGS

Slots and openings in the cabinet back or bottom are provided for ventilation, to ensure reliable operation of the limit and to protect it from overheating. These openings must not be blocked or covered. The openings should never be blocked by placing the product on a bed, sofa, rug, or similar surface. This product should never be placed near or over a radiator or heat source. This product should not be placed in a built-in installation such as a bookcase or rack unless proper ventilation is provided or the manufacturer's instructions have been adhered to.

8. DO NOT INSTALL NEAR ANY HEAT SOURCES

This product should be situated away from heat sources such as radiators, stoves or other products (including amplifiers) that produces heat.

9. DO NOT DEFEAT THE SAFETY PURPOSE OF THE POLARIZED OR GROUNDING-TYPE PLUG

A polarized plug has two blades with one wider than the other. A grounding-type plug has two blades and a third grounding prong. The wide blade or the third prongs are provided for your safety. If the provided plug does not fit into your outlet, consult an electrician for replacement of the obsolete outlet.

10. PROTECT THE POWER CORD FROM BEING WALKED ON OR PINCHED PARTICULARLY AT PLUGS, CONVENIENCE RECEPTACLES, AND THE POINT WHERE THEY EXIT FROM THE APPARATUS.

11. ONLY USE ATTACHMENTS/ACCESSORIES SPECIFIED BY THE MANUFACTURER.

12. USE ONLY WITH CART, STAND, TRIPOD, BRACKET, OR TABLE SPECIFIED BY THE MANUFACTURER, OR SOLD WITH THE APPARATUS. WHEN A CART IS USED, USE WITH CAUTION WHEN MOVING THE CART/APPARATUS TO AVOID INJURY FROM TIP-OVER.

Do not place this unit on an unstable cart, stand, tripod, bracket, or table. The unit may fall, causing serious injury to someone, and serious damage to the appliance. A unit and cart combination should be moved with care. Quick stops, excessive force, and uneven surfaces may cause the product and cart combination to overturn.

13. UNPLUG THIS APPARATUS DURING LIGHTNING STORMS OR WHEN UNUSED FOR LONG PERIODS OF TIME.

For added protection for this unit during a lightning storm, or when it is left unattended and unused for long periods of time, unplug it from the wall outlet and disconnect the antenna or cable system. This will prevent damage to the unit due to lightning and power surges.

14. REFER ALL SERVICING TO QUALIFIED PERSONNEL. SERVICING IS REQUIRED WHEN THE APPARATUS HAS BEEN DAMAGED IN ANY WAY. SUCH AS, WHEN THE POWER SUPPLY CORD OR PLUG IS DAMAGED, LIQUID HAS BEEN SPILLED, OR OBJECTS HAVE FALLEN INTO THE APPARATUS, THE APPARATUS HAS BEEN EXPOSED TO RAIN OR MOISTURE, DOES NOT OPERATE NORMALLY, OR HAS BEEN DROPPED.

15. WARNING: TO REDUCE THE RISK OF FIRE OR ELECTRIC SHOCK, DO NOT EXPOSE THIS APPARATUS TO RAIN OR MOISTURE.

16. APPARATUS SHALL NOT BE EXPOSED TO DRIPPING OR SPLASHING AND NO OBJECTS FILLED WITH LIQUIDS, SUCH AS VASES, SHALL BE PLACED ON THE APPARATUS.

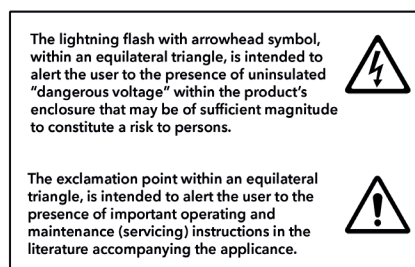
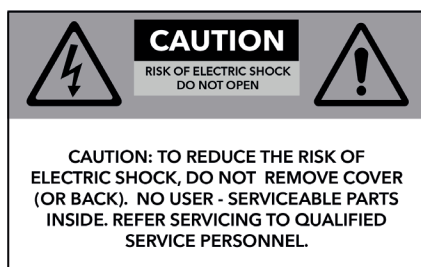


Table of Contents

What's in the box	4
NeuPanel Mini series models	5
Hardware descriptions and functions	6-7
Hardware device connection	
a. To network	8
b. To mains power	9
Install Xilica Designer software	
a. Windows installation	10
b. Mac installation	11
Xilica Designer's Network View	
a. Device network status	12
b. Connection troubleshoot	13-14
c. Manual assignment of IP addresses	15-17
d. Firmware upgrade	18
Xilica Designer's Project view	
a. Create a new project	21
b. Map device(s)/Online mode	27



What's in the Box

- NeuPanel series wall control device
- Mounting screws (color specific to wall control color)
- Surface mount back box (NeuPanel mini devices can be flush or surface mounted)
- External power supply

What you need to Provide

- Mac or PC computer with a processor 1GHz or higher
- Windows 7 or higher
- Mac OSX
- 500 MB of free space
- 1 GB graphics card
- 4 GB of RAM
- External power supply is included but it is recommended to use a PoE router/switch
- Ethernet cable (Cat5/6)

Getting Help

Additional Help Files and video tutorials are available at our website: www.xilica.com

For further technical support, please email: support@xilica.com and we'll connect you with a solutions engineer. Alternatively, you can call our worldwide offices for immediate assistance:

North America & Rest of World: +1 905-770-0055

Europe: +31 29940-1100

China & Hong Kong SAR: +852 2604-9382

The Xilica NeuPanel Mini wall controls come in five different configurations. Please note that the NeuPanel series is not compatible with Solaro series DSP.



NeuPanel Mini K1

Control any single value change, including: gains, threshold, frequency, etc.



NeuPanel Mini K4

Control any four-value changes, including: gains, threshold, frequency, etc.



NeuPanel Mini S4

Control any four buttons in the system design including Preset selection.



NeuPanel Mini S8

Control any eight buttons in the system design including Preset selection.



NeuPanel Mini S4K1

Control any four buttons in the system design including Preset selection and control of any single value change, including: gains, threshold, frequency, etc.



- **Power status LED**

When the device is Powered On, this indicator will light blue.
- **Network LED**





When the device has an Ethernet cable connected, the Network status LED will light orange once the processor initializes. If there is no Ethernet cable attached, this light will remain off.
 Note: When the Network status LED is on, it does not indicate that you have established a Network connection - only that an Ethernet cable is connected to the processor. Proper Network connection is displayed in Xilica Designer's Network view. For more detail please refer to 'Network view' on Page 12.
- **On/off push button**

Program processor on/off control functions into any Mini devices on/off push button using the Xilica Designer software.
- **Label slot**

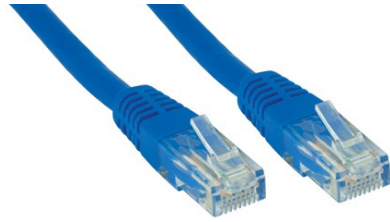
Place supplied or unique label in label slot and cover with included protective plastic cover.
- **Level control**

Program processor level control function into any Mini devices using the Xilica Designer software.
- **Level indicator LED**



-  **Ethernet connector** Connect to the network using an Ethernet Cat 5/6 cable (and power if using Power over Ethernet (PoE). The port is a standard RJ45 (Ethernet).
-  **Power supply connector** Power the device using the included external power supply. If you are sending Power over Ethernet (PoE), the external power supply is not needed.
-  **IP Reset button** Reset the IP Address by following the IP Reset Procedure. (Refer to connection troubleshooting: Page 13)
-  **USB connector** Not used. (Xilica use only)

All wired connections use a standard RJ45 Cat 5/6 (Ethernet) connection. Xilica Designer and XTouch Applications can also be connected via a Wi-Fi connection, but this is not recommended.



Standard RJ45 cable

A) DHCP enabled router or server/router combination (Recommended)

With DHCP enabled routers and servers, the mini wall control will automatically obtain the IP address upon power up and connection.

It is recommended to use a router and PoE switch. This combo provides DHCP as well as power to the wall controls. Linksys routers and Netgear switches are recommended.

B) Non-DHCP indirect connection (Non-DHCP Poe switches)

When Mini wall controllers are connected indirectly to the computer network via a switch and DHCP is not available to assign IP addresses, the connection process is not automatic.

1. Single mini device (Non-DHCP)

Once no DHCP is detected, the mini control will either try to connect using the IP address last assigned and stored on the device or attempt to revert to its default IP address of 169.254.64.64. Under some conditions, the processor may refuse to relinquish its stored IP addresses or revert to its default IP address and thus refuse to connect. We recommend performing an IP Reset (Page 13).

2. Multiple mini controls (Non-DHCP)

For multiple mini controls connected to the network with no DHCP available, the user will have to manually assign unique IP addresses to each device. (Page 15-17)

Connect Mains Power

Before getting started, please check that the Xilica Designer software and device firmware are compatible/up to date. (Please refer to Firmware upgrade on Page 18)

Power On Devices

With your devices connected as a network, power on all devices. On power up, the blue power status LED will light.

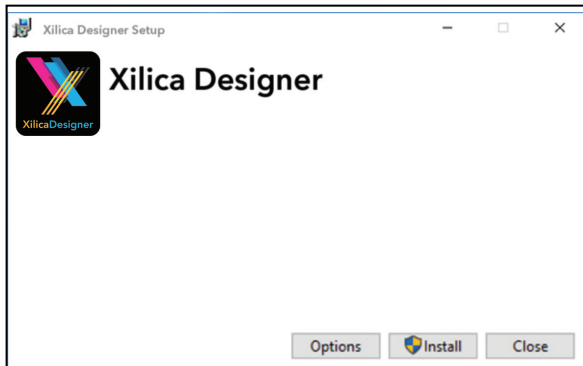
If the device has an Ethernet cable connected, the orange Network LED will light once the device initializes. (Please note that this does not mean you have established a network connection but only that an Ethernet cable is connected. Network connection is displayed in Xilica Designer's Network view.

Upon power up, the processor will search for a DHCP router, switch or server to obtain an IP address. If it locates a DHCP server or router, it will connect quickly. If not, the device will revert to its default IP address (169.254.64.64). If you are using a non-DHCP direct connection, please follow 'Manual IP address assignment' on page 15-17.

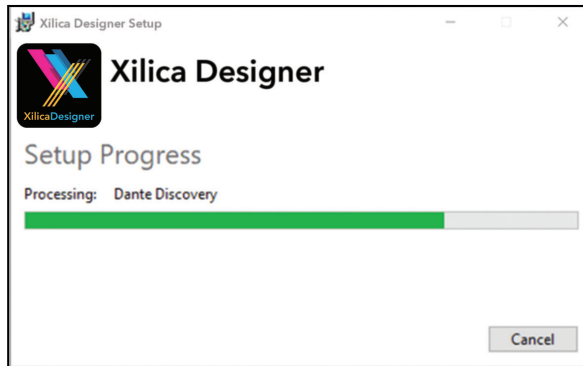
Xilica Designer Software Installation

Windows Platform Installation

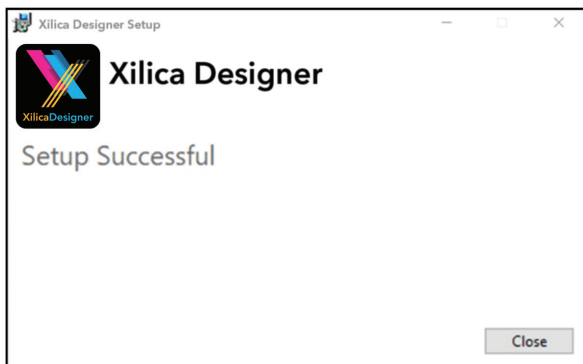
1. With the Xilica USB thumb drive included with your Xilica product, transfer the files from the USB to a memorable location on your computer. Alternatively, you can download the latest version of the Xilica Designer software from the Xilica website (www.xilica.com). It is highly recommended that you make sure you are using the latest version.
2. Double click on the 'XilicaDesigner.exe.' file saved on your computer.
3. When asked to install the file, click 'Install' to continue.



4. Allow the program to complete the installation process. This may take a several minutes.



5. When complete, Windows will ask for permission to allow firewall access. The suggested setting is to allow Xilica Designer to communicate in Private networks, such as home or work. Allow access to public networks at your own discretion. Check the appropriate boxes, then click 'Allow Access' to finish.
6. The Xilica Designer software is now installed.

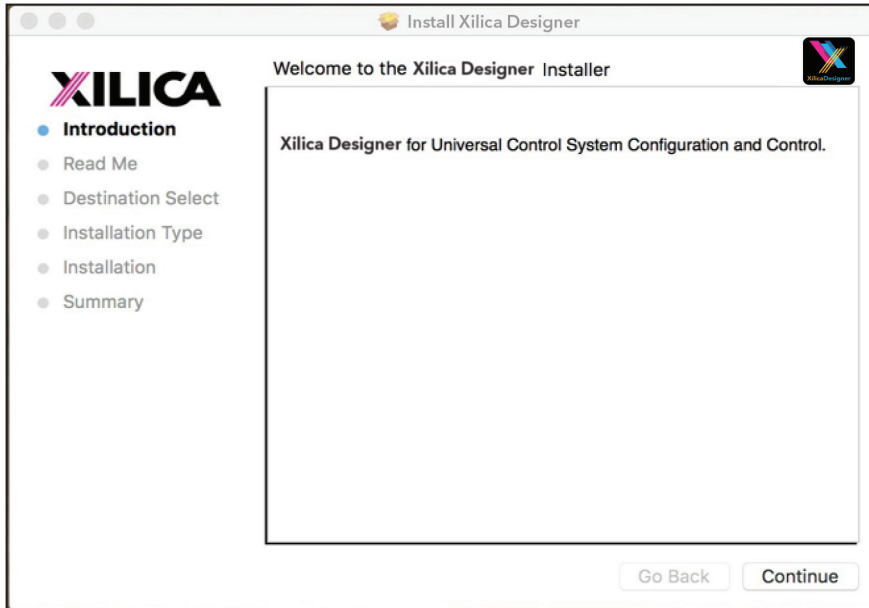


Installation Notes

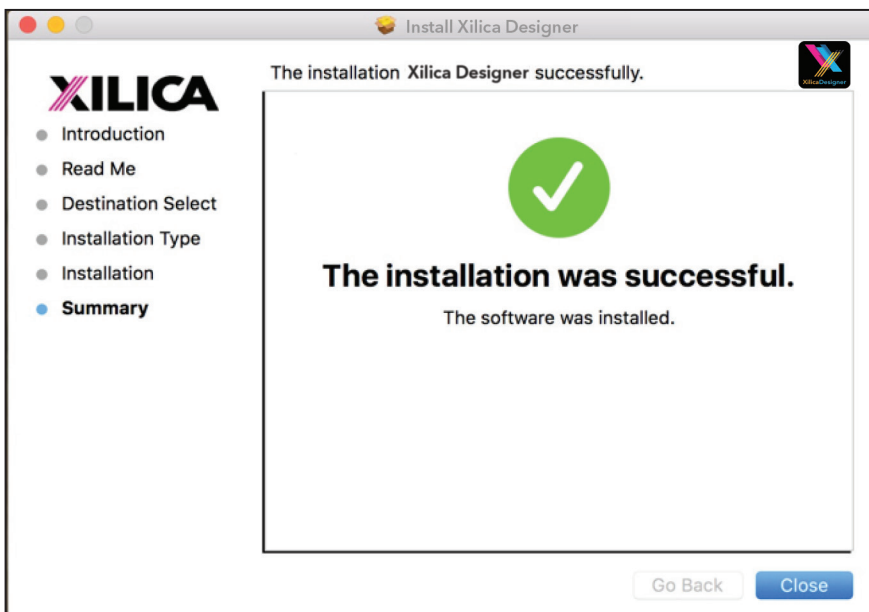
If a personal Firewall is set up on your computer, a pop-up Firewall window may ask whether users want to "Block" or "Allow" Xilica Designer from accessing the network. Select "Allow" to continue the installation.

Mac OSX Platform Installation

1. With the Xilica USB thumb drive included with your Xilica product, transfer the files from the USB to a memorable location on your computer. Alternatively, you can download the latest version of the Xilica Designer software from the Xilica website (www.xilica.com)
2. Double click on the 'XilicaDesigner.mpkg.' file saved on your computer.
3. OSX will display an installation dialogue. Read and follow each step carefully, then click 'continue' to proceed.

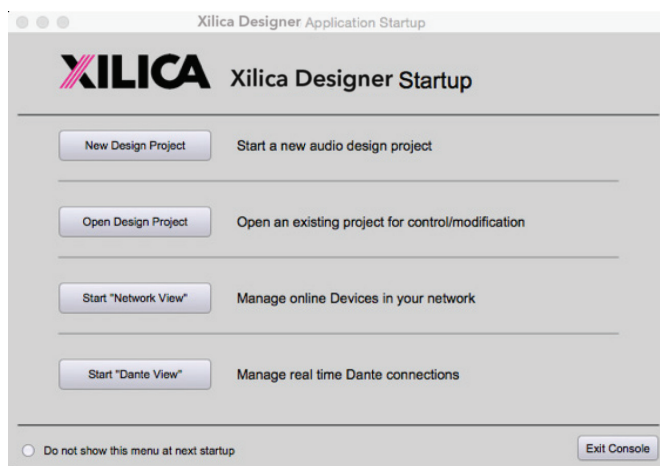


4. When the installation is successful, the following dialogue will be displayed.



Launch the Xilica Designer Software

Upon launching the Xilica Designer software, a start-up window will pop up.



You may select a 'New Design Project', 'Open Design Project', 'Start Network View' or 'Start Dante View'. (Network and Dante View are also available within the Xilica Designer software).

Select 'Start Network View'.

Network view



The Network View displays all processors and control devices on the network. The Network View displays information such as the device model, a network connection indicator, Computer address, IP address, Manufacturer and the firmware version.

In Network View, you should see your device(s) listed.

At the top left of the device block is a network connection indicator. This indicator displays three colors: red, yellow and green. (Circled in Red)

Network Connection Indicators:

- Green: The device is Connected and operational.
- Yellow: The device is Connected and online, but not operational. Hovering over the network indicator will display a pop-up message of identified problems. (Normally this would indicate that no device design is loaded.)
- Red: The device is not connected and offline. There is no communication between the Xilica Designer software and the device. Please check all cables, modular cards, connections and power. If the processor is busy performing a firmware upgrade or is in the process of rebooting, this may be a temporary offline interruption.

At times you may just see an exclamation mark (!). This indicates that a firmware upgrade is available.

Normally this is not an issue unless there are updated modules in the project file that the outdated firmware does not support.

Connection Problems?

Yellow Network indicator

In Xilica Designer's Network View, if there is a Yellow network connection indicator at the top left of the device, the device is connected and online, but Not operational. To assist in identifying the problem, hover your cursor over the device network indicator and a pop-up message will identify the problems it has detected.

Probable causes include:

Non-DHCP Connection

When you are Not connected to a DHCP enabled router/switch/server, the device will revert to its auto-configured IP Address (169.254.64.64). In Network View, you can view the IP address displayed for your device(s). If the default IP address is shown, the default IP address is in effect.

If the default IP address is incorrect, please follow the 'IP Reset' instructions below.

For multiple devices connected to the network with no DHCP available, the user will have to manually assign unique IP addresses to each device. Please refer to 'Manual IP address assignment' and 'Assigning a Static IP Address to your computer' on Page 15-17.

DHCP Connection

If you are connected to a DHCP enabled router/switch,

1. Reboot the router/switch.
2. Restart the device.
3. Shut down the Xilica Designer software and restart the program again.
4. The network connection indicator should now be green, indicating that the processor is connected, online and operational.

Note: If you are Not connecting via Wi-Fi, turn off your device's Wi-Fi so the device can connect to the desired network.

If the connection indicator is still Yellow (connected but Not operational) after the reboot procedure, it is possible that the device is holding onto a previously assigned IP address and is not allowing the processor to revert to its default IP address. To resolve this issue, the processors' network settings and password need to be reset. Please follow the IP reset / Reset processor network settings and password procedure.

IP Reset / Reset Device Network Settings

1. Shut down the Xilica Designer software.
2. Power Off the device.
3. At the back of the device, you will see a small, recessed push button labelled "IP Reset".
4. Push the IP Reset button inward.
5. While holding the button pushed in, power up the device.
6. Wait 5-10 seconds after power up until the orange "Network" light begins to flash, and then release the IP Reset push button.
7. Wait for the device to power up completely. This may take up to several minutes.
8. Open the Xilica Designer software and select "Start Network View"
9. In Network View, the network status indicator should now be green (Connected and operational)

If the default IP address of 169.254.64.64 is not shown, you're either using an incorrectly configured Static IP setup, or the DHCP server still isn't available to the device.

Software network problems continued

Device Not Ready

If the pop-up message shown says Device Not ready, please wait a few minutes until the device is ready. The device should then connect and the indicator turn Green.

Device Schematic Not Ready

The device has already been loaded with a DSP design.

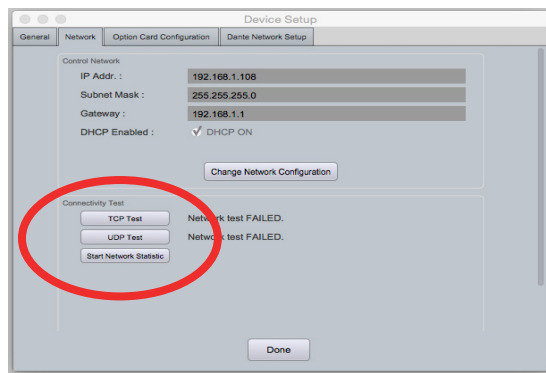
1. Please wait a few minutes to allow the connection to process. If it does not connect, restart the Xilica Designer software and reboot the device.

Error in Firmware Upgrade

The pop up message shown will print out an error code. Retry the Firmware Upgrade again.

Device can communicate to Xilica Designer with UDP but cannot communicate with TCP

1. Right click the device in Network view and select "**Device Set up**". Select the "**Network tab**"



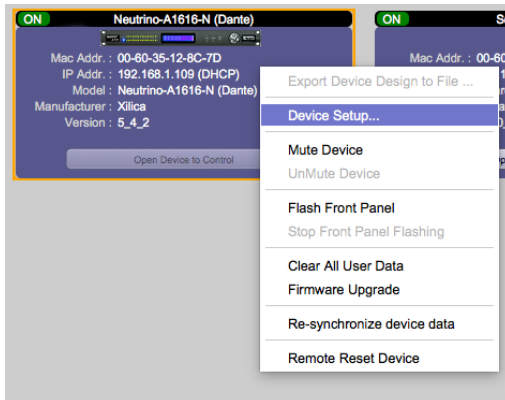
2. Click "**TCP Test**" / "**UDP Test**" to test TCP / UDP connections.
3. If failed, please check your PC's firewall or router settings. If you are not connecting via Wi-Fi. make sure that Wi-Fi is turned off.
4. Click "**Start Network Statistics**" to see network statistic information.
5. Once a change has been made, restart Xilica Designer and review your device connection.

Manual Assignment of IP Addresses for devices

There are applications that require the IP address to be manually assigned (the same solution may apply to some connection issues).

To manually assign IP addresses,

1. In the Network View, right click the device and select '**Device Setup**'.



2. In the '**Network**' tab, select "**Change Network Configuration**" to disable DHCP and to insert IP addresses manually (It also provides two built-in test procedures, device security, and device information along with Dante Configuration, if applicable).



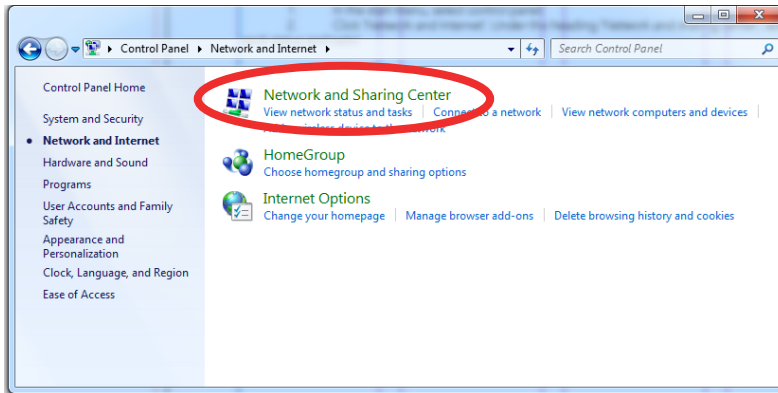
3. When finished, select "**Apply**" to save changes and then "**Done**" to exit.
4. Repeat steps 1 through 3 for each subsequent processor so each processor has its own unique IP address. (For example: 192.168.1.180/181/182...)
The devices will appear Offline in Network view until you are able to assign a static IP address to your computer. (Page 15)

Assigning a Static IP address for your computer

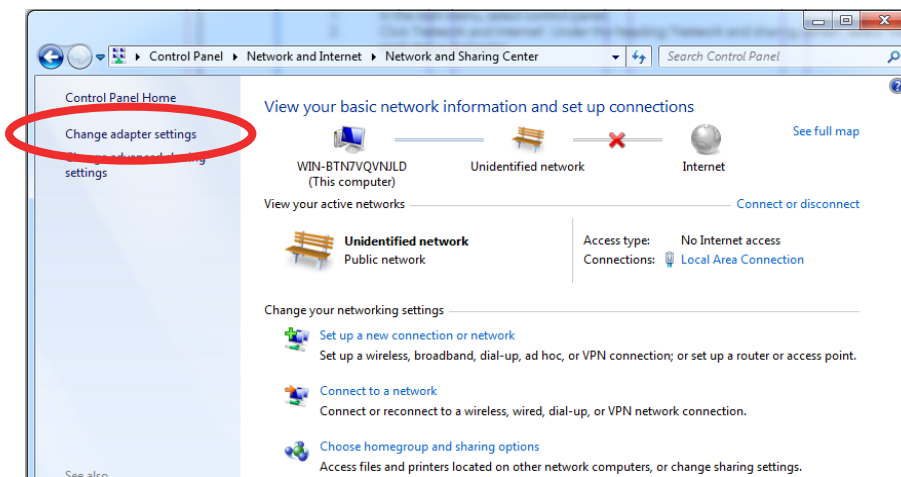
The following process applies to manually assigning a unique static IP address to your computer.

Windows platform

1. In the start menu, select **control panel**.
2. Click '**Network and Internet**'. Under the heading '**Network and sharing center**', select '**View network status and tasks**'



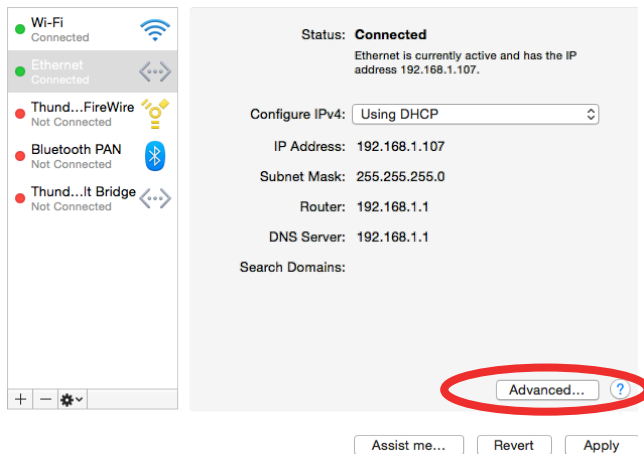
3. Click on '**Change adapter settings**' on the left tab.



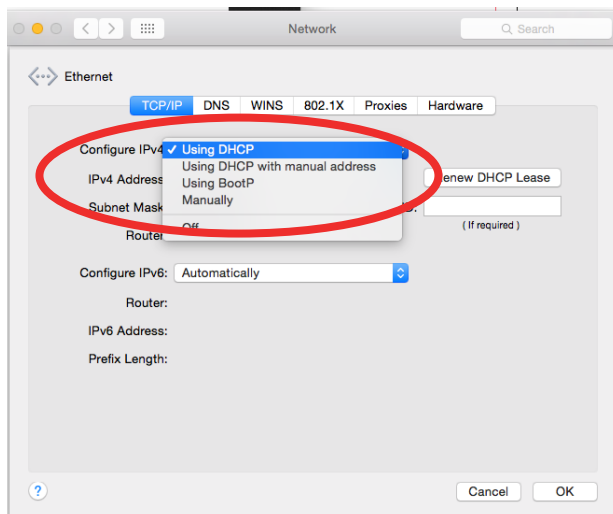
4. Select '**Local Area Connection**' and click on the **Properties** button. Select **Internet Protocol Version 4 (TCP/IPv4)** then '**Properties**' to access the manual IP settings.
5. Set up your computer's IP address to be **192.168.1.X** where X can be any value from 0-255, but unique from other manually assigned device IP addresses.
6. Use the following settings for your PC's unique static address:
IP address: 192.168.1.X (X is any value from 0-255 but unique from other device IP addresses)
Subnet mask: 255.255.255.0
Gateway: 192.168.1.1
DNS Servers: 192.168.1.1
7. If your devices are set up following the 'Manual Device IP Assignment' and 'Assigning a Static IP Address to your computer' sections, the devices will now appear online and connected in Xilica Designer's Network view.

Mac platform

1. From the Apple menu, select **System preferences**.
2. Select **'Network'**. From the sidebar, select the network interface you are using.
3. Then click **'Advanced...'**



4. In the TCP/IP tab, set **Configure IPv4** to **'Manually'** using the drop down menu.



5. Enter a static IP address in the IPv4 Address field. Set up your computer's IP address to be **192.168.1.X** where X can be any value from 0-255, but unique from other device IP addresses.
6. Use the following settings for your computers static address:
IP address: 192.168.1.X (X is any value from 0-255 but unique from other device IP addresses)
Subnet mask: 255.255.255.0
Router: 192.168.1.1
7. Click **'Ok'** and **'Apply'** to apply your changes. Then reboot the Xilica Designer software.

If your devices are set up following the 'Manual Device IP Assignment' and 'Assigning a Static IP Address to your computer' sections, the devices will now appear online and connected in Xilica Designer's Network view.

Firmware Upgrade

It is strongly recommended that you check the Xilica website (www.xilica.com) frequently for the latest software and firmware versions, as these updates may contain critical bug fixes and new features.

Note: Using an older version of software with a newer firmware or newer software with an older firmware will work but some of the features may not be available and bugs could exist.

Before you begin, check your software and firmware versions.

1. In Xilica Designer's Network View, select 'Start Network View'.



The Network View shows all processors and devices connected to the network. The device's current firmware version is displayed here. (Ex. Version 1.0.0)

2. To view the current software version, click on the "About" tab at the top of the software. This window will display your current software version.



Matching the Firmware

To assist you in determining which firmware file is appropriate for your device, refer to the chart below. Note: The file structure may be different from the date that this list was created. Always check the Xilica website (www.xilica.com) to keep updated.

#_#_# Represents the 3 digit version code of the firmware update.

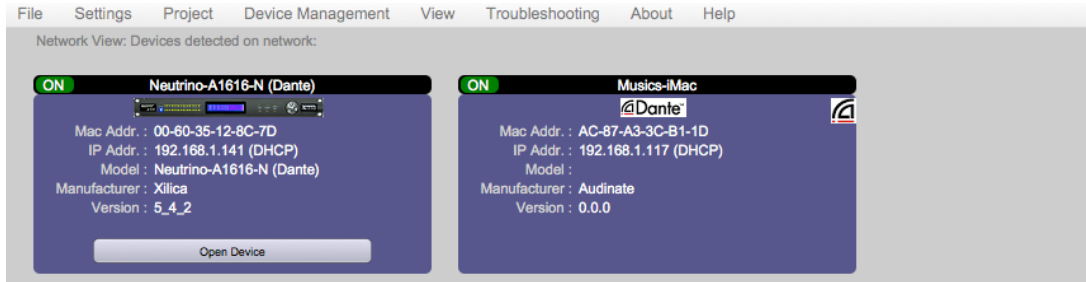
(SOLARO_#_#_#.img)	Solaro series: QR, FR
(NEUTRINO_#_#_#.img)	Neutrino series: A, A-D (AES), A-N (Dante), A-ND (Dante, AES)
(UNO_#_#_#.img)	Uno series: U, U-D (AES), U-N (Dante), U-ND (Dante, AES)
(NEUTRINO-AEC_#_#_#.img)	Neutrino AEC Series
(UNO-AEC_#_#_#.img)	Uno AEC Series
(RIO_#_#_#.img)	Rio Series
(NEUPANEL MINI_#_#_#.img)	NeuPanel Mini Series: K1, K4, S4, S8, S4K1
(NeuPanel Touch_#_#_#.zip)	NeuPanel Touch Device

Step-by-Step Firmware Upgrade Guide

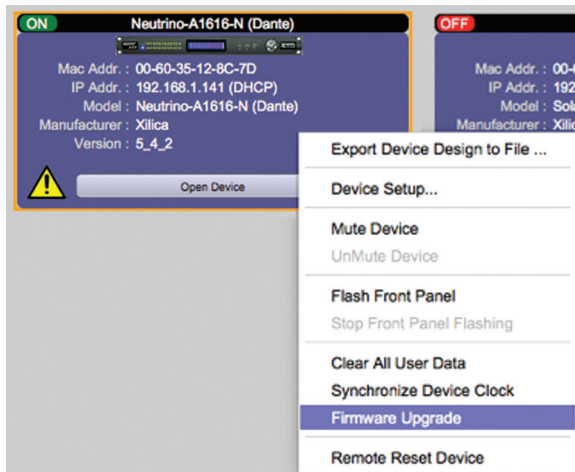
The hardware device must be connected and operational (Green indicator) before upgrading the firmware.

1. Download the latest firmware version for your device from our website. (www.xilica.com)

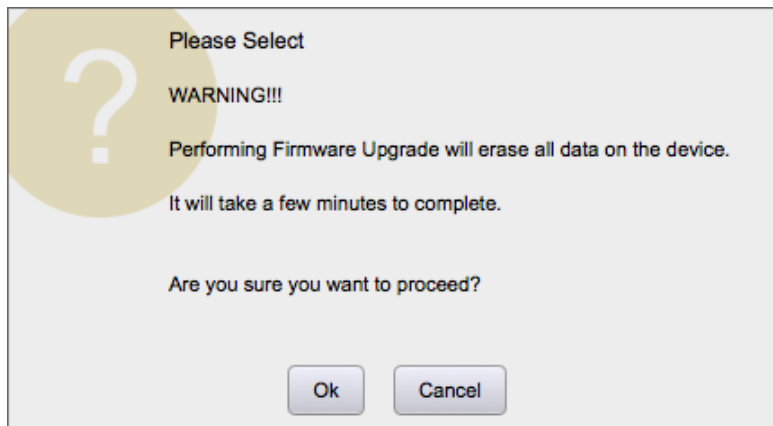
In Network View, all the units on the network are displayed. The network connection indicator is displayed at the top left of each device.



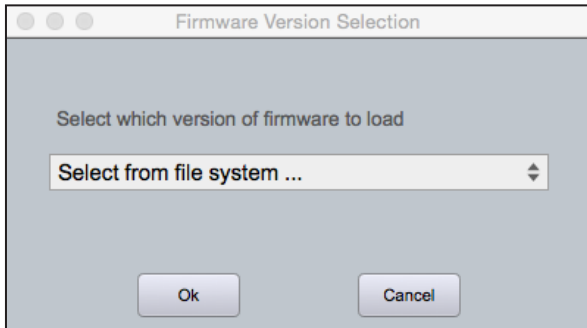
2. Save any design files from the device onto your computer. All programmed data on the device will be erased during the upgrade process. (To save, navigate to the File tab at the top left of the software and click 'Save'.)
After the firmware upgrade is complete, you may reload saved design files back into the device.
3. Right click the device that you would like to update. Select 'Firmware Upgrade'.



4. A pop up window will ask you if you'd like to proceed with the firmware upgrade. Select "OK" to proceed.



- Click 'Ok' to select a file from your computer. Then navigate to the appropriate firmware file that you have downloaded from our website. Select the correct file and click "Open".
(Ex. A Neutrino A1616-N is being updated, so the firmware file at the time of this QSG is Neutrino_5_4_2.img.)



- A status bar in the device window will monitor the Firmware upgrade progress.



- When the Firmware has been uploaded to the device, the device will automatically restart and update its internal data. This may take several minutes.
- During this period, the device network indicator will turn RED and appear offline. DO NOT POWER OFF THE DEVICE as the device is performing self-initialization.



- Once the device is initialized, the status indicator will become Yellow. This indicates that the device does not have a design file loaded to it yet.

NOTE: Powering Off your device during a firmware upgrade can result in a complete corruption of the processor. If this happens, please follow the 'Xilica Designer: Firmware Upgrade' guide.

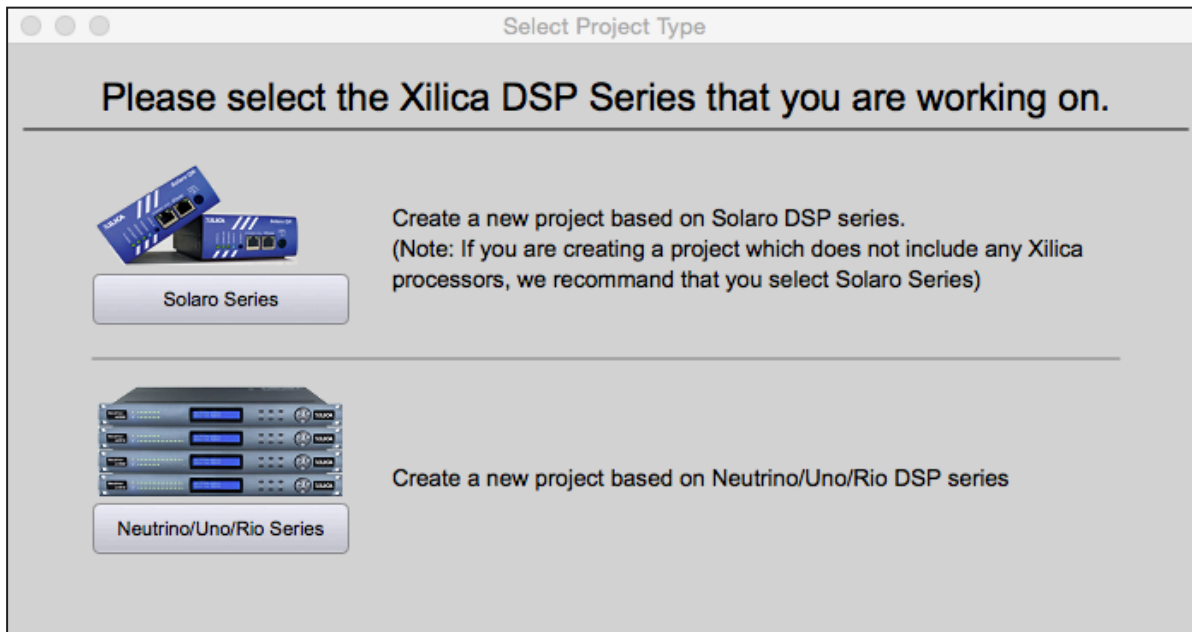
Note: If more than one unit needs a firmware upgrade, you can save time by updating them all at the same time. This can be done as long as they are the same Network and have a green network indicator (connected and operational), as displayed on the Network View page.

- The network indicator of the device should now be green and the device is ready for use.

Creating a Project

At the top left under the 'File' tab, select 'New Project'.

When creating a new project, Xilica Designer will ask you what DSP you are using. Neutrino/Uno series DSP is rather different from Solaro series DSP, therefore the two DSPs cannot be used in the same project file.



For more information, please visit the Xilica Designer section in the Xilica website: www.xilica.com

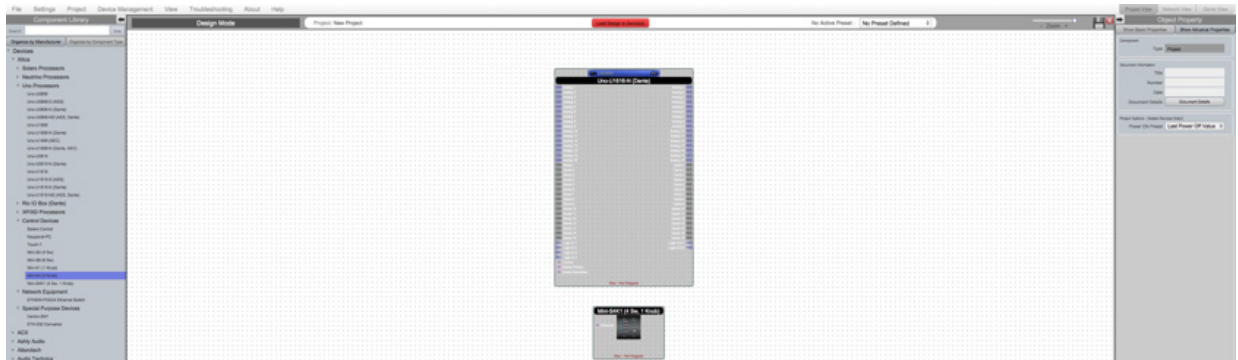
Switch between Xilica Designer's three windows: Project view, Network view and Dante view any time at the top right of the software.

The following example includes an Uno 1616-N DSP and a completed Xilica Designer project design. (Please refer to Xilica Designer: User Manual)

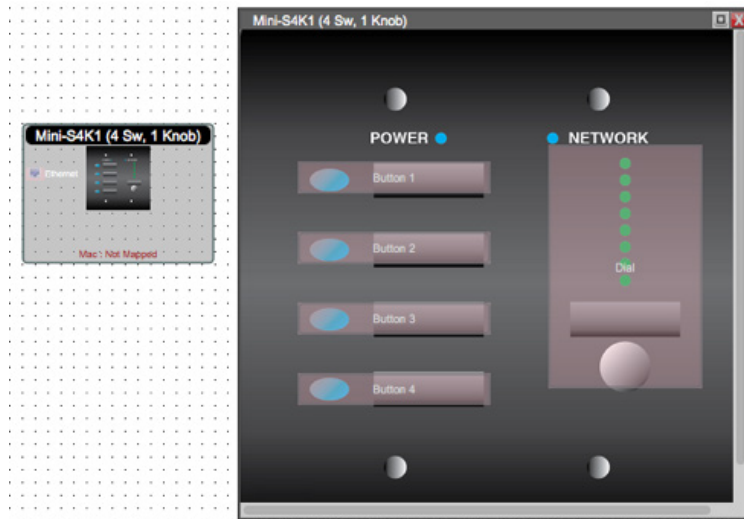
To go online, all devices must be online and operational (Green indicator in Network View), however the user can design a project in offline mode (no devices connected) and later go online when all devices are connected.

Programming the wall control

1. Drag and drop a NeuPanel Mini wall control from the Component Library menu into the work area. In this example, we will be using a Mini S4K1 wall control and an Uno U1616-N DSP.

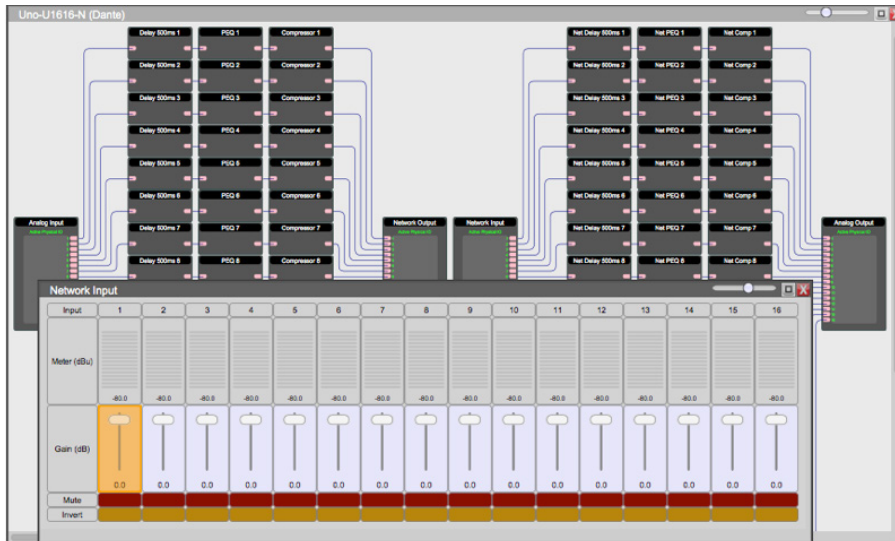


2. Double click the Mini module to open the device. The NeuPanel Mini S4K1 on/off buttons and level control are independent of each other.

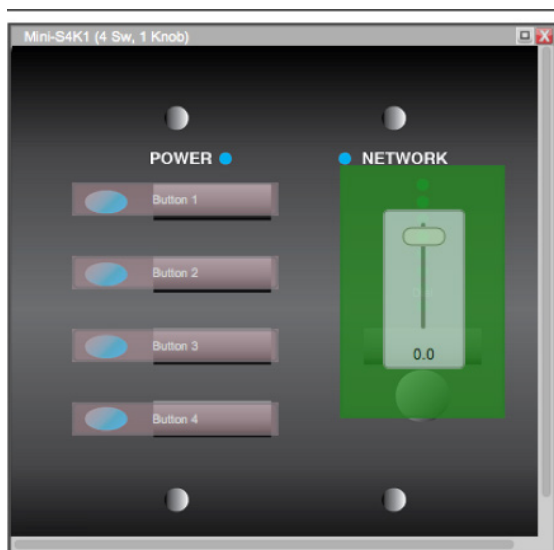


The level control on the Mini-S4K1 can only be programmed with a control fader of any single value change such as: gains, threshold, frequency, etc.

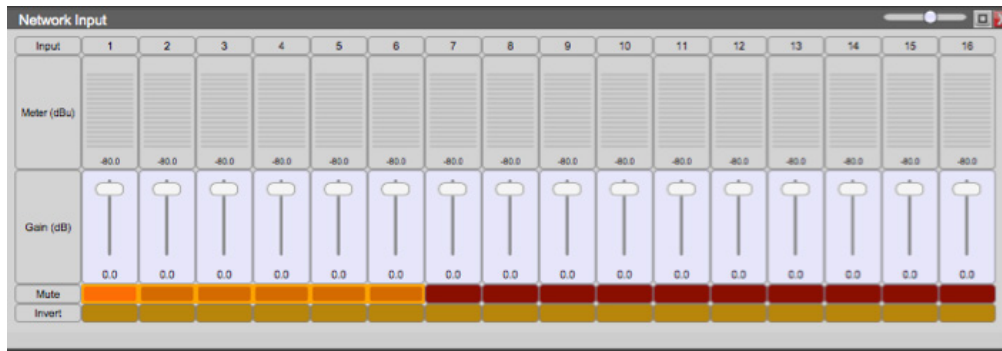
3. To program the Mini-S4K1 level control fader,
 - Double click the DSP module to open it
 - Double click the parameter module that you'd like to program
 - Select the desired fader by holding Cmd + Click (Mac) or Ctrl + Click (PC)



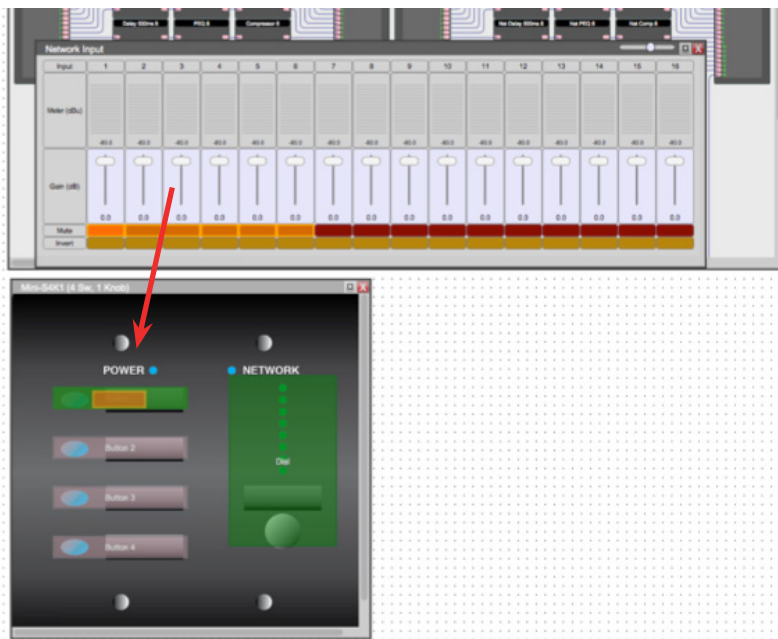
Then click and drag the fader onto the Mini-S4K1 level control knob. Programmed controls will turn green in color.



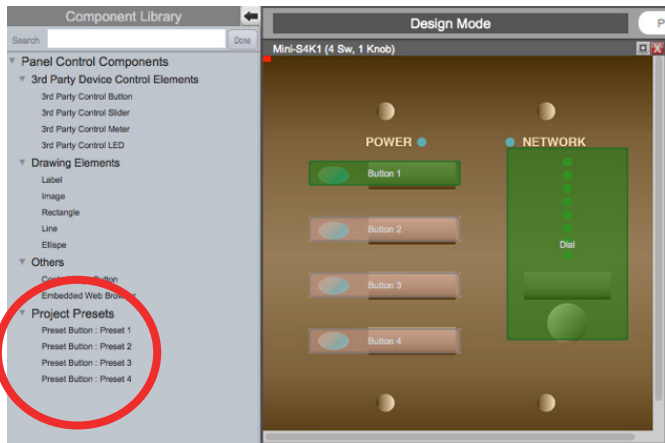
- To program the Mini-S4K1 on/off buttons, Select the desired buttons from the DSP module by holding Cmd + Click (Mac) or Ctrl + Click (PC)



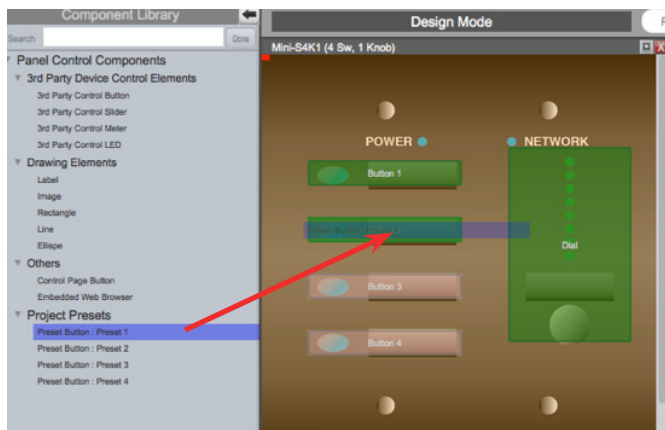
Click and drag the selected buttons onto a Mini-S4K1 control button. Programmed buttons will turn green in color.



- To trigger presets using the Mini-S4K1 on/off buttons, Open the wall control module. with the wall control module selected, the Component Library menu will list all saved 'Project Presets' (To create presets, please refer to 'Xilica Designer: User manual')



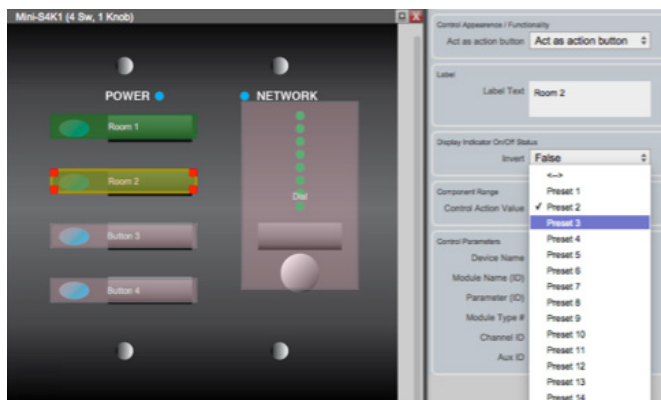
Simply click and drag the desired preset onto an available button on the wall control.



To change a control preset to another saved preset,

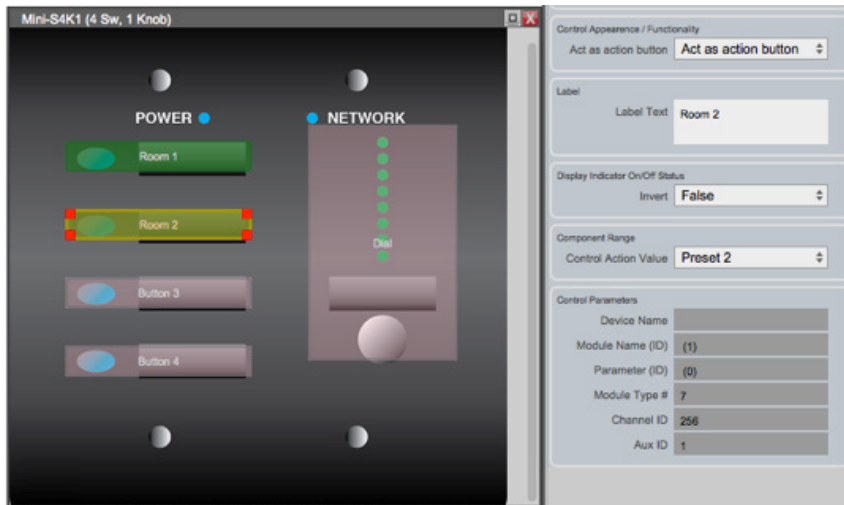
Select the button control that you would like to change

In the Object Property menu, in the 'Component Action Value' drop down list, select the new preset that you would like to switch to. (Note: This can only available for controls with programmed presets)



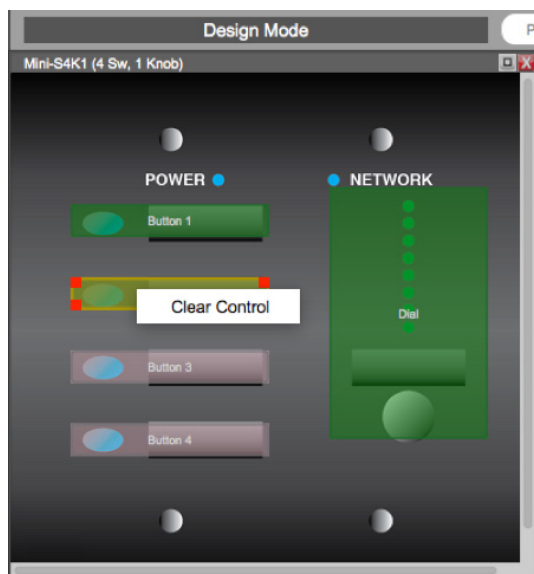
Naming buttons

1. Double click the wall control to open it.
2. Select the desired control that you would like to rename.
3. In the Object Properties menu, rename the control in the 'Label Text'.



Remove a programmed control/button

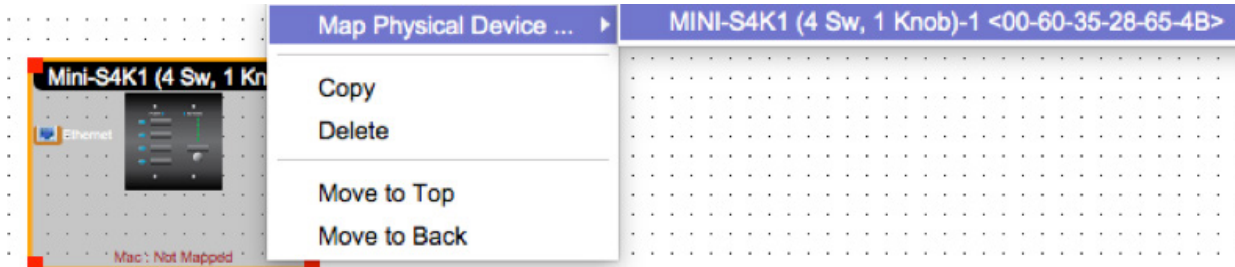
1. Select the desired button/fader on the wall control.
2. Right click and select 'Clear button'.



Map device(s)/Online mode

Note: your devices must be connected, online and operational to go online.

1. Right click each module in the Project View work area. Select "Map Physical Device".
2. Select the specific device model from the drop down list.

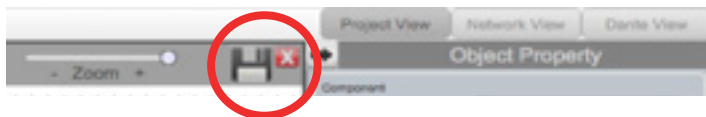


3. Once done, each mapped module in the work area is a solid grey color to indicate successful mapping.



Save project

'Save' your project by clicking the 'File' tab at the top left of the software and 'Save'. Or 'save' your project using the save icon at the top right of the software.



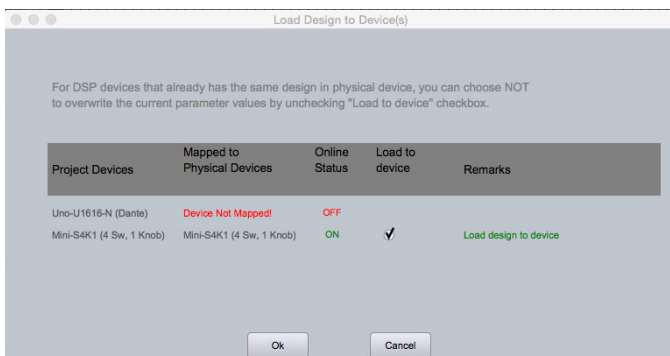
Note: This saves the Mini programming and DSP design to your computer but not to the physical Mini device itself. (See page 9: 'Going Online')

We recommend backing up the project file in an external location.

1. Before going online, you must map your devices and save your project.
2. Select the red "Load Design to Device(s)" button at the top of the Project View work area.



3. A box will appear. Select your desired devices and click "Ok" to load your design to your device(s).

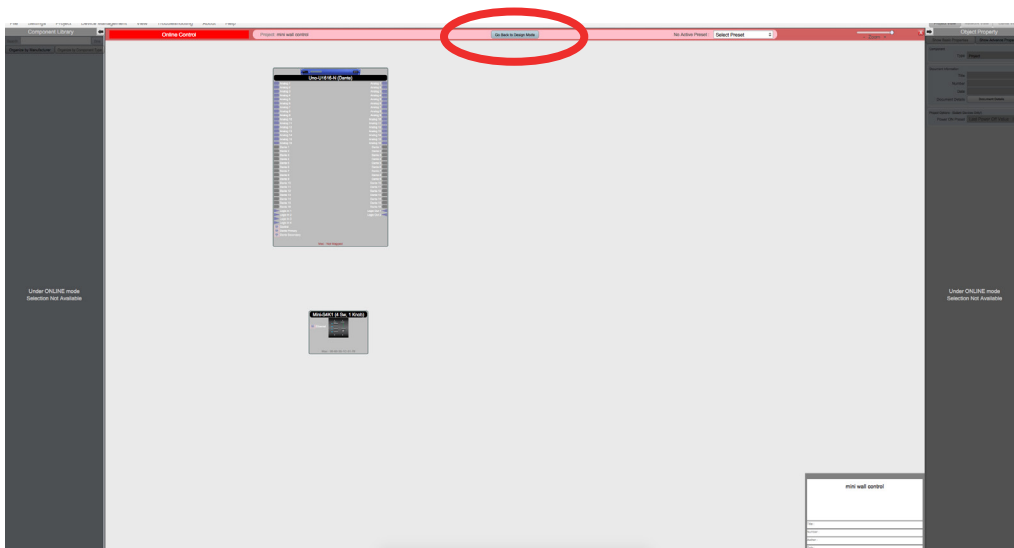


4. Once complete, you are in Online Mode.

Note that the dotted work area is now a solid color. This indicates that you are in online mode. Also, the previous 'Load Design to Device(s)' button has now changed 'Switch to Design Mode'.

Switching from Online mode to Design mode:

You cannot make changes to the Mini devices while in Online Mode. That can only be accomplished while in Design Mode. But you can make adjustments to the processors DSP module parameters while in Online Mode thus you will see a permissions window upon switching back to Design Mode from Online Mode.





Customer Support

If you'd like to contact us regarding product support or technical designs, email support@xilica.com and we'll connect you with a solutions engineer. Alternatively, if you'd like to speak to someone, you can call the following numbers for immediate assistance:

North America & Rest of world: +1 905-770-0055

Europe: +31 29940-1100

China & Hong Kong SAR: +852 2604-9382

www.xilica.com

Version: 2.0

