

GENERAL CHARACTERISTICS

Nominal Overall Diameter	166	mm
Nominal Voice Coil Diameter	50	mm
Magnet Weight	240	g
Flux Density.....	1.42	T
Weight.....	1.94	Kg

THIELE-SMALL PARAMETERS

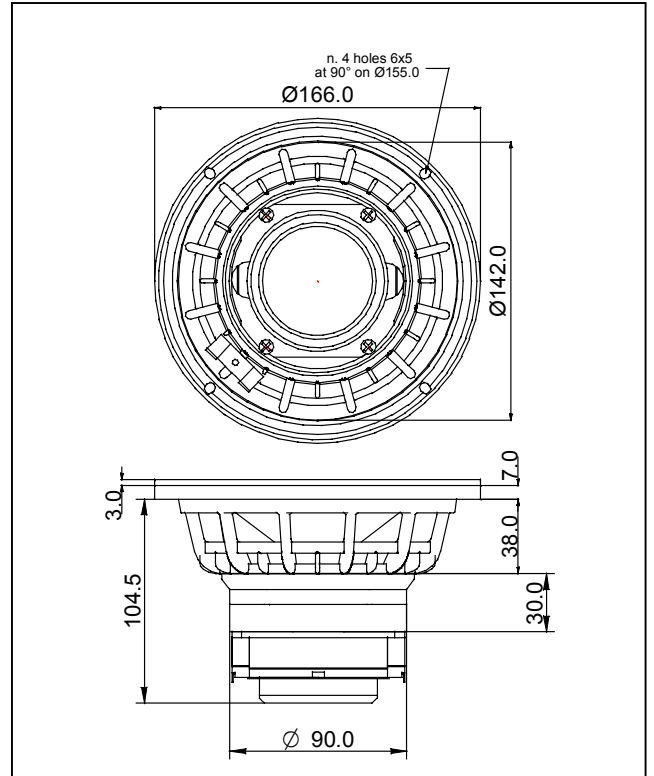
Voice Coil DC Resistance	R_E	6.10	Ω
Resonance Frequency	f_s	124.4	Hz
Mechanical Q Factor.....	Q_{MS}	4.77	
Electrical Q Factor.....	Q_{ES}	0.28	
Total Q Factor	Q_{TS}	0.27	
Mechanical Moving Mass	M_{MS}	15.6	g
Mechanical Compliance	C_{MS}	110	μm/N
Force Factor	$B \times l$	16.16	Wb/m
Equivalent Acoustic Volume.....	V_{AS}	2.2	lt.
Maximum Linear Displacement	X_{MAX}	+/-1.5	mm
Reference Efficiency	η_0	1.46	%
Diaphragm Area	S_D	122.7	cm ²
Losses Electrical Resistance.....	R_{ES}	102.3	Ω
Voice Coil Inductance @ 1kHz	L_E	0.36	mH

CONSTRUCTIVE CHARACTERISTICS

Magnet.....	Neodymium
Voice Coil Winding.....	Copper
Voice Coil Former.....	Kapton
Cone	Paper
Surround.....	Treated Cloth
Dust Dome	Solid Paper
Basket	Aluminium Die-Cast

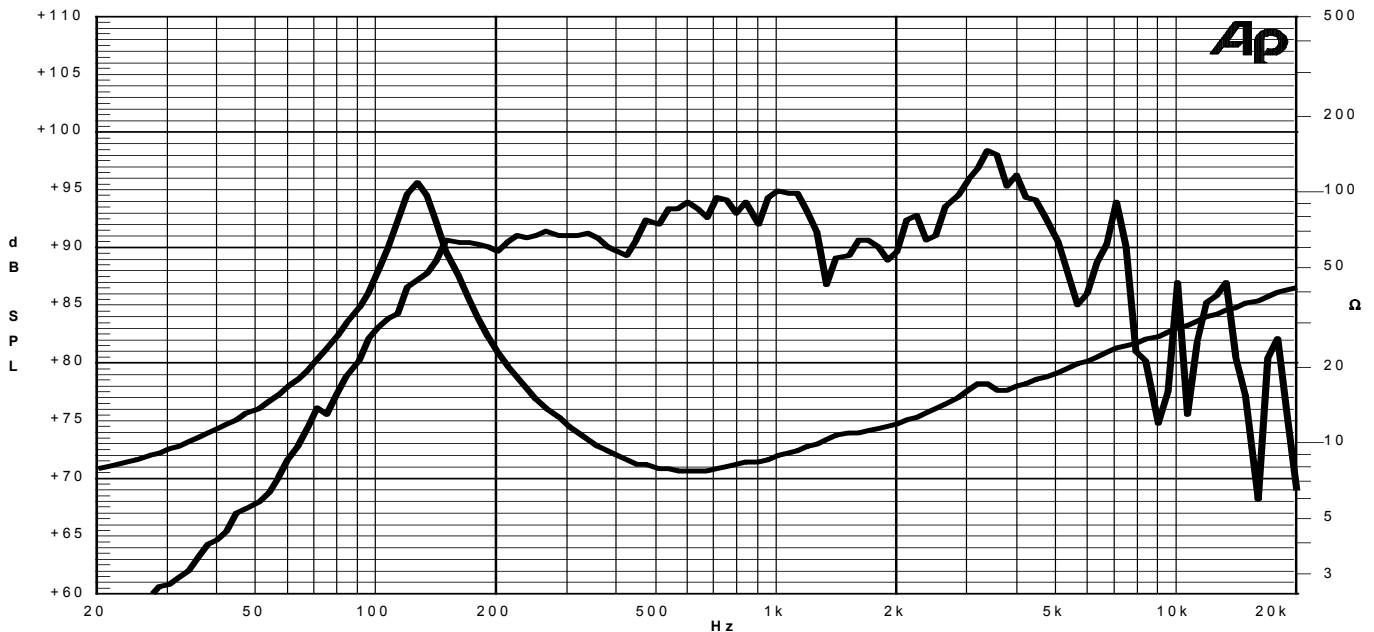
ELECTRICAL CHARACTERISTICS

Nominal Impedance.....	8	Ω
Musical Power	300	W
Rated Power*	150	W
Sensitivity @ 1 W, 1 m	95.0	dB



*rated power measured with 2 hours test with pink noise signal, 6 dB crest factor, loudspeaker mounted on enclosure
Thiele-Small parameters measured with LASER system

Frequency Response on IEC Baffle (DIN 45575) @ 1 W, 1 m - Impedance



GENERAL CHARACTERISTICS

Nominal Overall Diameter	78	mm
Nominal Voice Coil Diameter	25	mm
Magnet Weight	92	g
Flux Density.....	1.92	T
Weight.....	0.41	Kg

THIELE-SMALL PARAMETERS

Voice Coil DC Resistance	R_E	5.30	Ω
Resonance Frequency	f_s	1700	Hz

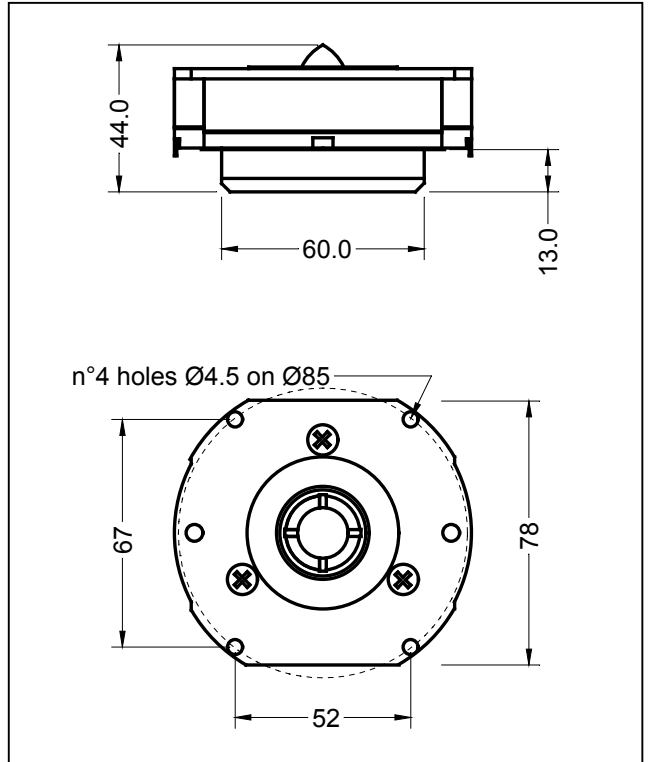
CONSTRUCTIVE CHARACTERISTICS

Magnet.....	Neodymium
Voice Coil Winding.....	Aluminium Flat Wire
Voice Coil Former.....	Kapton
Voice Coil Winding Height.....	2.1 mm
Diaphragm	Tri-acetate Film
Air Gap Height.....	2.0 mm
Ferrofluid in Air Gap	No
Throat Diameter	25 mm
Horn.....	ABS

NOTES

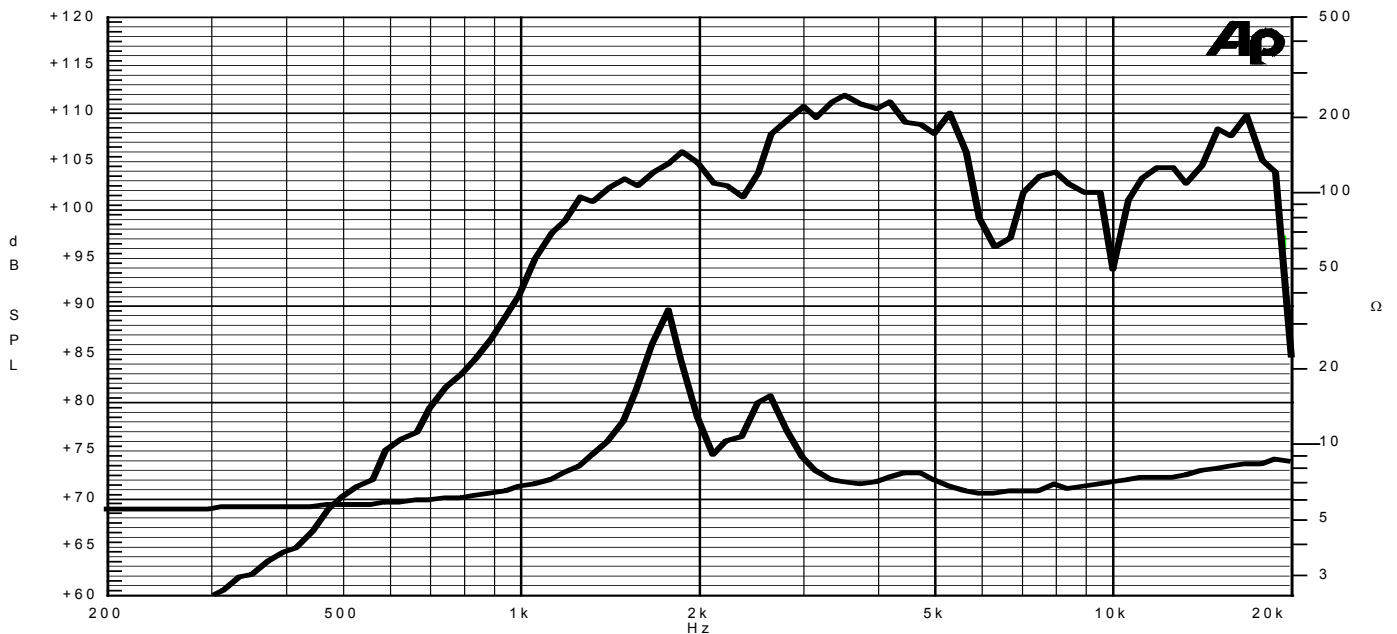
ELECTRICAL CHARACTERISTICS

Nominal Impedance.....	8	Ω
Musical Power	40	W
Rated Power*	20	W
Sensitivity @ 1 W, 1 m	105.3	dB



*rated power measured with 2 hours test with continuous pink noise signal, 6 dB crest factor, HP filter 3kHz-12dB/Oct

Frequency Response @ 1 W, 1 m (Driver mounted as Coaxial Unit) - Impedance (without horn)



Due to continuing product improvement, the features and the design are subject to change without notice.

26/03/07