

Type Number: D2604/830000

Features:

Key Features:

- Dome Tweeter
- Extended Frequency to Above 30KHz
- High sensitivity - 92dB
- Low Resonance Frequency - 630Hz
- Low Distortion
- Wide Dispersion
- Silk Fabric Diaphragm, Large Surround
- Copper-clad Aluwire



Specs:

**Electrical Data**

Nominal impedance	Zn	4	ohm
Minimum impedance	Zmin	-	ohm
Maximum impedance	Zo	17	ohm
DC resistance	Re	2,8	ohm
Voice coil inductance	Le	-	mH

**Power Handling**

100h RMS noise test (IEC)	-	W
Long-term Max Power (IEC18.3)	-	W
Max linear SPL (rms) @ power		dB/W
Short-term Max Power (IEC18.2)		W

**T-S Parameters**

Resonance Frequency	fs	630	Hz
Mechanical Q factor	Qms	4,32	
Electrical Q factor	Qes	0,79	
Total Q factor	Qts	0,69	
Force factor	Bl	2,20	Tm
Mechanical resistance	Rms	0,47	Kg/s
Moving mass	Mms	0,42	g
Suspension compliance	Cms	-	mm/N
Effective cone diameter	D		cm
Effective piston area	Sd	8,00	cm <sup>2</sup>
Equivalent volume	Vas		ltrs
Sensitivity (2.83V/1m)		92,08	dB

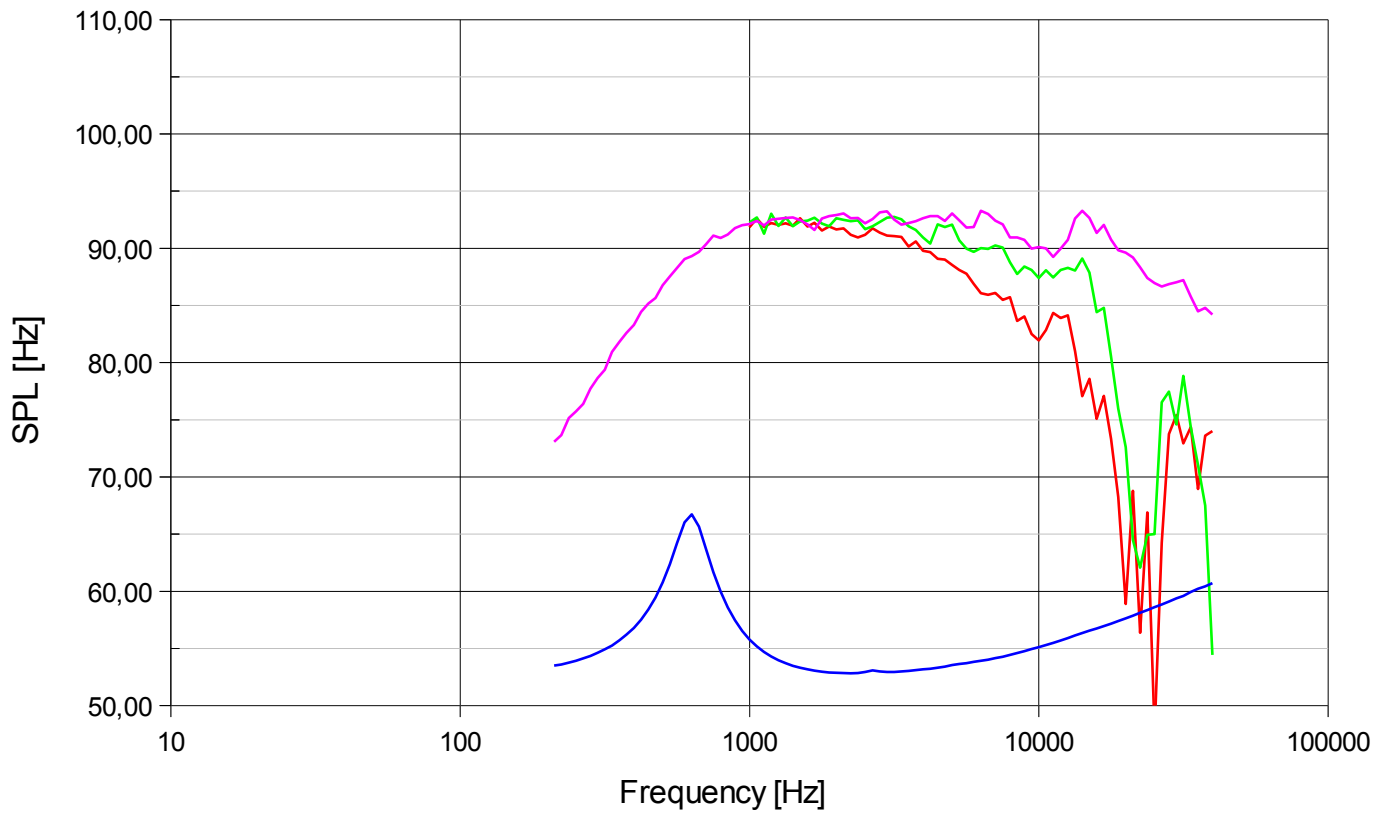
**Voice Coil and Magnet Parametres**

Voice coil diameter	25,0	mm
Voice coil height	2,0	mm
Voice coil layers	2,0	
Height of gap	2,5	mm
Linear excursion +/-	0,3	mm
Max mech. Excursion +/-	-	mm
Flux density of gap		mWb
Total useful flux		mWb
Diameter of magnet	72,0	mm
Height of magnet	15,0	mm
Weight of magnet	-	Kg
Unit net weight	0,5	Kg

**Notes:**

IEC Specs refer to IEC 60268,5 third sdition.  
All Scan Speak products are RoHS compliant

Frequency:



Mechanical Dimensions:

