

FaderPort™ 16 and FaderPort 8 Multichannel Production Controllers

Owner's Manual



Table of Contents

1 Overview — 1

- 1.1 Introduction — 1
- 1.2 Features — 2
- 1.3 Studio One Artist Features — 2
- 1.4 What's in the Box — 3
- 1.5 What's in your My PreSonus Account — 4
- 1.6 Firmware Updates — 4

2 Studio One — 6

- 2.1 Getting Started — 6
- 2.2 Grouping Faderports — 7
- 2.2 Channel Strip — 8
 - 2.2.1 Select Button Modifiers — 9
 - 2.2.2 Solo and Mute Clear — 9
- 2.3 Transport Controls — 9
- 2.4 The Session Navigator — 10
 - 2.4.1 F1-F8 Functions — 11
- 2.5 Automation Controls — 11
 - 2.5.1 User Functions — 11
- 2.6 Fader Modes — 12
 - 2.6.1 Edit Plug-ins — 12
 - 2.6.2 Sends Mode — 13
 - 2.6.3 Cue Mix Sends Mode — 14
 - 2.6.4 Input Gain Mode — 14
- 2.7 Mix Management — 15
 - 2.7.1 Metronome Control — 15
- 2.8 Advanced Studio One Controls — 16
 - 2.8.1 Link Mode — 16
 - 2.8.2 Control Link — 16
 - 2.8.3 Macro Controls (Channel Editor) — 16

3 Pro Tools (HUI) — 17

- 3.1 Getting Started — 17
- 3.2 Channel Strip — 18
 - 3.2.1 Select Button Modifiers — 18

- 3.2.2 Select Button Editing Functions — 19

3.3 Transport Controls — 19

3.4 The Session Navigator — 20

- 3.4.1 F1-F8 Functions — 20

3.5 Automation Controls — 21

3.6 Fader Modes — 21

- 3.6.1 Edit Plug-ins — 22
- 3.6.2 Sends Mode — 23
- 3.6.3 Pan Mode — 23
- 3.6.4 Timecode — 23

3.7 Session Management — 23

4 Logic (MCU) — 24

4.1 Getting Started — 24

4.2 Channel Strip — 27

- 4.2.1 Modifier Buttons — 27
- 4.2.2 Panning — 28

4.3 Transport Controls — 28

4.4 The Session Navigator — 29

- 4.4.1 F1-F8 Functions — 30
- 4.4.2 Large/Temporary Marker Mode — 30

4.5 Automation Controls — 32

4.6 Fader Modes — 32

- 4.6.1 Edit Plug-ins — 33
- 4.6.2 Timecode — 34
- 4.6.3 Sends — 34

4.7 Mix Management — 35

5 Cubase / Nuendo (MCU) — 36

5.1 Getting Started — 36

5.2 Channel Strip — 39

- 5.2.1 Select Button Modifiers — 40
- 5.2.2 Select Button Editing Functions — 40

5.3 Transport Controls — 40

5.4 The Session Navigator — 41

- 5.4.1 F1-F8 Functions — 41

5.5 Automation Controls — 42

5.6 Fader Modes — 42

5.6.1 Edit Plug-ins — 43

5.7 Mix Management — 43

6 Sonar (MCU) — 44

6.1 Getting Started — 44

6.2 Channel Strip — 47

6.2.1 Select Button Modifiers — 47

6.3 Transport Controls — 48

6.4 The Session Navigator — 48

6.5 Automation Controls — 49

6.6 Fader Modes — 49

6.6.1 Edit Plug-ins Mode — 50

6.6.2 Sends Mode — 50

6.6.3 Pan Mode — 50

6.6.4 Timecode — 50

6.7 Mix Management — 50

7 Ableton Live (MCU) — 51

7.1 Getting Started — 51

7.2 Channel Strip — 53

7.2.1 Select Button Modifiers — 53

7.2.2 Select Button Editing Functions — 54

7.3 Transport Controls — 54

7.4 The Session Navigator — 55

7.5 Automation Controls — 56

7.6 Fader Modes — 56

7.6.1 Edit Plug-ins — 56

7.6.2 Timecode — 57

7.7 Mix Management — 57

7.8 Custom Live Controls — 57

8 MIDI Mode — 58

8.1 Getting Started — 58

8.1.1 Using MIDI Mode with DAW Mode — 58

8.1.2 Implementation — 58

8.1.3 DAW Setup of the MIDI Mode — 59

8.2 Using MIDI Mode with
DAW Operating Mode — 59

8.2.1 DAW Setup for MIDI Mode — 59

8.3 MIDI Mappings — 60

9 Studio One Artist Quick Start — 62

9.1 Installation and Authorization — 62

9.2 Setting Up Studio One — 63

9.2.1 Configuring Audio Devices — 64

9.2.2 Configuring MIDI Devices — 65

9.3 Creating a New Song — 69

9.3.1 Configuring Your Audio I/O — 70

9.3.2 Creating Audio
and Instrument Tracks — 72

9.3.3 Recording an Audio Track — 73

9.3.4 Adding Virtual Instruments
and Effects — 73

10 Customizing Your FaderPort — 75

10.1 Tune Faders — 75

10.2 Tune Fader Sensitivity — 75

10.3 Test Modes — 76

10.4 Factory Default — 76

10.5 Display Options — 76

11 Appendix — 78

11.1 Troubleshooting — 78

11.2 FaderPort Multichannel Controller
MIDI Protocol — 79

11.2.1 SysEx — 79

11.2.2 Faders — 80

11.2.3 Encoders — 80

11.2.4 Buttons and LEDs — 80

11.2.5 Value Bar — 83

11.2.6 Scribble Strips — 83

1 Overview

1.1 Introduction



Thank you for purchasing the PreSonus® FaderPort™ 16 or FaderPort 8 multichannel production controller. Featuring ultra-smooth, touch-sensitive, motorized faders; digital scribble strips; complete automation and transport controls; and the unique Session Navigator, FaderPort multichannel controllers make mixing in your favorite DAW application quick and easy.

PreSonus Audio Electronics is committed to constant product improvement, and we highly value your suggestions. We believe the best way to achieve our goal of constant product improvement is by listening to the real experts: our valued customers. We appreciate the support you have shown us through the purchase of this product and are confident that you will enjoy your FaderPort!

About this manual: We suggest that you use this manual to familiarize yourself with the features, applications, and correct connection procedures for your FaderPort before trying to connect it to your computer. This will help you avoid problems during installation and setup.

This manual describes the FaderPort behavior in the DAWs for which each operation mode was designed. **Please see Section 8.1 for applications not listed in the Table of Contents.**

Throughout this manual, you will find **Power User Tips** that can quickly make you a FaderPort expert and help you get the most out of your investment.

This manual describes the functions of both the FaderPort 16 and the FaderPort 8. Where differences occur, the FaderPort 16 will be called out first, followed by the FaderPort 8.

1.2 Features

- Touch-sensitive, 100 mm long-throw, motorized faders
- LCD Scribble Strip displays
- Complete recording-transport controls: Play, Stop, Fast Forward, Rewind, Record, Loop
- Drop Marker, Next/Prev Marker, Next/Prev Event
- General session controls: Undo/Redo, Arm All, Solo/Mute Clear, Track Management, Click On/Off
- Session Navigator provides quick control over track scrolling, channel banking, timeline scrolling, and much more
- Channel Controls: Level, Pan, Solo, Mute, Rec Arm
- Automation Controls: Touch, Latch, Trim, Write, Read, Off
- Optional Fader functionality: plug-in edit, bus sends, pan
- macOS® / Windows® compatible with native Studio One® support and HUI and Mackie Control Universal emulation
- Customized MCU modes for Logic, Cubase, and Sonar
- Footswitch input for hands-free start/stop
- USB 2.0 connectivity

1.3 Studio One Artist Features

Once you register your FaderPort at my.presonus.com, you will find a license for PreSonus Studio One Artist recording software as well as more than 4 GB of plug-ins, loops, and samples in your user account. Studio One Artist provides all the tools and features you need for modern recording and production.

While the FaderPort works as both MCU and HUI devices in most major DAWs, inside of Studio One Professional and Studio One Artist, it provides unique functions and tight integration, making Studio One's streamlined workflow even faster. The Quick Start Guide in **Section 9** of this manual will provide you with a brief overview of Studio One Artist's features.

- Unlimited track count, inserts, and sends
- 20 high-quality, Native Effects™ plug-ins; amp modeling (Ampire XT), delay (Analog Delay, Beat Delay), distortion (RedLightDist™), dynamics processing (Channel Strip, Compressor, Gate, Expander, Fat Channel, Limiter, Tricomp™), equalizer (Channel Strip, Fat Channel, Pro EQ), modulation (Autofilter, Chorus, Flange, Phaser, X-Trem), reverb (Mixverb™, Room Reverb), and utility (Binaural Pan, Mixtool, Phase Meter, Spectrum Meter, Tuner)
- More than 4 GB of loops, samples, and instruments, featuring: Presence™ XT virtual sample player, Impact virtual drum machine, SampleOne™ virtual sampler, Mai Tai virtual polyphonic analog modeling synth, Mojito virtual analog-modeled subtractive synthesizer
- Innovative and intuitive MIDI mapping
- Powerful drag-and-drop functionality for faster workflow
- Available for macOS® and Windows®

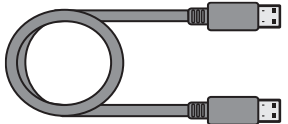
1.4 What's in the Box

Your FaderPort package contains the following:

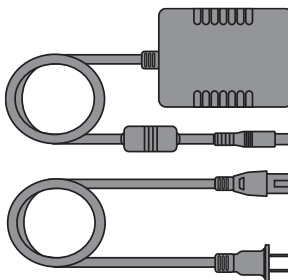
FaderPort 16 or FaderPort 8 multichannel production controller



Quick Start Guide



6' (1.8m) USB cable



External Power Supply



PreSonus Health, Safety, and Compliance Guide

1.5 What's in your My PreSonus Account

Once you register your FaderPort, you will be able to download the following:
Studio One Artist recording software and content



Universal Control (necessary for firmware updates)



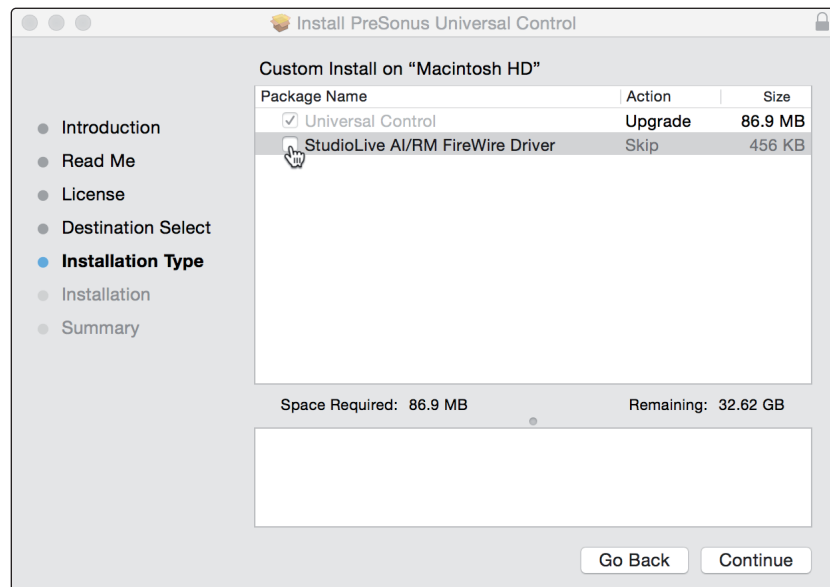
Visit <http://my.presonus.com> to register your FaderPort and download your software and license.

1.6 Firmware Updates

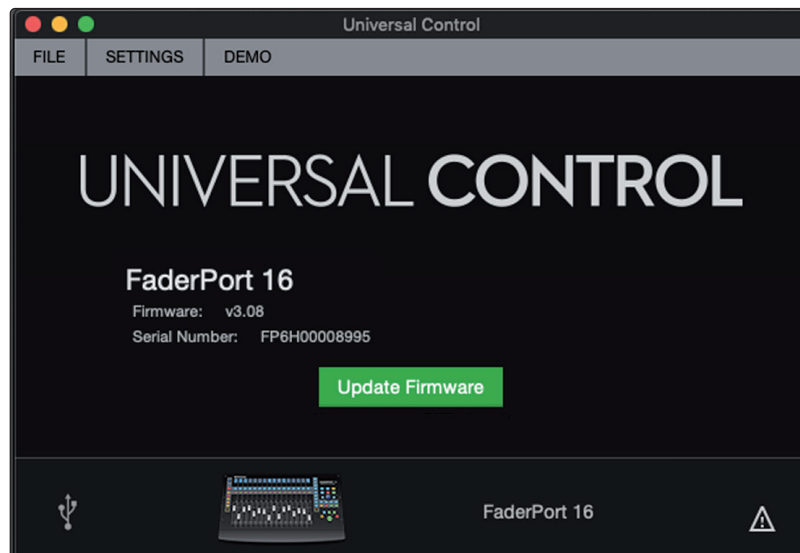
PreSonus is committed to constant product improvement. As part of this commitment, we offer periodic firmware updates that add features, improve functionality, and resolve issues that are discovered in the field. Because of this, it is highly recommended that you download Universal Control from your My PreSonus account after registering your FaderPort.

Note: At the time of this manual's publication, a firmware update is required for full functionality of your FaderPort. You must download and install Universal Control and run the firmware update on your unit.

During installation, you will be given the option to install various PreSonus audio drivers. No driver installation is required to use the FaderPort.



Once installed, connect your FaderPort to your computer.



Universal Control will alert you if there is new firmware available for your FaderPort. Clicking on the Update Firmware button will begin the update process. This process can take up to five minutes. At the end of the firmware update, you will be prompted to reboot your FaderPort.

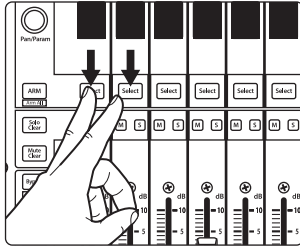
Once rebooted, your FaderPort faders may require recalibration. This is an automated process. Do not interfere with or interrupt the fader calibration process.

Note: *One of the Operating Modes must be selected to perform a firmware update.*

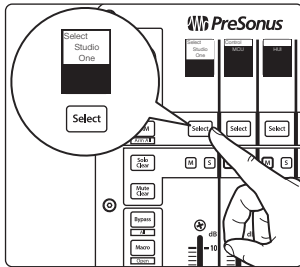
2 Studio One

2.1 Getting Started

By default, your FaderPort is configured for Studio One. No further device setup is required.

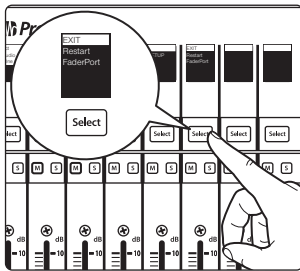


If you have changed the FaderPort's Operating Mode and would like to return to using it with Studio One, press the first two Select buttons while powering on your unit.



Press the Select button below Studio One.

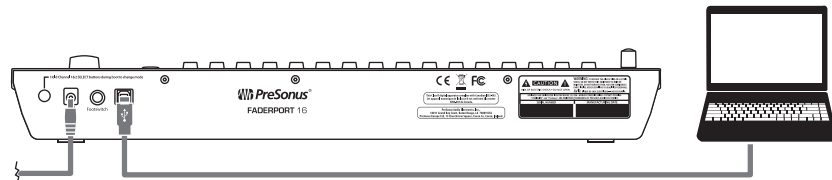
Note: In addition to Studio One, this operation mode should be used with other DAWs that provide native FaderPort support. A complete list of native-support DAW applications is available at www.presonus.com.



Once you have selected your mode, press the Select button below the "Exit" screen to reboot your FaderPort. This mode will be selected automatically every time you boot your FaderPort.

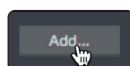
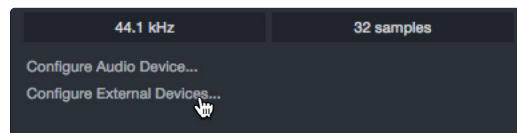
Power User Tip: From the boot menu, you can also adjust the fader sensitivity and speed to fine tune your FaderPort to work the way you want it. Please see Section 10 for more information on the customized setup modes.

The FaderPort is a class-compliant device in both macOS® and Windows®. Simply connect your FaderPort to a free USB port on your computer. No further installation is necessary.



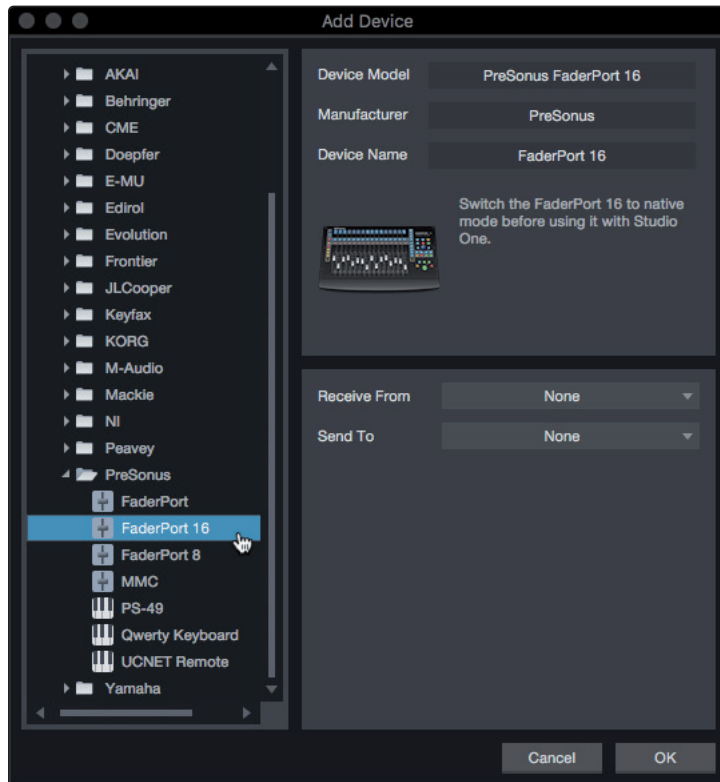
The FaderPort will automatically be added as a hardware device when Studio One is launched. Should your FaderPort not be detected for any reason, you can manually configure it as follows:

1. From the Start page, click on the Configure External Devices link.

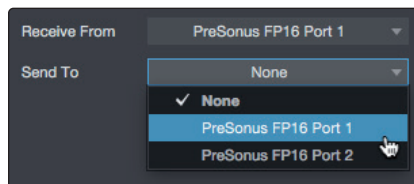


2. Click the Add button.

- From the manufacturers list at the left, click on PreSonus and then select the correct FaderPort model.



- Set the Send To and Receive From fields to “PreSonus FP16 Port 1” or “PreSonus FP8” (depending on model).



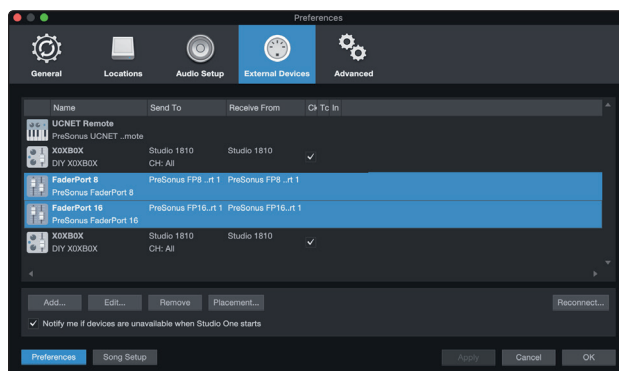
Your FaderPort is now ready for use.

2.2 Grouping Faderports

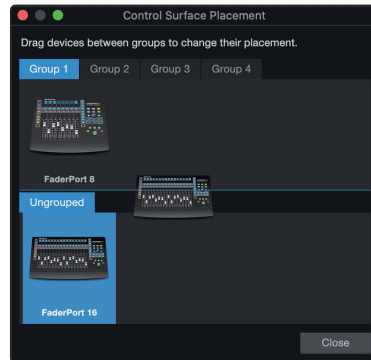
If you're running Studio One 5.2 or later, you can Group multiple FaderPort 8s and FaderPort 16s together to increase the number of simultaneously controlled channels!

Here's how to set up multiple FaderPort 8/16s:

- Open Studio One's Preferences menu (macOS, Options menu for Windows) and click External Devices.



- Click Placement. You should see your FaderPorts in the Ungrouped section.

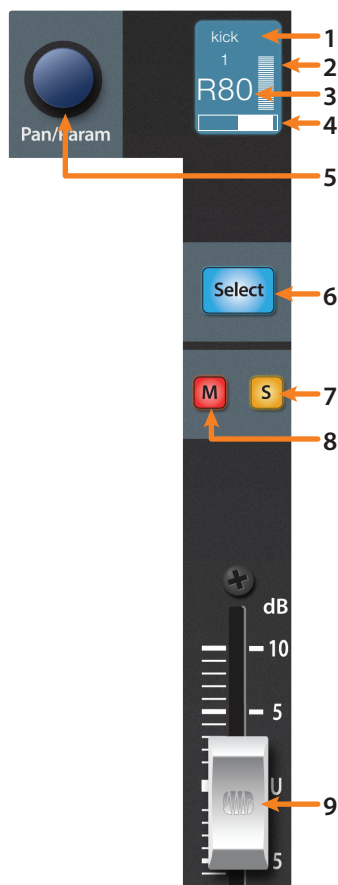


- Click and Drag your FaderPort icons up to the Group 1 area.
- Click and Drag the icons left or right to match the placement of the FaderPorts on your desk.
- Click Close.

Your FaderPorts are now grouped! Grouped devices will spread Studio One's channels across devices of the same group.

Note: while FaderPort Classic, FaderPort 2018 and ioStation 24c cannot be Grouped, they can still be used for Global or Selected channel control.

2.3 Channel Strip



- Channel Name.** Displays the Channel name.
- Metering.** Displays the channel metering. This can be turned on or off by pressing SHIFT plus the push button encoder in the Session Navigator.
- Value.** Displays the Channel's current pan position value. While the fader is being adjusted, this value will display the current fader level.
- Pan Display.** Displays the Channel's current pan position.
- Pan/Param.** Controls panning for the currently selected channel. Push to set the pan position back to center.
- Select Button.** This button selects the corresponding channel in Studio One and changes color to match the channel color codes you have chosen in your session. Holding the Shift button allows you to select multiple channels. *See Section 2.2.1 for alternate functions and modes.*
- Solo.** Isolates the corresponding channel's output signal in the mix. Press and hold to solo momentarily.
- Mute.** Mutes the corresponding channel's output signal. Press and hold to mute momentarily.
- Touch-Sensitive Fader.** This 100 mm motorized fader can be used to control volume levels, aux send levels, panning, or plug-in parameters, depending on mode. *See Section 2.6 for more information.*

Power User Tip: While in Track mode, holding the Shift button while touching and releasing a fader will reset the volume level to 0 dB.

2.3.1 Select Button Modifiers



Arm. Pressing the Arm button will allow you to arm track for recording by pressing the corresponding track's Select button.



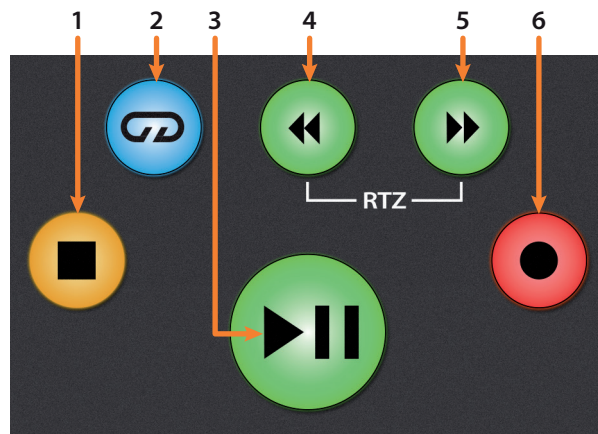
Arm All. Press Shift + Arm to arm all tracks for recording.

2.3.2 Solo and Mute Clear



Solo and Mute Clear. These buttons will clear all solos or mutes.

2.4 Transport Controls



1. **Stop.** Stops playback. Press twice to return playback-cursor to zero.
2. **Loop.** Engages / disengages Looping.
3. **Play / Pause.** Starts playback at the current playback-cursor position. Press again to pause playback.
4. **Rewind.** Press once to regress playback by bar, second, frame, or base sample rate depending on mode. Press and hold for continuous rewind. Press the Rewind and Fast Forward buttons simultaneously to Return to Zero.
5. **Fast Forward.** Press once to advance playback by bar, second, frame, or base sample rate depending on mode. Press and hold for continuous fast forward.
6. **Record.** Press to start recording at the current playback-cursor position for record-enabled tracks.

2.5 The Session Navigator

The Session Navigator provides quick navigation and session controls. Each button alters the functions of the push-button encoder and the Next and Prev buttons on either side.

Power User Tip: Press Shift with any of these buttons to access the F1-F8 Functions. These functions are user definable. See Section 2.4.1 for more information.



1. **Channel.** Encoder controls individual channel scrolling. Navigation buttons adjust the currently visible fader bank on the FaderPort by one bank of eight or sixteen channels (model dependent).
2. **Master.** Encoder controls the Master level. Push the Encoder to reset the Master level to 0 dB. While in this mode, the navigation buttons will control banking.
3. **Zoom.** Encoder controls horizontal zooming. Navigation buttons control vertical zooming. Press the encoder to undo zooming in both directions.
4. **Click.** Turns the metronome on/off. The metronome can be engaged or disengaged while any mode is active.
5. **Scroll.** Encoder controls timeline scrolling. Push the encoder to fit the timeline to the window size. Use the navigation buttons to scroll through the track list.
6. **Section.** Encoder nudges the selected event. Use the navigation buttons to navigate through the events on the Arranger track.



Power User Tip: Enable Snap to Grid for coarse nudging. Disable it for fine tuning. By default, this button is controlled by the User 2 function on the FaderPort. See Section 2.4.1 for details.

7. **Bank.** Encoder scrolls through the track list. Navigation buttons scroll through channels in banks of sixteen or eight (model dependent). Push the encoder to scroll the selected channel into view on the FaderPort.
8. **Marker.** Encoder moves the playback cursor in the Timeline. Use the navigation buttons to scroll through markers. Press Encoder to drop a marker.

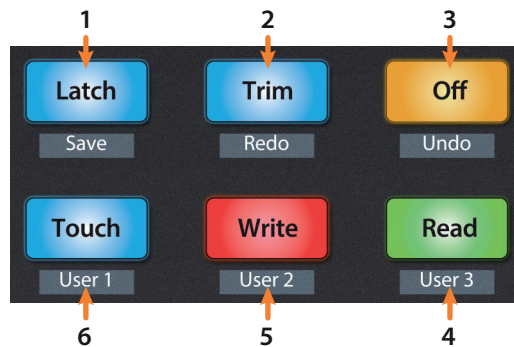
2.5.1 F1-F8 Functions

Using Shift plus any Session Navigator button will access alternate functions for your FaderPort. By default, these are assigned as follows:

- **F1.** Open Inspector
- **F2.** Open Editor
- **F3.** Open Mixer
- **F4.** Open Browser
- **F5.** Open Scratch Pad (Studio One Pro)
- **F6.** Open Tempo Track
- **F7.** Open Arranger Track (Studio One Pro)
- **F8.** Open Marker Track

Power User Tip: The default assignments for the Function buttons can be customized using the FaderPort device editor. *See Section 2.8.2 for more information.*

2.6 Automation Controls



1. **Latch / Save.** Engages Latch Automation on currently selected track or plug-in. Press the SHIFT and Latch buttons simultaneously to save your session.
2. **Trim / Redo.** At the time of publication, Trim Automation is not available in Studio One. Press the SHIFT and Trim buttons simultaneously to redo the last action.
3. **Off / Undo.** Turns Automation off on currently selected track or plug-in. Press the SHIFT and Off buttons simultaneously to undo the last action.
4. **Read / User 3.** Engages Read Automation on currently selected track or plug-in. Press the SHIFT and Read buttons simultaneously to engage the User 3 function. *See Section 2.5.1 for more information.*
5. **Write / User 2.** Engages Write Automation on currently selected track or plug-in. Press the SHIFT and Write buttons simultaneously to engage the User 2 function. *See Section 2.5.1 for more information.*
6. **Touch / User 1.** Engages Touch Automation on currently selected track or plug-in. Press the SHIFT and Touch buttons simultaneously to engage the User 1 function. *See Section 2.5.1 for more information.*

2.6.1 User Functions

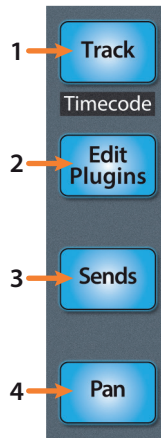
By default, the three User functions are set as follows:

- **User 1.** Show/Hide Automation
- **User 2.** Snap to Grid
- **User 3.** Autoscroll On/Off

User buttons can be reassigned from the Control Link window. *See Section 2.8.2.*

2.7 Fader Modes

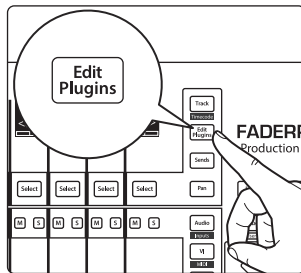
The faders on the FaderPort can be used to set levels, control plug-in parameters, set send levels, and panning for every track.



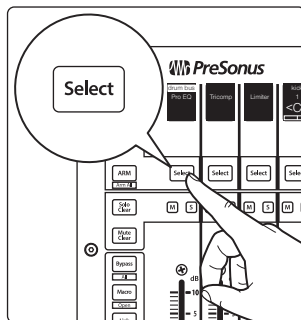
1. **Track.** When Track mode is active, the motorized faders will display and control channel levels. Pressing the Track button toggles metering on the scribble strip displays on and off. Press Shift and Track simultaneously to display Timecode on the scribble strips. While Timecode is active, the faders still control level.
2. **Edit Plug-ins.** When Edit Plug-ins mode is active, the motorized faders will control the parameter settings. The scribble strip will display the parameter each fader controls. *See Section 2.6.1 for more information.*
3. **Sends.** When Sends mode is active, the motorized faders will control the send levels for the selected channel. *See Section 2.6.2 for more information.*
4. **Pan.** When Pan mode is active, the motorized faders will display and control channel pan. When not active, the Pan/Param knob to the left of the scribble strips controls the panning for the currently selected channel. Pressing the Pan button also toggles metering on and off in the scribble strip displays. Pressing Shift with Pan will enable Input Gain Mode. *See Section 2.6.4 for more information.*

2.7.1 Edit Plug-ins

To control plug-ins in Studio One:



1. Press the Edit Plug-ins button to view the inserts for the selected channel.



2. Press the Select button under the scribble strip displaying the name of the plug-in you'd like to edit.

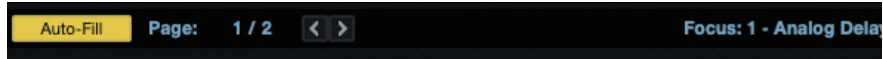
3. The faders and Select buttons will control the parameters displayed in the scribble strips.



Autofill Mode

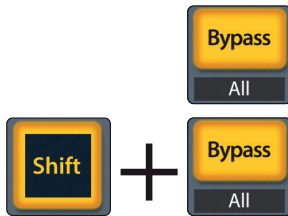


Your FaderPort offers an alternate mode for spilling plug-in parameters across the FaderPort faders and Select buttons. Autofill mode assigns every available parameter for the currently selected plug-in to a FaderPort control assignment across multiple fader banks, if required. To engage Autofill mode, press Shift + Edit Plug-ins on your FaderPort. This can also be toggled from the Control Link window in Studio One (*see Section 2.8.2*).



1. Use the Next and Prev buttons in the Session Navigator to page to additional parameters.
2. Press the Edit Plug-ins button again to return to the insert select view.

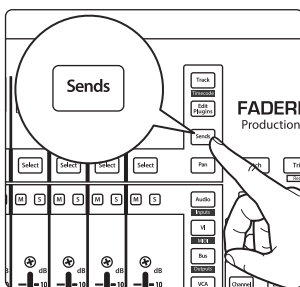
Bypass Options



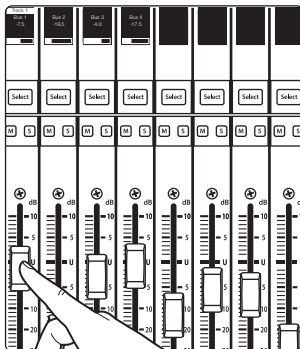
Press the bypass button to bypass every plug-in on the selected channel.

Press SHIFT + Bypass to disable every plug-in in the Session.

2.7.2 Sends Mode

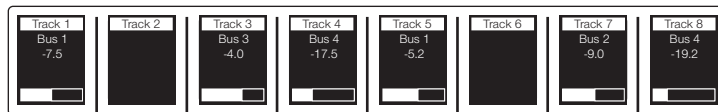


Your FaderPort provides two ways to view and control your bus and FX sends: individually and globally.

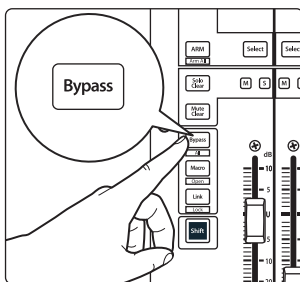


Press the Sends button once to control the send levels for all the sends on the currently selected channel.

Press the Sends button again to control the first insert bus send levels for all focused channels.



As you continue to press the Sends button, you can cycle through all available send slots until the last active slot has been reached. Once all the available sends have been cycled through, you will be returned to view the sends for the currently selected channel once more.



When Sends are in Focus, the Bypass button will bypass, or deactivate, the Send of the selected channels.

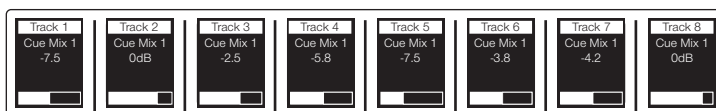
2.7.3 Cue Mix Sends Mode



Your FaderPort provides two ways to view and control your Cue Mix sends: individually and globally. Press the Shift and Sends buttons once simultaneously to control the send levels for all the sends on the currently selected channel.

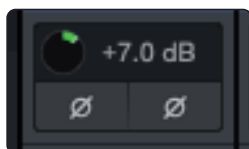


Press the Shift and Sends buttons again to control the first Cue Mix send levels for all focused channels.



As you continue to press the Shift and Sends buttons, you can cycle through all available Cue Mix send slots until the last active slot has been reached. Once all the available sends have been cycled through, you will be returned to view the sends for the currently selected channel once more.

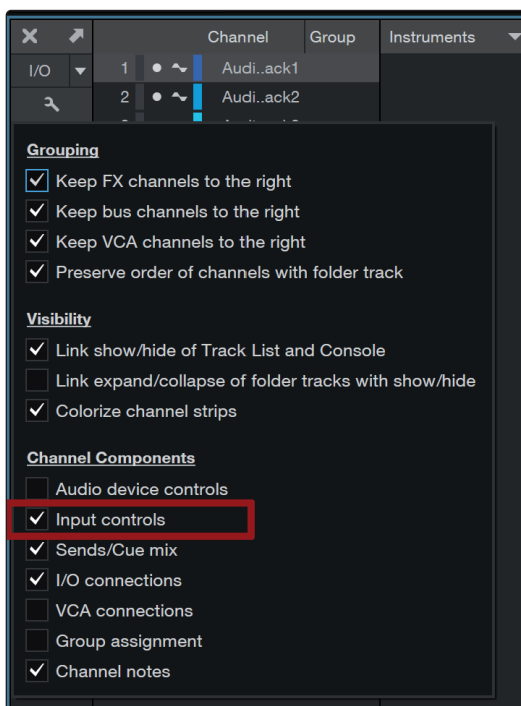
2.7.4 Input Gain Mode



Pressing the Shift and Pan buttons simultaneously will launch Input Gain Mode. From here, you can use the faders on your FaderPort to control Input Gain for each channel in your Studio One mix console.

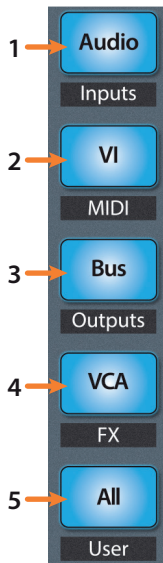
As you touch each fader, the current dB level will be displayed.

Note: To view the Input Gain controls in your Studio One console, you must enable Input Controls from the Utility menu.



2.8 Mix Management

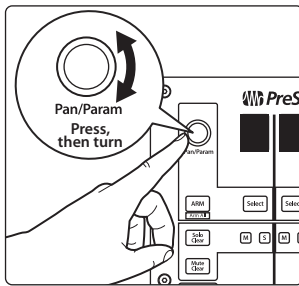
The Mix Management buttons allow you to filter what channel types you can view and control from your FaderPort as follows:



1. **Audio / Inputs.** Press to view Audio tracks only. Press Shift + Audio to view all Input channels.
2. **VI / MIDI.** Press to view Instrument tracks only. *Note: this view displays both MIDI and Virtual Instrument tracks.*
3. **Bus / Outputs.** Press to view buses only. Press Shift + Bus to view Output channels.
4. **VCA / FX.** Press to view VCAs. Press Shift + VCA to view all Effects channels.
5. **All / User.** Press to view all Studio One mixer Channels visible on the screen. Press Shift + All to view the User Remote Bank.

Power User Tip: If you're running Studio One 5.2 or later, your FaderPort's All filter will automatically sync with Channel visibility settings in Studio One's Channel List. This means it is not necessary to use Studio One's Remote Bank for channel visibility sync.

2.8.1 Metronome Control



When Output Channels are in Focus, Metronome Output can be toggled by pressing the Pan/Param encoder. Metronome volume can be adjusted by rotating the controller.

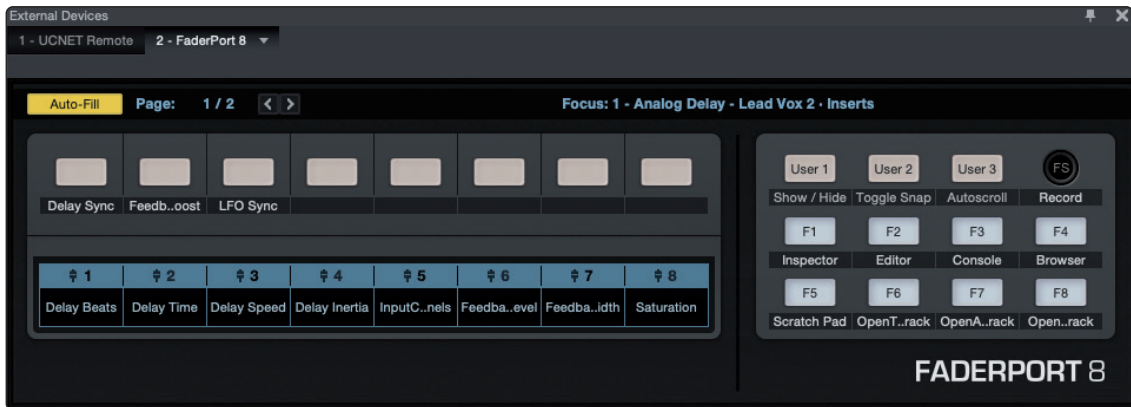
2.9 Advanced Studio One Controls

2.9.1 Link Mode

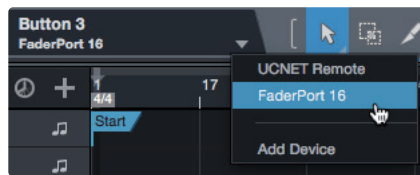


Link. When Link is enabled, the Pan / Param encoder will control any parameter beneath your mouse. To lock a parameter to this encoder, press SHIFT + Link.

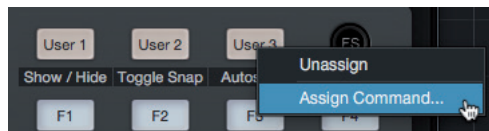
2.9.2 Control Link



Studio One provides a custom device editor for your FaderPort. The Control Link Editor allows you to create and edit custom parameter mappings. To edit the default parameter map, click on the pull-down menu in the Control Link display to launch the FaderPort editor window.



Right-click on any FaderPort control and select "Assign Command" to customize your FaderPort.



In Control Link mode, you can customize the parameters shown in the plug-in mode for each plug-in. This can also be done by dragging parameters to the FaderPort device editor from the top left of the toolbar or the plug-in editor.

More information about using Control Link can be found in the Studio One Reference Manual.

2.9.3 Macro Controls (Channel Editor)



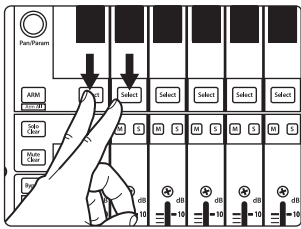
Macro. Press to display the Channel Editor macro controls for the Selected channel on your FaderPort (Studio One Pro only).



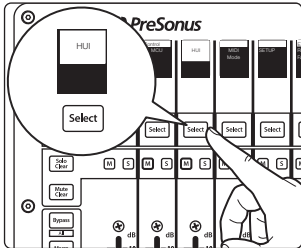
Power User Tip: The Channel Editor is a powerful feature in Studio One Pro that allows you to map multiple parameters to the same control, with independent range/polarity/curve controls. Additional XY vector pads can be assigned with individual parameters; and much more.

3 Pro Tools (HUI)

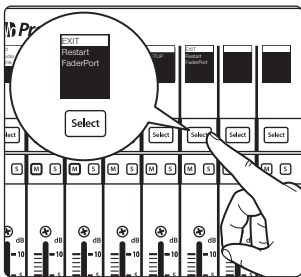
3.1 Getting Started



By default, the FaderPort is in Studio One operation mode. To switch to Pro Tools operation, power on the unit while pressing the first two select buttons.



This will open the boot mode screen, and you will be given the opportunity to select which mode of operation you'd like to use. When using the FaderPort with Pro Tools, select HUI by pressing the Select button below its scribble strip.

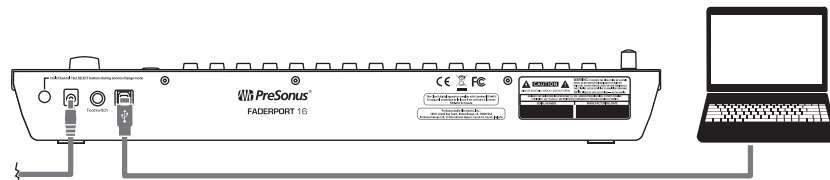


Once you have selected your mode, press the Select button below the "Exit" screen to reboot your FaderPort. This mode will be selected automatically every time you boot your FaderPort.

If you would like to change the mode at any point, power on the unit while holding down the first two Select buttons.

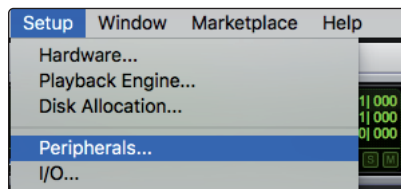
Power User Tip: From this menu, you can also adjust the fader sensitivity and speed to fine tune your FaderPort to work the way you want it. Please see Section 10 for more information on the customized setup modes.

The FaderPort is a class-compliant device in both macOS® and Windows®. Simply connect your FaderPort to a free USB port on your computer. No further installation is necessary.

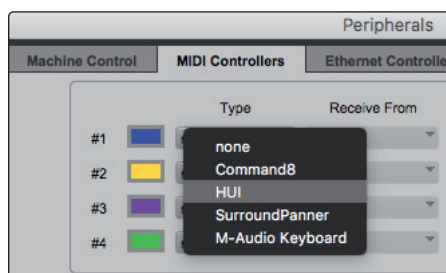


Once you have connected your FaderPort to your computer and the power supply, power it on and, launch Pro Tools to set up the FaderPort as a HUI device. The FaderPort 16 requires that you configure it as two HUI devices, while the FaderPort 8 only requires you to configure it as a single HUI device.

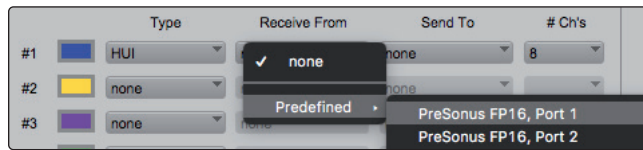
1. Go to Setups | Peripherals.



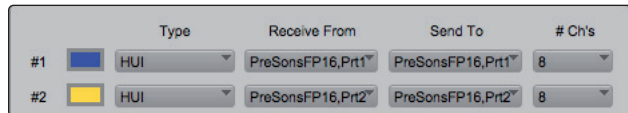
2. Create one HUI device under MIDI Controllers.



- Set the Receive From and Send To menus to "PreSonus FP16 Port 1" or "PreSonus FP8" (model dependent). Whether using the FaderPort 16 or FaderPort 8, the #Ch's should be set to 8.



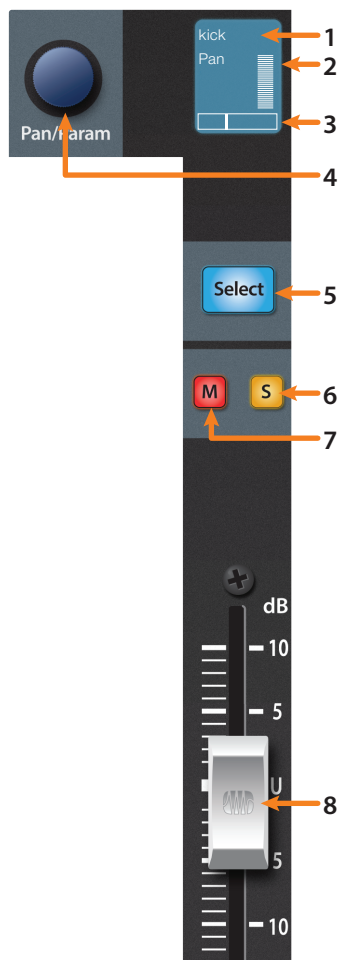
- FaderPort 16 ONLY:** Create a second HUI device and set the Receive From and Send To menus to "PreSonus FP16 Port 2" and "#Ch's" to 8.



- Click "OK."

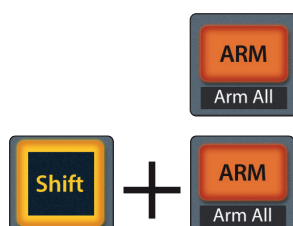
Your FaderPort is now ready to use. Enjoy!

3.2 Channel Strip



- Channel Name.** Displays the Channel name. When the fader is being adjusted, the fader value will also be displayed. This can be toggled on or off with the Macro button.
- Metering.** Displays the channel metering. This can be turned on or off by pressing SHIFT plus the push button encoder in the Session Navigator.
- Pan Position.** Displays the Channel's current pan position.
- Pan/Param.** The push-button encoder controls the pan of the currently selected channel while in Track mode. For stereo channels, this will default to the left pan control. Push the encoder to access the right pan control.
- Select Button.** This button selects the corresponding channel in Pro Tools. While selected, several editing functions are available. *See Section 3.2.1.*
- Mute.** Mutes the corresponding channel's output signal.
- Solo.** Isolates the corresponding channel's output signal in the mix.
- Touch-Sensitive Fader.** This 100 mm motorized fader can be used to control volume levels, aux send levels, panning, or plug-in parameters, depending on mode. *See Section 3.6 for more information.*

3.2.1 Select Button Modifiers



Arm. Pressing the Arm button will allow you to arm track for recording by pressing the corresponding track's Select button.

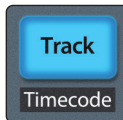
Arm All. Press Shift + Arm to arm all tracks for recording. Press again to disarm all tracks.



Solo and Mute Clear. These buttons will clear all solos or mutes in the currently focused bank of channels.

3.2.2 Select Button Editing Functions

Selecting a track will provide several powerful editing functions. Each function is dependent on the currently active Fader Mode.



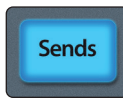
Track Mode

- **Pan.** While Track mode is active, the Pan/Parameter encoder will control the pan position for that track. As previously mentioned, for stereo channels, this encoder will default to control the left pan. To access the right pan, push the encoder.



Edit Plug-ins

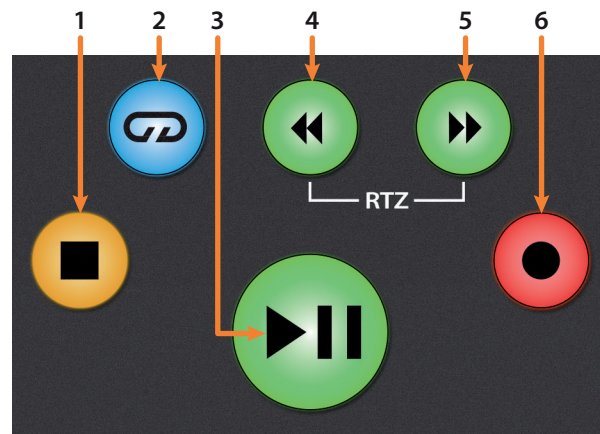
- **Inserts.** When Edit Plug-ins mode is active, the inserted plug-ins for the Selected channel will be displayed. *See Section 3.6.1 for more information.*



Sends

- **Sends.** When Sends mode is active, the send slots A-E for every channel will be displayed. *See Section 3.6.2 for more information.*

3.3 Transport Controls



1. **Stop.** Stops playback.
2. **Loop.** Engages / disengages Looping.
3. **Play / Pause.** Starts playback at the current playback-cursor position.
4. **Rewind.** Press once to regress playback by bar, second, frame, or base sample rate depending on mode. Press and hold to regress in finer increments. Press the Rewind and Fast Forward buttons simultaneously to Return to Zero.
5. **Fast Forward.** Press once to advance playback by bar, second, frame, or base sample rate depending on mode. Press and hold to advance in finer increments.
6. **Record.** Press to enable record ready. Press with Play to start recording at the current playback-cursor position for record-enabled tracks.

3.4 The Session Navigator

The Session Navigator provides quick navigation and session controls. Each button alters the functions of the push-button encoder and the Next and Prev buttons on either side.



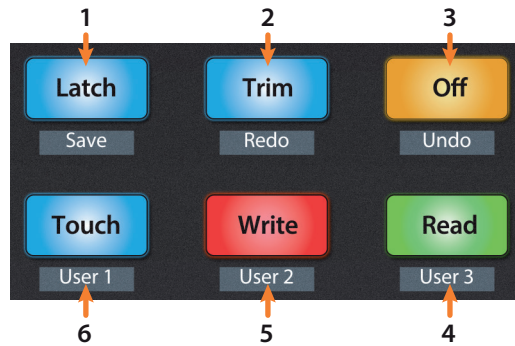
1. **Channel.** Encoder and navigation buttons adjust the currently visible fader bank on the FaderPort by one channel.
2. **Master.** This function is not available in HUI mode.
3. **Zoom.** Encoder and navigation buttons control horizontal zooming.
4. **Click.** Turns the metronome on and off. **Note:** *This only functions if a click track has been created for the Pro Tools session.*
5. **Scroll.** Press once to enable audio scrubbing. Press twice to enable faster audio scrubbing. Press Stop or any other Session Navigator button to disengage scrub.
6. **Section.** This function is not available in HUI mode.
7. **Bank.** Encoder and navigation buttons scroll through channels in banks of sixteen or eight (model dependent).
8. **Marker.** Encoder and navigation buttons scroll through markers 1-9. Press Encoder to drop a marker. Press Shift and Marker to cycle through the tools.

3.4.1 F1-F8 Functions

Pressing the right Shift button with any of the Session Navigator buttons will access the following functions:

- **F1.** Write enable volume.
- **F2.** Write enable mute.
- **F3.** Write enable pan and send pan.
- **F4.** Write enable send volume.
- **F5.** Write enable plug-in.
- **F6.** Write enable send mute.
- **F7.** Toggle Fader Fixed or Velocity while in Edit Plug-in Mode.
- **F8.** Cycle through tools.

3.5 Automation Controls

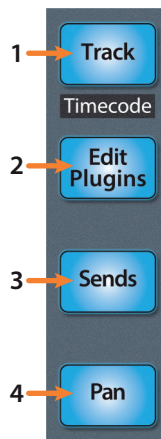


1. **Latch / Save.** Engages Latch Automation on currently selected track. Press the SHIFT and Latch buttons twice simultaneously to save your session.
2. **Trim / Redo.** Toggles Trim Automation mode on or off for Latch, Write, and Touch automation modes. At the time of publication, Redo is not a supported HUI function.
3. **Off / Undo.** Turns Automation off on currently selected track. Press the SHIFT and Off buttons simultaneously to undo the last action.
4. **Read / User 3.** Engages Read Automation on currently selected track.
5. **Write / User 2.** Engages Write Automation on currently selected track.
6. **Touch / User 1.** Engages Touch Automation on currently selected track.

Note: At the time of publication, the User functions are not available in Pro Tools.

3.6 Fader Modes

The faders on the FaderPort can be used to set levels, control plug-in parameters, set send levels, and panning for every track.



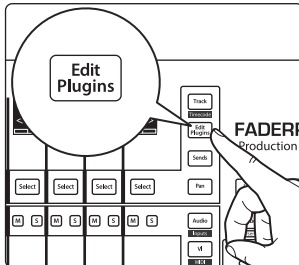
1. **Track.** When Track mode is active, the motorized faders will display and control channel levels. Press Shift and Track simultaneously to display Timecode on the scribble strips. *See Section 3.6.4 for more information.*
2. **Edit Plug-ins.** When Edit Plug-ins mode is active, the motorized faders will control the parameter settings. The scribble strip will display the parameter each fader controls. *See Section 3.6.1 for more information.*
3. **Sends.** When Sends mode is active, the motorized faders will control send levels. *See Section 3.6.2 for more information.*
4. **Pan.** When Pan mode is active, the motorized faders will display and control channel pan. When not active, the Pan/Param knob to the left of the scribble strips controls the panning for the currently selected channel. *See Section 3.6.3 for more information.*

3.6.1 Edit Plug-ins

While working in HUI mode in Pro Tools, engaging Edit Plug-ins will allow Faders and Select buttons 1-4 to control the parameters and switches of the focused plug-in. The scribble strip above each fader will display the parameter that the fader and Select button are controlling.

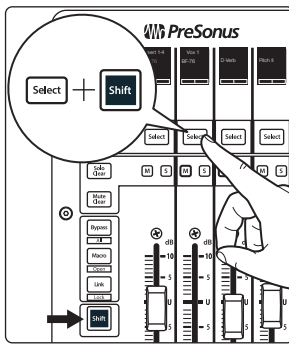
Note: As of Pro Tools 8.0.5, Avid no longer supports new development for the HUI protocol and has left HUI inside Pro Tools as a Legacy Protocol. Edit Plug-ins support will vary greatly from plug-in developer to developer and may not work in some cases.

1. Press the Edit Plug-ins button.

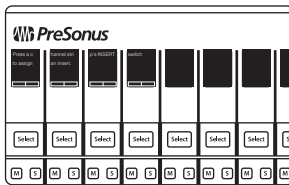


2. Press SHIFT with the Select button for the channel you'd like view.

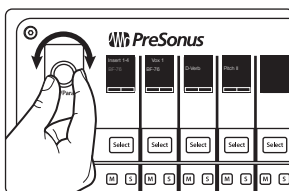
Note to FaderPort 16 Users: Due to the limitations of the HUI protocol, you can only access the plugins for the first 8 channels of a 16 channel bank. In order to access channels 9-16, for example, you will have to move the bank over by single channels to shift the banks to 9-16 and 17-24.



3. In Pro Tools, click on the plug-in you'd like to edit.



4. Use the Pan/Param encoder to encoder to toggle between displaying inserts 1-4 or insert 5.
5. Press select under the plug-in you'd like to edit. Press the Pan/Param knob to return to insert view. Use the Pan/Param knob to scroll through differing parameter pages when applicable.



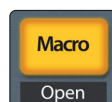
Power User Tip: Use the VCA button will show or hide the selected plugin in Pro Tools.

6. Using the faders and Select buttons to change parameter values and states.

Press the Bypass button to bypass the focused plugin.



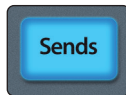
Press the Macro button to compare plug-in changes.



Press the Link button to change plug-ins. The Link button will flash, press the Select button under the plug-in you would like to change. Then use the Pan/Param knob to cycle through plug-ins. Press the Pan/Param knob to confirm the selection.



3.6.2 Sends Mode



Engaging Sends mode will allow Faders and Select buttons control channel sends within Pro Tools. The scribble strip above each fader will display the send that the fader and Select button are controlling. Press the mute button below the desired send to mute it.

1. Press "Sends" button to enter Sends mode. Sends slots A - E will be listed in the Scribble strips.
2. Press the Select button below the of the lettered Send slot you want to adjust and use the faders to adjust the send level of each channel.
3. Press the Sends button again to return to the send slot selection view.
4. Press the Select button below the Exit screen (Channel 8 or 16, depending on model) to return to Track mode.

3.6.3 Pan Mode



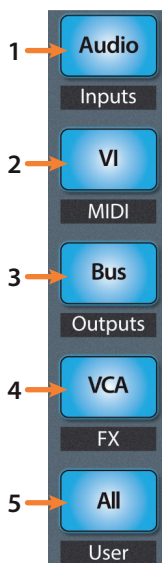
Pressing the Pan button will allow you to adjust pan for every track using the faders. For stereo channels, the left pan is active by default. To switch to the right pan control, press Pan/Param knob.

3.6.4 Timecode



Press the Shift and Track buttons simultaneously to view the Timecode on the scribble strips. This follows the Timecode type you have selected from within Pro Tools. While Timecode is active, the faders continue to control level.

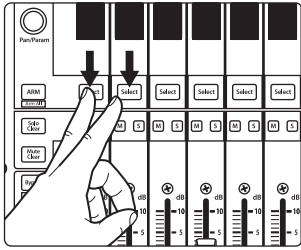
3.7 Session Management



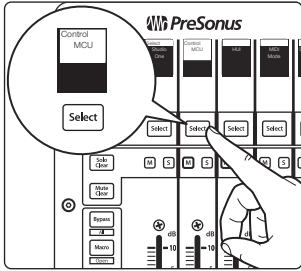
1. **Audio / Inputs.** Press to view Mixer window.
2. **VI / MIDI.** Press to view Arranger window.
3. **Bus / Outputs.** Press to view Transport window.
4. **VCA / FX.** Press to view the Plug-in window.
5. **All / User.** Press to view the Session Setup window.

4 Logic (MCU)

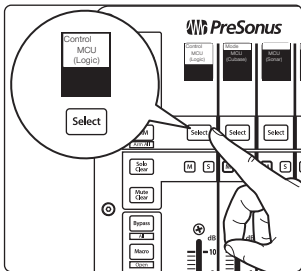
4.1 Getting Started



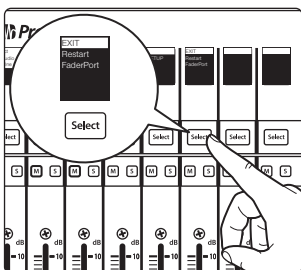
By default, the operation mode on the FaderPort is set Studio One. To switch to Logic operation, power on the unit while pressing the first two select buttons.



This will open the boot mode screen, and you will be given the opportunity to select which mode of operation you'd like to use. Press the Select button below MCU to view the customized MCU operation modes.



When using the FaderPort with Logic, select MCU (Logic) by pressing the Select button below its scribble strip.

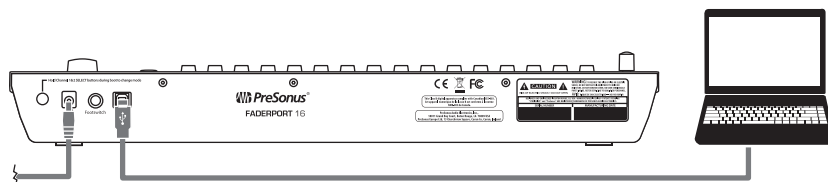


Once you have selected your mode, press the Select button below the "Exit" screen to reboot your FaderPort. This mode will be selected automatically every time you boot your FaderPort.

If you would like to change the mode at any point, power on the unit while holding down the first two Select buttons.

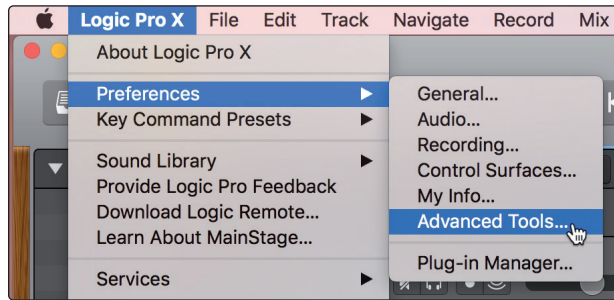
Power User Tip: From this menu, you can also adjust the fader sensitivity and speed to fine tune your FaderPort to work the way you want it. **Please see Section 10 for more information on the customized setup modes.**

The FaderPort is a class-compliant device in both macOS® and Windows®. Simply connect your FaderPort to a free USB port on your computer. No further installation is necessary.

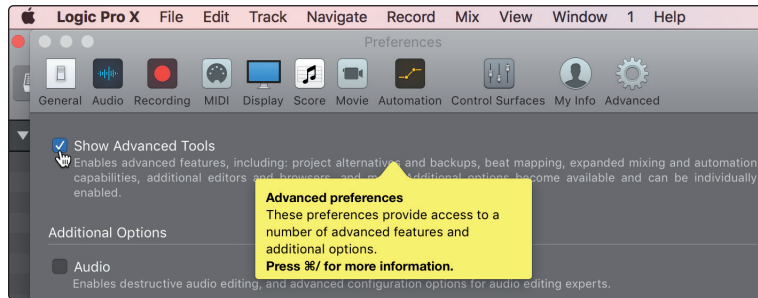


Once you have connected your FaderPort to your computer and the power supply, power it on and, launch Logic. The FaderPort 16 will auto-configure as two devices: a Mackie Control Universal and a Mackie Control Extender. The FaderPort 8 will auto-configure as a Mackie Control Universal device only. If for some reason this does not happen, you will need to enable it manually.

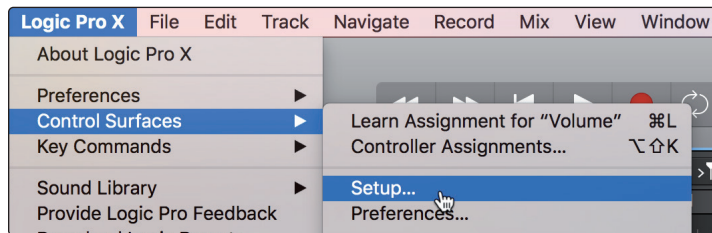
1. If you do not have Advanced preferences enabled, go to Logic Pro | Preferences | Advanced Tools...



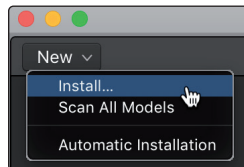
2. Enable "Show Advanced Tools."



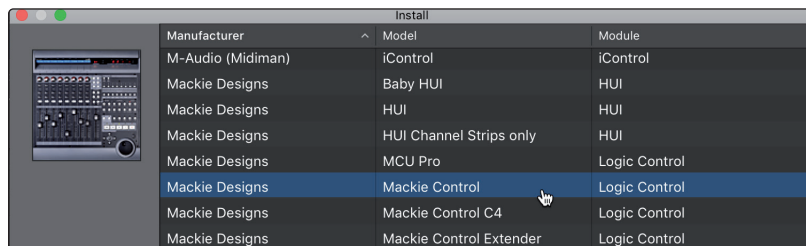
3. Go to Logic Pro | Control Surfaces | Setup...



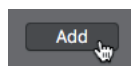
4. In the pop-up menu, go to New | Install...



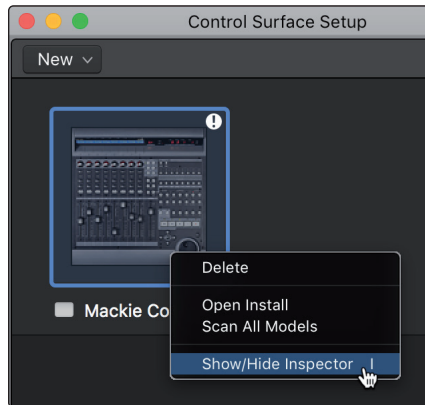
5. From the list of devices, select Mackie Control.



6. Click Add.



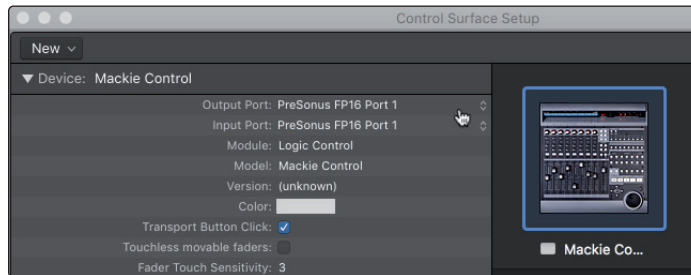
- Right-click on the Mackie Control in the Control Surface Setup and select Show/Hide Inspector.



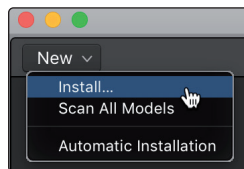
- In the Inspector, set the Input and Output ports to “PreSonus FP16 Port 1” or “PreSonus FP8” (model dependent).

FaderPort 8 Users: Your FaderPort 8 is now ready to use!

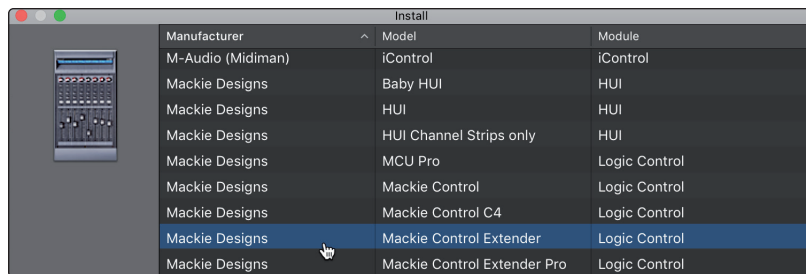
FaderPort 16 Users: Please continue through the remaining steps to complete set-up.



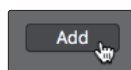
- In the pop-up menu, go to New | Install...



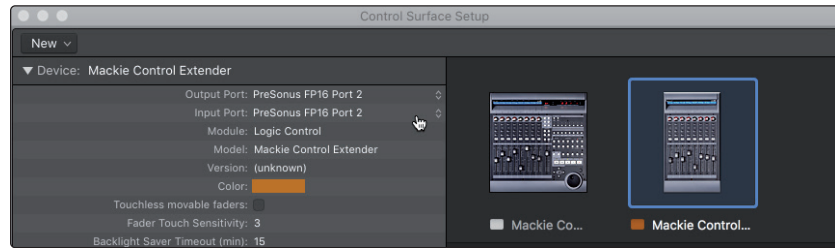
- From the list of devices, select Mackie Control Extender.



- Click Add.

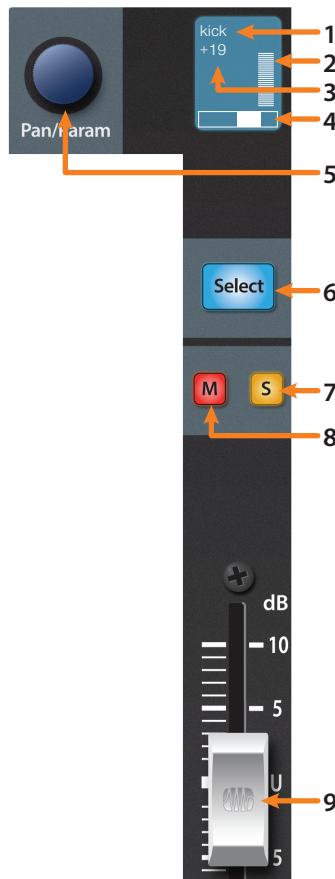


12. Select the Mackie Control Extender device and set the Input and Output ports to "PreSonus FP16 Port 2" in the Inspector.



Your FaderPort 16 is now ready to use. Enjoy!

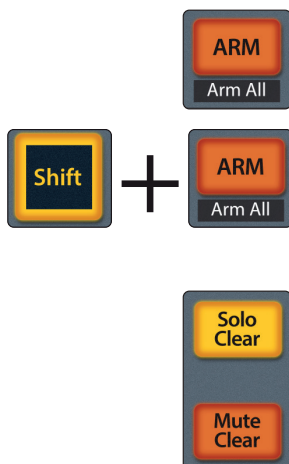
4.2 Channel Strip



1. **Channel Name.** Displays the Channel name.
2. **Metering.** Displays the channel metering. This can be turned on or off by pressing the right Shift button and the push button encoder in the Session Navigator simultaneously.
3. **Value.** Displays the Channel's current pan position value. While the fader is being adjusted, this value will display the current fader level.
4. **Pan Display.** Displays the Channel's current pan position.
5. **Pan/Param.** Controls panning for the currently selected channel.
6. **Select Button.** This button selects the corresponding channel in Logic. *See Section 4.2.1 for alternate functions and modes.*
7. **Solo.** Isolates the corresponding channel's output signal in the mix.
8. **Mute.** Mutes the corresponding channel's output signal.
9. **Touch-Sensitive Fader.** This 100 mm motorized fader can be used to control volume levels, aux send levels, panning, or plug-in parameters, depending on mode. *See Section 4.6 for more information.*

Power User Tip: You can quickly reset the level on any channel to 0 dB by pressing the left Shift button and the desired channel's Select button simultaneously.

4.2.1 Modifier Buttons



Arm. Pressing the Arm button will allow you to arm track for recording by pressing the corresponding track's Select button.

Arm All. Press Shift (right) + Arm to arm the currently focused bank of tracks for recording.

Power User Tip: The right Shift button can be momentary or latching. Press for latching, press and hold for 2 seconds for momentary.

Solo and Mute Clear. These buttons will clear all solos or mutes in the currently focused bank of channels.



Shift (Left). This button functions the same as the Shift button on an MCU and provides an alternate function for noted buttons.



Link. This button functions the same as the Control button on an MCU. While depressed, the group clutch is engaged and channel strip groups will be temporarily disabled.

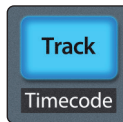


Macro. This button functions the same as the Option button on an MCU. Press it while adjusting any given parameter to automatically set it to the minimum (if decreasing) or maximum (if increasing) the value.



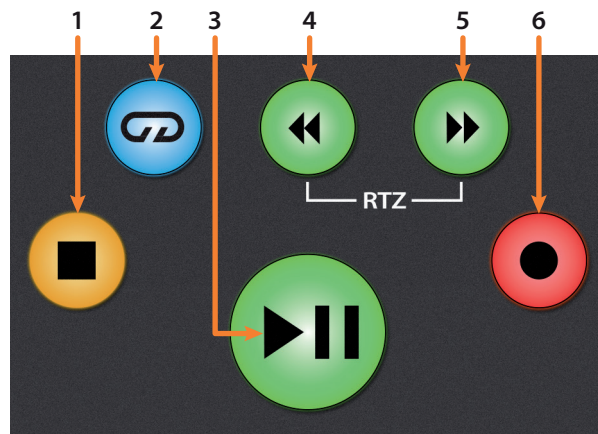
Bypass. This button function the same as the CMD/ALT button on an MCU. Press while adjusting a parameter to enable fine-tuning.

4.2.2 Panning



While Track Mode is active, the Pan/Parameter encoder will control the pan position for the currently selected track.

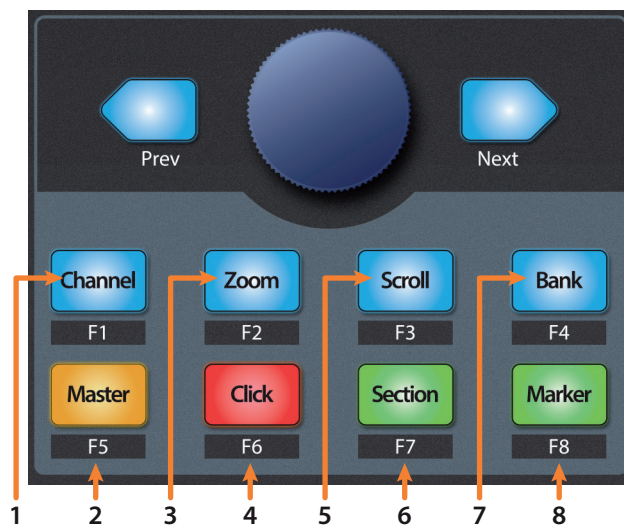
4.3 Transport Controls



1. **Stop.** Stops playback. Press a second time to return to the project start point, or the beginning of the nearest cycle area, if Cycle mode is active.
2. **Loop.** Engages / disengages cycle/loop playback.
Press and hold the Loop and Rewind button simultaneously to set the cycle start point at the current timeline position.
Press and hold the Loop and Fast Forward buttons simultaneously to set the cycle end point at the current timeline position.
3. **Play / Pause.** Starts playback at the current playback-cursor position. Press again to restart playback at the previous play position. Hold the Left Shift button and press Play to Pause playback.
4. **Rewind.** Press and hold to move the cursor backward through the timeline. Repeated pressing will accelerate speed.
5. **Fast Forward.** Press and hold to move the cursor forwards through the timeline. Repeated pressing will accelerate speed.
6. **Record.** Starts recording at the current playback-cursor position for record-enabled tracks.

4.4 The Session Navigator

The Session Navigator provides quick navigation and session controls. Each button alters the functions of the push-button encoder and the Next and Prev buttons on either side.



1. **Channel.** Encoder and navigation buttons control moves the current bank by one channel.
2. **Master.** Encoder controls the Master level.
3. **Zoom.** Navigation buttons control vertical zooming. Pressing and holding the Macro button with the Navigation buttons controls vertical zooming for the selected track only. Pressing and holding the Macro button while turning the encoder will reset the track height.
Pressing and holding the left Shift button in Zoom mode will allow you to use the encoder and navigation buttons as computer arrow key emulations as follows:
 - **Prev.** Up arrow.
 - **Next.** Down arrow.
 - **Turn encoder clockwise.** Right arrow.
 - **Turn encoder counter-clockwise.** Left arrow.
4. **Click.** Turns on the metronome. Press the left Shift button with the Click button to activate or deactivate both External Sync mode and transmission of MMC.
5. **Scroll.** Press once to advance the current playback position by one bar. Press a second time to engage scrubbing. While scrubbing is active, the Scroll button will blink.
Press and hold the Loop button in the Transport to use the Encoder to set a loop range starting from the current playback position.
6. **Section.** Encoder selects the next or previous region. Navigation and Rewind/Fast Forward buttons control region nudging.
7. **Bank.** Encoder and navigation buttons select the next or previous bank.
Pressing and holding the Macro button and turning the encoder clockwise will jump to the last bank of channels in your project. Turning the encoder counter-clockwise will jump to the first bank of channels in your project.
8. **Marker.** Encoder moves the playback position forward or backwards in the timeline. Navigation buttons move through markers. Press and hold the Marker button to engage Temporary Marker mode and use the scribble strips to make a selection. Press and hold the left Shift button with the Marker button to enable and latch Large Marker mode. *See Section 4.4.2 for details.*

4.4.1 F1-F8 Functions

Pressing the right Shift button with any of the Session Navigator buttons will access your first eight Screensets. These buttons can be reassigned using Logic's Key Commands Editor:

- **F1.** Screenset 1
- **F2.** Screenset 2
- **F3.** Screenset 3
- **F4.** Screenset 4
- **F5.** Screenset 5
- **F6.** Screenset 6
- **F7.** Screenset 7
- **F8.** Screenset 8

Latch the right Shift button by pressing for 2 seconds and releasing, then use the left Shift button to access these alternate functions:

- **F1 + Left Shift.** Open / Close Arrange Window
- **F2 + Left Shift.** Open / Close Mixer
- **F3 + Left Shift.** Open / Close Event List
- **F4 + Left Shift.** Open / Close Score Editor
- **F5 + Left Shift.** Open / Close Hyper Editor
- **F6 + Left Shift.** Open / Close Piano Roll Editor
- **F7 + Left Shift.** Open / Close Transport Window
- **F8 + Left Shift.** Open / Close Audio Bin

Latch the right Shift button by pressing for 2 seconds and releasing, then use the Bypass button to access these alternate functions:

- **F1 + Bypass.** Cut
- **F2 + Bypass.** Copy
- **F3 + Bypass.** Paste
- **F4 + Bypass.** Clear
- **F5 + Bypass.** Select All
- **F6 + Bypass.** Select All Following
- **F7 + Bypass.** Select Similar Regions/Events
- **F8 + Bypass.** Select Inside Locators

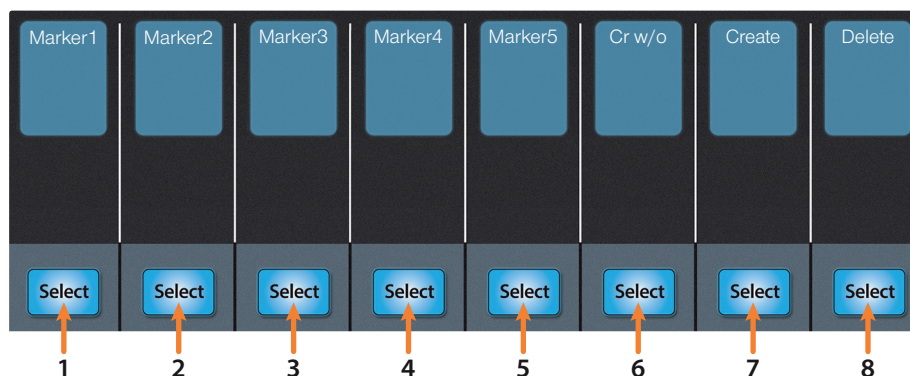
4.4.2 Large/Temporary Marker Mode



As previously mentioned, pressing and holding the Marker button will engage Temporary Marker mode in Logic. Pressing and releasing the Marker button will engage Large Marker mode.

Large Marker Mode

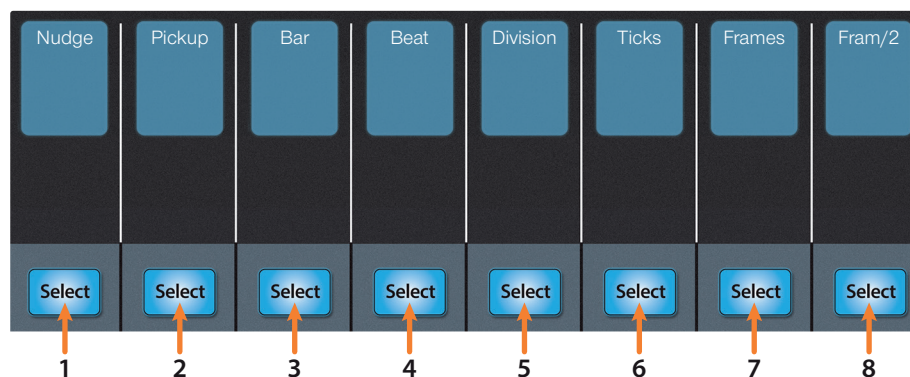
While in Large Marker Mode, the Select buttons will control the following functions:



1. **Select 1.** Marker 1
2. **Select 2.** Marker 2
3. **Select 3.** Marker 3
4. **Select 4.** Marker 4
5. **Select 5.** Marker 5
6. **Select 6.** Create new marker at current playback position
7. **Select 7.** Create new marker at nearest bar
8. **Select 8.** Delete nearest marker

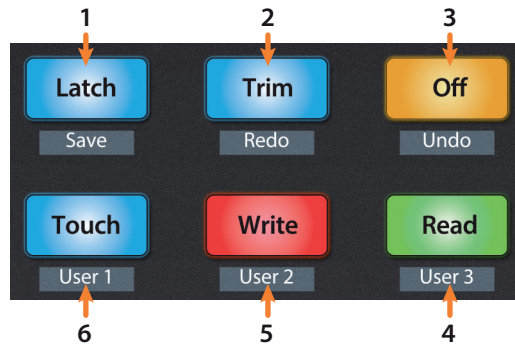
Temporary Marker Mode

While in Temporary Marker Mode, the Select buttons will control the following functions:



1. **Nudge.** Press the Select button below Nudge then use the Pan/Param knob to change setting.
2. **Pickup.** Press the Select button below Pickup to move the selected region to the current playhead position.
3. **Bar.** Press the Select button below Bar then use the Pan/Param knob to nudge the selected region by bars.
4. **Beat.** Press the Select button below Beat then use the Pan/Param knob to nudge the selected region by beat.
5. **Division.** Press the Select button below Divisn then use the Pan/Param knob to nudge the selected region by project division value.
6. **Ticks.** Press the Select button below Ticks then use the Pan/Param knob to nudge the selected region by single ticks.
7. **Frames.** Press the Select button below Frames then use the Pan/Param knob to nudge the selected region by one SMPTE frame.
8. **Fram/2.** Press the Select button below Fram/2 then use the Pan/Param knob to nudge the selected region by half a SMPTE frame.

4.5 Automation Controls

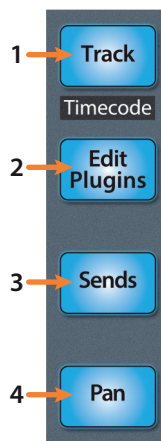


1. **Latch / Save.** Engages Latch Automation on currently selected track. Press the SHIFT and Latch buttons simultaneously to save your session. Press the Shift, Macro, and Latch buttons to open the Save As menu.
2. **Trim / Redo.** Toggles Trim when Latch or Touch modes are active. Press the SHIFT and Trim buttons simultaneously to redo the last action.
3. **Undo.** Press the SHIFT and Off buttons simultaneously to undo the last action. Press the Shift, Macro, and Off buttons to open the Undo History window in Logic.
4. **Read.** Engages Read Automation on currently selected track. Press again to turn automation off on currently selected track.
5. **Write.** Engages Write Automation on currently selected track. Press Shift and Write simultaneously to select Cancel in any contextual menu.
6. **Touch.** Engages Touch Automation on currently selected track/ Press Shift and touch simultaneously to select Enter in any contextual menu.

Power User Tip: To change the automation mode across all channels, press and hold the Macro button while engaging the desired automation mode.

4.6 Fader Modes

The faders on the FaderPort can be used to set levels, control plug-in parameters, set send levels, and panning for every channel.



1. **Track.** When Track mode is active, the motorized faders will display and control channel levels. Press Shift and Track simultaneously to display Timecode on the scribble strips. *See Section 4.6.2 for more information.*
2. **Edit Plug-ins.** When Edit Plug-ins mode is active, the motorized faders will control plug-in parameter settings. The scribble strip will display the parameter each fader controls. *See Section 4.6.1 for more information.*
3. **Sends.** When Sends mode is active, the motorized faders will control send parameters. *See Section 4.6.3 for more information.*
4. **Pan.** When Pan mode is active, the motorized faders will display and control channel pan. When not active, the Pan/Param knob to the left of the scribble strips controls the panning for the currently selected channel.

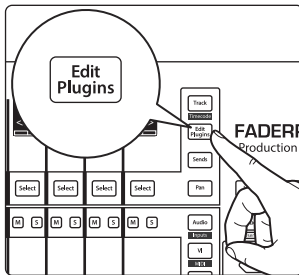
Press the left Shift button with the Pan button to activate Swap mode. While Swap mode is active, the volume for the selected track will be controlled by the Pan/Param knob and Panning will be controlled by the fader.

Press and hold the Link button with Pan to activate Zero mode. In this mode, all faders will set to infinity and **will not move**. This is useful in situations when the FaderPort is located close to microphones and you don't want to capture the mechanical noise of the faders moving.

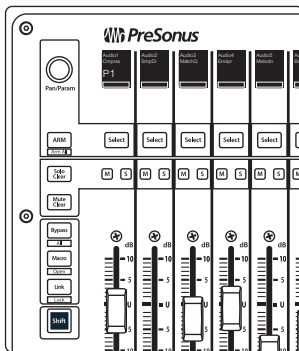
4.6.1 Edit Plug-ins

The FaderPort provides two different modes to control plug-ins within Logic: Plug-in Mixer and Plug-in Channel Views.

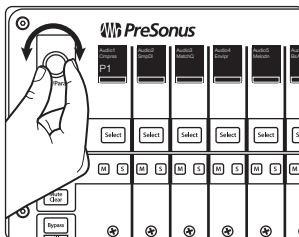
To engage Plug-in Mixer View:



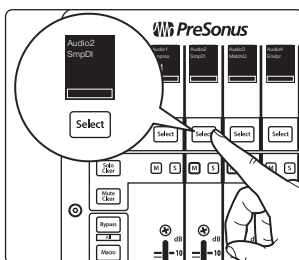
1. Press Edit Plugins once. P1 will be displayed on Screen 1.



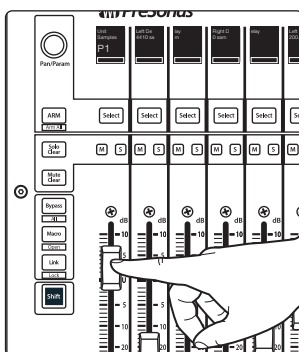
This will display the first Insert Slot for every channel in your Logic session.



2. Use the Pan/Param encoder to scroll through the available slots. The slot position will be displayed in the lower left-hand corner of the first scribble strip display up to 14 slots. Pressing the Pan/Param knob changes its function to Arrow Left (CCW) and Arrow Right (CW).

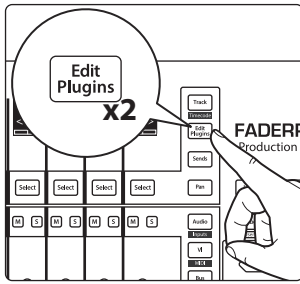


3. Press the Select button below the plug-in you'd like to edit.

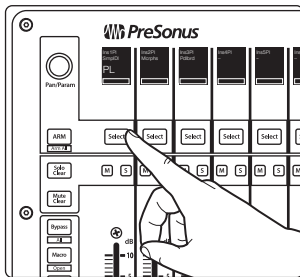


4. This displays the plug-in parameters on the scribble strips and allows you to control each parameter with the corresponding fader. Use the Pan/Param encoder to scroll through other plug-ins on the same channel. Pan/Param knob advances to the next (CW) or previous (CCW) page of parameters when P1 is highlighted (default) in screen 1. Press the Pan/Param knob to select the next (CW) or previous (CCW) plugin slot for the selected channel.

To engage Plug-in Channel View mode:



1. Press Edit Plugins twice. "PL" will be displayed in Screen 1. This will display every insert slot for the currently selected channel in the scribble strips.



2. Press the Select button below any of the insert slots to edit that plug-in's parameters. Use the Navigation buttons to access additional parameters.

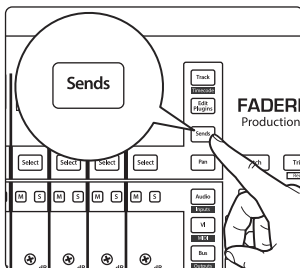
Power User Tip: While in Edit Plugin mode, you can press and hold the left Shift button, then press the Mute button for the corresponding plugin slot to bypass a plugin.

4.6.2 Timecode



Press the Shift and Track buttons simultaneously to view the Timecode on the scribble strips. The default display is Bars and Beats. Press and hold the right Shift button, then press the All button to toggle between Bars and Beats and Time. While Timecode is active, the faders will continue to control level.

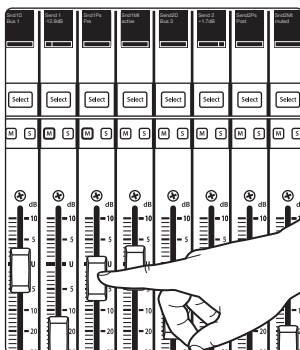
4.6.3 Sends



Press the Sends button to toggle between Send Mixer View, which allows you to edit one send parameter for all channel strips: Destination, Level, Position, or Mute, and Send Channel View which allows you to edit send parameters for the selected channel strip.

In Send Mixer View, you can select what is displayed by pressing the Pan/Param encoder. S1 will highlight and you can choose to display Send Destination, Send Level, Send Pre/Post, or Send Mute status. Press the Pan/Param encoder again to return to normal Send Mixer View. For most applications, you will want to select Send Level.

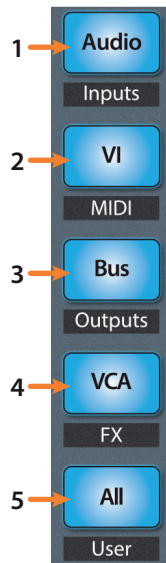
While in Send Mixer View, pressing a channel's mute button will mute that corresponding channel send.



In this Send Channel View, the following four parameters are available for all send slots. Additional Send slots may be accessed by first pressing the Pan/Param encoder which will highlight SE in the first screen. When SE is highlighted, you can then turn the Pan/Param knob to access additional slots.

- **Send Destination.** Displays the current destination.
- **Send Level.** Use the Fader to control the Send level.
- **Send Pre/Post selection.** Use the Fader to switch between pre- and post-fader send positions.
- **Send Active/Mute.** Use the Fader to mute / unmute the send.

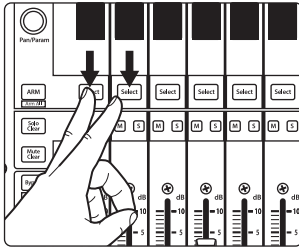
4.7 Mix Management



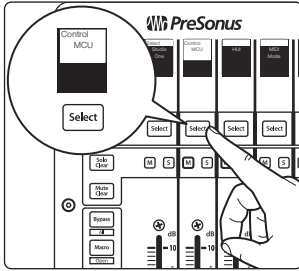
1. **Audio / Inputs.** Press to view Audio tracks only. Press Shift + Audio to view all Input channels.
2. **VI / MIDI.** Press to view Instrument tracks only. Press Shift + VI to view MIDI tracks.
3. **Bus / Outputs.** Press to view busses only. Press Shift + Bus to view Output channels.
4. **VCA / FX.** Displays Aux channels.
5. **All / User.** Press to view all channels. User view is not available in Logic.

5 Cubase / Nuendo (MCU)

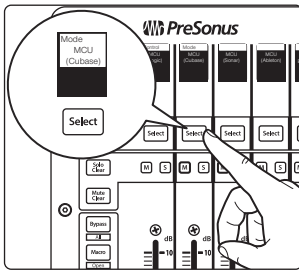
5.1 Getting Started



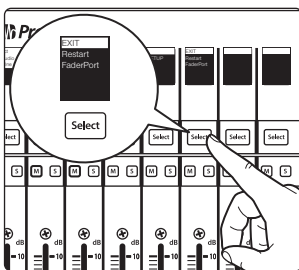
The default Operation Mode for the FaderPort is Studio One. To switch to Cubase operation, power on the unit while pressing the first two select buttons.



This will open the boot mode screen, and you will be given the opportunity to select which mode of operation you'd like to use. Press the Select button below MCU to view the customized MCU operation modes.



When using the FaderPort with Cubase, select MCU (Cubase) by pressing the Select button below its scribble strip.

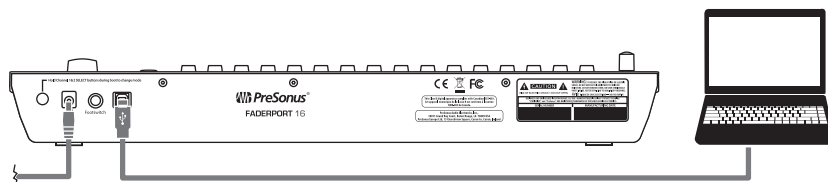


Once you have selected your mode, press the Select button below the "Exit" screen to reboot your FaderPort. This mode will be selected automatically every time you boot your FaderPort.

If you would like to change the mode at any point, power on the unit while holding down the first two Select buttons.

Power User Tip: From this menu, you can also adjust the fader sensitivity and speed to fine tune your FaderPort to work the way you want it. Please see Section 10 for more information on the customized setup modes.

The FaderPort is a class-compliant device in both macOS® and Windows®. Simply connect your FaderPort to a free USB port on your computer. No further installation is necessary.

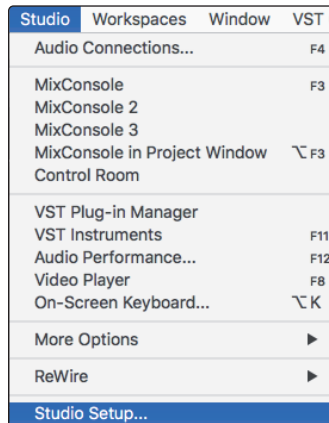


Once you have connected your FaderPort to your computer and the power supply, power it on and, launch Cubase or Nuendo to set up the FaderPort as a Mackie Control Universal device.

FaderPort 16 Users: Because Mackie Control Universal is an 8-channel protocol, you will need to create two Mackie Control devices: one for the right bank and one for the left bank.

The FaderPort 16 presents two MIDI ports when connected to a computer. While in MCU (Cubase) mode, MIDI Port 1 controls the left bank of eight faders. MIDI Port 2 controls the right bank of eight faders as well as the buttons.

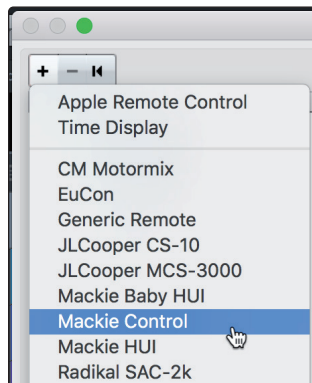
1. Go to Studio | Studio Setup.



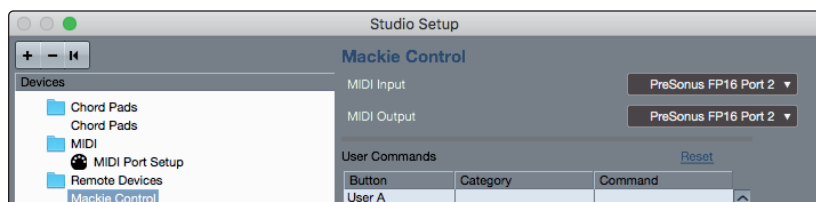
2. In the Setup window, click the "Add/Remove" menu to add the first Mackie Control device.



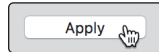
3. Select "Mackie Control" from the pull-down menu.



4. Set the MIDI Input and Output to "PreSonus FP16 Port 2" or "PreSonus FP8" (model dependent).



- Click "Apply."



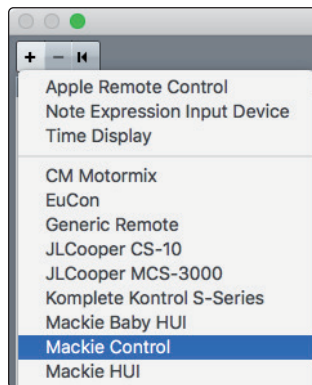
FaderPort 8 Users: Please skip to Step 10.

FaderPort 16 Users: Please continue through the remaining steps to complete set-up.

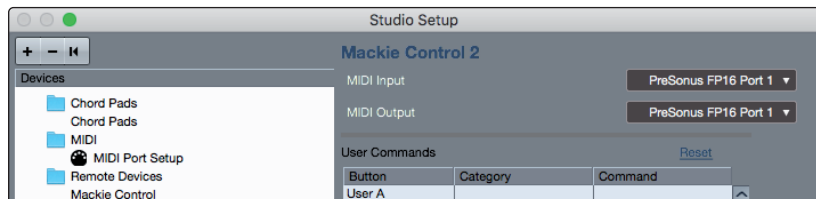
- In the Setup window, click the "Add/Remove" menu to add the second Mackie Control device.



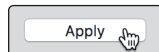
- Select "Mackie Control" from the pull-down menu.



- Set the MIDI Input and Output for Mackie Control 2 to "PreSonus FP16 Port 1."

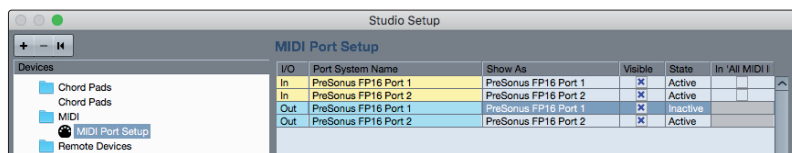


- Click "Apply."

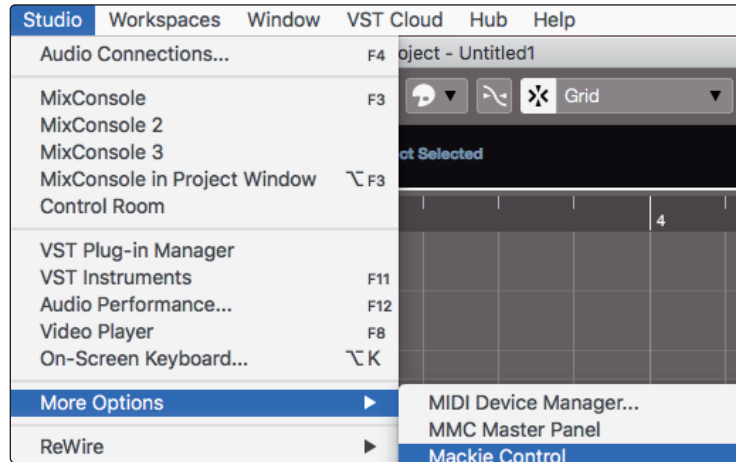


Note: The Port order is critical to proper functionality. The first Mackie Control device must be set to Port 2 and the second Mackie Control device must be set to Port 1.

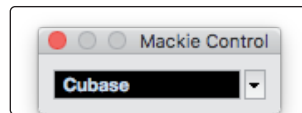
- Select MIDI Port Setup and make sure that "In All MIDI" box is unchecked for both FaderPort 16 ports or the FaderPort 8 port and then click "OK."



Whether you're using the FaderPort 16 or the FaderPort 8, you will need to switch the Mackie Control device(s) to Compatibility mode. To do this, select both the Mackie Control and the Mackie Control 2 (FaderPort 16 only) from the Studio | More Options menu.

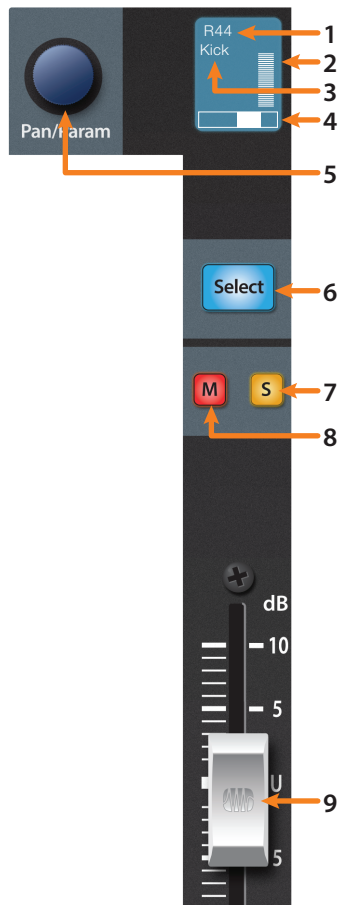


From the pop-up windows, select Cubase from the menu.



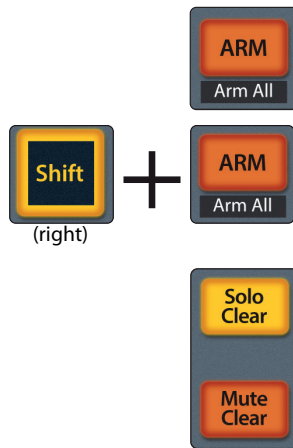
Your FaderPort is now ready to use. Enjoy!

5.2 Channel Strip



1. **Pan Value.** Displays Pan Value while panning is actively being adjusted.
2. **Metering.** Displays the channel metering. This can be turned on or off by pressing SHIFT plus the push button encoder in the Session Navigator.
3. **Channel Name.** Displays the Channel name.
4. **Pan Display.** Displays the Channel's current pan position.
5. **Pan/Param.** Controls panning for the currently selected channel.
6. **Select Button.** This button selects the corresponding channel in Cubase. *See Section 5.2.1 for alternate functions and modes.*
7. **Solo.** Isolates the corresponding channel's output signal in the mix.
8. **Mute.** Mutes the corresponding channel's output signal.
9. **Touch-Sensitive Fader.** This 100 mm motorized fader can be used to control volume levels, aux send levels, panning, or plug-in parameters, depending on mode. *See Section 5.6 for more information.*

5.2.1 Select Button Modifiers



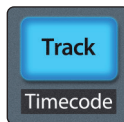
Arm. Pressing the Arm button will allow you to arm track for recording by pressing the corresponding track's Select button.

Arm All. Press right Shift + Arm to arm the currently focused bank of tracks for recording.

Solo and Mute Clear. These buttons will clear all solos or mutes in the currently focused bank of channels.

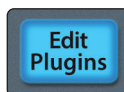
5.2.2 Select Button Editing Functions

Selecting a track will provide several powerful editing functions. Each function is dependent on the which Fader Mode is active.



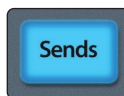
Track Mode

- **Pan.** While Track Mode is active, the Pan/Parameter encoder will control the pan position for that track.



Edit Plug-ins

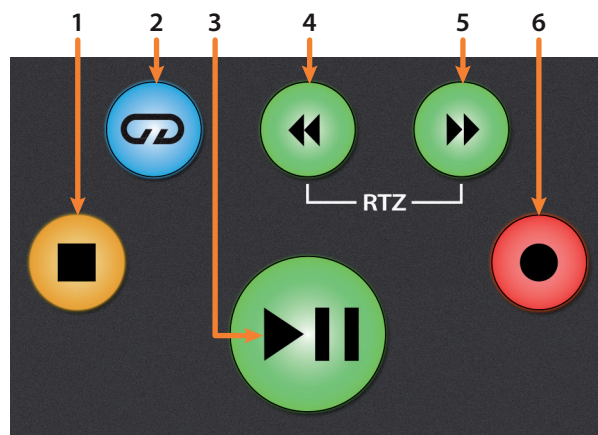
- **Inserts.** When Edit Plug-ins mode is active, the inserted plug-ins for the Selected channel will be displayed. *See Section 5.6.1 for more information.*



Sends

- **Sends.** When Sends mode is active, the aux sends for the Selected channel will be displayed. With Sends mode activated, the Bypass button will disable the Sends of the channel currently in Focus.

5.3 Transport Controls



1. **Stop.** Stops playback. Press twice to return to the initial playback position.
2. **Loop.** Engages / disengages Looping.
3. **Play / Pause.** Starts playback at the current playback-cursor position. Pause is not available in Cubase.
4. **Rewind.** Press and hold to move the cursor backward through the timeline. Press the Rewind and Fast Forward buttons simultaneously to Return to Zero.
5. **Fast Forward.** Press and hold to move the cursor forwards through the timeline.
6. **Record.** Starts recording at the current playback-cursor position for record-enabled tracks.

5.4 The Session Navigator

The Session Navigator provides quick controls that you need to navigate your session and your workflow. Each button alters the functions of the push-button encoder and the Next and Prev buttons on either side. Pressing Shift with any of these buttons will allow you to access the F1-F8 Functions.



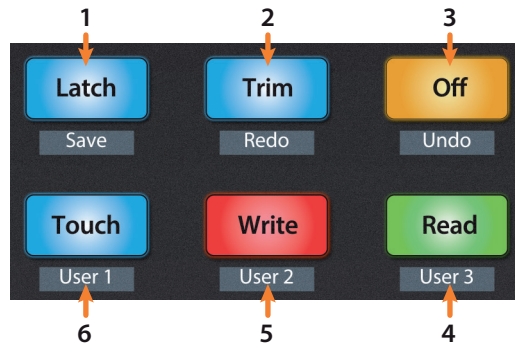
1. **Channel.** Encoder scrolls and selects individual channels. Navigation buttons adjust the current bank by one channel.
2. **Master.** The Encoder controls the Master bus level. Navigation buttons switch between the left / right panning and front / rear panning.
3. **Zoom.** Encoder controls horizontal zooming. Navigation buttons control vertical zooming.
Power User Tip: Zoom works for whichever window is currently is in focus, not just the arranger window.
4. **Click.** At the time of publication, this function is not available.
5. **Scroll.** Encoder controls Timeline scrolling by 1/16 note increments. Use the Navigation buttons for faster scrolling.
6. **Section.** Enables scrubbing control with the encoder and navigation buttons.
7. **Bank.** Encoder and navigation buttons scroll through channels in banks of sixteen or eight (model dependent).
8. **Marker.** Encoder and navigation buttons scroll through markers. Press the Encoder to drop a marker.

5.4.1 F1-F8 Functions

Pressing Shift with any of the Session Navigator buttons will allow you to switch between the first eight Channel Visibility configurations:

- **F1.** Channel Visibility Configuration 1
- **F2.** Channel Visibility Configuration 2
- **F3.** Channel Visibility Configuration 3
- **F4.** Channel Visibility Configuration 4
- **F5.** Channel Visibility Configuration 5
- **F6.** Channel Visibility Configuration 6
- **F7.** Channel Visibility Configuration 7
- **F8.** Channel Visibility Configuration 8

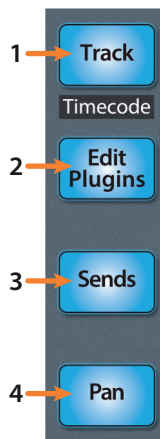
5.5 Automation Controls



1. **Latch / Save.** Press to save session, with or without SHIFT enabled.
2. **Trim / Redo.** Press to redo last action, with or without SHIFT enabled.
3. **Off / Undo.** Press to undo last action, with or without SHIFT engaged.
4. **Read.** Engages Read Automation on currently selected track. Press again to turn automation off on currently selected track.
5. **Write.** Engages Write Automation on currently selected track. Press again to engage Read Automation.
6. **Touch.** Brings Arrangement to front when Mixer window is active.

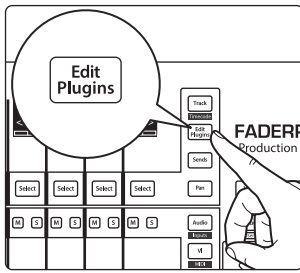
5.6 Fader Modes

The faders on the FaderPort can be used to set levels, control plug-in parameters, set send levels, and panning.



1. **Track.** When Track mode is active, the motorized faders will display and control channel levels. Press Shift and Track simultaneously to display Timecode on the scribble strips.
Note: At the time of publication, timecode display is not available in Cubase.
2. **Edit Plug-ins.** When Edit Plug-ins mode is active, the motorized faders will allow you to select plug-in inserts and bypass insert slots. The scribble strip will display the parameter each fader controls. *See Section 5.6.1 for more information.*
3. **Sends.** When Sends mode is active, the motorized faders will control the send levels for the currently selected channel.
4. **Pan.** When Pan mode is active, the motorized faders will display and control channel pan. When not active, the Pan/Param knob to the left of the scribble strips controls the panning for the currently selected channel.

5.6.1 Edit Plug-ins



Pressing Edit Plugins will allow you to view and edit the insert slots for the currently selected channel. While active:

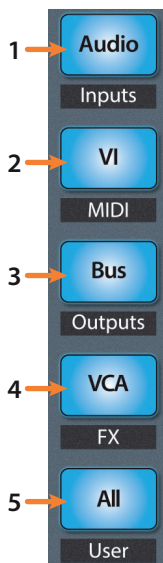
- **Fader 1 (FaderPort 8) / Fader 9 (FaderPort 16).** Selects Insert Slot.
- **Fader 2 (FaderPort 8) / Fader 10 (FaderPort 16).** Turns selected Insert on / off.
- **Fader 3 (FaderPort 8) / Fader 11 (FaderPort 16).** Scrolls through available plug-ins.

Power User Tip: For the best experience, instantiate the plug-in you wish to edit before engaging Edit Plug-ins mode.

Press Edit Plugins twice to access the EQ section of the built-in channel strip.

Press Edit Plugins a third time to access the Dynamics section of the built-in channel strip.

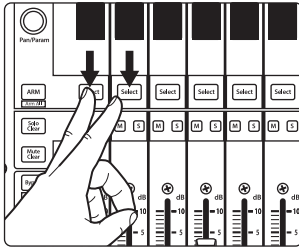
5.7 Mix Management



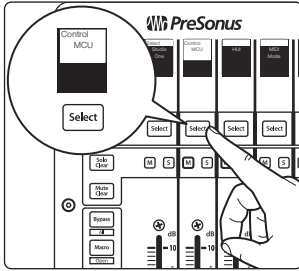
1. **Audio / Inputs.** This displays the Master Channel Inserts and functions the same as the Edit Plugins. *See Section 5.6.1 for details.*
2. **VI / MIDI.** At the time of publication, this button has no functionality in Cubase.
3. **Bus / Outputs.** Press to show the FX Bus inserts.
4. **VCA / FX.** Press to open/close the Mixer window in Cubase.
5. **All / User.** Press to open/close the Edit Channel Settings window in Cubase.

6 Sonar (MCU)

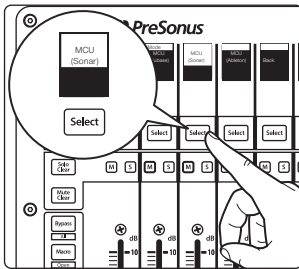
6.1 Getting Started



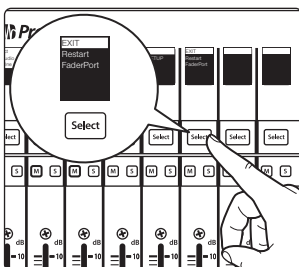
The default operation mode for the FaderPort is Studio One. To switch to Sonar operation, power on the unit while pressing the first two select buttons.



This will open the boot mode screen, and you will be given the opportunity to select which mode of operation you'd like to use. Press the Select button below MCU to view the customized MCU operation modes.



When using the FaderPort with Sonar, select MCU (Sonar) by pressing the Select button below its scribble strip.

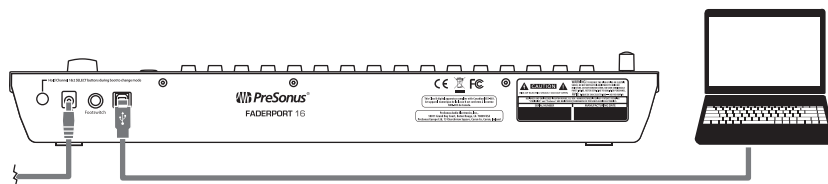


Once you have selected your mode, press the Select button below the "Exit" screen to reboot your FaderPort. This mode will be selected automatically every time you boot your FaderPort.

If you would like to change the mode at any point, power on the unit while holding down the first two Select buttons.

Power User Tip: From this menu, you can also adjust the fader sensitivity and speed to fine tune your FaderPort to work the way you want it. *Please see Section 10 for more information on the customized setup modes.*

The FaderPort is a class-compliant device in both macOS® and Windows®. Simply connect your FaderPort to a free USB port on your computer. No further installation is necessary.

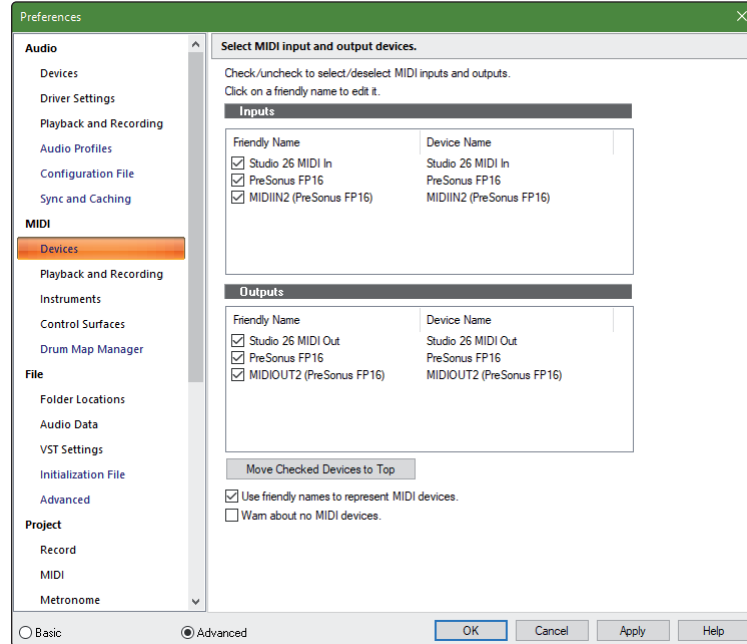


Once you have connected your FaderPort to your computer and the power supply, power it on and, launch Sonar to set up the FaderPort as a Mackie Control Universal device.

FaderPort 16 Users: Because Mackie Control Universal is an 8-channel protocol, you will need to create two devices: one Mackie Control and one Mackie ControlXT.

1. In Sonar, go to Edit | Preferences | MIDI | Devices and check PreSonus FP16 or PreSonus FP8. **FaderPort 16 Users** must also check MIDIIN2 (PreSonus FP16) as MIDI Inputs and PreSonus FP16 and MIDIOUT2 (PreSonus FP16) as MIDI Outputs.

Click Apply when finished.



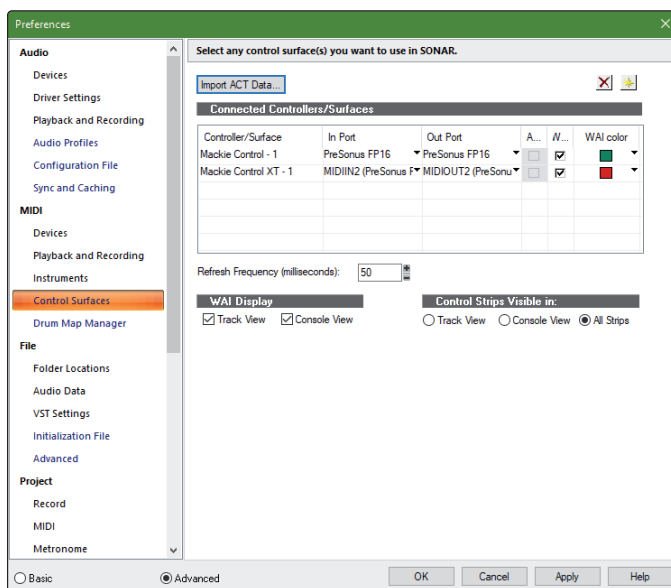
2. Next, go to the Control Surfaces section and click the yellow star to Add a New Control Surface.
3. Select Mackie Control as Controller/Surface.
4. Select "MIDIIN1 (PreSonus FP16)" or "MIDIIN (PreSonus FP8)" for the Input Port and "MIDIOUT1 (PreSonus FP16)" or "MIDIOUT (PreSonus FP8)" for the Output Port.

FaderPort 8 Users: Click "Apply" and then "OK" to close the window. Your FaderPort 8 is now ready to use.

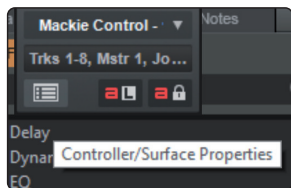
FaderPort 16 Users: Please continue through the remaining steps to complete set-up.

5. Next, go to the Control Surfaces section and click the yellow star to Add a New Control Surface.
6. Select Mackie ControlXT as Controller/Surface.

7. Select "MIDIIN2 (PreSonus FP16)" for the Input Port and "MIDIOUT2 (PreSonus FP16)" for the Output Port.

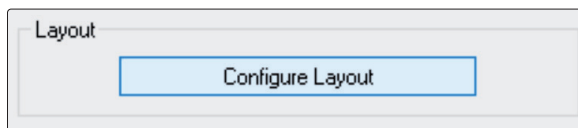


8. Click "Apply" and then "OK" to close the window.
9. Click on the ACT panel button.

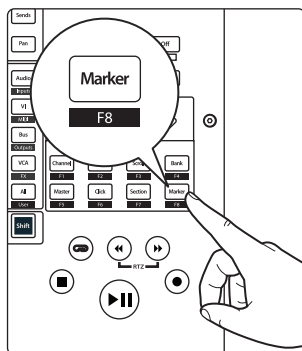


10. Click on the Control Surface Properties button.

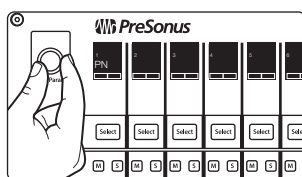
11. From the Control Surface Properties window, click on the Configure Layout button.



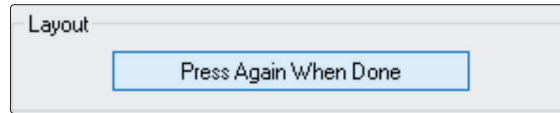
12. On your FaderPort 16, press the Marker button.



13. Turn the Pan /Param encoder one click to the right, until the scribble strips display 1-16.

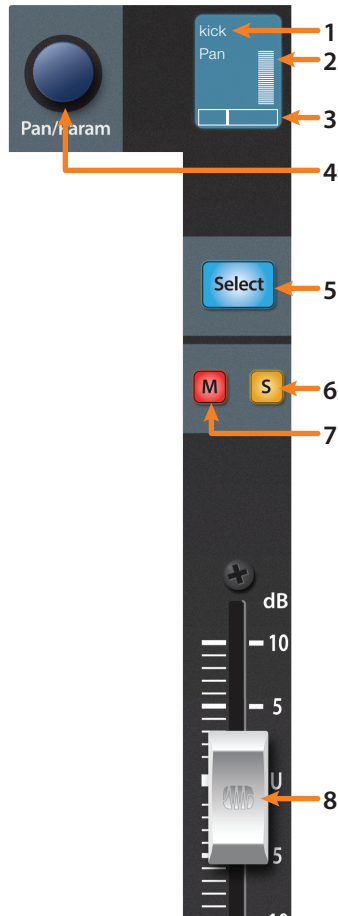


- In Sonar, click on the "Press Again When Done" button and close the window.



Your FaderPort 16 is now ready to use. Enjoy!

6.2 Channel Strip

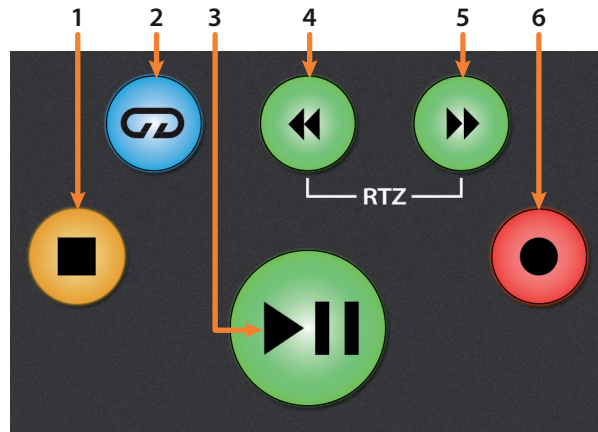


- Channel Name.** Displays the Channel name.
- Metering.** Displays the channel metering. This can be turned on or off by pressing SHIFT plus the push button encoder in the Session Navigator.
- Pan Position.** Displays the Channel's current pan position.
- Pan/Param.** This push-button encoder controls the pan of the currently selected channel while in Track mode.
- Select Button.** This button selects the corresponding channel in Sonar. *See Section 6.2.1 for alternate functions.*
- Solo.** Isolates the corresponding channel's output signal in the mix.
- Mute.** Mutes the corresponding channel's output signal.
- Touch-Sensitive Fader.** This 100 mm motorized fader can be used to control volume levels, aux send levels, panning, or plug-in parameters, depending on mode.

6.2.1 Select Button Modifiers

	Arm. Pressing the Arm button will allow you to arm track for recording by pressing the corresponding track's Select button.
+	Arm All. Press right Shift + Arm to arm the currently focused bank of tracks for recording.
 	Solo and Mute Clear. These buttons will clear all solos or mutes in the currently focused bank of channels.

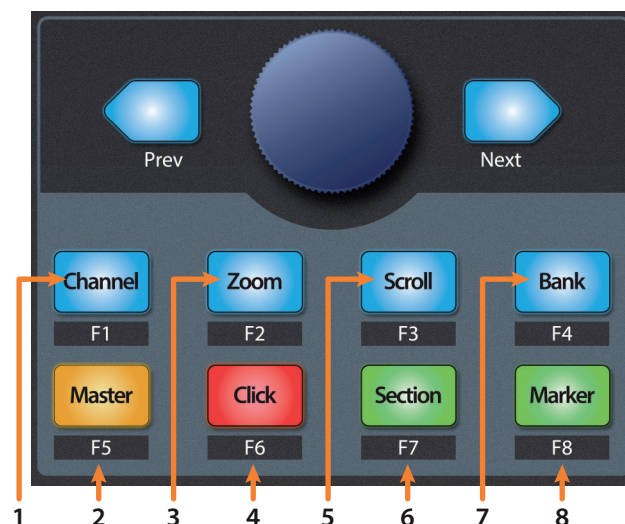
6.3 Transport Controls



1. **Stop.** Stops playback.
2. **Loop.** Engages / disengages looping.
3. **Play / Pause.** Starts playback at the current playback-cursor position. Press again to pause playback.
4. **Rewind.** Press once to regress playback by bar, second, frame, or base sample rate depending on mode. Pressing and holding will rewind more quickly.
5. **Fast Forward.** Press once to advance playback by bar, second, frame, or base sample rate depending on mode. Pressing and holding will fast forward more quickly.
6. **Record.** Starts recording at the current playback-cursor position for record-enabled tracks.

6.4 The Session Navigator

The Session Navigator provides quick controls that you need to navigate your session and your workflow. Each button alters the functions of the push-button encoder and the Next and Prev buttons on either side. Press Shift with any of these buttons to access the F1-F8 Sonar Functions.

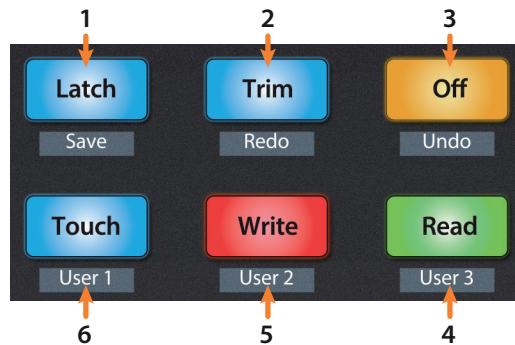


1. **Channel.** Encoder and navigation buttons scroll and select individual channels.
2. **Master.** Navigation buttons to scroll through channels. At the time of publication, control over the master fader in Sonar is not available.
3. **Zoom.** Encoder controls horizontal zooming. Navigation buttons control vertical zooming.
4. **Click.** At the time of publication, click is not available in Sonar.

5. **Scroll.** Encoder and navigation buttons control timeline scrolling.
6. **Section.** Encoder and navigation buttons shift the current bank by one channel.
7. **Bank.** Encoder and navigation buttons scroll through channels in banks of sixteen or eight (model dependent).
8. **Marker.** Encoder and navigation buttons scroll through markers. Press Encoder to drop a marker.

Note: At the time of publication, the F1-F8 functions are not available in Sonar.

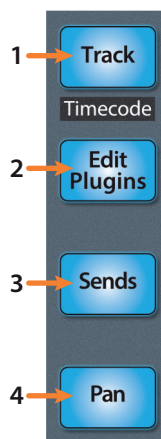
6.5 Automation Controls



1. **Latch / Save.** Press the SHIFT and Latch buttons simultaneously to save session. At the time of publication, Latch automation control is not available in Sonar.
2. **Trim / Redo.** Press the SHIFT and Trim buttons simultaneously to redo the last action. At the time of publication, Trim automation control is not available in Sonar.
3. **Off / Undo.** Press the SHIFT and Off buttons simultaneously to undo the last action.
4. **Read / User 3.** At the time of publication, this button has no function in Sonar.
5. **Write / User 2.** At the time of publication, this button has no function in Sonar.
6. **Touch / User 1.** At the time of publication, this button has no function in Sonar.

6.6 Fader Modes

The faders on the FaderPort can be used to set levels, control plug-in parameters, set send levels, and panning for every track.

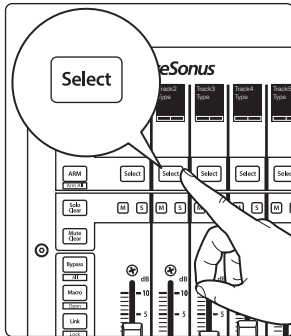


1. **Track.** When Track mode is active, the motorized faders will display and control channel levels. Press Shift and Track simultaneously to display Timecode on the scribble strips. *See Section 6.6.4 for more information.*
2. **Edit Plug-ins.** When Edit Plugins is active, the motorized faders will control the plugin parameters on the currently selected channel's insert slots. *See Section 6.6.1 for more information.*
3. **Sends.** When Sends mode is active, the motorized faders will control the send levels for the first send slot for every channel. Press twice to control send functions for just the selected channel. *See Section 6.6.2 for more information.*
4. **Pan.** When Pan mode is active, the motorized faders will display and control channel pans. Press twice to control the send pan and main pan for the selected channel. When not active, the Pan/Param knob to the left of the scribble strips controls the panning for the currently selected channel. *See Section 6.6.3 for more information.*

6.6.1 Edit Plug-ins Mode

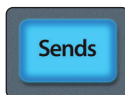


Pressing Edit Plug-ins will display the first insert slot for every channel in the scribble strips.



Press the Select button below any of the insert slots to enable or disable that plug-in.

6.6.2 Sends Mode



Pressing the Sends button will allow you to adjust the first assigned sends for every track in the session.

Press the Sends button twice to control all the send functions for the currently selected track (Level, Pre/Post, Pan, etc.).

6.6.3 Pan Mode



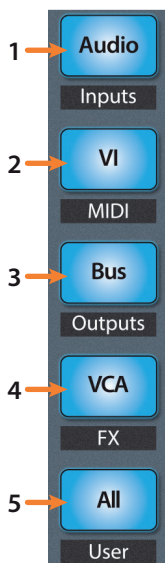
Pressing the Pan button will allow you to adjust the pans for every track using the faders. Press the Pan button a second time to control the send pans and the main pan for the currently select channel.

6.6.4 Timecode



Press the Shift and Track buttons simultaneously to view the Timecode on the last four scribble strips. This follows the type of Timecode you have selected from within Sonar. While Timecode is active, the faders will continue to control level.

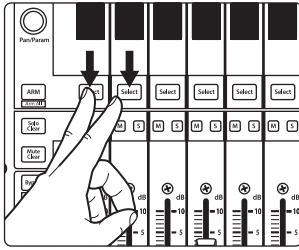
6.7 Mix Management



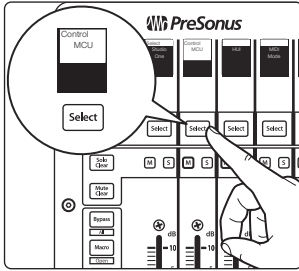
1. **Audio / Inputs.** Press to view Audio tracks only. Press Shift + Audio to create a new audio channel.
2. **VI / MIDI.** Press to view all MIDI tracks. Press Shift + VI to create a New MIDI Track.
3. **Bus / Outputs.** Press to view all Auxes.
4. **VCA / FX.** At the time of publication, this button has no function.
5. **All / User.** At the time of publication, this button has no function

7 Ableton Live (MCU)

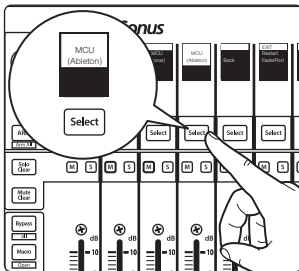
7.1 Getting Started



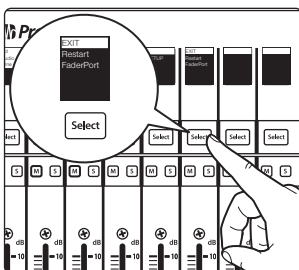
By default, the operation mode on the FaderPort is set Studio One. To switch to Ableton Live operation, power on the unit while pressing the first two select buttons.



This will open the boot mode screen, and you will be given the opportunity to select which mode of operation you'd like to use. Press the Select button below MCU to view the customized MCU operation modes.



When using the FaderPort with Live, select MCU (Ableton) by pressing the Select button below its scribble strip.

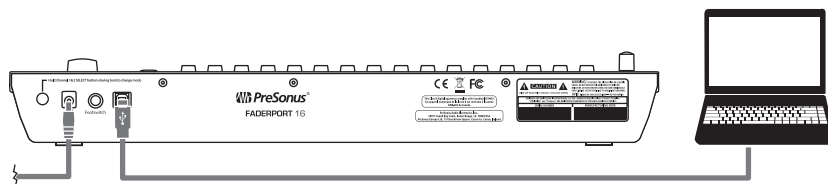


Once you have selected your mode, press the Select button below the "Exit" screen to reboot your FaderPort. This mode will be selected automatically every time you boot your FaderPort.

If you would like to change the mode at any point, power on the unit while holding down the first two Select buttons.

Power User Tip: From this menu, you can also adjust the fader sensitivity and speed to fine tune your FaderPort to work the way you want it. *Please see Section 10 for more information on the customized setup modes.*

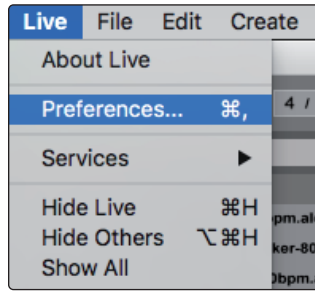
The FaderPort is a class-compliant device in both macOS® and Windows®. Simply connect your FaderPort to a free USB port on your computer. No further installation is necessary.



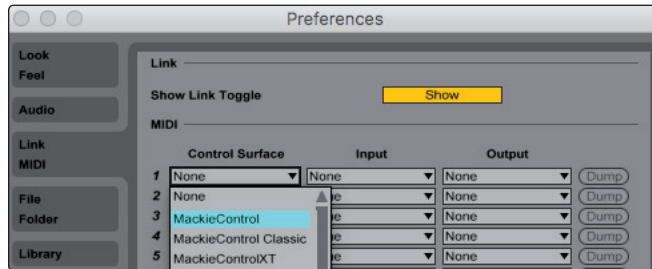
Once you have connected your FaderPort to your computer and the power supply, power it on and, launch Live to set up the FaderPort as a Mackie Control Universal device.

FaderPort 16 Users: Because Mackie Control Universal is an 8-channel protocol, you will need to create two devices: one Mackie Control and one Mackie ControlXT.

1. Go to Live | Preferences



2. Choose the Link MIDI tab and set Control Surface 1 to Mackie Control and the Input and Output to "PreSonus FP16 (Port 1)" or "PreSonus FP8."

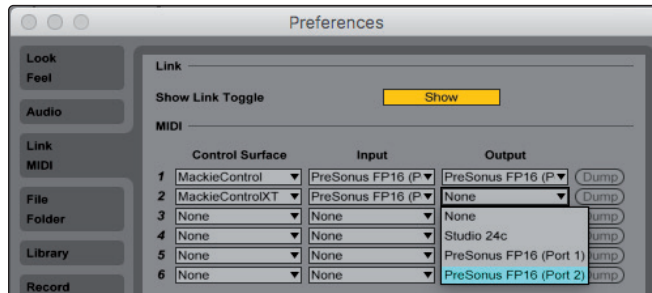


3. Make sure that Track, Sync, and Remote are all enabled for both the Input and the Output of "MackieControl."

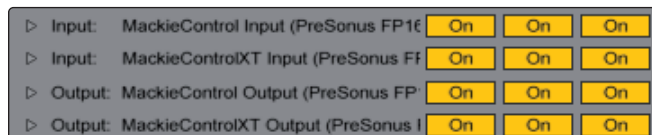
FaderPort 8 Users: Your FaderPort 8 is now ready to use.

FaderPort 16 Users: Please continue through the remaining steps to complete set-up.

4. Set Control Surface 2 to Mackie ControlXT and the Input and Output to "PreSonus FP16 (Port 2)."



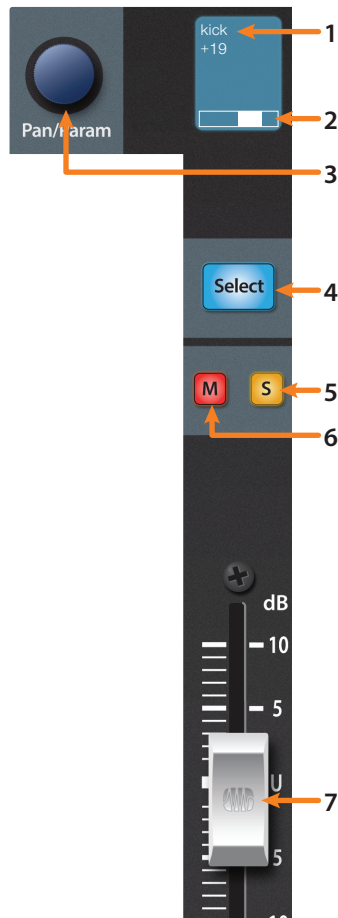
5. Make sure that Track, Sync, and Remote are all enabled for both the Input and the Output for both devices.



6. Close the Preferences window.

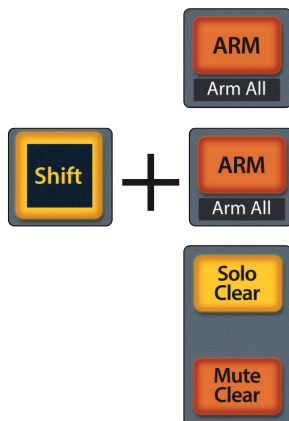
Your FaderPort 16 is now set up and ready to use. Enjoy!

7.2 Channel Strip



1. **Channel Name.** Displays the Channel name and current fader level when a fader is touched.
2. **Pan Display.** Displays the Channel's current pan position.
3. **Pan/Param.** Controls panning for the currently selected channel while in Track mode. Press to reset panning to center.
4. **Select Button.** This button selects the corresponding channel in Live. *See Section 7.2.1 for alternate functions and modes.*
5. **Solo.** Isolates the corresponding channel's output signal in the mix.
6. **Mute.** Mutes the corresponding channel's output signal.
7. **Touch-Sensitive Fader.** This 100 mm motorized fader can be used to control volume levels, aux send levels, panning, or plug-in parameters, depending on mode. *See Section 7.6 for more information.*

7.2.1 Select Button Modifiers



Arm. Pressing the Arm button will allow you to arm track for recording by pressing the corresponding track's Select button.

Arm All. Press Shift + Arm to arm the currently focused bank of tracks for recording.

Solo and Mute Clear. These buttons will clear all solos or mutes in the currently focused bank of channels.

7.2.2 Select Button Editing Functions

Selecting a track will provide several powerful editing functions. Each function is dependent on which Fader Mode is active.



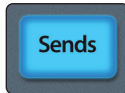
Track Mode

- **Pan.** While Track Mode is active, the Pan/Parameter encoder will control the pan position for that track.



Edit Plug-ins

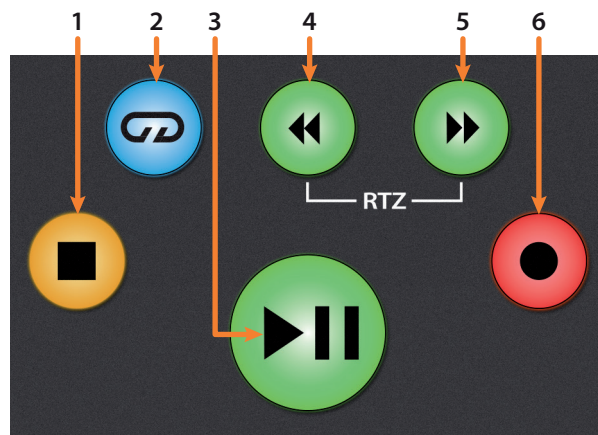
- **Device.** When Edit Plug-ins mode is active, the device(s) for the Selected channel will be displayed. *See Section 7.6.1 for more information.*



Sends

- **Sends.** When Sends mode is active, the aux sends for the Selected channel will be displayed.

7.3 Transport Controls



1. **Stop.** Stops playback. Press twice to Return to Zero.
2. **Loop.** Engages / disengages Looping.
3. **Play / Pause.** Starts playback at the current playback-cursor position. Press again to restart playback at the previous play position.
4. **Rewind.** Press and hold to move the cursor backward through the timeline. Press the Rewind and Fast Forward buttons simultaneously to Return to Zero.
5. **Fast Forward.** Press and hold to move the cursor forwards through the timeline.
6. **Record.** Starts recording at the current playback-cursor position for record-enabled tracks.

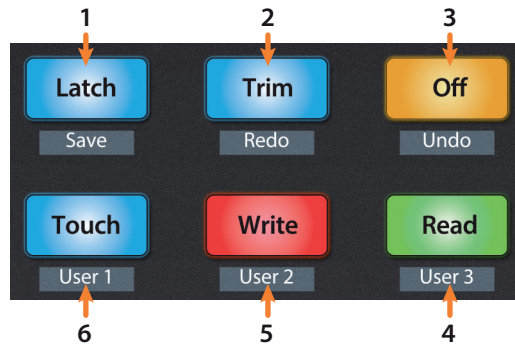
7.4 The Session Navigator

The Session Navigator provides quick navigation and session controls. Each button alters the functions of the push-button encoder and the Next and Prev buttons on either side.



1. **Channel.** Encoder and navigation buttons shift the current bank in one-channel increments.
2. **Master.** Encoder controls the Master Level. Navigation buttons control Channel mode.
3. **Zoom.** While in Arranger view, the encoder controls horizontal zooming. Navigation buttons control vertical zooming for the currently selected track. While in Session view, pressing Zoom once will engage clip/scene launch mode. Zoom and Scroll will both light up.
 - Encoder selects the next/previous scene. Navigation buttons select the next/previous track.
 - Press Zoom to launch the currently selected clip.
 - Press Scroll to launch the currently selected scene.
 - Press any other mode to leave clip/scene launch mode.
4. **Click.** Enables Punch In switch.
5. **Scroll.** While in Arranger view, the encoder and navigation buttons control timeline scrolling. While in Session view, Scroll launches the currently selected scene. **For more information, please refer to Zoom (Call-out #3).**
6. **Section.** Enables Punch Out switch.
7. **Bank.** Encoder and navigation buttons scroll through channels in banks of 8 or 16.
8. **Marker.** Encoder scrolls the timeline. Navigation buttons scroll through markers. Press Encoder to drop a marker.

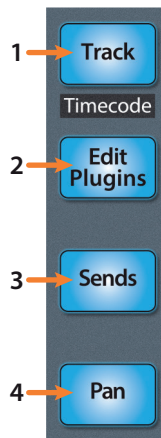
7.5 Automation Controls



1. **Latch / Save.** At the time of publication, this function is not available in Live.
2. **Trim / Redo.** Press to redo the last action.
3. **Undo.** Press to undo the last action.
4. **Read.** Enables Follow Mode. *Note: At the time of publication, this button does not illuminate when Follow Mode is enabled or disabled.*
5. **Write.** Enables Draw Mode.
6. **Touch.** At the time of publication, this function is not available in Live.

7.6 Fader Modes

The faders on the FaderPort can be used to set levels, control plug-in parameters, set send levels, and panning for every channel.



1. **Track.** When Track mode is active, the motorized faders will display and control channel levels. Press Shift and Track simultaneously to display Timecode on the scribble strips. *See Section 7.6.2 for more information.*

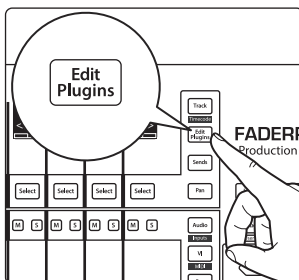
Power User Tip: Press the Shift and All buttons simultaneously to toggle the time code display between beats instead of time.

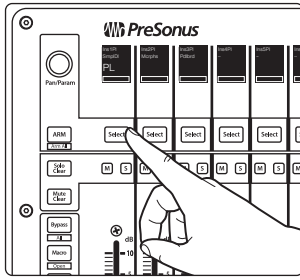
2. **Edit Plug-ins.** When Edit Plug-ins mode is active, the motorized faders will control the parameter settings. The scribble strip will display the parameter each fader controls. *See Section 7.6.1 for more information.*
3. **Sends.** When Sends mode is active, the motorized faders will control the send levels for the selected channel.
4. **Pan.** When Pan mode is active, the motorized faders will display and control channel pan. When not active, the Pan/Param knob to the left of the scribble strips controls the panning for the currently selected channel.

7.6.1 Edit Plug-ins

Your FaderPort can be used to control your favorite plug-ins in Live as follows:

1. Press Edit Plug-ins once. This will display every device for the currently selected channel in the scribble strips.





2. Press the Select button below any of the insert slots to edit that plug-in's parameters. Use the Pan/Param knob to access additional parameters. Press the Edit Plugins button again to return to device selection.

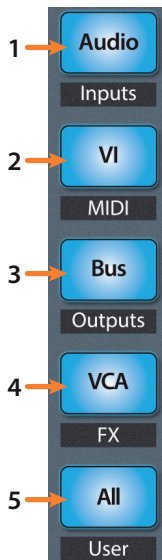
7.6.2 Timecode



Press the Shift and Track buttons simultaneously to view the Timecode on the scribble strips. This follows the type of Timecode you have selected from within Live. While Timecode is active, the faders will continue to control level.

Press the Shift and All buttons simultaneously to toggle the time code display between beats instead of time.

7.7 Mix Management



1. **Audio / Inputs.** Press to toggle between Session and Arrangement view. When the Session view is active, this button will illuminate blue.
2. **VI / MIDI.** Press to toggle between Clip and FX view. When the Clip view is active, this button will illuminate blue..
3. **Bus / Outputs.** Press to toggle the Browser view on and off. When the Browser view is active, this button will illuminate blue.
4. **VCA / FX.** Press to toggle Detail view on and off. When the Detail view is active, this button will illuminate blue..
5. **All / User.** At the time of publication, this button has no function in Live.

7.8 Custom Live Controls



Link. Back to Arrangement. The Link button will be blue if there is a clip currently playing in Session view.



Macro. View In/Out routing. With each Pan/Param encoder press, the display will change as follows:

1. Default, Input Type
2. Input Channel
3. Output Type
4. Output Channel (if applicable)

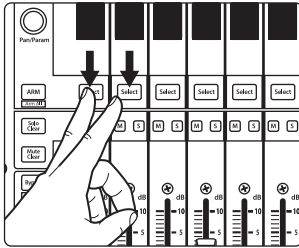
After reaching Output Channel, the display will loop back to Input Type on the next press.



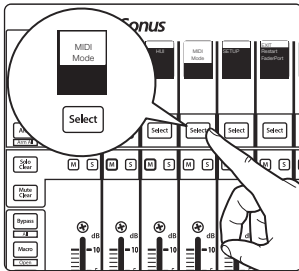
Bypass. Switch faders to control Return tracks.

8 MIDI Mode

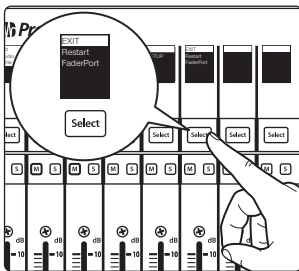
8.1 Getting Started



By default, the operation mode on the FaderPort is set Studio One. To switch to MIDI control, power on the unit while pressing the first two select buttons.



This will open the boot mode screen, and you will be given the opportunity to select which mode of operation you'd like to use. Press the Select button below MIDI mode to enable default MIDI mappings for every function on your FaderPort. This will allow you to create a custom map within your desired application.

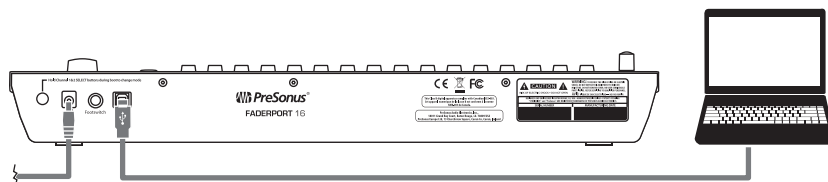


Once you have selected your mode, press the Select button below the "Exit" screen to reboot your FaderPort. This mode will be selected automatically every time you boot your FaderPort.

If you would like to change the mode at any point, power on the unit while holding down the first two Select buttons.

Power User Tip: From this menu, you can also adjust the fader sensitivity and speed to fine tune your FaderPort to work the way you want it. **Please see Section 10 for more information on the customized setup modes.**

The FaderPort is a class-compliant device in both macOS® and Windows®. Simply connect your FaderPort to a free USB port on your computer. No further installation is necessary.



8.1.1 Using MIDI Mode with DAW Mode

FaderPort 8 and 16 also offer a way to switch to MIDI Mode "on-the-fly" from any of the DAW control modes. This allows a user to switch between a DAW control mode and MIDI control mode at any point without having to power cycle the FaderPort 8 / 16.

8.1.2 Implementation

The MIDI Mode of the FaderPort 8 / 16 was intended to allow users a set of controls (faders, buttons, encoders) that are pre-assigned to common MIDI CC messages that many composers and producers utilize. In addition, most DAW's, or instrument softwares can also utilize the MIDI CC controllers for MIDI learn functionality in that software. This implementation is intended to be a one-way communication from the controller to the software. It is not necessary that the controller receives feedback from the software for Fader placement or LED button sync.

8.1.3 DAW Setup of the MIDI Mode

In the DAW, a user must configure a separate generic MIDI controller and set its MIDI ports to "PreSonus FP8 MIDI Mode" and "PreSonus FP16 Port 3" for macOS. On Windows, the MIDI port for MIDI Mode will be named "PreSonus FP8 MIDIIN2" and "PreSonus FP8 MIDIOUT2" for the FaderPort 8, and for the FaderPort 16, "FP16 MIDIIN3" and "FP16 MIDIOUT3". When using Studio One this must be setup as a "New Keyboard" device in the "External Devices" menu. Follow the manual instructions for setting up a MIDI controller in other DAW's.

By default, you can use the common pre-mapped MIDI CC's messages generated by each fader, button, or encoder for most applications. However, by using the MIDI learn functionality of the music software, a user can specifically link hardware controls to software parameters.

8.2 Using MIDI Mode with DAW Operating Mode

MIDI Mode can also be toggled on and off while in any of the DAW Operating Modes. This allows you to switch between any DAW Operation Mode and MIDI control mode at any point without having to power cycle your FaderPort.

MIDI Mode is designed to provide you with a set of controls (faders, buttons, encoders) that are pre-assigned to MIDI CC messages that are commonly used by composers and producers.

Additionally, most DAW and stand-alone instrument applications can also utilize these MIDI CC messages for MIDI learn functions in these applications. This implementation is intended to be a one-way communication from the controller to the software. It is not necessary for the controller to receive feedback from the software for Fader placement or LED button sync.

8.2.1 DAW Setup for MIDI Mode

To be able to toggle between MIDI mode and your DAW's Operation Mode, you must configure a separate generic MIDI controller and set its MIDI ports to "FaderPort [8 or 16] MIDI Mode" (macOS) or "MIDIIN3 (FaderPort [8 or 16])" (Windows).

When using Studio One this must be set up as a "New Keyboard" device in the "External Devices" menu. For all other DAWs, please follow the instructions that came with your DAW to configure a new MIDI controller.

By default, you can use the common pre-mapped MIDI CC's messages generated by each fader, button, or encoder for most applications. However, by using the MIDI learn functionality of your music software, you can link hardware controls to specific software parameters of your choice.

To enter MIDI operation mode on your FaderPort while in any Operation Mode:

1. While in any Standard Operation mode (Studio One, Live, etc.), press both Shift buttons simultaneously.
2. The screens will display "MIDI Mode".
3. The previous standard operation mode (Studio One, Live, etc.) will be disabled and your FaderPort will only send out the defined MIDI values *in Section 8.3*.

To exit MIDI Mode on your FaderPort and return to DAW control functions:

1. Press both Shift buttons simultaneously.
2. Your FaderPort will return to the last used standard operation mode

8.3 MIDI Mappings

While MIDI Mode is active, the following MIDI messages will be sent from the FaderPort:

Channel Strip Controls		
Button Label	HEX Value	MIDI CC
Solo 1	B3 017	23
Solo 2	B3 018	24
Solo 3	B3 019	25
Solo 4	B3 01A	26
Solo 5	B3 01B	27
Solo 6	B3 01C	28
Solo 7	B3 01D	29
Solo 8	B3 01E	30
Solo 9 (FaderPort 16)	B3 01F	31
Solo 10 (FaderPort 16)	B3 055	85
Solo 11 (FaderPort 16)	B3 056	86
Solo 12 (FaderPort 16)	B3 057	87
Solo 13 (FaderPort 16)	B3 058	88
Solo 14 (FaderPort 16)	B3 059	89
Solo 15 (FaderPort 16)	B3 05A	90
Solo 16 (FaderPort 16)	B3 066	102
Mute 1	B2 017	23
Mute 2	B2 018	24
Mute 3	B2 019	25
Mute 4	B2 01A	26
Mute 5	B2 01B	27
Mute 6	B2 01C	28
Mute 7	B2 01D	29
Mute 8	B2 01E	30
Mute 9 (FaderPort 16)	B2 01F	31
Mute 10 (FaderPort 16)	B2 055	85
Mute 11 (FaderPort 16)	B2 056	86
Mute 12 (FaderPort 16)	B2 057	87
Mute 13 (FaderPort 16)	B2 058	88
Mute 14 (FaderPort 16)	B2 059	89
Mute 15 (FaderPort 16)	B2 05A	90
Mute 16 (FaderPort 16)	B2 066	102

Channel Strip Controls		
Button Label	HEX Value	MIDI CC
Select 1	B1 040	64
Select 2	B1 042	66
Select 3	B1 043	67
Select 4	B1 041	65
Select 5	B1 044	68
Select 6	B1 050	80
Select 7	B1 051	81
Select 8	B1 07B	123
Select 9 (FaderPort 16)	B1 01F	127
Select 10 (FaderPort 16)	B1 055	85
Select 11 (FaderPort 16)	B1 056	86
Select 12 (FaderPort 16)	B1 057	87
Select 13 (FaderPort 16)	B1 058	88
Select 14 (FaderPort 16)	B1 059	89
Select 15 (FaderPort 16)	B1 05A	90
Select 16 (FaderPort 16)	B1 066	102
Fader 1	B0 001	1
Fader 2	B0 00B	11
Fader 3	B0 007	7
Fader 4	B0 00A	10
Fader 5	B0 005	5
Fader 6	B0 054	84
Fader 7	B0 002	2
Fader 8	B0 010	16
Fader 9 (FaderPort 16)	B0 011	17
Fader 10 (FaderPort 16)	B0 012	18
Fader 11 (FaderPort 16)	B0 013	19
Fader 12 (FaderPort 16)	B0 046	70
Fader 13 (FaderPort 16)	B0 047	71
Fader 14 (FaderPort 16)	B0 048	72
Fader 15 (FaderPort 16)	B0 049	73
Fader 16 (FaderPort 16)	B0 04A	74

General Controls (Left Side)		
Button Label	HEX Value	MIDI CC
Pan / Param Turn Encoder	B0 030	48
Pan / Param Push Encoder	B0 017	23
Arm	B0 018	24
Solo Clear	B0 019	25
Mute Clear	B0 01A	26
Bypass	B0 01B	27
Macro	B0 01C	28
Link	B0 01D	29

Fader Mode Buttons		
Button Label	HEX Value	MIDI CC
Track	B4 017	23
Edit Plugins	B4 018	24
Send	B4 019	25
Pan	B4 01A	26

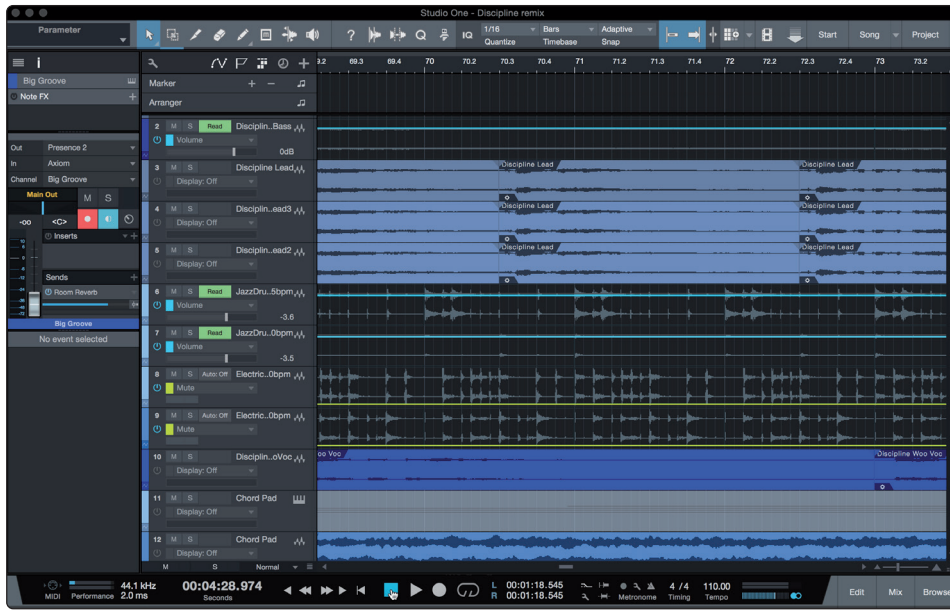
Session Navigator		
Button Label	HEX Value	MIDI CC
Prev	B4 066	102
Session Navigator Turn Encoder	B0 031	49
Session Navigator Push Encoder	B5 017	23
Next	B5 018	24
Channel	B5 019	25
Zoom	B5 01A	26
Scroll	B5 01B	27
Bank	B5 01C	28
Master	B5 01D	29
Click	B5 01E	30
Section	B5 01F	31
Marker	B5 055	85

Mix Management		
Button Label	HEX Value	MIDI CC
Audio	B4 01B	27
VI	B4 01C	28
Bus	B4 01D	29
VCA	B4 01E	30
All	B4 01F	31

Automation		
Button Label	HEX Value	MIDI CC
Latch	B4 055	85
Trim	B4 056	86
Off	B4 057	87
Touch	B4 058	88
Write	B4 059	89
Read	B4 05A	90

Transport		
Button Label	HEX Value	MIDI CC
Stop	0xF0 7F 7F 06 01 F7	n/a
Loop	B5 057	87
Rewind	0xF0 7F 7F 06 05 F7	n/a
Fast Forward	0xF0 7F 7F 06 04 F7	n/a
Record	0xF0 7F 7F 06 06 F7	n/a
Play	0xF0 75 75 06 02 F7	n/a
Footswitch	B6 017	23

9 Studio One Artist Quick Start



All registered FaderPort multichannel controller users receive Studio One Artist recording and production software. Whether you are about to record your first album or your fiftieth, Studio One Artist provides you with all of the tools necessary to capture and mix a great performance.

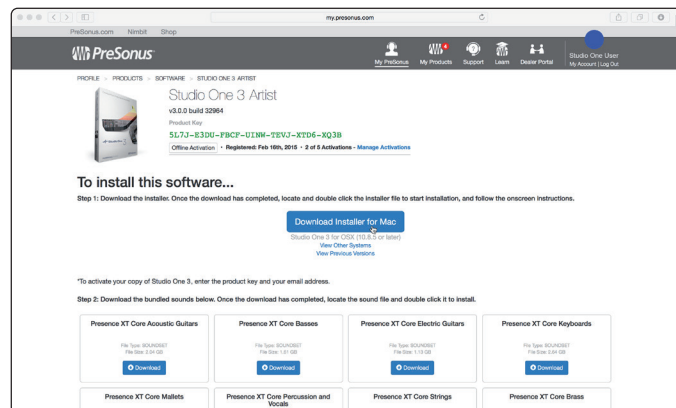
Power User Tip: As a valued PreSonus customer, you are eligible for a discount upgrade to Studio One Professional. For more details on the Studio One upgrade program for PreSonus customers, please visit <https://shop.presonus.com/products/software/studio-one-prods>.

9.1 Installation and Authorization

Once you have installed the drivers for your audio interface and connected it to your computer, you can use the included PreSonus Studio One Artist music-production software to begin recording, mixing, and producing your music. To install Studio One Artist, log into your My PreSonus account and register your FaderPort. Your product key for Studio One Artist will automatically be registered to your My PreSonus account, along with your hardware registration.

Downloading and Running the Studio One Installer

To install Studio One Artist, download the Studio One Artist installer from your My PreSonus account to the computer on which you will use it.



Windows: Launch the Studio One Artist installer and follow the onscreen instructions.

Mac: Drag the Studio One Artist application into the Applications folder on your Mac hard drive.

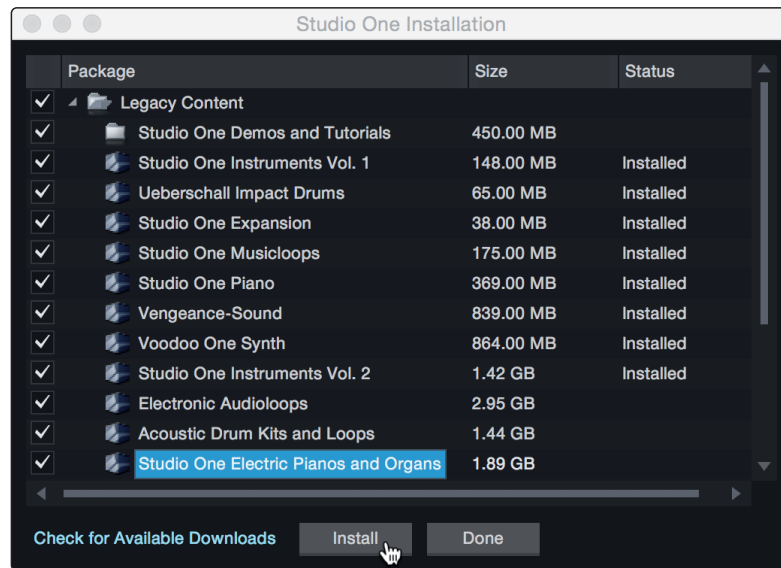
Authorizing Studio One

When Studio One is launched for the first time on your computer, it will communicate with your My PreSonus account and verify your registration. To ensure a seamless authorization process, make sure to download your installer to the computer on which you will be using it, and be sure that your computer is connected to the Internet when you launch the application for the first time.

Installing Bundled Content for Studio One Artist

Studio One Artist comes bundled with an array of demo and tutorial materials, instruments, loops, and samples. The Studio One Artist bundle includes all that you need to begin producing music.

The first time you launch Studio One Artist, you will be prompted to install its companion content. Select the content you wish to add and click "Install." The content will automatically begin to download and install from your My PreSonus user account.



Power User Tip: You may be prompted to enter your My PreSonus user account information. Clicking "Remember Credentials" will allow you to have immediate access to any content you purchase from the PreSonus Marketplace.

9.2 Setting Up Studio One

Studio One Artist was designed to work with PreSonus interfaces and provides unique interoperability and simplified setup. When Studio One Artist is launched, by default you will be taken to the Start page. On this page, you will find document-management and device-configuration controls, as well as a customizable artist profile, a news feed, and links to demos and tutorials from PreSonus. If your computer is connected to the Internet, these links will be updated as new tutorials become available on the PreSonus Web site.

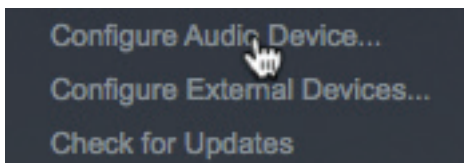
Complete information on all aspects of Studio One Artist is available in the Reference Manual PDF located within Studio One. The information in this tutorial covers only the basic aspects of Studio One Artist and is intended to get you set up and recording as quickly as possible.

9.2.1 Configuring Audio Devices

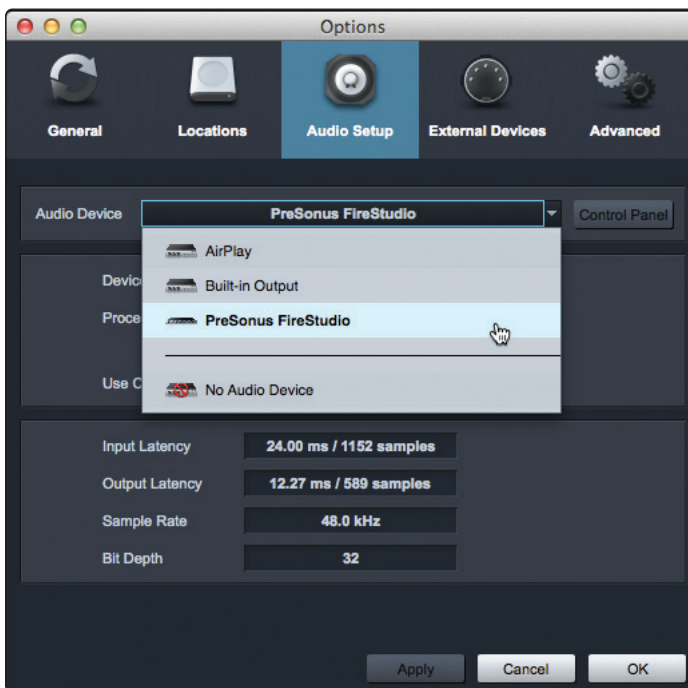
In the middle of the Start page, you will see the Setup area. Studio One Artist automatically scans your system for all available drivers and selects a driver. By default, it will choose a PreSonus driver if one is available.



1. Click on the Configure Audio Interface link to select your audio interface driver.



2. Select your audio interface from the Audio Device pull-down menu. From this page, you can also adjust your device buffer block size. Click OK when you are finished.



9.2.2 Configuring MIDI Devices

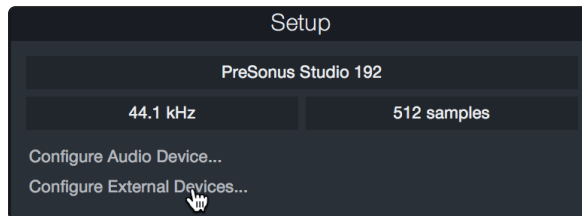
From the External Devices window in Studio One Artist, you can configure your FaderPort, MIDI keyboard controller, sound modules, and control surfaces. This section will guide you through setting up your FaderPort as well as other MIDI keyboard controllers and sound modules. Please consult the Reference Manual located within Studio One for complete setup instructions for other MIDI devices.

If you are using a third-party MIDI interface or USB MIDI-controller keyboard, you must install any required drivers for these devices before beginning this section. Please consult the documentation that came with your MIDI hardware for complete installation instructions.

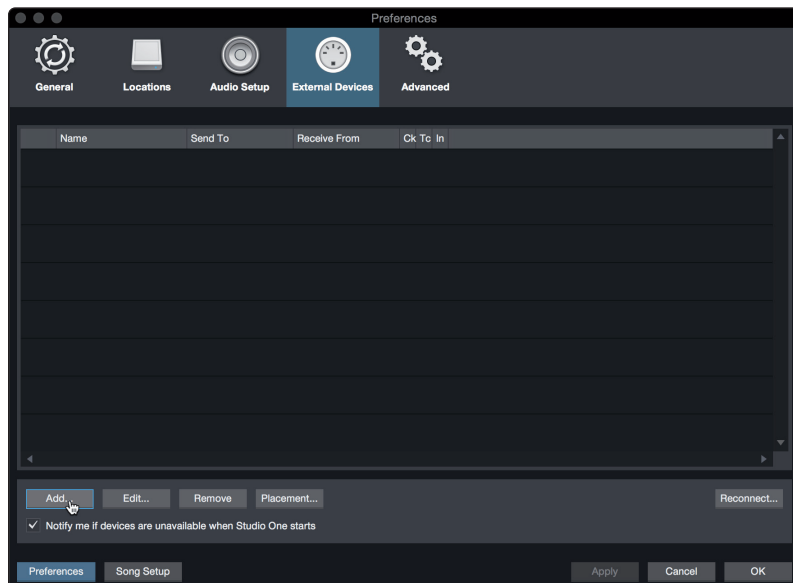
Setting up the FaderPort

You can set up your FaderPort from the Setup area in the Start page. Before you begin, make sure your FaderPort is connected to one of your computer's USB ports, is powered on, and set to Studio One mode.

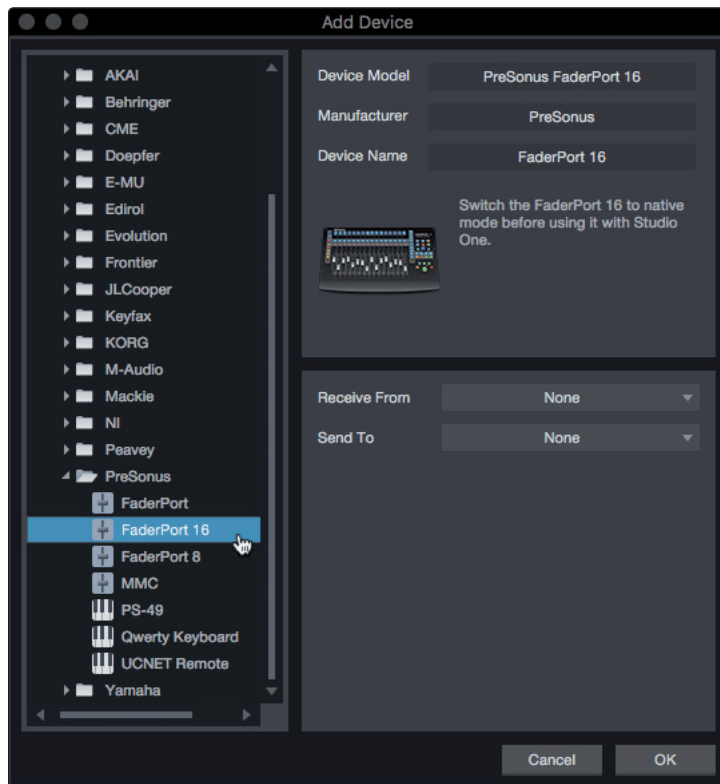
1. Click on the Configure External Devices link in the Setup area on the Start page to launch the External Devices window.



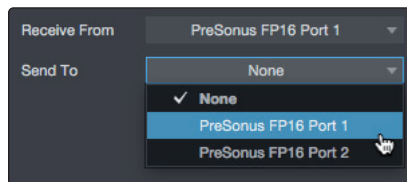
2. Click the Add button. This will launch the Add Device window.



- From the menu on the left, click on the PreSonus folder and select "FaderPort 16" or "FaderPort 8" from the dropdown list.



- In the Receive From and Send To drop-down menus, select "PreSonus FP16 Port 1" or "PreSonus FP8".



- Click "OK."

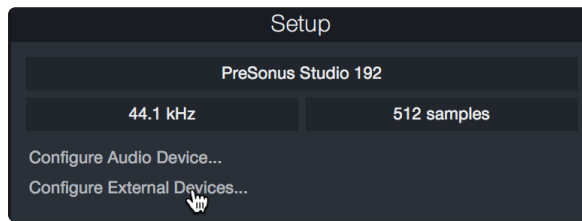
Setting up a MIDI Keyboard controller

A MIDI keyboard controller is a hardware device that is generally used for playing and controlling other MIDI devices, virtual instruments, and software parameters. In Studio One Artist, these devices are referred to as Keyboards, and they must be configured before they are available for use. In some cases, your MIDI keyboard controller is also used as a tone generator. Studio One Artist views the controller and tone-generation functions as two different devices: a MIDI keyboard controller and a sound module. The MIDI controls (keyboard, knobs, faders, etc.) will be set up as a Keyboard. The sound modules will be set up as an Instrument.

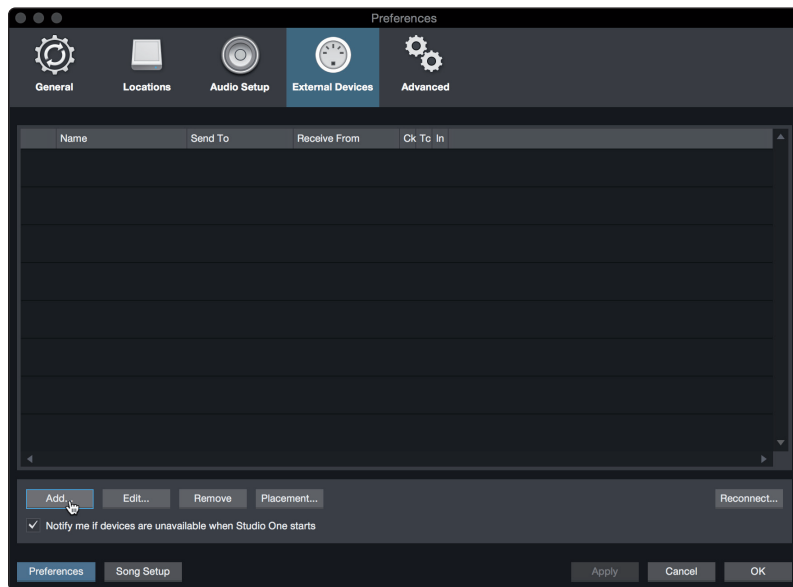
You can set up your external MIDI devices from the Setup area in the Start page. Before setting up a new Song for recording, take a moment to configure external devices.

Make sure you have connected the MIDI Out of your external MIDI controller to a MIDI In on your PreSonus audio interface (if available) or another MIDI interface. If you are using a USB MIDI controller, connect it to your computer and power it on.

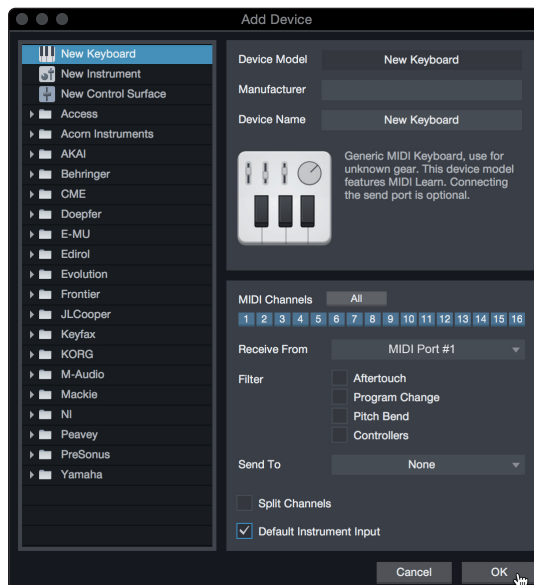
1. Click on the Configure External Devices link in the Setup area on the Start page to launch the External Devices window.



2. Click the Add button. This will launch the Add Device window.



3. From the menu on the left, select your MIDI controller from the list of manufacturers and models. If you do not see your MIDI controller listed, select New Keyboard. At this point, you can customize the name of your keyboard by entering the manufacturer and device names.



4. You must specify which MIDI channels will be used to communicate with this keyboard. For most purposes, you should select all MIDI channels. If you are unsure of which MIDI channels to choose, select all 16.
5. Studio One allows you to filter out specific control functions. If you would like Studio One to ignore Aftertouch, Pitch Bend, Program Change, or all CC messages, enable filtering for any or all of these messages.

6. In the Receive From drop-down menu, select the MIDI interface input from which Studio One Artist will receive MIDI data (that is, the MIDI port to which your keyboard is connected).

Power User Tip: In the Send To drop-down menu, select the MIDI interface output from which your Studio One Artist will send MIDI data to your keyboard. If your keyboard controller doesn't need to receive MIDI data from Studio One, you can leave this unselected.

7. If this is the only keyboard that you will use to control your external synthesizers and virtual instruments, you should check the box next to Default Instrument Input. This will automatically assign your keyboard to control all MIDI devices in Studio One Artist.
8. Click "OK."

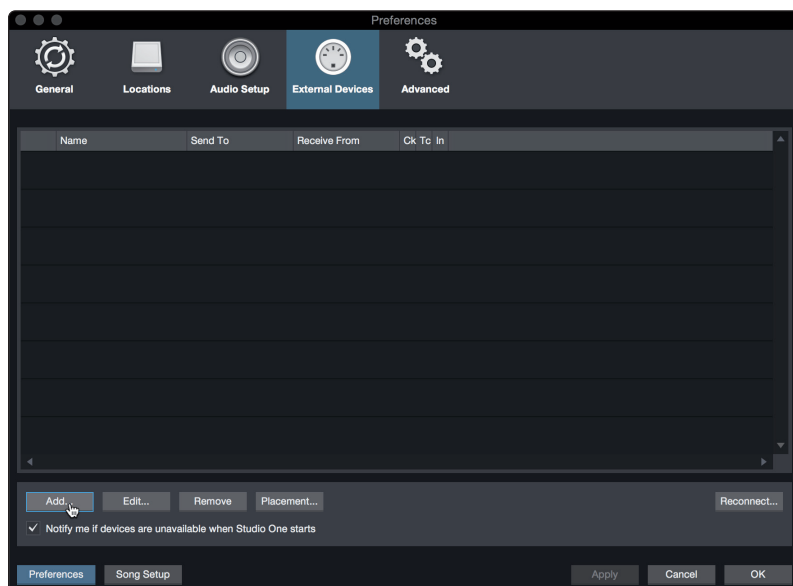
If you have a sound module that you'd like to connect, leave the External Devices window open and proceed to the next part of this section. If not, you can close the window and skip to the next section.

Setting up an External MIDI Sound Module

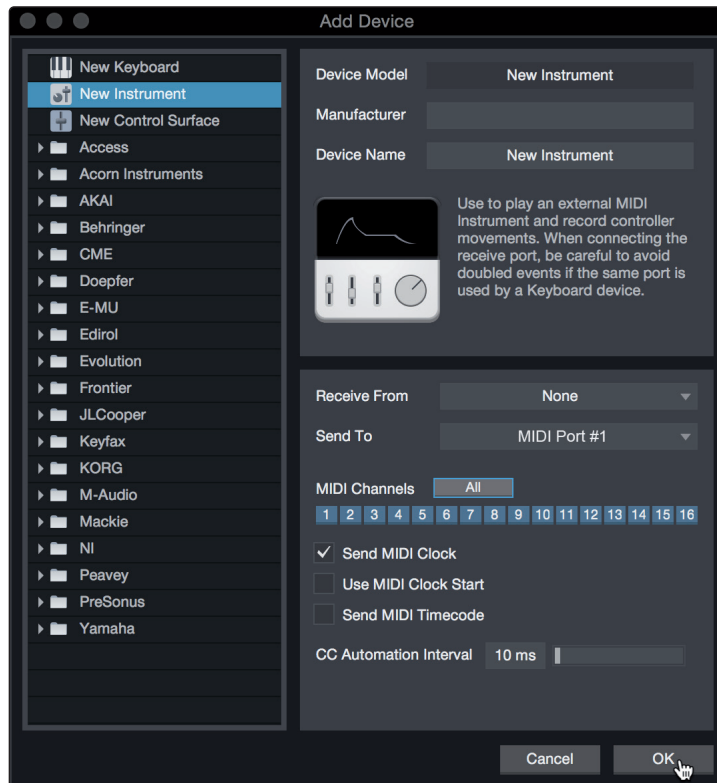
MIDI instrument controllers (keyboards, MIDI guitars, etc.) send musical information, in the form of MIDI data, to tone modules and virtual instruments, which respond by generating sound as instructed. Tone modules can be standalone sound devices or can be integrated into a MIDI instrument, such as a keyboard synthesizer. Studio One Artist refers to all tone generators as Instruments. Once you have set up your MIDI keyboard controller, take a moment to configure your sound module.

Make sure you have connected the MIDI In of your external sound module to the MIDI Out of your MIDI interface.

1. In the External Devices window, click the Add button.



2. Select your device in the menu on the left. If your device is not listed, select New Instrument. At this point, you can customize the name of your keyboard by entering the manufacturer and device names.



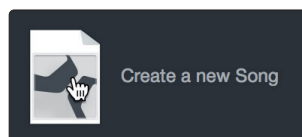
3. Specify which MIDI channels will be used to communicate with this sound module. For most purposes, you should select all MIDI channels. If you are unsure of which MIDI channels to select, we suggest you select all 16.
4. In the Send To menu, select the MIDI interface output from which Studio One Artist will send MIDI data to your sound module. Click "OK" and close the External Devices window. You are now ready to start recording in Studio One Artist.

The rest of this Quick Start Guide will go over how to set up a Song and will discuss some general workflow tips for navigating through the Studio One Artist environment.

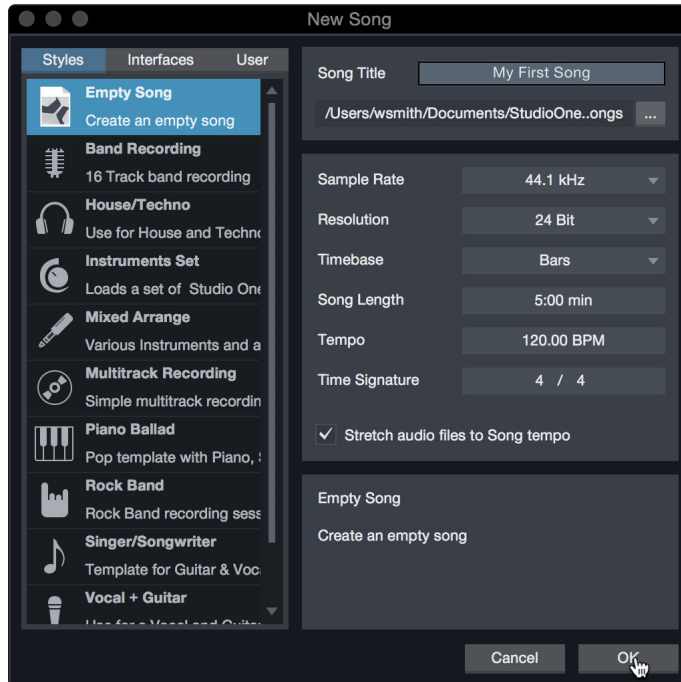
9.3 Creating a New Song

Now that you've configured your audio and MIDI devices, let's create a new Song. We'll start by setting up your default audio I/O.

1. From the Start page, select "Create a New Song."



- In the New Song window, name your Song and choose the directory in which you'd like it saved. You'll notice a list of templates on the left. These templates provide quick setups for a variety of devices and recording situations. The section will describe creating a Song from an empty session.

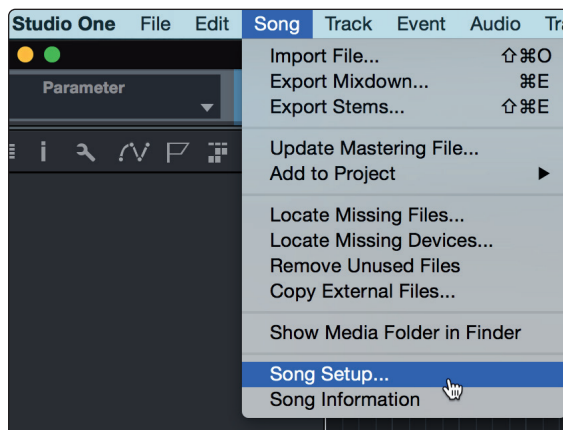


- Select "Empty Song" from the Templates list. At this point, you should give your Song a name and select your preferred sample rate and bit depth for recording and playback. You can also set the length of your Song and the type of time format you would like the timeline to follow (notation bars, seconds, samples, or frames). Click the OK button when you are finished.

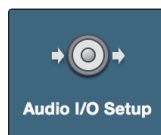
Power User Tip: If you plan to import loops into your Song, make sure that the *Stretch Audio Files to Song Tempo* option is selected. This will automatically import loops at the correct tempo.

9.3.1 Configuring Your Audio I/O

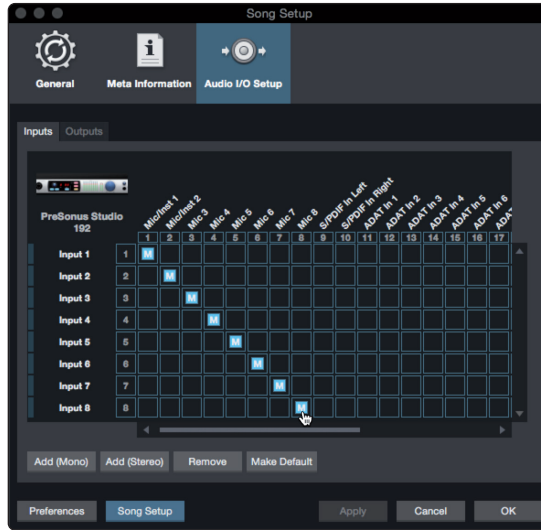
- Click on Song | Song Setup to set your sample rate and resolution and configure your audio I/O.



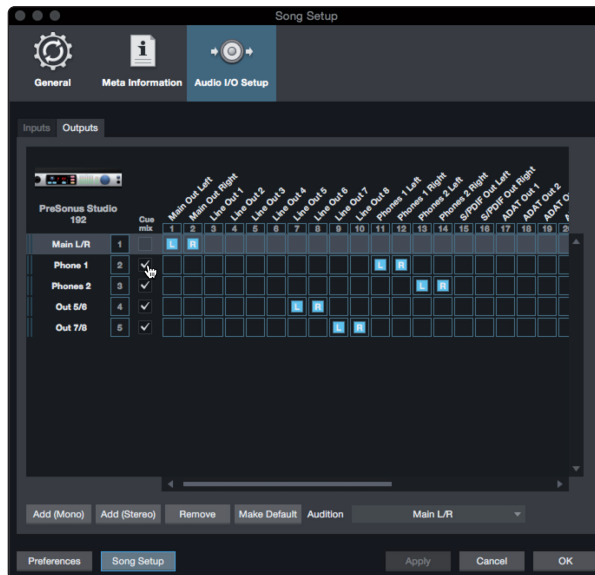
- Click on the Audio I/O Setup tab.



- From the Inputs tab, you can enable any or all of the inputs on your audio interface that you'd like to have available. We recommend that you create a mono input for each of the inputs on your interface. If you plan on recording in stereo, you should also create a few stereo inputs.



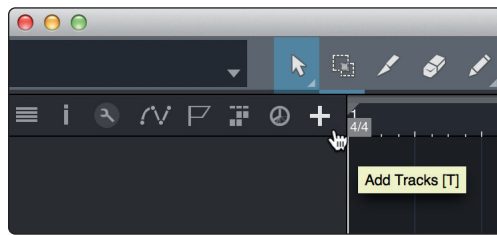
- Click on the Outputs tabs to enable any or all of the outputs on your audio interface. In the lower right corner, you will see the Audition Select menu. This allows you to choose the output from which you will audition audio files prior to importing them into Studio One Artist. In general, you will want this to be the main output bus.



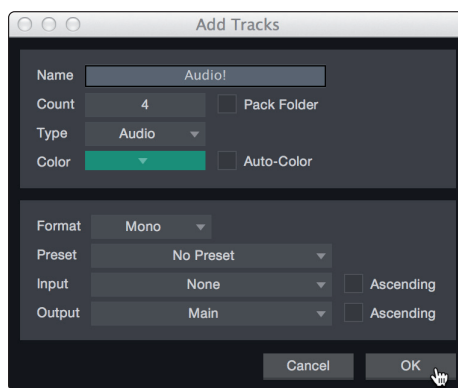
Power User Tip: If you would like this I/O configuration to be the same every time you open Studio One, click the Make Default button.

9.3.2 Creating Audio and Instrument Tracks

1. In the upper left corner of the Arrange window, you will notice several buttons. The button furthest to the right is the Add Tracks button. Click on this button to open the Add Tracks window.



2. In the Add Tracks window, you can customize the track name and color, add a preset rack of effects, and set the physical source for the input and output of your audio tracks. Most important, you can select the number and type of tracks you'd like to create.



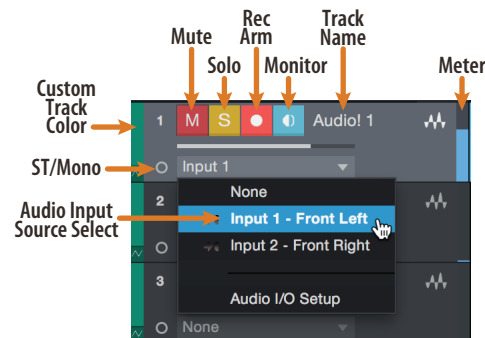
Audio. Use this track type to record and playback audio files.

Instrument. Use this track to record and playback MIDI data to control external MIDI devices or virtual instrument plug-ins.

Automation. This track type lets you create automated parameter controls for your session.

Folder. This track helps you to manage your session as well as to quickly edit multiple tracks at once.

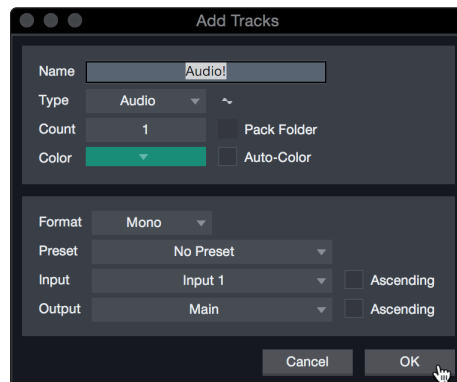
Power User Tip: If you would like to add an audio track for each of the available inputs, go to [Track | Add Tracks for All Inputs](#).



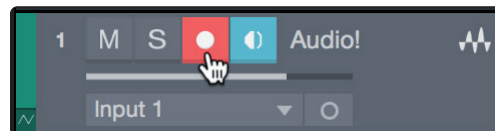
Note: Instrument tracks are nearly identical to audio tracks. The Input Source list for Instrument tracks lists available external MIDI devices as well as any virtual instruments that have been added to the Song.

9.3.3 Recording an Audio Track

1. To begin recording, create an audio track from the Add Tracks window, set its input to Input 1 on your audio interface, and connect a microphone to the same input.



2. Select Record Enable on the track. Turn up the Input 1 level on your audio interface while speaking/singing into the microphone. You should see the input meter in Studio One Artist react to the input. Adjust the gain so the input level is near its maximum without clipping (distorting).



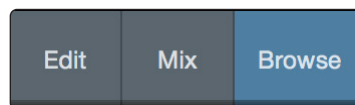
You are now ready to start recording. *For complete instructions, please consult the Studio One Reference manual located in Help | Studio One Reference Manual.*

9.3.4 Adding Virtual Instruments and Effects

You can add plug-ins and instruments to your Song by dragging-and-dropping them from the browser. You can also drag an effect or group of effects from one channel to another, drag in customized effects chains, and instantly load your favorite virtual-instrument preset without ever scrolling through a menu.

Opening the browser

In the lower right corner of the Arrange window are three buttons:



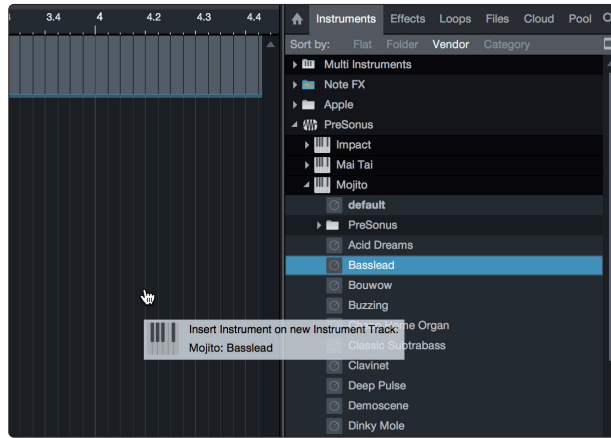
Edit. The Edit button opens and closes the audio and MIDI editors.

Mix. The Mix button opens and closes the Mixer window.

Browse. The Browse button opens the browser, which displays all of the available virtual instruments, plug-in effects, audio files, and MIDI files, as well as the pool of audio files loaded into the current session.

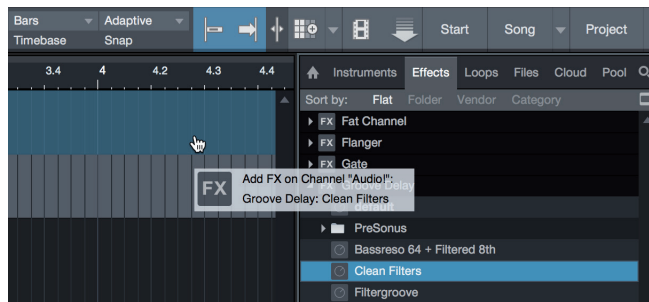
Drag-and-Drop Virtual Instruments

To add a virtual instrument to your session, open the browser and click on the Instrument button. Select the instrument or one of its patches from the Instrument browser and drag it into the Arrange view. Studio One Artist will automatically create a new track and load the instrument as the input.



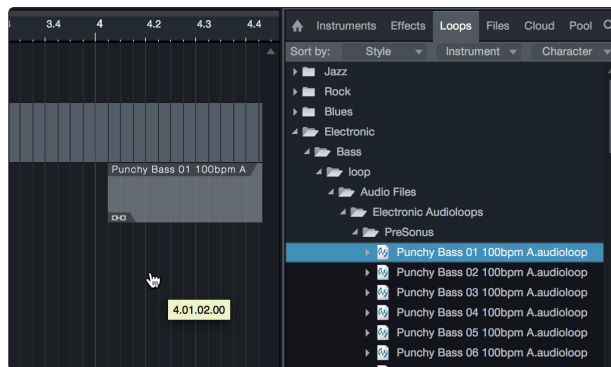
Drag-and-Drop Effects

To add a plug-in effect to a track, click the Effects button in the browser and select the plug-in or one of its presets in the effects browser. Drag-and-drop the selection over the track to which you would like to add the effect.

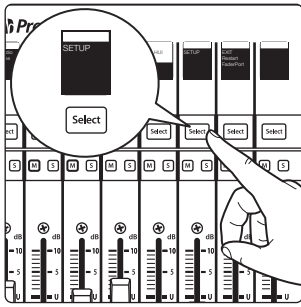


Drag-and-Drop Audio and MIDI Files

Audio and MIDI files can be quickly located, auditioned, and imported into your Song by dragging them from the file browser into the Arrange view. If you drag the file to an empty space, a new track will be created with that file placed at the position to which you dragged it. If you drag the file to an existing track, the file will be placed as a new part of the track.



10 Customizing Your FaderPort

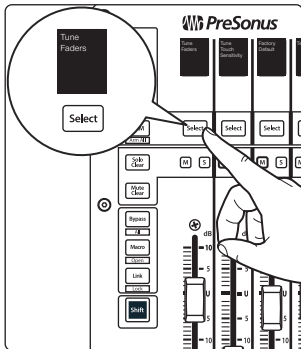


Several useful customization features available for your FaderPort. This allows you adjust fader sensitivity, adjust contrast, and more.

In general, the default settings will work well for more users. If you would like to adjust these settings, press and hold the first two Select buttons while powering on your FaderPort.

Once your FaderPort powers on, press the Select button beneath the “Setup” scribble strip.

10.1 Tune Faders



To adjust your fader speed, press the Select button beneath the Tune Faders screen. This will open the Tune Faders menu.

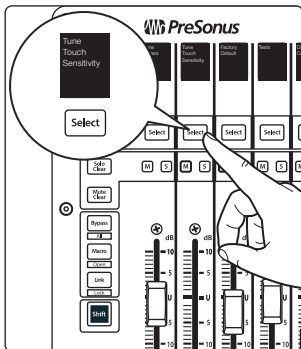


You can adjust the speed at which your faders will follow automation moves from 1 to 7, where 1 is the slowest and 7 is the fastest. By default, this is set to '5'. Slower speeds will provide smoother fader movements. Faster speeds will provide snappier fader recall.

When you are done, press the Select button beneath the Back screen. This will return you to the Setup menu.

Note: Fader Calibration may be necessary before the speed can be adjusted. If this is the case, you must allow the calibration process finish completely.

10.2 Tune Fader Sensitivity



To adjust the touch sensitivity of your faders, press the Select button beneath the Tune Fader Sensitivity screen. This will open the Fader Sensitivity menu.

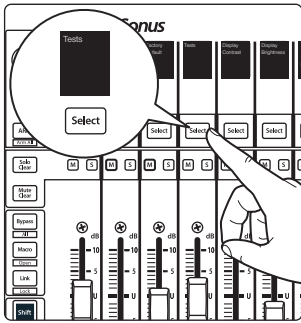


You can adjust how sensitive the touch capacitors in your faders will respond. The sensitivity can be adjusted from 1 to 7, where 1 is the least sensitive and 7 is the most. By default, this is set to '3'. If you find that the faders do not immediately react to your touch, increase the sensitivity. If you find the faders to be too sensitive, lower it.

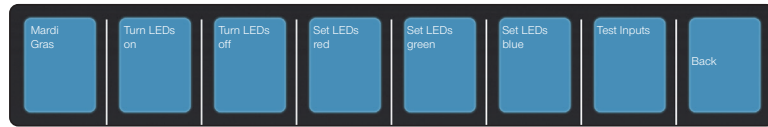
Please note: in some environments, increasing the sensitive too high may result in false touches, so it is recommended to make incremental adjustments.

When you are done, press the Select button beneath the Back screen. This will return you to the Setup menu.

10.3 Test Modes

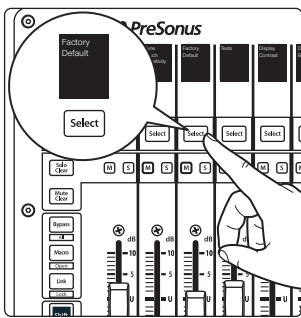


Your FaderPort is equipped with multiple test modes to verify electrical functionality of all its components. Press the Select button below the Test screen to access these modes.



- **Mardi Gras.** This test mode will cycle through all the LEDs and Fader movements. Press the last Select button to exit.
- **Turn LEDs on.** This test mode turns on all LEDs, allowing you to verify their functionality. Press the Select button below "Turn LEDs off" to end the test.
- **Set LEDs (red, green, blue).** These test modes allow you to test the color functionality of the RGB LEDs.
- **Test Inputs.** Use this mode to test the faders and encoders.

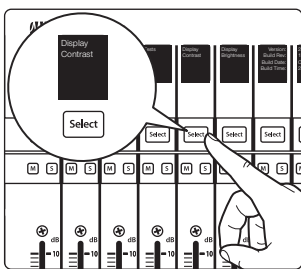
10.4 Factory Default



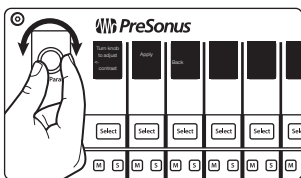
In the unlikely event that a firmware update fails, restoring your FaderPort to Factory Default will allow you to restore your unit to its factory firmware version.

10.5 Display Options

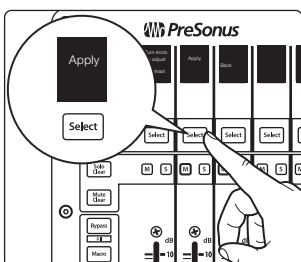
Contrast



Press the Select button below "Display Contrast" to set the contrast of the scribble strip displays to your desired setting.

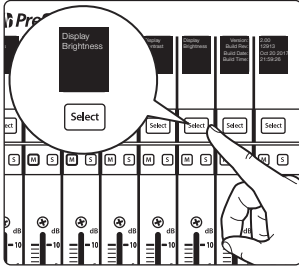


Turn the Pan/Param encoder on the left until the desired setting has been reached.



Press the Select button below the Apply screen to set.

Brightness



Press the Select button below “Display Brightness” to adjust your Scribble Strip display settings. You can choose between Dim, Medium, and Bright.

11 Appendix

11.1 Troubleshooting

Session Navigator and Scribble Strips not responsive. Make sure you are in the correct mode for your DAW application and that the FaderPort is configured as the correct device type in your DAW:

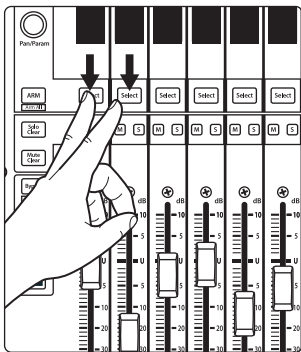
DAW	Recommended Mode
Ableton Live	MCU (Ableton)
Apple Logic	MCU (Logic)
Avid Pro Tools	HUI
Cakewalk Sonar	MCU (Sonar)
MOTU Digital Performer	MCU (Logic)
PreSonus Studio One	Studio One
Steinberg Cubase	MCU (Cubase)
Steinberg Nuendo	MCU (Cubase)
Others	<p>MCU (Logic): If "FaderPort 16" or "FaderPort 8" is not listed as a supported device in your DAW, you will need to configure it as follows:</p> <p>FaderPort 16: Either as (2) Mackie Control devices or (1) Mackie Control and (1) Mackie Control Extender depending on the application.</p> <p>FaderPort 8: (1) Mackie Control device.</p> <p>OR</p> <p>Studio One: If "FaderPort 16" or "FaderPort 8" is listed as a supported device by your DAW, it has been integrated into your application using the Studio One native protocol.</p>

Track Names Not Updating. If you connect your FaderPort while a session is already open, the track names on the scribble strips may not update immediately. To update, bank left or right.

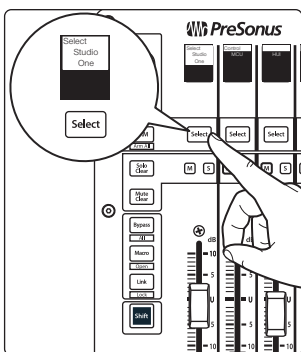
FaderPort 16: First Eight Faders Mirrors Second Eight Faders. If your FaderPort 16 fader back splits into two identical banks of eight, it has not been configured properly. In general, the first FaderPort 16 MIDI port should be used for the first Mackie Control or HUI device and the second FaderPort 16 MIDI port should be used for the Mackie Control Extender or second Mackie Control / HUI device. The exception is Cubase. Please review the instructions in this manual.

11.2 FaderPort Multichannel Controller MIDI Protocol

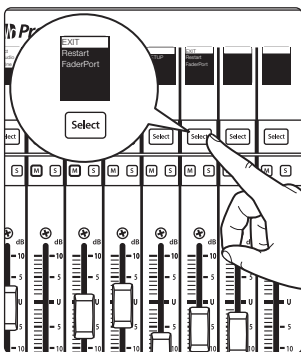
Studio One operation mode employs a native MIDI protocol. For advanced users or developers, this MIDI protocol can be used to access the FaderPort user interface elements directly.



To access this mode, press the first two Select buttons while powering on the FaderPort.



Press the Select button to enable Studio One mode.



Once you have selected your mode, press the Select button below the "Exit" screen to reboot your FaderPort. Once you have set the operation mode, your FaderPort will retain this information.

11.2.1 SysEx

SysEx	
SysEx header <SysExHdr>	F0 00 01 06 02
Manufacturer ID	00 01 06
FaderPort 16 Device ID	16
FaderPort 8 Device ID	02

11.2.2 Faders

Use MIDI pitch bend message to transmit fader moves and receive fader positions.

FaderPort 8. Channels 0-7 are used to address faders 1-8 respectively.

FaderPort 16. Channels 0-15 are used to address faders 1-16 respectively.

Faders	
Received	Ex, ll, hh
Transmitted	Ex, ll, hh
Fader index	x
Low 7 bits	ll
High 7 bits	hh

11.2.3 Encoders

Use CC messages to transmit increment and decrement values.

Transmitted endless rotary encoder delta values:

Pan / Param Encoder: **B0, 10, xx**

Session Navigator Encoder: **B0, 3C, xx**

xx delta value bit (Bit 6 = direction, Bits 0-5 = number of steps)

11.2.4 Buttons and LEDs

Buttons use Note On/Off messages to transmit the pressed and released state on channel 0.

LEDs use Note On/Off messages to receive the on, off and flashing state on channel 0.

Transmitted	
Button press and release message	90, id, ss
ID	See ID Table
ss	State (Release: 00, Pressed, 7F)
Received (On, Off, Flashing)	
LED on / off message	90, id, ss
ID	See ID Table
ss	State (Off: 00, On: 7F, Flashing: 01)
Received (Color)	
LED Color message	MIDI channel 1-3 is used to set the RGB values of a LED color with 7-bit resolution per color
Red	91, id, cc
Green	92, id, cc
Blue	93, id, cc
ID	See ID table
cc	7-bit color value

Button and LED ID Tables:

General Controls (Left Side)		
Button Label	ID (Hex)	LED Type
Pan / Param Push Encoder	20	n/a
Arm	00	LED
Solo Clear	01	LED
Mute Clear	02	LED
Bypass	03	RGB
Macro	04	RGB
Link	05	RGB
Shift (Left)	06	LED

Channel Strip Controls		
Button Label	ID (Hex)	LED Type
Solo 1	08	LED
Solo 2	09	LED
Solo 3	0A	LED
Solo 4	0B	LED
Solo 5	0C	LED
Solo 6	0D	LED
Solo 7	0E	LED
Solo 8	0F	LED
Solo 9 (FaderPort 16)	50	LED
Solo 10 (FaderPort 16)	51	LED
Solo 11 (FaderPort 16)	52	LED
Solo 12 (FaderPort 16)	58	LED
Solo 13 (FaderPort 16)	54	LED
Solo 14 (FaderPort 16)	55	LED
Solo 15 (FaderPort 16)	59	LED
Solo 16 (FaderPort 16)	57	LED
Mute 1	10	LED
Mute 2	11	LED
Mute 3	12	LED
Mute 4	13	LED
Mute 5	14	LED
Mute 6	15	LED
Mute 7	16	LED
Mute 8	17	LED
Mute 9 (FaderPort 16)	78	LED
Mute 10 (FaderPort 16)	79	LED
Mute 11 (FaderPort 16)	7A	LED
Mute 12 (FaderPort 16)	7B	LED
Mute 13 (FaderPort 16)	7C	LED
Mute 14 (FaderPort 16)	7D	LED
Mute 15 (FaderPort 16)	7E	LED
Mute 16 (FaderPort 16)	7F	LED

Channel Strip Controls		
Button Label	ID (Hex)	LED Type
Select 1	18	RGB
Select 2	19	RGB
Select 3	1A	RGB
Select 4	1B	RGB
Select 5	1C	RGB
Select 6	1D	RGB
Select 7	1E	RGB
Select 8	1F	RGB
Select 9 (FaderPort 16)	07	RGB
Select 10 (FaderPort 16)	21	RGB
Select 11 (FaderPort 16)	22	RGB
Select 12 (FaderPort 16)	23	RGB
Select 13 (FaderPort 16)	24	RGB
Select 14 (FaderPort 16)	25	RGB
Select 15 (FaderPort 16)	26	RGB
Select 16 (FaderPort 16)	27	RGB
Fader Touch 1	68	n/a
Fader Touch 2	69	n/a
Fader Touch 3	6A	n/a
Fader Touch 4	6B	n/a
Fader Touch 5	6C	n/a
Fader Touch 6	6D	n/a
Fader Touch 7	6E	n/a
Fader Touch 8	6F	n/a
Fader Touch 9 (FaderPort 16)	70	n/a
Fader Touch 10 (FaderPort 16)	71	n/a
Fader Touch 11 (FaderPort 16)	72	n/a
Fader Touch 12 (FaderPort 16)	73	n/a
Fader Touch 13 (FaderPort 16)	74	n/a
Fader Touch 14 (FaderPort 16)	75	n/a
Fader Touch 15 (FaderPort 16)	76	n/a
Fader Touch 16 (FaderPort 16)	77	n/a

Fader Mode Buttons		
Button Label	ID (Hex)	LED Type
Track	28	LED
Edit Plugins	2B	LED
Send	29	LED
Pan	2A	LED

Session Navigator		
Button Label	ID (Hex)	LED Type
Prev	2E	LED
Session Navigator Push Encoder	53	n/a
Next	2F	LED
Channel	36	LED
Zoom	37	LED
Scroll	38	LED
Bank	39	LED
Master	3A	LED
Click	3B	LED
Section	3C	LED
Marker	3D	LED

Mix Management		
Button Label	ID (Hex)	LED Type
Audio	3E	RGB
VI	3F	RGB
Bus	40	RGB
VCA	41	RGB
All	42	RGB
Shift (Right)	46	LED

Automation		
Button Label	ID (Hex)	LED Type
Read	4A	RGB
Write	4B	RGB
Trim	4C	RGB
Touch	4D	RGB
Latch	4E	RGB
Off	4F	RGB

Transport		
Button Label	ID (Hex)	LED Type
Loop	56	LED
Rewind	5B	LED
Fast Forward	5C	LED
Stop	5D	LED
Play	5E	LED
Record	5F	LED
Footswitch	66	n/a

11.2.5 Value Bar

Received:

B0, 3i, vv

i Value bar number (0 thru 7)

vv value (0 to 7F)

B0, 3i, mm

i Value bar number offset by 8 (8 thru 15)

mm Value bar mode (0: normal, 1: bipolar, 2: fill, 3: spread, 4: off)

B0, 4i, vv

i Value bar number (0 thru 7) for strip 9-16

vv value (0 to 7F)

B0, 4i, mm

i Value bar number (8 thru 15) for strip 9-16

mm Value bar mode (0: normal, 1: bipolar, 2: fill, 3: spread, 4: off)

11.2.6 Scribble Strips

Addressing: Scribble Strip ID and Scribble Strip Line via SysEx:

Received:

Set Mode:

<SysExHdr> 13, xx, mn F7

xx = scribble strip id 0-7

m = bits **6 to 4**

- **bit 4 = 0** - do not clear the strings/ redraw old strings in new mode

[<SysExHdr> 0x**13**, 0x01, 0x05 F7] - Changes display mode to **Mode 5** and redraw old strings in new mode

- **bit 4 = 1** - clear strings / new strings will be send and drawn in new mode

[<SysExHdr> 0x**13**, 0x01, 0x12 F7] - Changes display mode to **Mode 2** and clears the old strings for Scribble Strip #1)

- **bit 5** = unused

- **bit 6** = unused

n = mode number (bits **3 to 0**)

Mode	N Value	Scribble Strip Mode	Description	Example
0	0x00	Default Mode	3 lines of text* and value bar: Line 0 : Small min. 7 chars Line 1 : Small min. 7 chars Line 2 : Large min. 4 chars	
1	0x01	Alternative Default Mode	3 lines of text* and value bar: Line 0 : Large min. 4 chars Line 1 : Small min. 7 chars Line 2 : Small min. 7 chars	
2	0x02	Small Text Mode	4 lines of text* and value bar: Line 0 : Small min. 7 chars Line 1 : Small min. 7 chars Line 2 : Small min. 7 chars Line 3 : Small min. 7 chars	
3	0x03	Large Text Mode	2 lines of text* and value bar: Line 0 : Large min. 4 chars Line 1 : Large min. 4 chars	
4	0x04	Large Text Metering Mode	2 lines of text*, meters and value bar: Line 0 : Large min. 2 chars Line 1 : Large min. 2 chars	
5	0x05	Default Text Metering Mode	3 lines of text*, meters and value bar: Line 0 : Small min. 4 chars Line 1 : Small min. 4 chars Line 2 : Large min. 2 chars	
6	0x06	Mixed Text Mode	3 lines of text*, and value bar: Line 0 : Small min. 7 chars Line 1 : Large min. 4 chars Line 2 : Small min. 7 chars	
7	0x07	Alternative Text Metering Mode	3 lines of text*, meters and value bar: Line 0 : Large min. 2 chars Line 1 : Small min. 4 chars Line 2 : Small min. 4 chars	
8	0x08	Mixed Text Metering Mode	3 lines of text*, meters and value bar: Line 0 : Small min. 4 chars Line 1 : Large min. 2 chars Line 2 : Small min. 4 chars	
9	0x09	Menu Mode	Line 0 : Small min. 7 chars Line 1 : Small min. 7 chars Line 2 : Small min. 7 chars Line 3 : Small min. 7 chars Line 4 : Small min. 7 chars Line 5 : Small min. 7 chars Line 6 : Small min. 7 chars	

*The font is not mono-spaced, so the number of characters per line can vary.

Send String:

Send the text messages to the scribble strips.

Received:

<SysExHdr> **12, xx, yy, zz, tx,tx,tx,... F7**

xx = scribble strip id 0-7

yy = line number 0-3

zz = alignment flag and normal/inverted

- flag bits **xxxxiaa** (**0000000** = centered normal)
- **aa** = alignment (center: 0, left: 1, right: 2)
- **i** = inverted
- **x** = not used

tx = text in **ASCII** format

Metering

Channel Pressure message (After Touch) for the peak and reduction meters.

Received:

Dn, vv

n meter address

- 0-7 peak meters 1-8
- 9-15 reduction meters 1-8

vv meter value (0...7F)

Peak meters decay automatically.

Reduction meters are set by the host only (no automatic decay).

Program Change message for the peak and reduction meters 9-16.

Cn, vv

n meter address

- 0-7 peak meters strip 9-16
- 9-15 reduction meters strip 9-16

vv meter value (0...7F)

Peak meters decay automatically. 100% decay in 1.8 seconds.

Reduction meters are set by the host only (no automatic decay).

Running Status

The following message is should be sent **every second**:

A0,00,00

Added bonus: PreSonus' previously Top Secret recipe for...

Redfish Couvillion

Ingredients:

- ¼ C Vegetable oil
- ¼ C flour
- 1 onion diced
- 1 clove garlic minced
- 1 green pepper diced
- 3 celery stalks diced
- 1 14oz can diced tomatoes
- 1 bottle light beer
- 2 bay leaves
- 1 tsp thyme
- 2 lbs Redfish fillets

Cooking Instructions:

1. In a heavy saucepan or large skillet, heat oil on medium high and slowly add flour a tablespoon at a time to create a roux. Continue cooking the roux until it begins to brown, creating a dark blond roux.
2. Add garlic, onions, green pepper, and celery to roux.
3. Sauté vegetables for 3-5 minutes until they start to soften.
4. Add tomatoes, bay leaves, thyme, and redfish. Cook for several minutes.
5. Slowly add beer and bring to a low boil.
6. Reduce heat and simmer uncovered for 30-45 minutes until redfish and vegetables are completely cooked, stirring occasionally. Break up redfish into bite size chunks and stir in. Add pepper or hot sauce to taste. Do not cover.
7. Serve over rice

Serves 6-8

While not one of Southeast Louisiana's more famous dishes, Redfish Couvillion is a favorite way to serve our favorite Gulf fish. Also known as Reds or Red Drum, Redfish is not only fun to catch, it's also delicious!

FaderPort™ 16 and FaderPort 8 Multichannel Production Controllers

Owner's Manual



18011 Grand Bay Ct. • Baton Rouge,
Louisiana 70809 USA • 1-225-216-7887
www.presonus.com

Part# 70-5200065-E