



**AMT**<sup>®</sup>  
**Tweeter**

**2013**



## Einführung Mundorf HiFi AMT 2013

### Introduction of Mundorf HiFi AMT 2013

Mundorf bietet heute zweifellos die weltweit größte Auswahl an Air Motion Transformer (AMT) für die unterschiedlichsten Anwendungen und Anforderungen an. In der vorliegenden Broschüre werden die aktuellen Modelle der Mundorf HiFi-, Monitor- und Hochwirkungsgrad-AMT vorgestellt. Allen gemeinsam ist das exzellente Impulsverhalten und die ungewöhnliche Verzerrungsarmut der Musikwiedergabe! Die Unterschiede liegen vor allem im Übertragungsbereich, dem Schalldruck und dem Bündelungsverhalten.

Die Modelle der AMT19- und AMT21-Reihe sind für den Einsatz in 3+Wege-Kombinationen entwickelt, die Baureihen AMT23 und AMT25 eignen sich bestens für 2+Wege-Anwendungen.

Die Varianten des AMT164U (patentierte U-Shape Polplatten) bieten sich aufgrund ihrer starken vertikalen Bündelung, ihrer hohen Empfindlichkeit und den sensationell niedrigen Klirrwerte für Monitorsysteme und HiFi-Anwendungen allerhöchster Ansprüche an.

Die als Dipol-AMT entwickelten Modelle wurden in zwei Linien optimiert. Zum einen Dipol-Varianten, die für einen freistehenden Montage optimiert wurden. Sie ähneln durch diese Montage (es wird eine Skizze hierzu von Daniel gefertigt) in ihrem Impulsverhalten einem in offener Schallwand montierten Tiefmitteltöner. Für derartige Konzepte optimal geeignet sind AMT17D1.1, AMT 17D2.1, AMT 23D1.1, AMT25D1.1 und AMT27D1.1

Eine weitere Reihe an Dipolen ist für die Montage in nach hinten offenen Schallwänden optimiert: AMT23D6.1, AMT25D6.1, AMT27D6.1

Der Dipol AMT17D hat sich außerdem hervorragend als ergänzender Superhochtöner bewährt, der sich mittels mitgelieferter Komponenten akustisch und mechanisch leicht mit jeder Lautsprecherbox kombinieren lässt und freistehend auf ihr platziert werden kann.

Der AMT29 ist mit seiner hohen Empfindlichkeit von 100 dB, seiner außergewöhnlichen Linearität und seinem ausgedehnten Frequenzbereich die Synthese aus Mundorf HiFi AMT und MUNDORF PRO AMT.

Informationen zu unserem AMT PRO Programm finden Sie unter [www.mundorf.com](http://www.mundorf.com)

Mundorf offers undoubtedly today's largest selection of Air Motion Transformer (AMT) worldwide. Its different lines were developed for certain applications and requirements. The present brochure introduces the current lines of Mundorf HiFi AMT tweeters, of which all have two superior key properties in common: An excellent transient response and an outstanding low distortion ratio! The differences lie mainly in their frequency ranges, sound pressure levels and dispersion angles.

AMT19 and AMT21 series are designed for use in 3+way-systems, whereas AMT23 and AMT25 models are suitable for 2+way-applications.

The various AMT164U models (patented U-Shape pole plates) recommend themselves for usage in professional but high quality monitor systems as well as for the ultimate Hi-Fi speaker. Their narrow vertical dispersion angle, high sensitivity and low distortion ratio result in both unique precision and musicality.

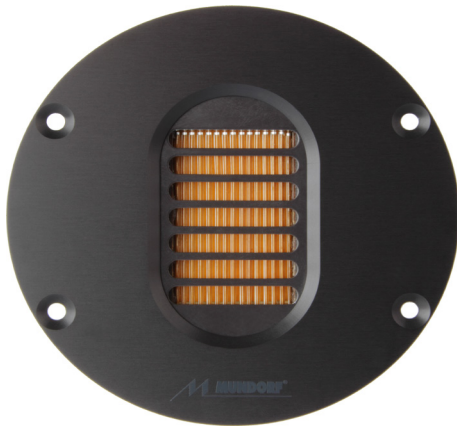
The dipole AMT models come in two lines. One line is optimized for a free-standing installation. Their transient response is very similar to a woofer's transient response when mounted in an open baffle. Ideally suited for such concepts are AMT17D1.1, AMT17D2.1, AMT 23D1.1, AMT25D1.1 and AMT27D1.1.

A second line of dipole AMTs is optimized for matching open-baffles concepts perfectly. Please look up AMT23D6.1, AMT25D6.1, AMT27D6.1

Dipole AMT17D has also proved itself as an outstanding supplementary super tweeter, which can easily be matched with any given speaker. Components for the perfect acoustical adjustment and appropriate stands for free-standing on-top placement are available, too.

Finally, with its high 100dB sensitivity, an exceptional linearity and its extended frequency range, AMT29 represents the perfect synthesis of Mundorf HiFi AMT and Mundorf PRO AMT models.

For more info on Mundorf PRO AMT please visit [www.mundorf.com](http://www.mundorf.com)



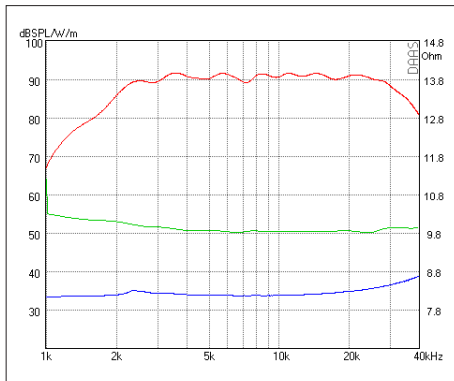
# HiFi SERIE

**AMT19CM1.1-C**  
179 €/pc

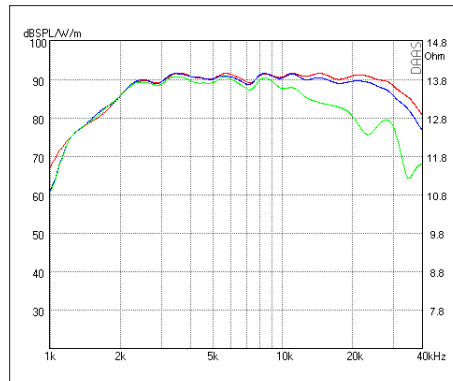
### Special Properties

- High Efficiency
- Extended Bandwidth

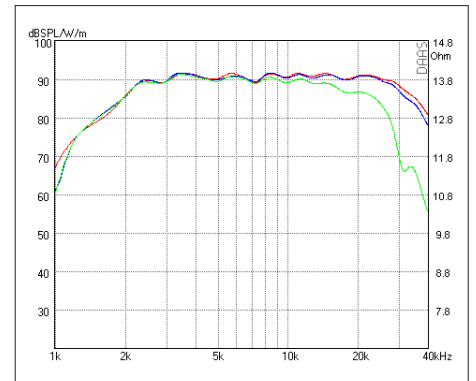
RESISTANCE		NOMINAL 8 OHM	
Zo 8.4 OHM	•	Zmin 8.2 OHM	• RE 8.1 OHM
SENSITIVITY @ 2.83 V			91 dB
FREQUENCY RESPONSE / -6 dB			2000 Hz – 35 kHz
POWER HANDLING			120 W
RESONANCE FREQUENCY / FS			2300 Hz
RECOMMENDED CROSSOVER / 6 dB			3100 Hz
RECOMMENDED CROSSOVER / 12 dB			2800 Hz
DISPERSION HORIZONTAL / 15 kHz / -6 dB			65°
DIAPHRAGM AREA			1260 mm <sup>2</sup>
MAGNET MATERIAL			NEODYMIUM
FACE PLATE			3 mm Anodized Aluminum
TOTAL WEIGHT			340 g
FACE PLATE DIAM.			104 mm



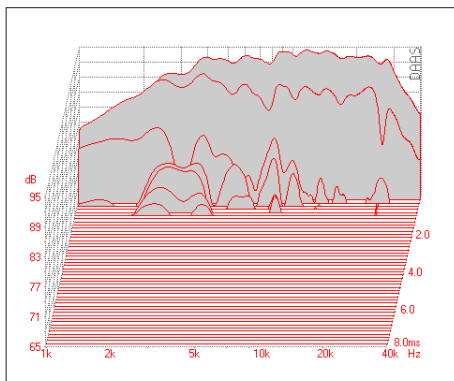
SPL 2.83 V - Phase - Impedance



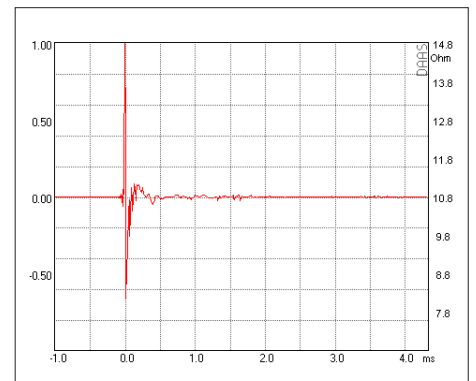
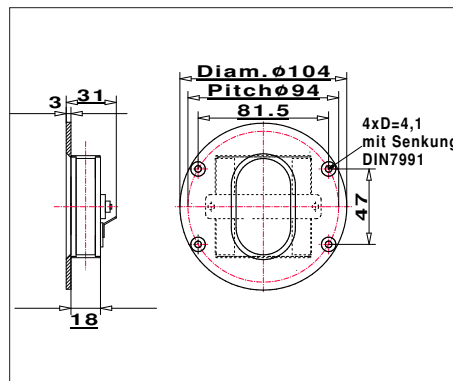
SPL HORIZONTAL 0° - 15° - 30°



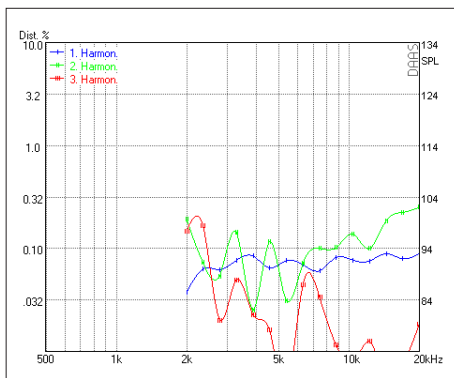
SPL VERTIKAL 0° - 5° - 15°



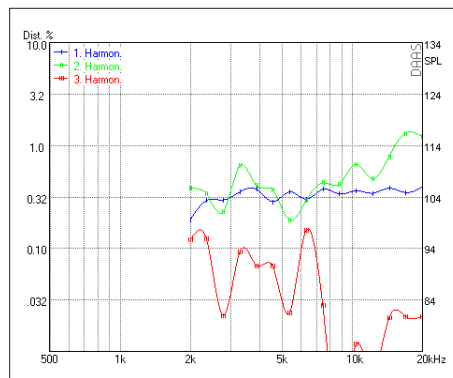
Waterfall



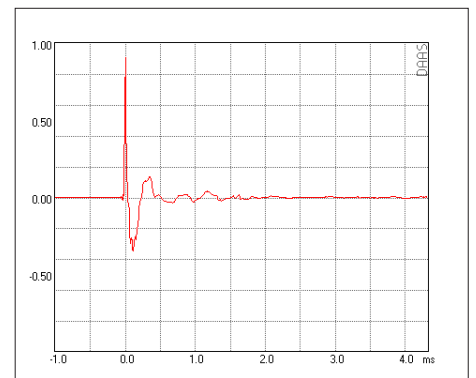
Impulse Response



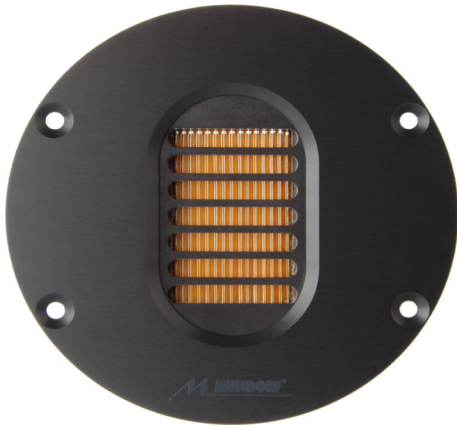
Harmonic Distortion 2.83 V



Harmonic Distortion 105 dB



Step Response



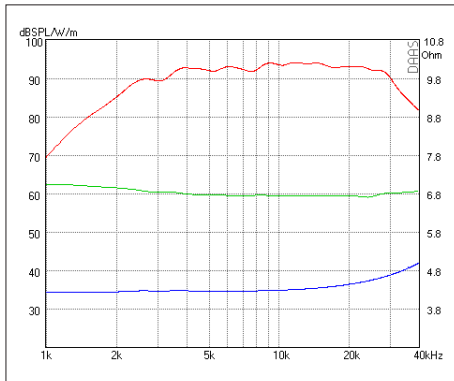
# HiFi SERIE

**AMT19CM2.1-C**  
179 €/pc

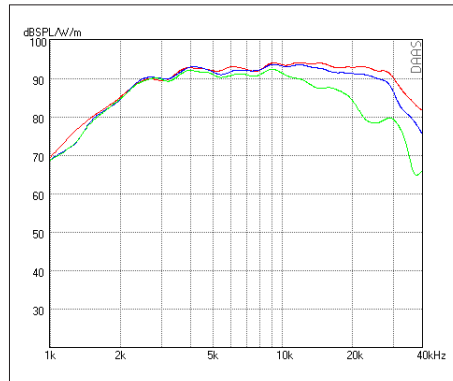
### Special Properties

- High Efficiency
- Extended Bandwidth
- Low Distortion

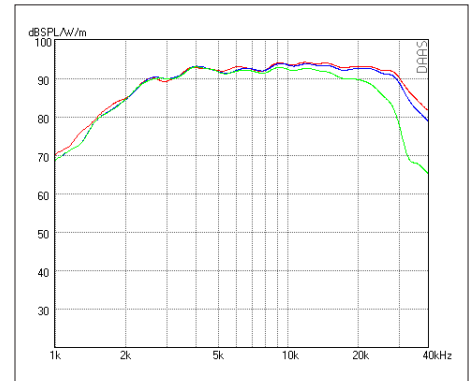
RESISTANCE		NOMINAL 4 OHM	
Zo 4.3 OHM	•	Zmin 4.2 OHM	• RE 4.2 OHM
SENSITIVITY @ 2.83 V		93 dB	
FREQUENCY RESPONSE / -6 dB		2300 Hz – 32 kHz	
POWER HANDLING		120 W	
RESONANCE FREQUENCY / FS		2600 Hz	
RECOMMENDED CROSSOVER / 6 dB		3000 Hz	
RECOMMENDED CROSSOVER / 12 dB		3000 Hz	
DISPERSION HORIZONTAL / 15 kHz / -6 dB		60°	
DIAPHRAGM AREA		1260 mm <sup>2</sup>	
MAGNET MATERIAL		NEODYMIUM	
FACE PLATE		3 mm Anodized Aluminum	
TOTAL WEIGHT		340 g	
FACE PLATE DIAM.		104 mm	



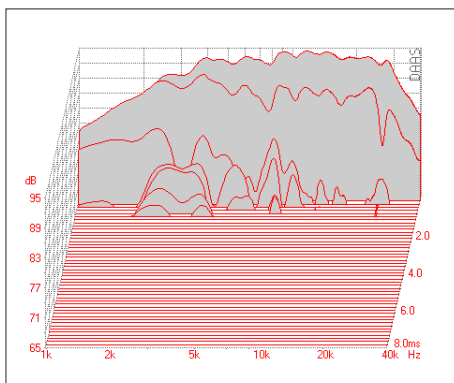
SPL 2.83 V - Phase - Impedance



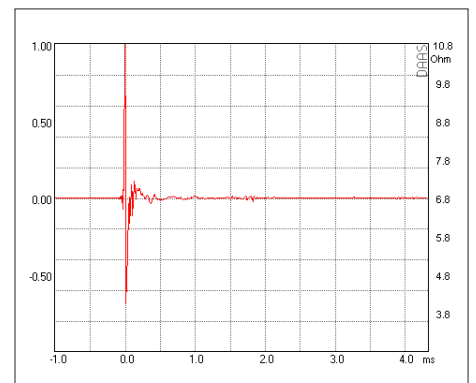
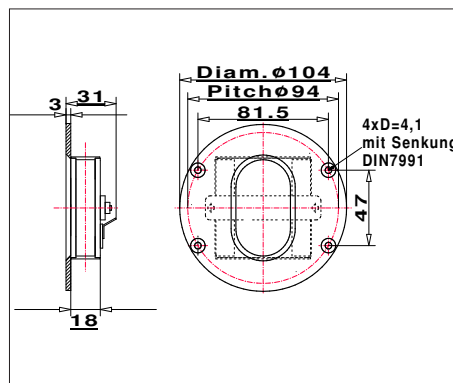
SPL HORIZONTAL 0° - 15° - 30°



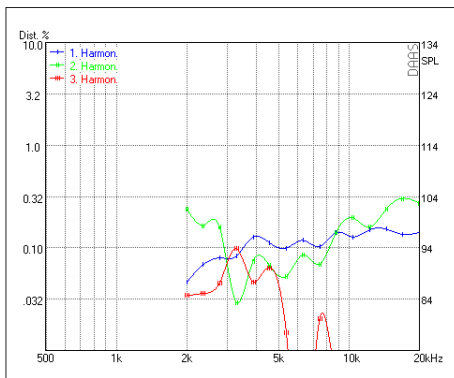
SPL VERTIKAL 0° - 5° - 15°



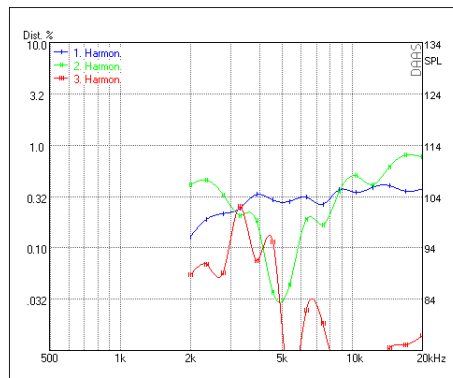
Waterfall



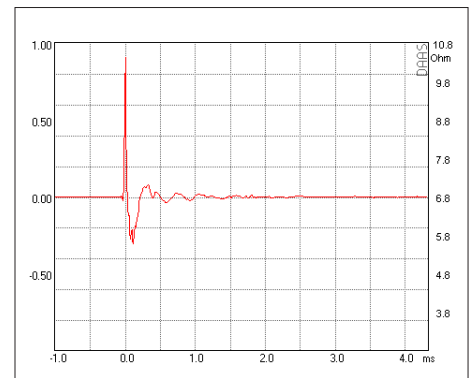
Impulse Response



Harmonic Distortion 2.83 V

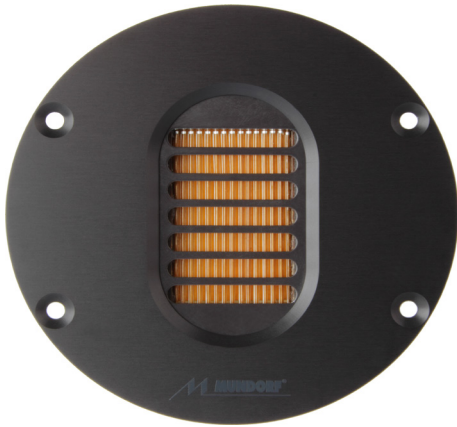


Harmonic Distortion 105 dB



Step Response





# HiFi SERIE

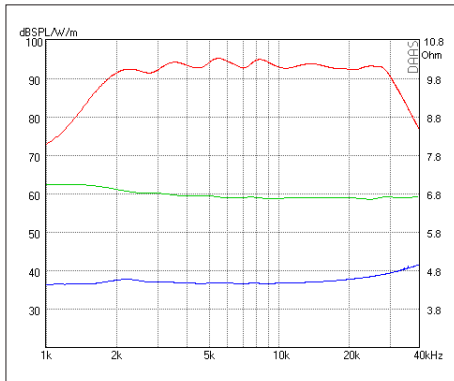
## AMT21CM2.1-C

219 €/pc

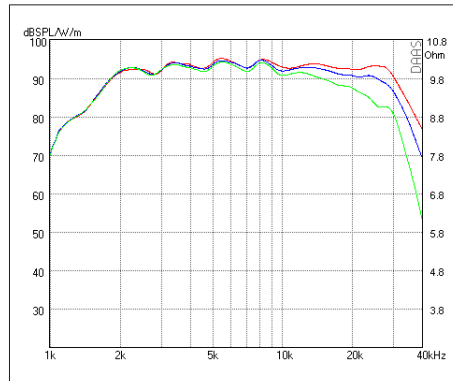
### Special Properties

- High Efficiency
- suitable for 2-Way-Systems

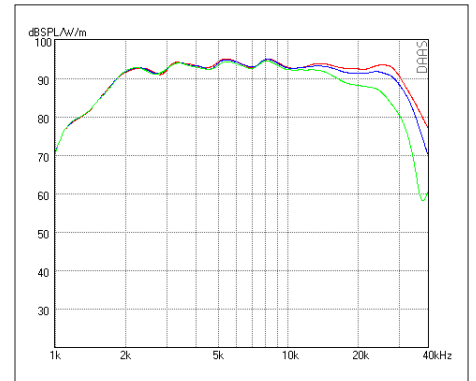
RESISTANCE	NOMINAL 4 OHM
Zo 4.6 OHM • Zmin 4.4 OHM • RE 4.4 OHM	
SENSITIVITY @ 2.83 V	93 dB
FREQUENCY RESPONSE / -6 dB	1700 Hz – 32 kHz
POWER HANDLING	125 W
RESONANCE FREQUENCY / FS	2300 Hz
RECOMMENDED CROSSOVER / 6 dB	3000 Hz
RECOMMENDED CROSSOVER / 12 dB	2500 Hz
DISPERSION HORIZONTAL / 15 kHz / -6 dB	65°
DIAPHRAGM AREA	1260 mm <sup>2</sup>
MAGNET MATERIAL	NEODYMIUM
FACE PLATE	3 mm Anodized Aluminum
TOTAL WEIGHT	430 g
FACE PLATE DIAM.	104 mm



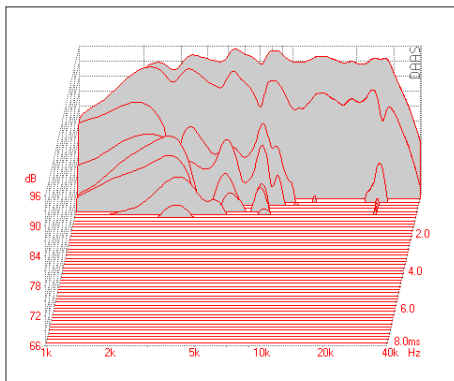
SPL 2.83 V - Phase - Impedance



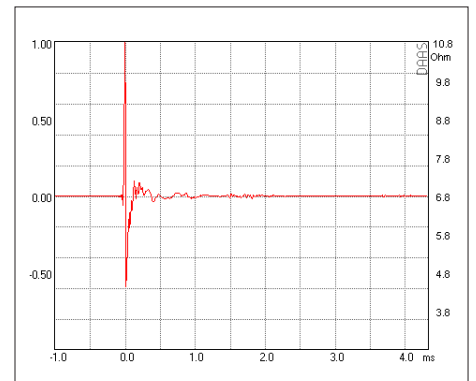
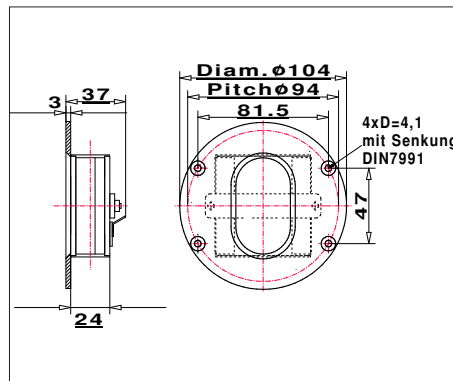
SPL HORIZONTAL 0° - 15° - 30°



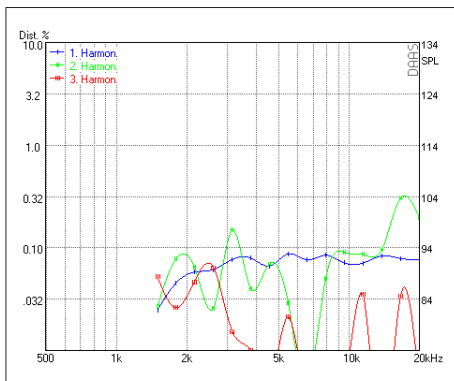
SPL VERTIKAL 0° - 5° - 15°



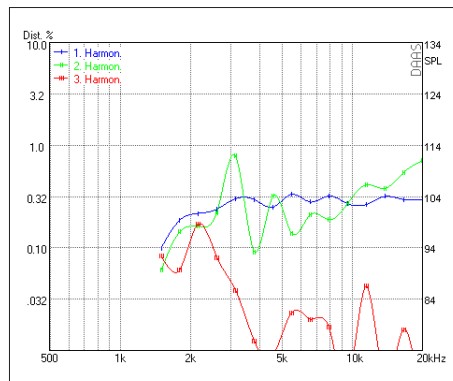
Waterfall



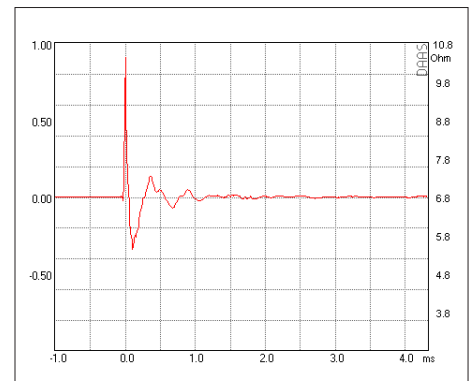
Impulse Response



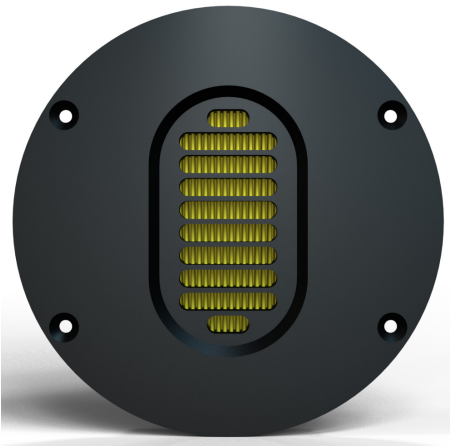
Harmonic Distortion 2.83 V



Harmonic Distortion 105 dB



Step Response



# HiFi SERIE

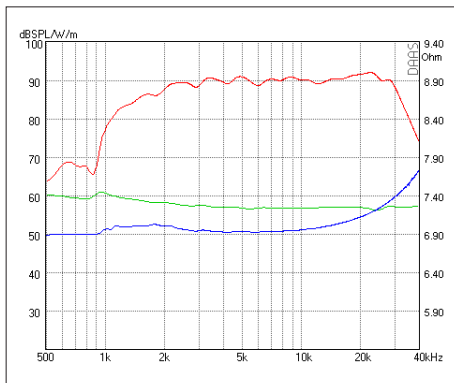
## AMT23CM1.1-C

279 €/pc

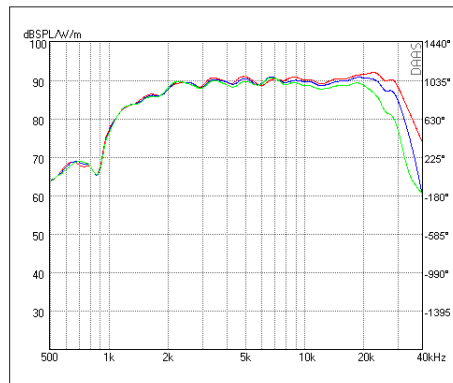
### Special Properties

- Low Crossover Frequency
- Extended Bandwidth

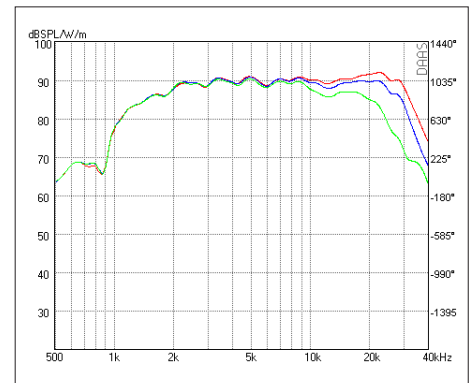
RESISTANCE	NOMINAL 8 OHM
Zo 7.1 OHM • Zmin 6.9 OHM • RE 6.9 OHM	
SENSITIVITY @ 2.83 V	90 dB
FREQUENCY RESPONSE / -6 dB	1300 Hz – 33 kHz
POWER HANDLING	125 W
RESONANCE FREQUENCY / FS	1700 Hz
RECOMMENDED CROSSOVER / 6 dB	2700 Hz
RECOMMENDED CROSSOVER / 12 dB	2200 Hz
DISPERSION HORIZONTAL / 15 kHz / -6 dB	60°
DIAPHRAGM AREA	1755 mm <sup>2</sup>
MAGNET MATERIAL	NEODYMIUM
FACE PLATE	3 mm Anodized Aluminum
TOTAL WEIGHT	440 g
Round Face Plate (-C):	130 mm
Recangular Face Plate (-R):	100 x 100 mm



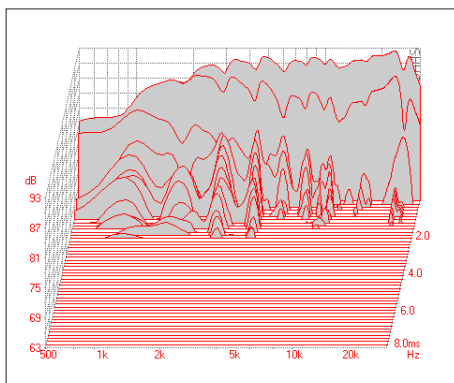
SPL 2.83 V - Phase - Impedance



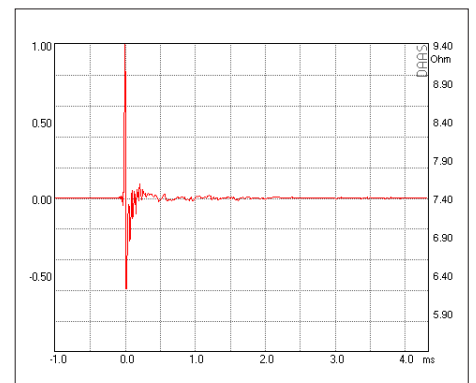
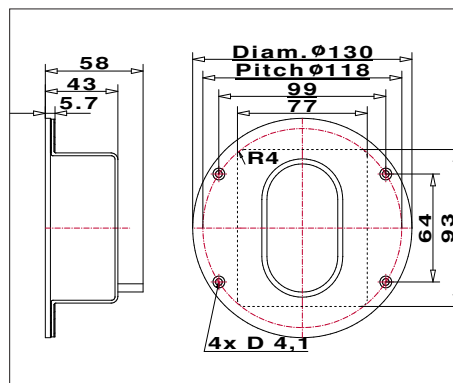
SPL HORIZONTAL 0° - 15° - 30°



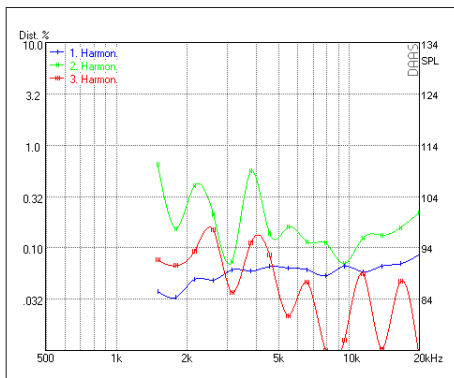
SPL VERTIKAL 0° - 5° - 15°



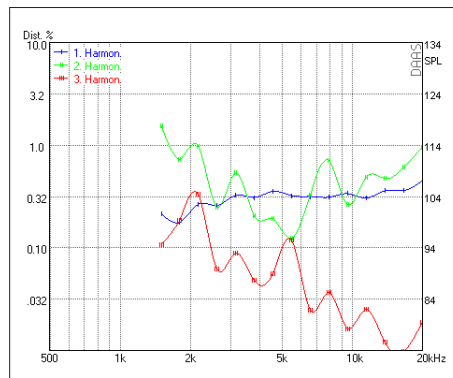
Waterfall



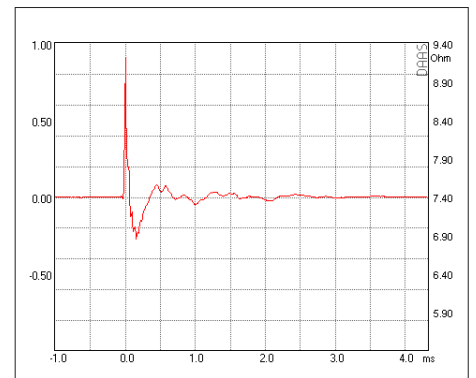
Impulse Response



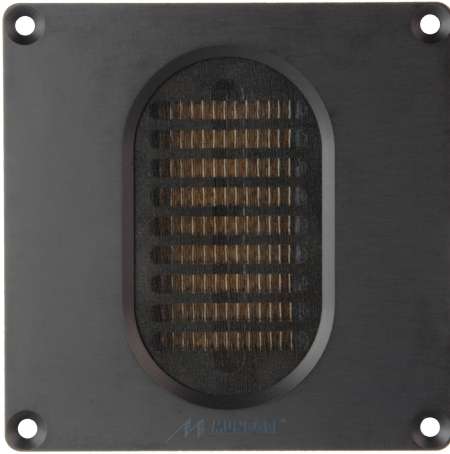
Harmonic Distortion 2.83 V



Harmonic Distortion 105 dB



Step Response



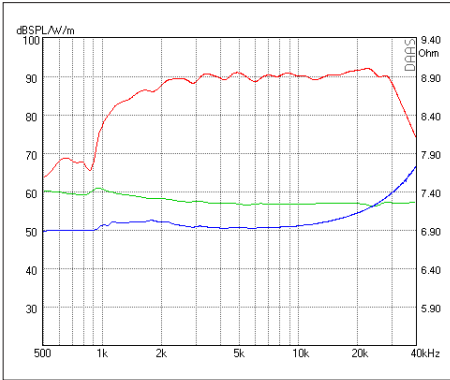
# HiFi SERIE

**AMT23CM1.1-R**  
279 €/pc

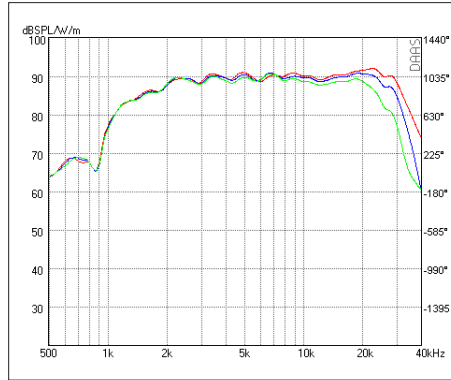
### Special Properties

- Low Crossover Frequency
- Extended Bandwidth

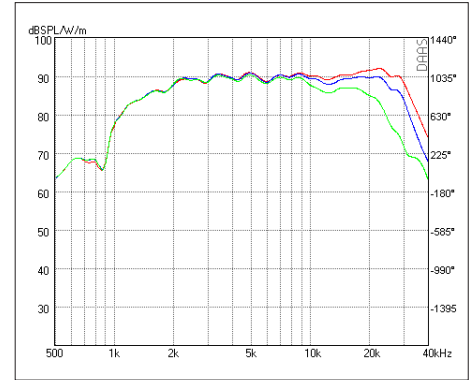
RESISTANCE	NOMINAL 8 OHM
Zo 7.1 OHM • Zmin 6.9 OHM • RE 6.9 OHM	
SENSITIVITY @ 2.83 V	90 dB
FREQUENCY RESPONSE / -6 dB	1300 Hz – 33 kHz
POWER HANDLING	125 W
RESONANCE FREQUENCY / FS	1700 Hz
RECOMMENDED CROSSOVER / 6 dB	2700 Hz
RECOMMENDED CROSSOVER / 12 dB	2200 Hz
DISPERSION HORIZONTAL / 15 kHz / -6 dB	60°
DIAPHRAGM AREA	1755 mm <sup>2</sup>
MAGNET MATERIAL	NEODYMIUM
FACE PLATE	3 mm Anodized Aluminum
TOTAL WEIGHT	440 g
Round Face Plate (-C):	130 mm
Recangular Face Plate (-R):	100 x 100 mm



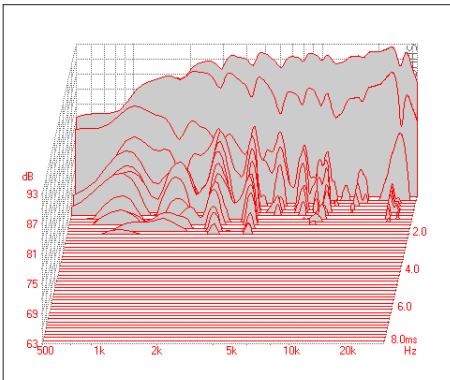
SPL 2.83 V - Phase - Impedance



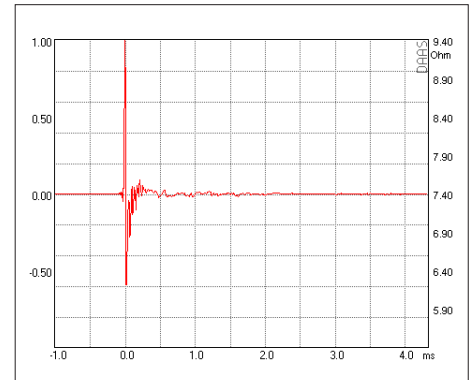
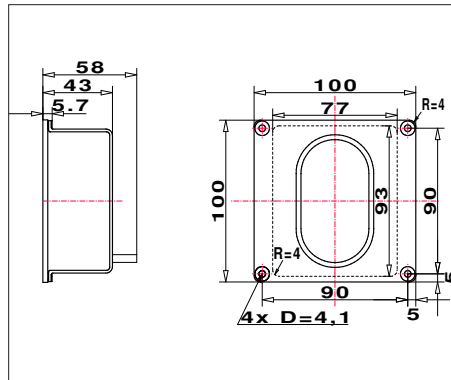
SPL HORIZONTAL 0° - 15° - 30°



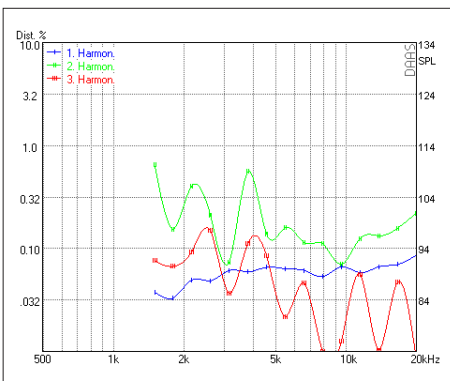
SPL VERTIKAL 0° - 5° - 15°



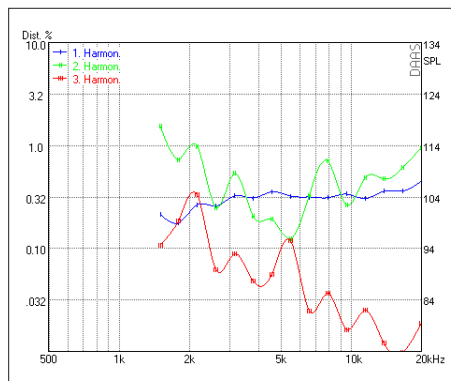
Waterfall



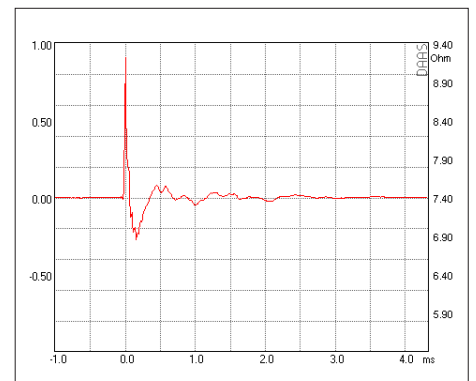
Impulse Response



Harmonic Distortion 2.83 V



Harmonic Distortion 105 dB



Step Response



# HiFi SERIE

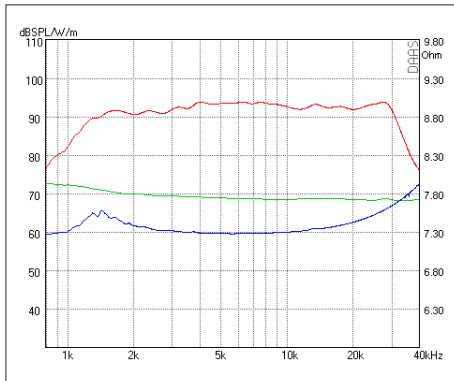
## AMT25CM1.1-R

329 €/pc

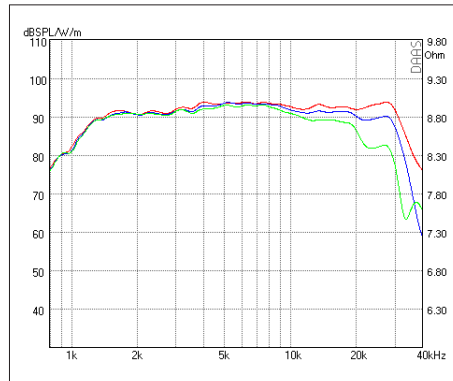
### Special Properties

- Wide Dispersion Angle
- Extended Bandwidth

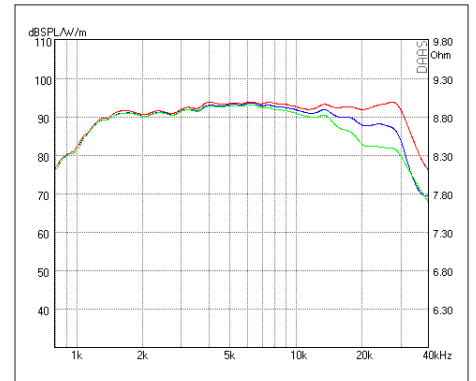
RESISTANCE	NOMINAL 8 OHM	
Zo 7.6 OHM	• Zmin 7.3 OHM	• RE 7.3 OHM
SENSITIVITY @ 2.83 V	93 dB	
FREQUENCY RESPONSE / -6 dB	1200 Hz – 32 kHz	
POWER HANDLING	210 W	
RESONANCE FREQUENCY / FS	1400 Hz	
RECOMMENDED CROSSOVER / 6 dB	2500 Hz	
RECOMMENDED CROSSOVER / 12 dB	2000 Hz	
DISPERSION HORIZONTAL / 15 kHz / -6 dB	70°	
DIAPHRAGM AREA	6464 mm <sup>2</sup>	
MAGNET MATERIAL	NEODYMIUM	
FACE PLATE	3 mm Anodized Aluminum	
TOTAL WEIGHT	520 g	
Round Face Plate (-C):	150 mm	
Rectangular Face Plate (-R):	100 x 130 mm	



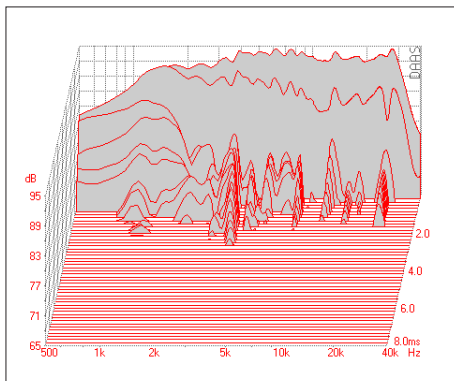
SPL 2.83 V - Phase - Impedance



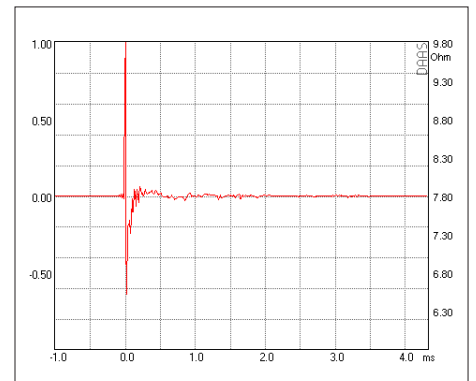
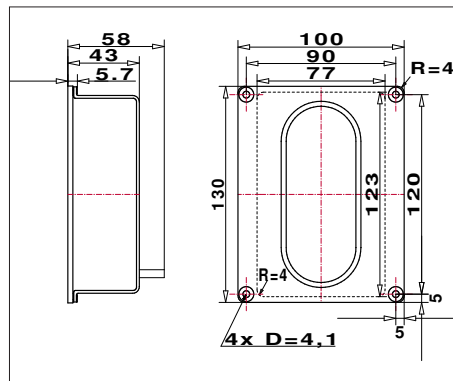
SPL HORIZONTAL 0° - 15° - 30°



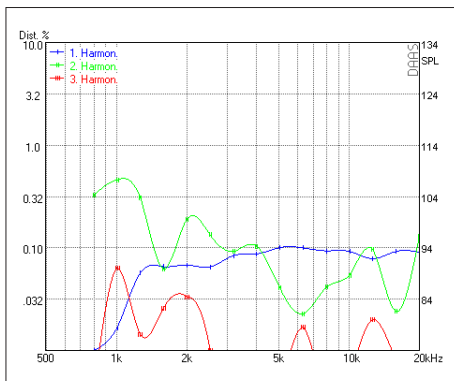
SPL VERTIKAL 0° - 5° - 15°



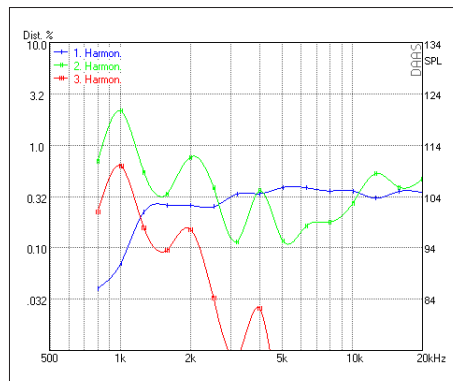
Waterfall



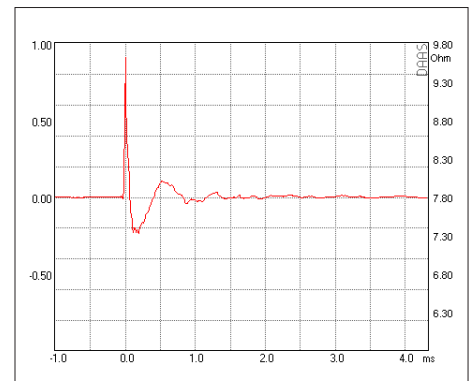
Impulse Response



Harmonic Distortion 2.83 V



Harmonic Distortion 105 dB



Step Response





# HiFi SERIE

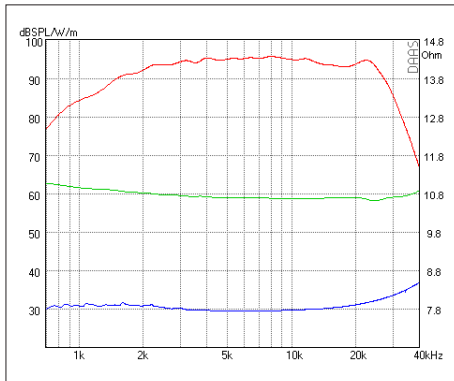
## AMT25CS2.1-R

329 €/pc

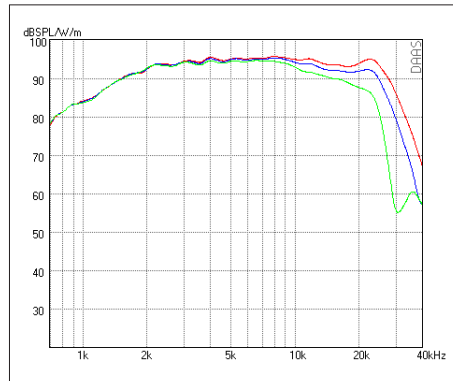
### Special Properties

- High Efficiency
- High SPL-max
- Low Distortion

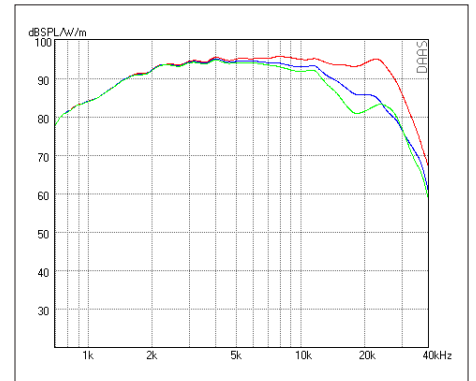
RESISTANCE	NOMINAL 8 OHM
Zo 7.9 OHM • Zmin 7.7 OHM • RE 7.6 OHM	
SENSITIVITY @ 2.83 V	96 dB
FREQUENCY RESPONSE / -6 dB	1600 Hz – 27 kHz
POWER HANDLING	230 W
RESONANCE FREQUENCY / FS	1100 Hz
RECOMMENDED CROSSOVER / 6 dB	2000 Hz
RECOMMENDED CROSSOVER / 12 dB	2000 Hz
DISPERSION HORIZONTAL / 15 kHz / -6 dB	60°
DIAPHRAGM AREA	6464 mm <sup>2</sup>
MAGNET MATERIAL	NEODYMIUM
FACE PLATE	3 mm Anodized Aluminum
TOTAL WEIGHT	650 g
Round Face Plate (-C):	150 mm
Recangular Face Plate (-R):	100 x 130 mm



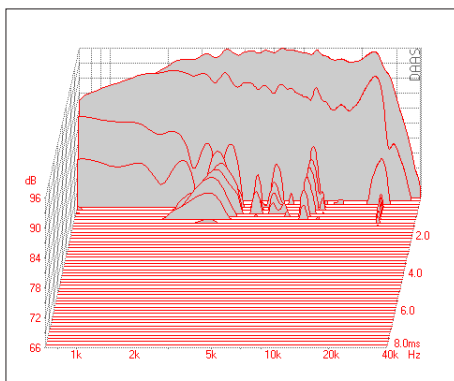
SPL 2.83 V - Phase - Impedance



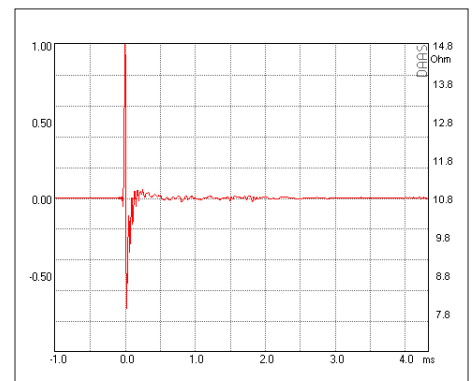
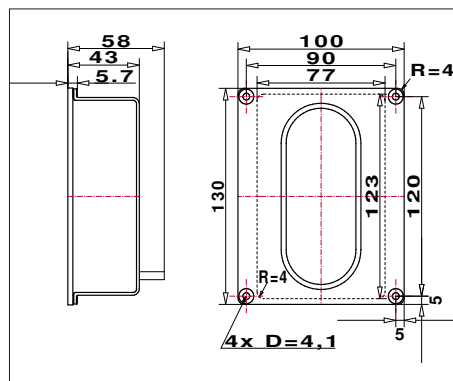
SPL HORIZONTAL 0° - 15° - 30°



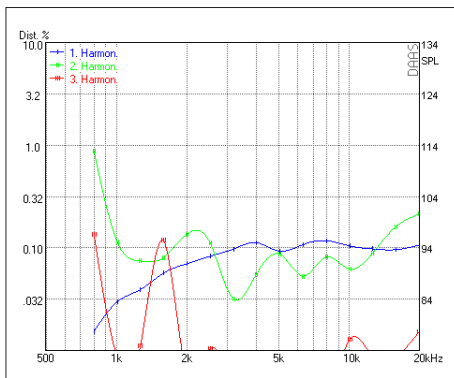
SPL VERTIKAL 0° - 5° - 15°



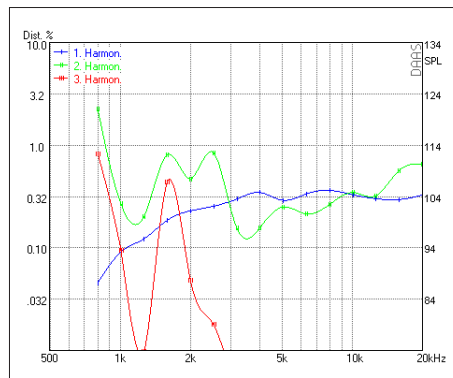
Waterfall



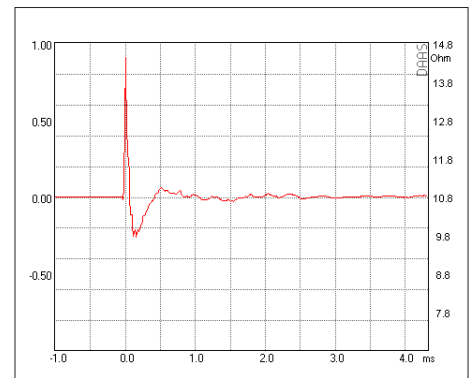
Impulse Response



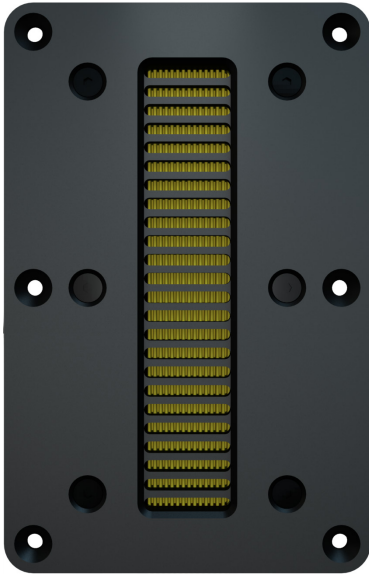
Harmonic Distortion 2.83 V



Harmonic Distortion 105 dB



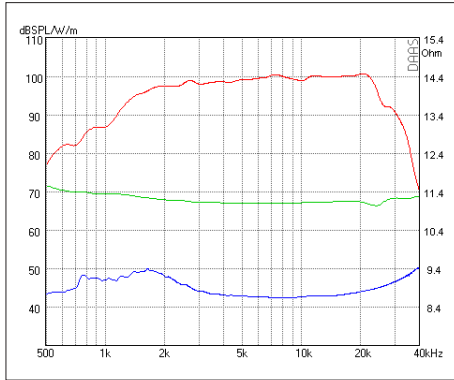
Step Response



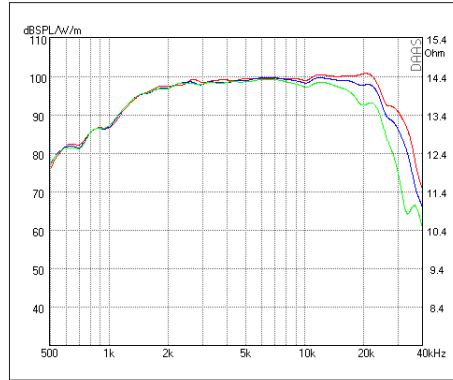
# HiFi SERIE

**AMT29CM1.1-R**  
449 €/pc

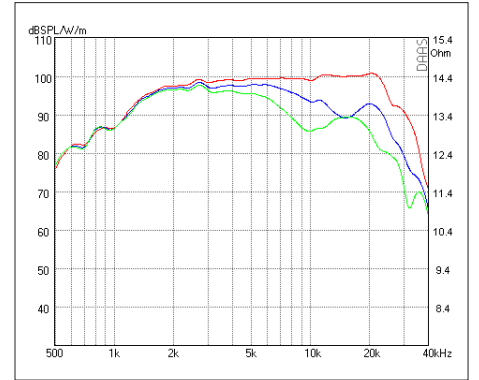
RESISTANCE	NOMINAL 8 OHM
Zo 9.3 OHM • Zmin 8.5 OHM • RE 8.5 OHM	
SENSITIVITY @ 2.83 V	100 dB
FREQUENCY RESPONSE / -6 dB	1350 Hz – 25 kHz
POWER HANDLING	250 W
RESONANCE FREQUENCY / FS	1500 Hz
RECOMMENDED CROSSOVER / 6 dB	2200 Hz
RECOMMENDED CROSSOVER / 12 dB	2000 Hz
DISPERSION HORIZONTAL / 15 kHz / -6 dB	60°
DIAPHRAGM AREA	6515 mm <sup>2</sup>
MAGNET MATERIAL	NEODYMIUM
FACE PLATE	3 mm Anodized Aluminum
TOTAL WEIGHT	300 g
FACE PLATE DIM.	125 x 195 mm



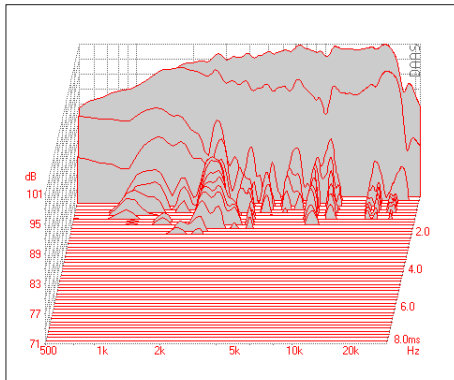
SPL 2.83 V - Phase - Impedance



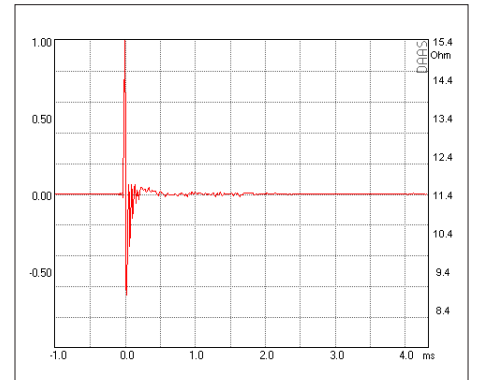
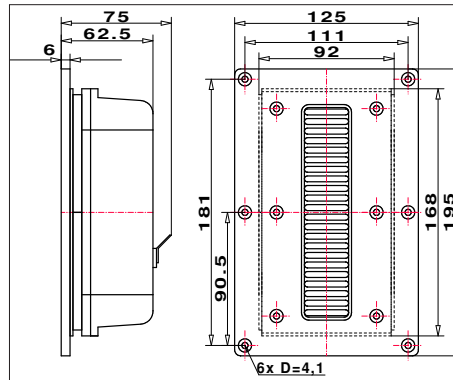
SPL HORIZONTAL 0° - 15° - 30°



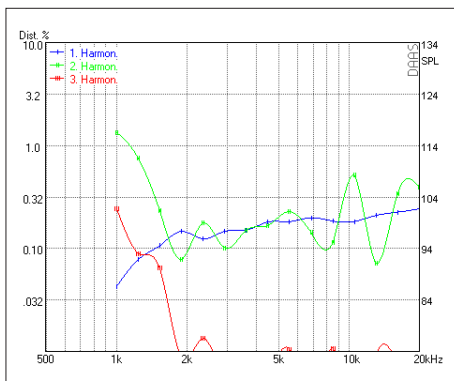
SPL VERTIKAL 0° - 5° - 15°



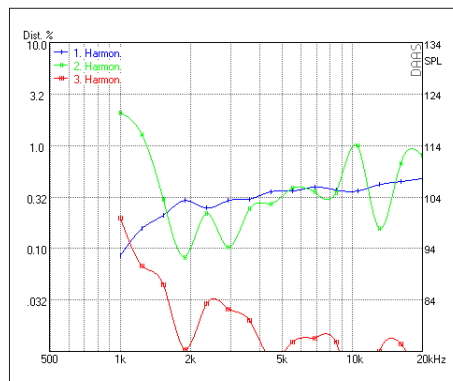
Waterfall



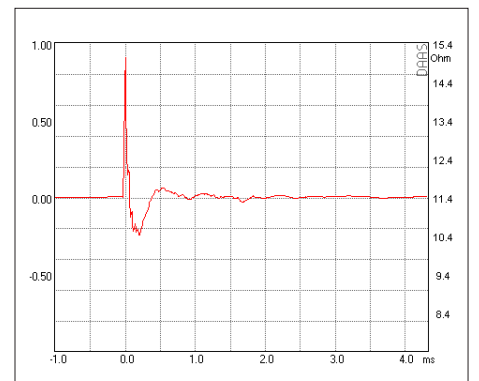
Impulse Response



Harmonic Distortion 2.83 V



Harmonic Distortion 105 dB



Step Response



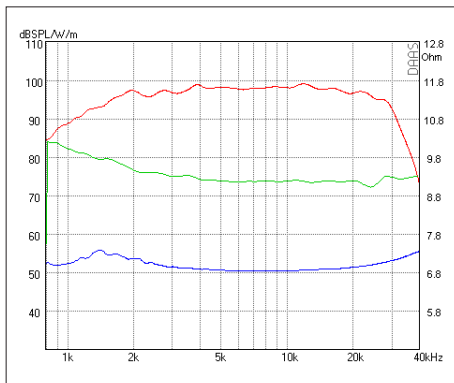
# MONITOR SERIE

**AMT164UM2.3-R**  
549 €/pc

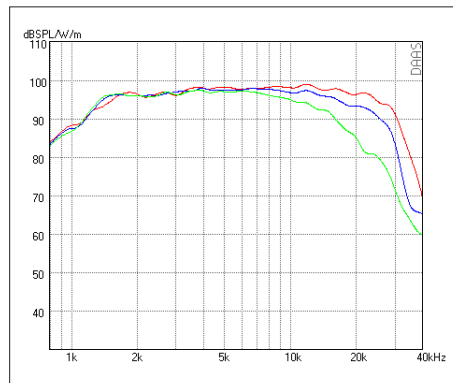
### Special Properties

- Low Distortion
- Extended Bandwidth
- High Efficiency

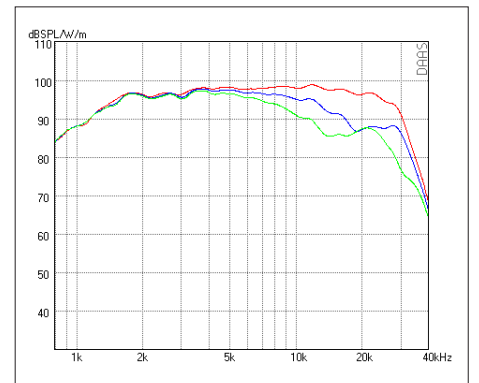
RESISTANCE	NOMINAL 8 OHM		
Zo 9.4 OHM	•	Zmin 8.7 OHM	• RE 8.7 OHM
SENSITIVITY @ 2.83 V	98 dB		
FREQUENCY RESPONSE / -6 dB	1200 Hz - 30 kHz		
POWER HANDLING	250 W		
RESONANCE FREQUENCY / FS	1500 Hz		
RECOMMENDED CROSSOVER / 6 dB	2400 Hz		
RECOMMENDED CROSSOVER / 12 dB	2100 Hz		
DISPERSION HORIZONTAL / 15 kHz / -6 dB	60°		
DIAPHRAGM AREA	6515 mm <sup>2</sup>		
MAGNET MATERIAL	NEODYMIUM		
FACE PLATE	3 mm Anodized Aluminum		
TOTAL WEIGHT	1100 g		
FACE PLATE DIM.	90 x 182 mm		



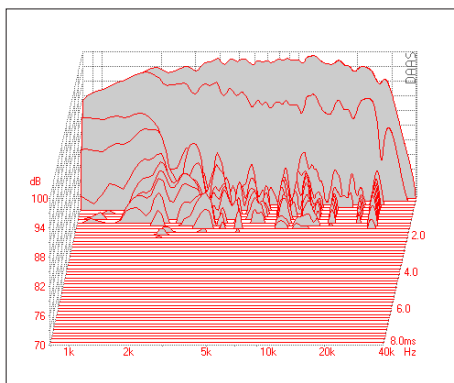
SPL 2.83 V - Phase - Impedance



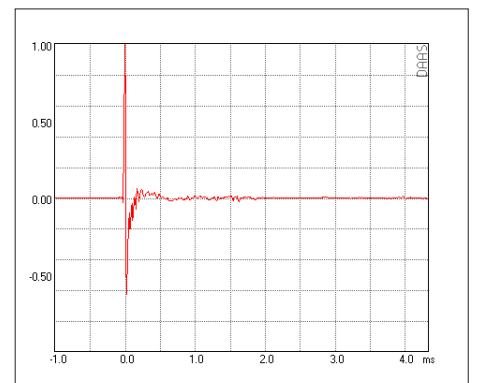
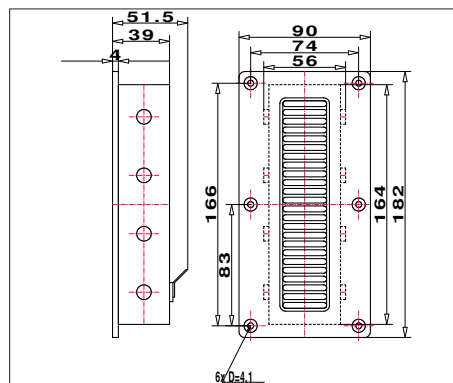
SPL HORIZONTAL 0° - 15° - 30°



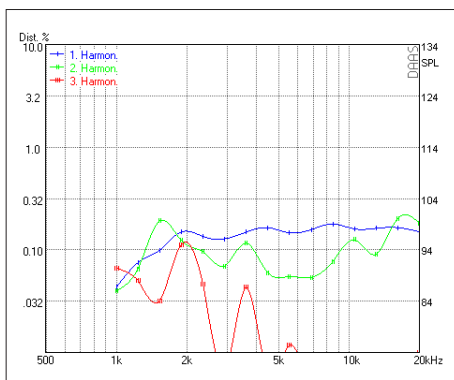
SPL VERTIKAL 0° - 5° - 15°



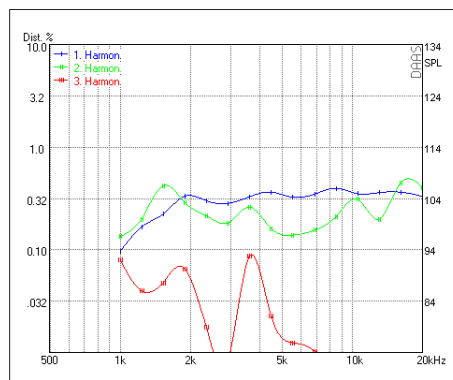
Waterfall



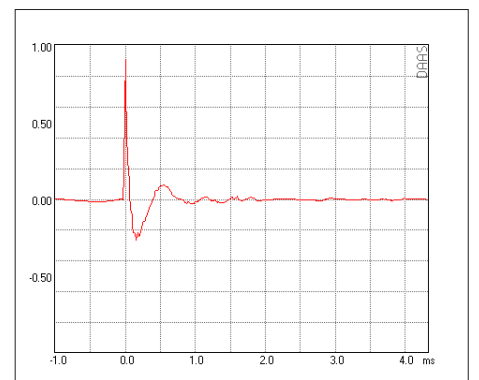
Impulse Response



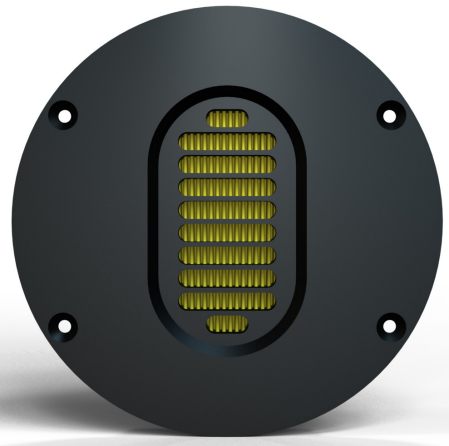
Harmonic Distortion 2.83 V



Harmonic Distortion 105 dB



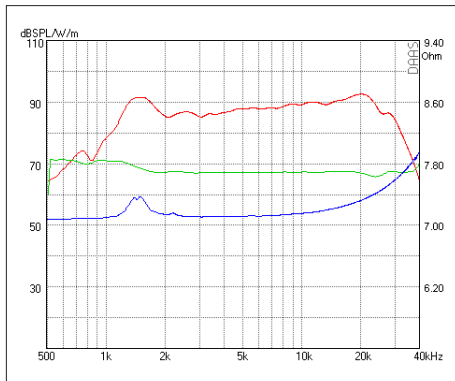
Step Response



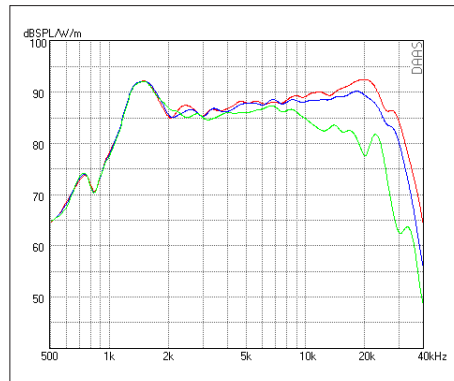
## DIPOL SERIE

**AMT23D6.1-C**  
279 €/pc

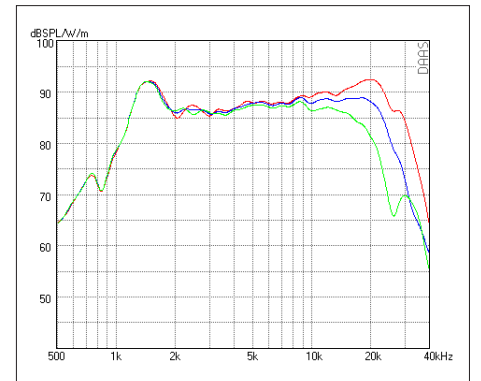
RESISTANCE		NOMINAL 8 OHM
Zo 7.4 OHM	Zmin 6.9 OHM	RE 6.9 OHM
SENSITIVITY @ 2.83 V		88 dB
FREQUENCY RESPONSE / -6 dB		1200 Hz – 30 kHz
POWER HANDLING		92 W
RESONANCE FREQUENCY / FS		1500 Hz
RECOMMENDED CROSSOVER / 6 dB		2600 Hz
RECOMMENDED CROSSOVER / 12 dB		2400 Hz
DISPERSION HORIZONTAL / 15 kHz / -6 dB		60°
DIAPHRAGM AREA		2210 mm <sup>2</sup>
MAGNET MATERIAL		NEODYMIUM
FACE PLATE		3 mm Aluminum
TOTAL WEIGHT		380 g
Round Face Plate (-C):		130 mm
Recangular Face Plate (-R):		100 x 100 mm



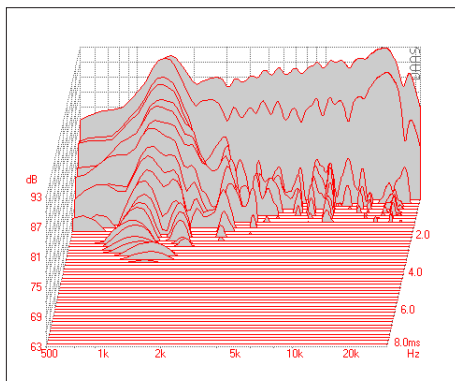
SPL 2.83 V - Phase - Impedance



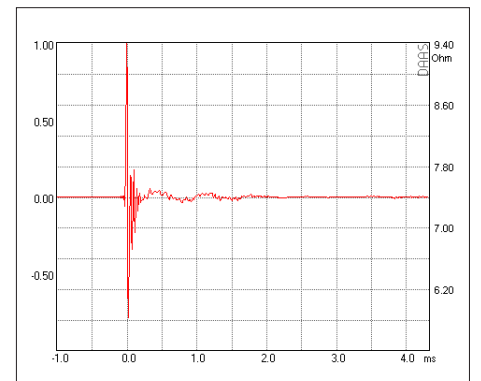
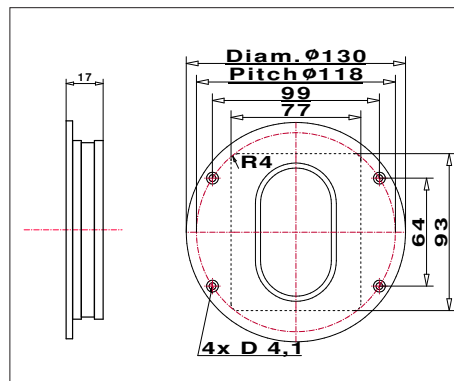
SPL HORIZONTAL 0° - 15° - 30°



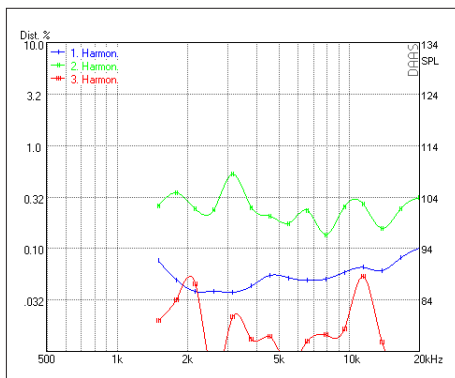
SPL VERTIKAL 0° - 5° - 15°



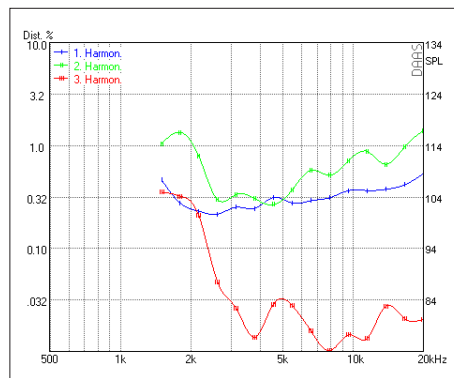
Waterfall



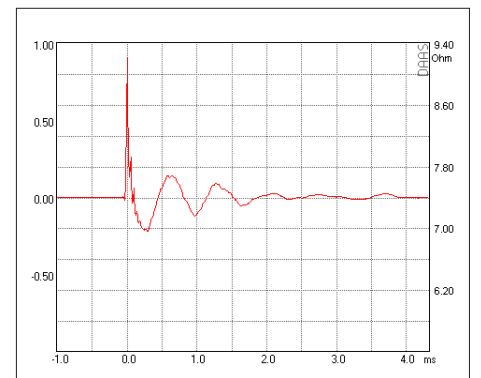
Impulse Response



Harmonic Distortion 2.83 V

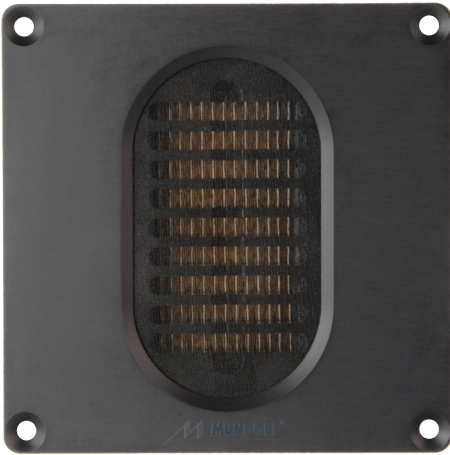


Harmonic Distortion 105 dB



Step Response

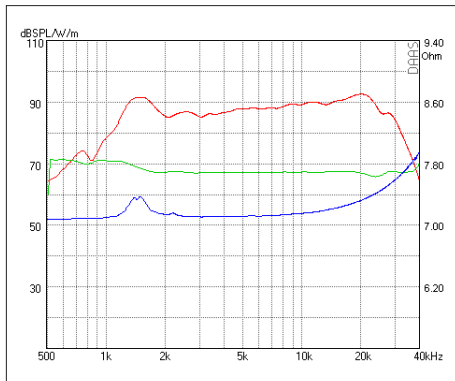




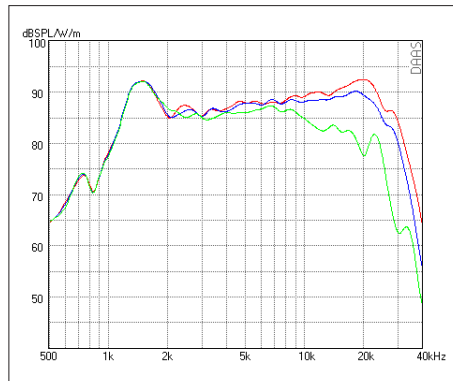
## DIPOL SERIE

**AMT23D6.1-R**  
279 €/pc

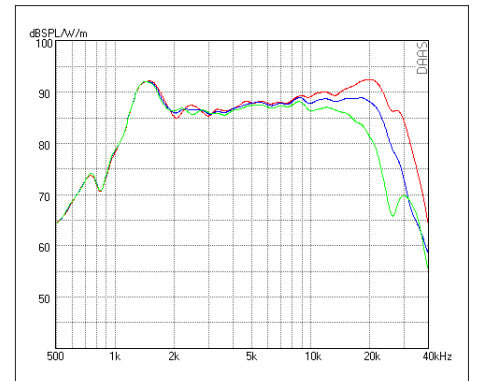
RESISTANCE	NOMINAL 8 OHM
Zo 7.4 OHM • Zmin 6.9 OHM • RE 6.9 OHM	
SENSITIVITY @ 2.83 V	88 dB
FREQUENCY RESPONSE / -6 dB	1200 Hz – 30 kHz
POWER HANDLING	92 W
RESONANCE FREQUENCY / FS	1500 Hz
RECOMMENDED CROSSOVER / 6 dB	2600 Hz
RECOMMENDED CROSSOVER / 12 dB	2400 Hz
DISPERSION HORIZONTAL / 15 kHz / -6 dB	60°
DIAPHRAGM AREA	2210 mm <sup>2</sup>
MAGNET MATERIAL	NEODYMIUM
FACE PLATE	3 mm Aluminum
TOTAL WEIGHT	380 g
Round Face Plate (-C):	130 mm
Rectangular Face Plate (-R):	100 x 100 mm



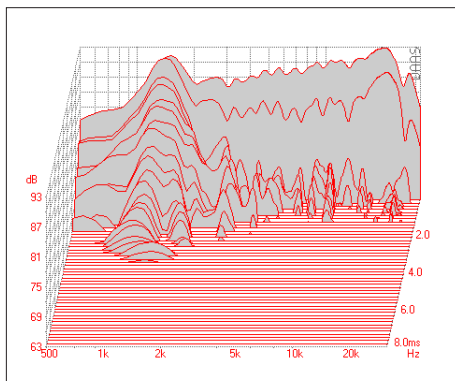
SPL 2.83 V - Phase - Impedance



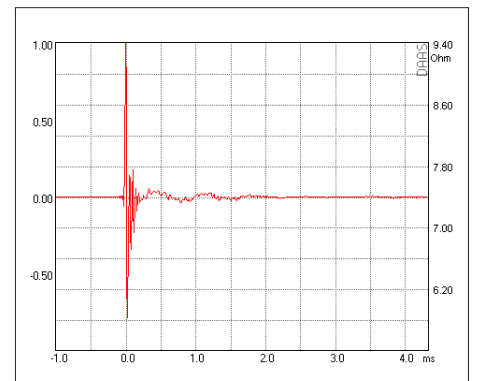
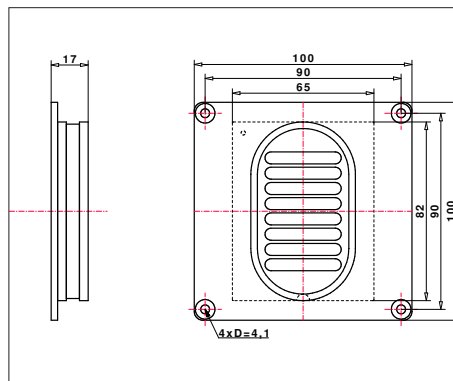
SPL HORIZONTAL 0° - 15° - 30°



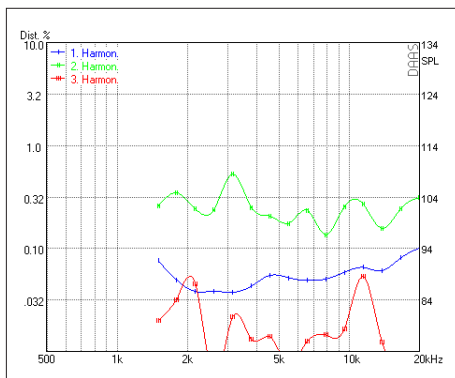
SPL VERTIKAL 0° - 5° - 15°



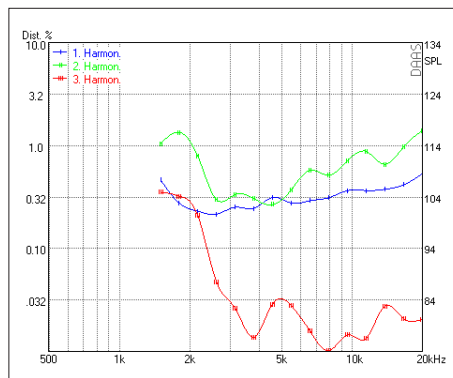
Waterfall



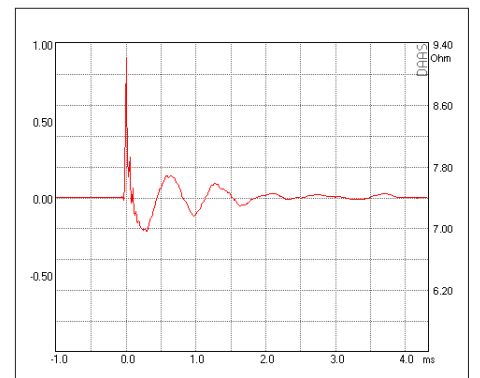
Impulse Response



Harmonic Distortion 2.83 V



Harmonic Distortion 105 dB



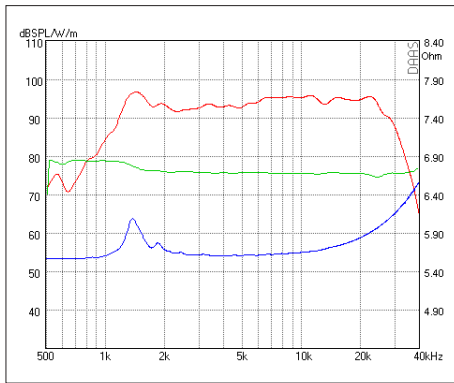
Step Response



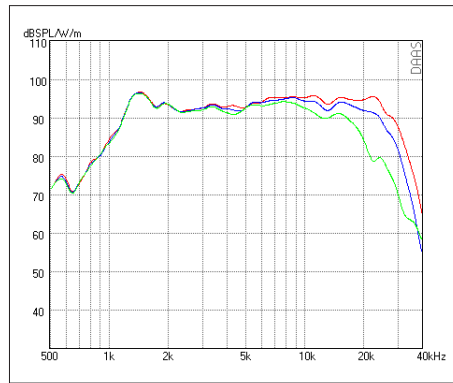
# DIPOL SERIE

**AMT25D6.1-R**  
329 €/pc

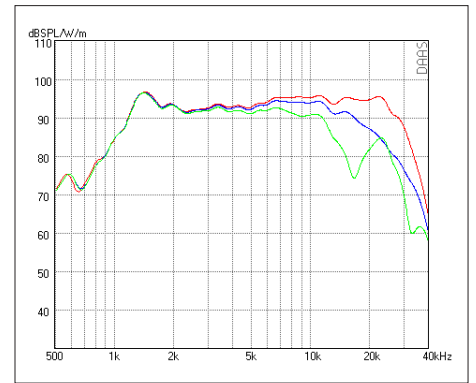
RESISTANCE	NOMINAL 6 OHM
Zo 6.1 OHM • Zmin 5.6 OHM • RE 5.6 OHM	
SENSITIVITY @ 2.83 V	93 dB
FREQUENCY RESPONSE / -6 dB	1100 Hz – 30 kHz
POWER HANDLING	135 W
RESONANCE FREQUENCY / FS	1400 Hz
RECOMMENDED CROSSOVER / 6 dB	2500 Hz
RECOMMENDED CROSSOVER / 12 dB	2300 Hz
DISPERSION HORIZONTAL / 15 kHz / -6 dB	60°
DIAPHRAGM AREA	6464 mm <sup>2</sup>
MAGNET MATERIAL	NEODYMIUM
FACE PLATE	3 mm Aluminum
TOTAL WEIGHT	560 g
Round Face Plate (-C):	150 mm
Recangular Face Plate (-R):	100 x 130 mm



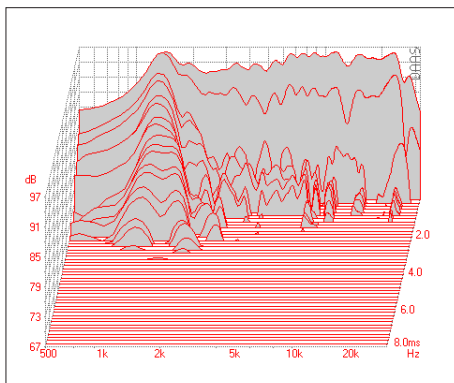
SPL 2.83 V - Phase - Impedance



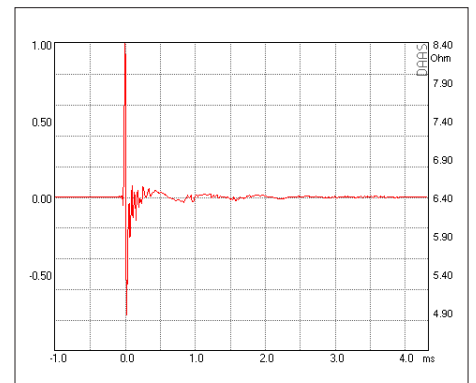
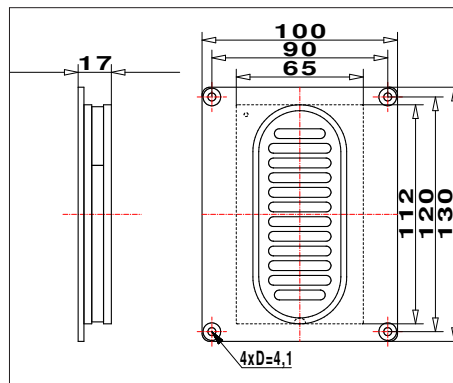
SPL HORIZONTAL 0° - 15° - 30°



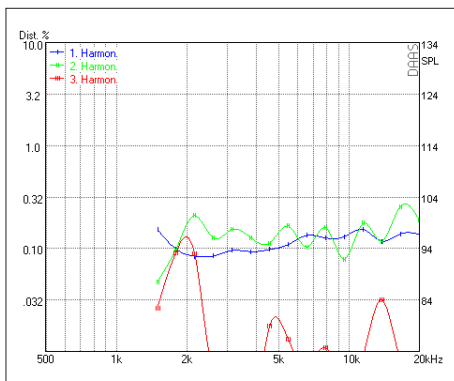
SPL VERTIKAL 0° - 5° - 15°



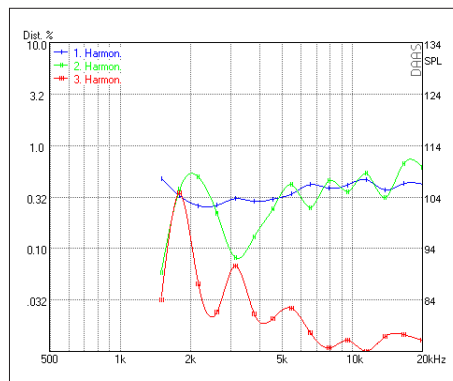
Waterfall



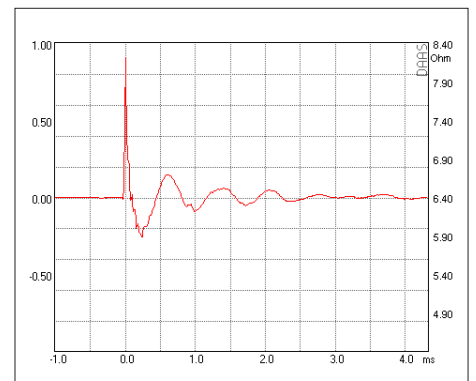
Impulse Response



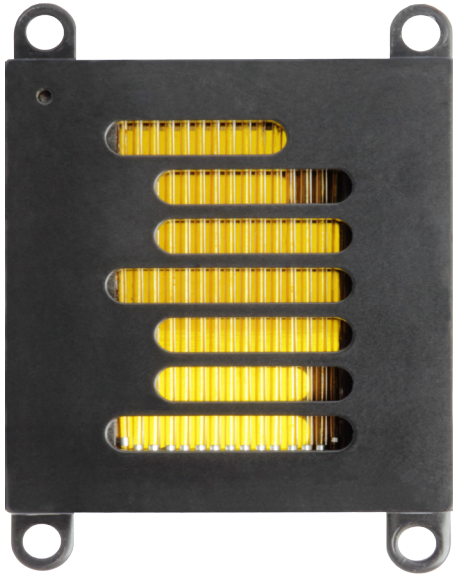
Harmonic Distortion 2.83 V



Harmonic Distortion 105 dB



Step Response



## DIPOL SERIE

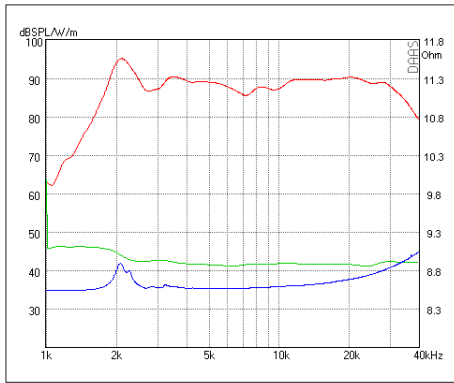
### AMT17D1.1

149 €/pc

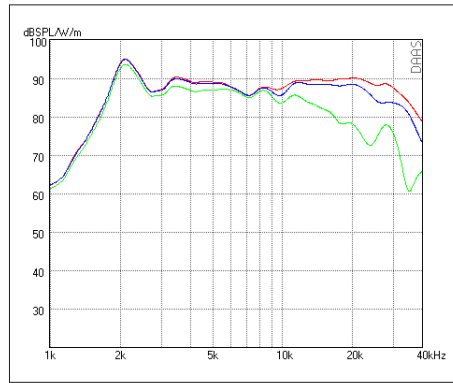
#### Special Properties

- Low Distortion
- Extended Bandwidth

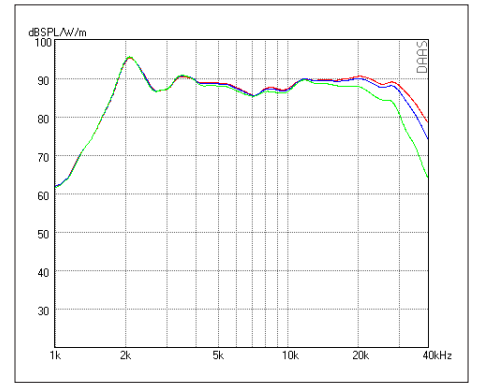
RESISTANCE	NOMINAL 8 OHM		
Zo 8.9 OHM	•	Zmin 8.6 OHM	• RE 8.6 OHM
SENSITIVITY @ 2.83 V	89 dB		
FREQUENCY RESPONSE / -6 dB	1200Hz - 29 kHz		
POWER HANDLING	60 W		
RESONANCE FREQUENCY / FS	2100 Hz		
RECOMMENDED CROSSOVER / 6 dB	6000 Hz		
RECOMMENDED CROSSOVER / 12 dB	4500 Hz		
DISPERSION HORIZONTAL / 15 kHz / -6 dB	40°		
DIAPHRAGM AREA	1260 mm <sup>2</sup>		
MAGNET MATERIAL	NEODYMIUM		
FACE PLATE	non		
TOTAL WEIGHT	160 g		
FACE PLATE DIM.	55 x 60 mm		



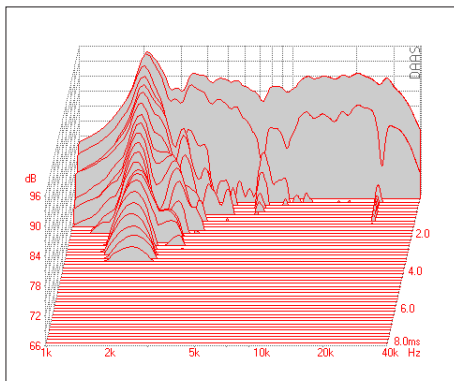
SPL 2.83 V - Phase - Impedance



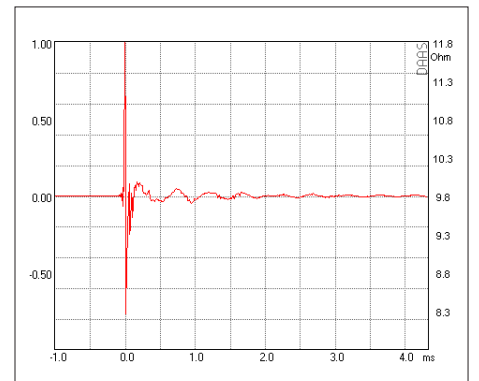
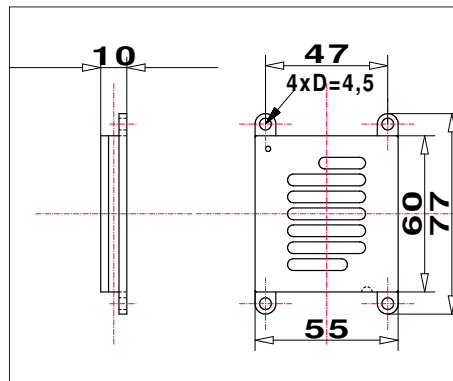
SPL HORIZONTAL 0° - 15° - 30°



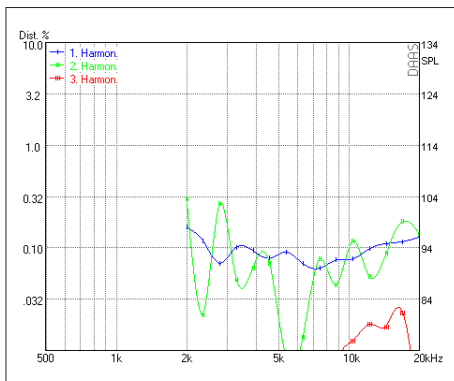
SPL VERTIKAL 0° - 5° - 15°



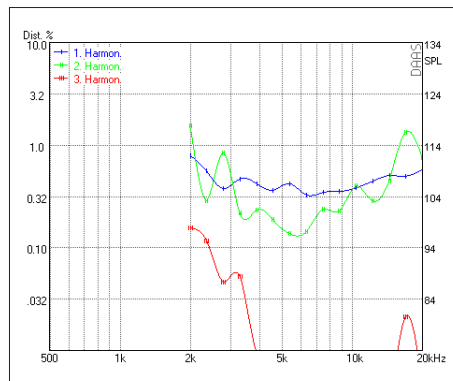
Waterfall



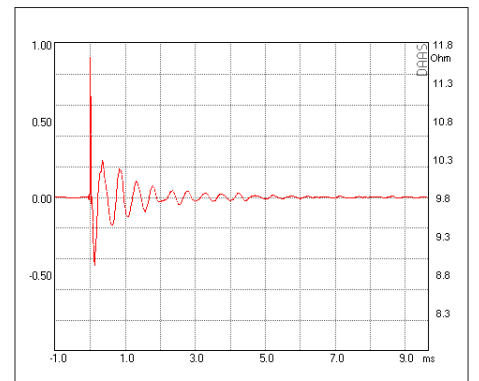
Impulse Response



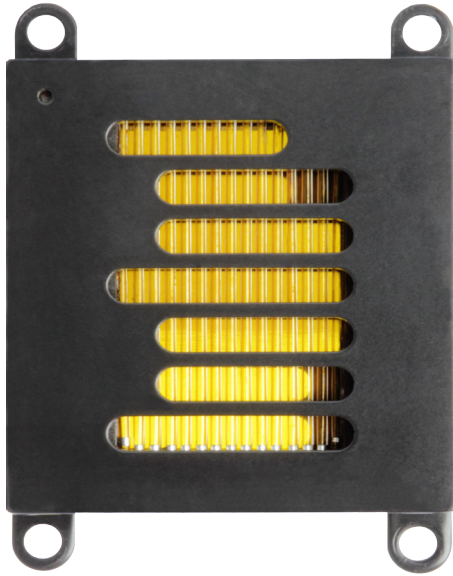
Harmonic Distortion 2.83 V



Harmonic Distortion 105 dB



Step Response



## DIPOL SERIE

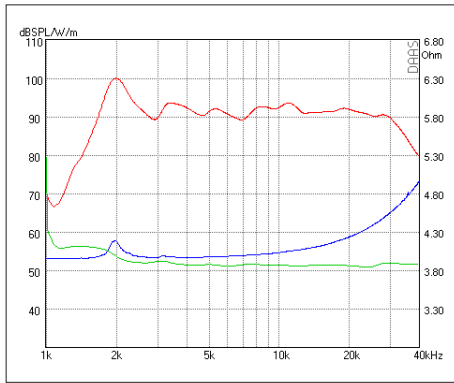
### AMT17D2.1

149 €/pc

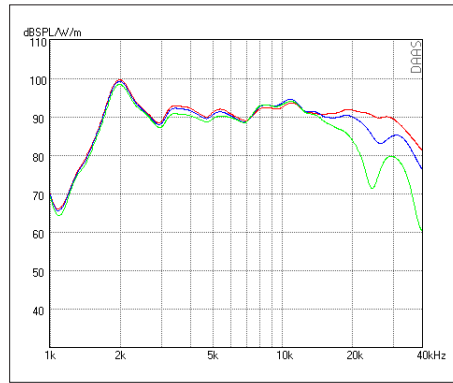
#### Special Properties

- Low Distortion
- Extended Bandwidth

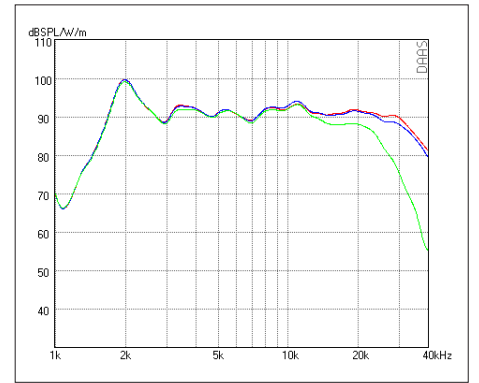
RESISTANCE	NOMINAL 4 OHM		
Z <sub>o</sub> 4.2 OHM	•	Z <sub>min</sub> 3.9 OHM	• RE 3.9 OHM
SENSITIVITY @ 2.83 V	91 dB		
FREQUENCY RESPONSE / -6 dB	1500 Hz - 35 kHz		
POWER HANDLING	60 W		
RESONANCE FREQUENCY / FS	2000 Hz		
RECOMMENDED CROSSOVER / 6 dB	5000 Hz		
RECOMMENDED CROSSOVER / 12 dB	4000 Hz		
DISPERSION HORIZONTAL / 15 kHz / -6 dB	50°		
DIAPHRAGM AREA	1260 mm <sup>2</sup>		
MAGNET MATERIAL	NEODYMIUM		
FACE PLATE	non		
TOTAL WEIGHT	160 g		
FACE PLATE DIM.	55 x 60 mm		



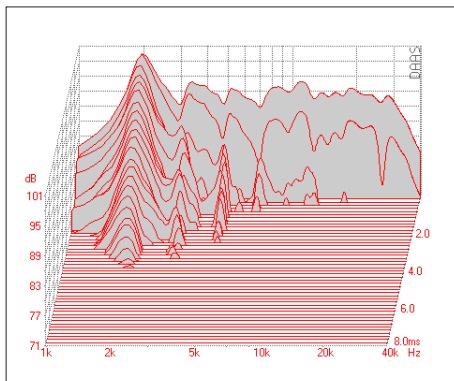
SPL 2.83 V - Phase - Impedance



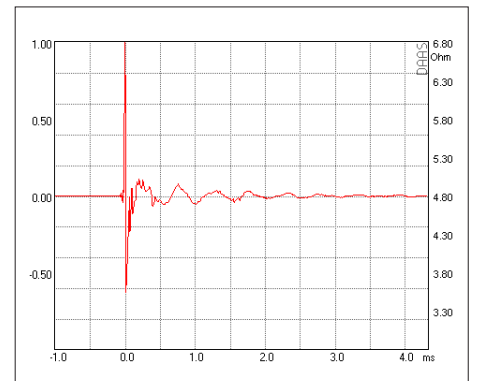
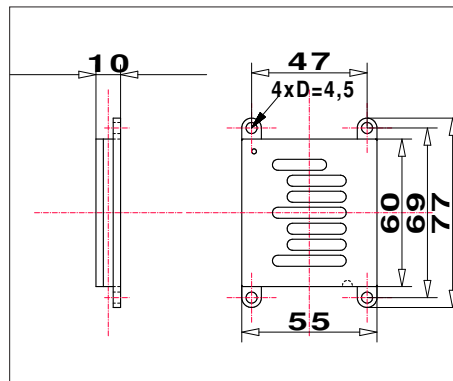
SPL HORIZONTAL 0° - 15° - 30°



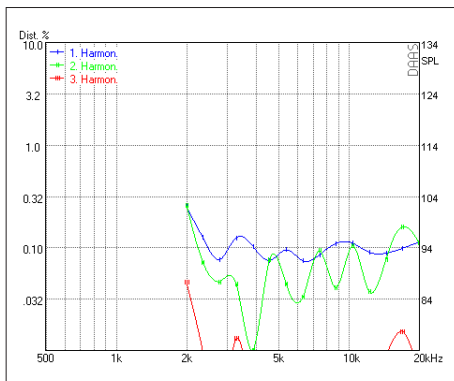
SPL VERTIKAL 0° - 5° - 15°



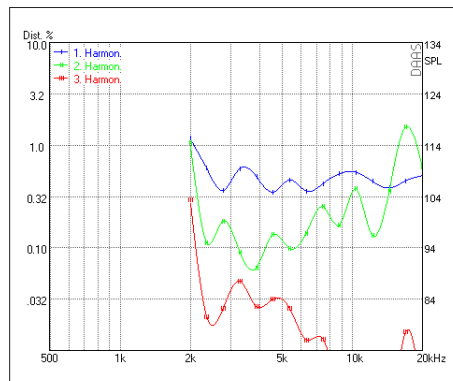
Waterfall



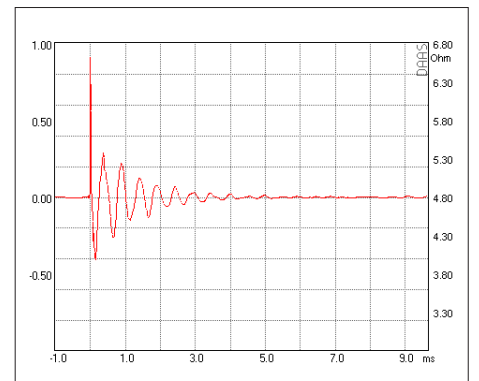
Impulse Response



Harmonic Distortion 2.83 V

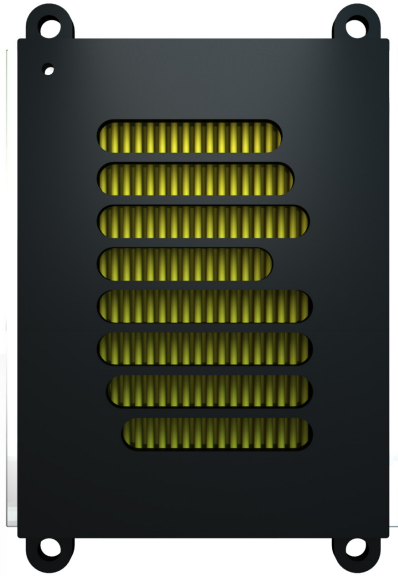


Harmonic Distortion 105 dB



Step Response





## DIPOL SERIE

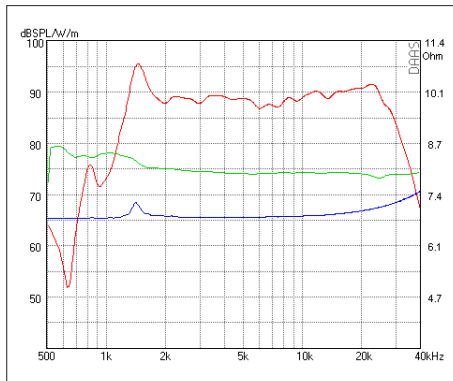
### AMT23D1.1

279 €/pc

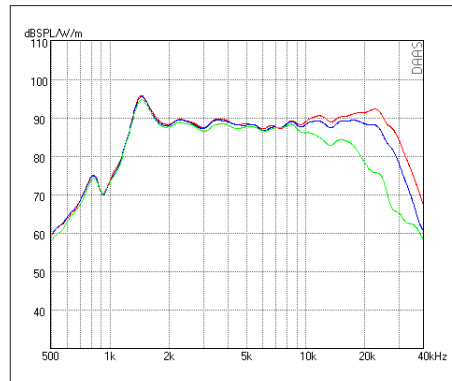
#### Special Properties

- Low Distortion
- Extended Bandwidth

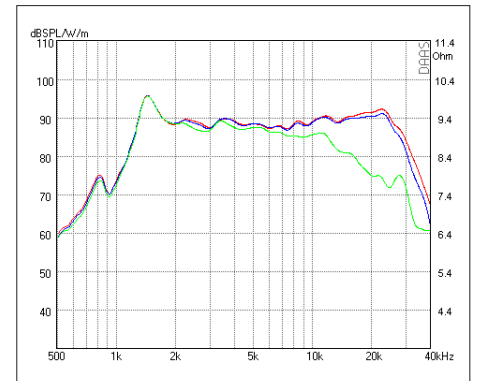
RESISTANCE	NOMINAL 8 OHM	
Z <sub>0</sub> 7.3 OHM	•	Z <sub>min</sub> 6.9 OHM
SENSITIVITY @ 2.83 V		89 dB
FREQUENCY RESPONSE / -6 dB		1200 Hz - 30 kHz
POWER HANDLING		92 W
RESONANCE FREQUENCY / FS		1400 Hz
RECOMMENDED CROSSOVER / 6 dB		2600 Hz
RECOMMENDED CROSSOVER / 12 dB		2300 Hz
DISPERSION HORIZONTAL / 15 kHz / -6 dB		60°
DIAPHRAGM AREA		2210 mm <sup>2</sup>
MAGNET MATERIAL		NEODYMIUM
FACE PLATE		non
TOTAL WEIGHT		300 g
FACE PLATE DIM.		61 x 98 mm



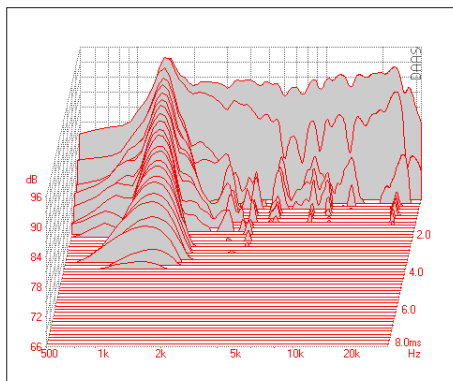
SPL 2.83 V - Phase - Impedance



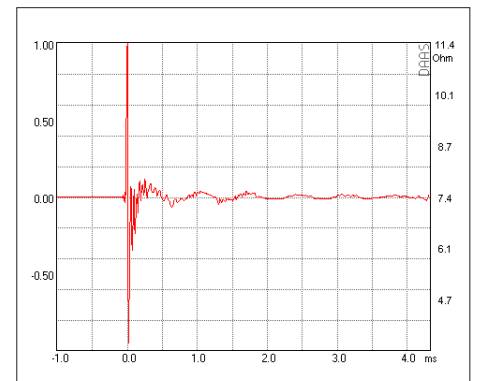
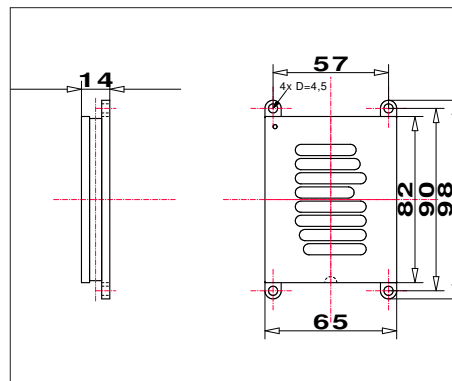
SPL HORIZONTAL 0° - 15° - 30°



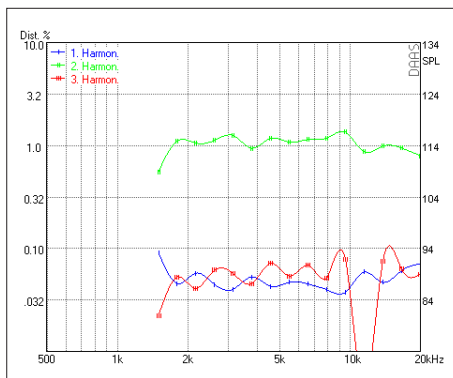
SPL VERTIKAL 0° - 5° - 15°



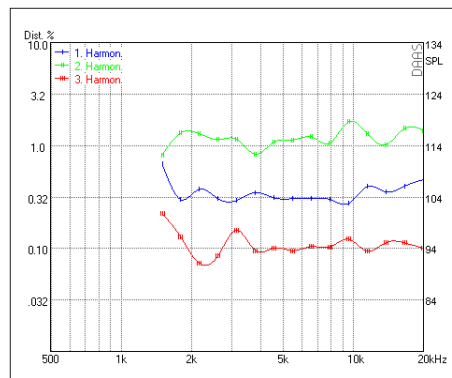
Waterfall



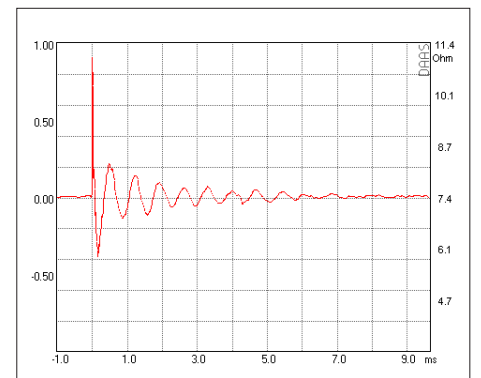
Impulse Response



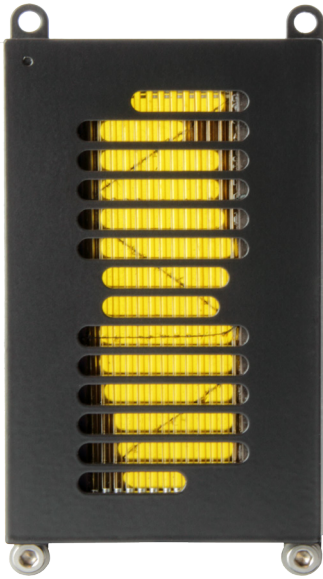
Harmonic Distortion 2.83 V



Harmonic Distortion 105 dB



Step Response



## DIPOL SERIE

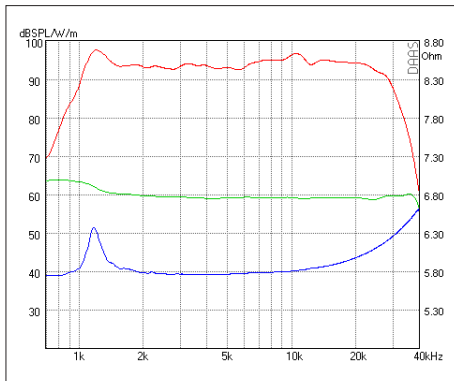
### AMT25D1.1

329 €/pc

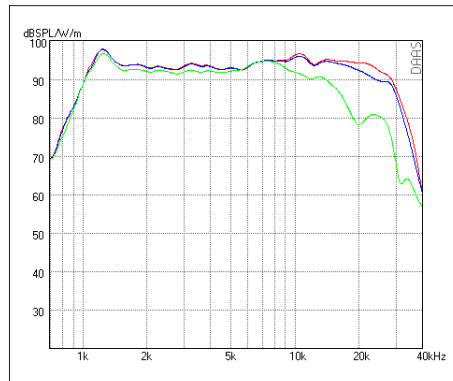
#### Special Properties

- High Efficiency
- Extended Bandwidth

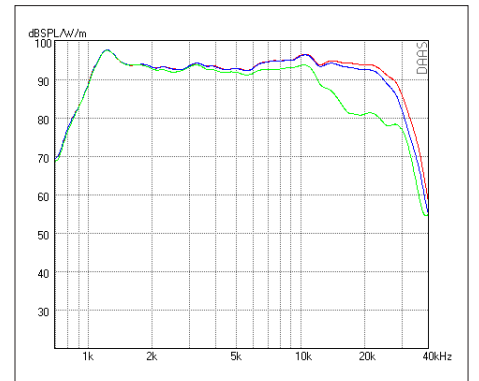
RESISTANCE	NOMINAL 6 OHM
Zo 6.7 OHM • Zmin 5.6 OHM • RE 5.6 OHM	
SENSITIVITY @ 2.83 V	92 dB
FREQUENCY RESPONSE / -6 dB	1100 Hz – 30 kHz
POWER HANDLING	135 W
RESONANCE FREQUENCY / FS	1250 Hz
RECOMMENDED CROSSOVER / 6 dB	2500 Hz
RECOMMENDED CROSSOVER / 12 dB	2300 Hz
DISPERSION HORIZONTAL / 15 kHz / -6 dB	60°
DIAPHRAGM AREA	6464 mm <sup>2</sup>
MAGNET MATERIAL	NEODYMIUM
FACE PLATE	non
TOTAL WEIGHT	400 g
FACE PLATE DIM.	65 x 128 mm



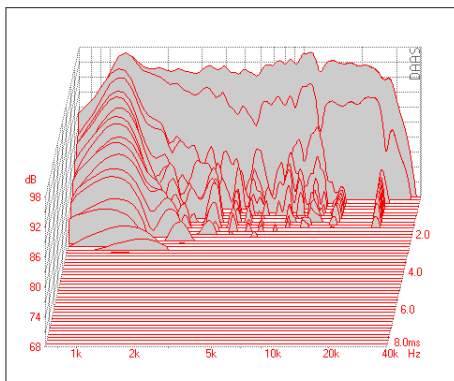
SPL 2.83 V - Phase - Impedance



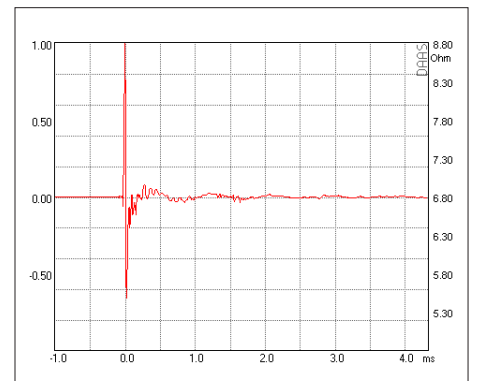
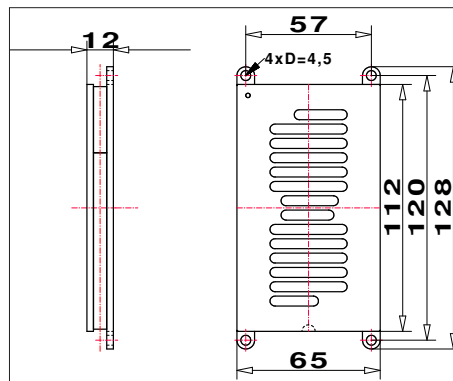
SPL HORIZONTAL 0° - 15° - 30°



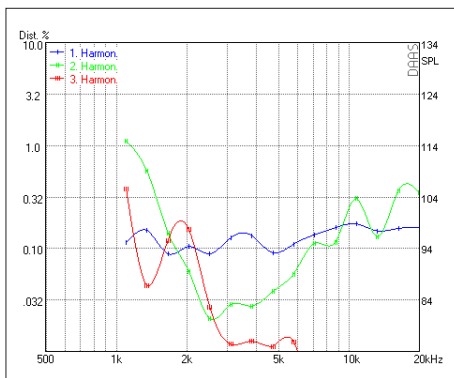
SPL VERTIKAL 0° - 5° - 15°



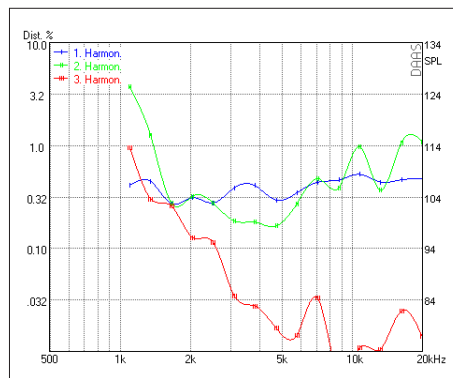
Waterfall



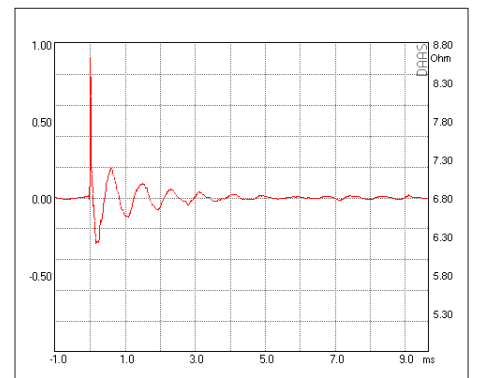
Impulse Response



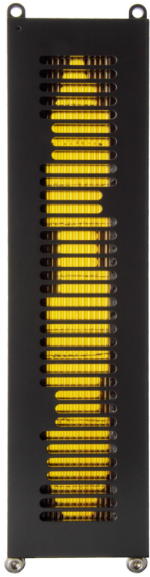
Harmonic Distortion 2.83 V



Harmonic Distortion 105 dB



Step Response



## DIPOL SERIE

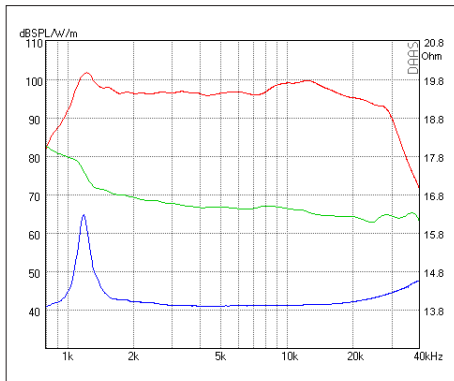
### AMT27D1.1

549 €/pc

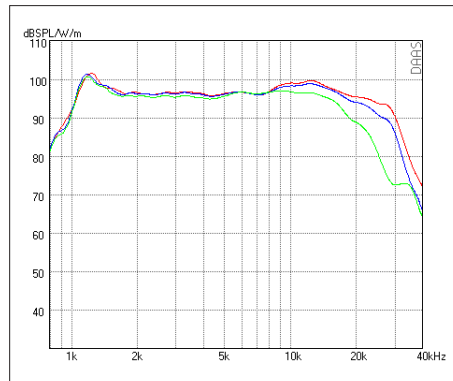
#### Special Properties

- High Efficiency
- Extended Bandwidth

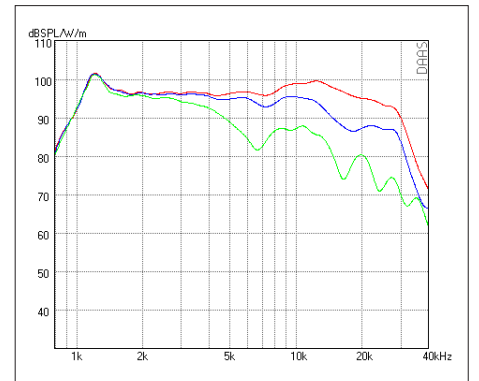
RESISTANCE		NOMINAL 12 OHM	
Zo 16.3 OHM	•	Zmin 13.9 OHM	•
RE 13.5 OHM			
SENSITIVITY @ 2.83 V		97 dB	
FREQUENCY RESPONSE / -6 dB		1000 Hz – 29 kHz	
POWER HANDLING		190 W	
RESONANCE FREQUENCY / FS		1150 Hz	
RECOMMENDED CROSSOVER / 6 dB		2400 Hz	
RECOMMENDED CROSSOVER / 12 dB		1800 Hz	
DISPERSION HORIZONTAL / 15 kHz / -6 dB		55°	
DIAPHRAGM AREA		8910 mm <sup>2</sup>	
MAGNET MATERIAL		NEODYMIUM	
FACE PLATE		non	
TOTAL WEIGHT		770 g	
FACE PLATE DIM.		59 x 258 mm	



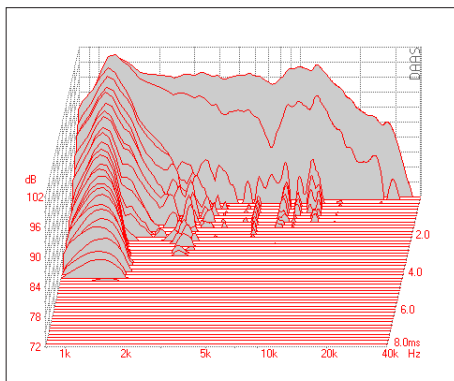
SPL 2.83 V - Phase - Impedance



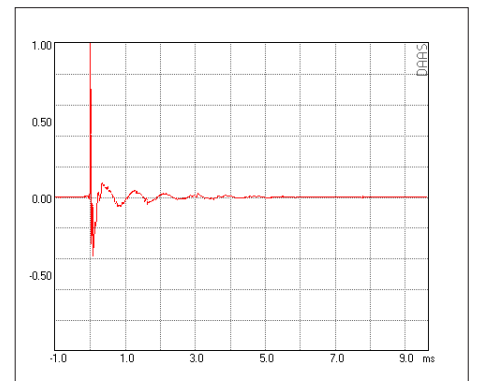
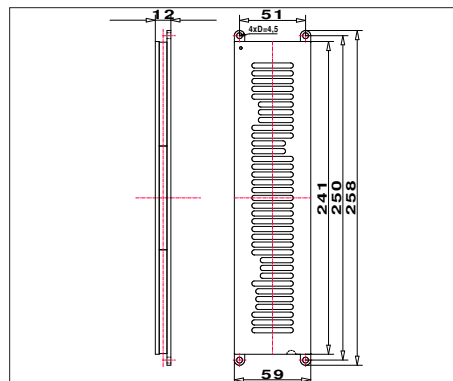
SPL HORIZONTAL 0° - 15° - 30°



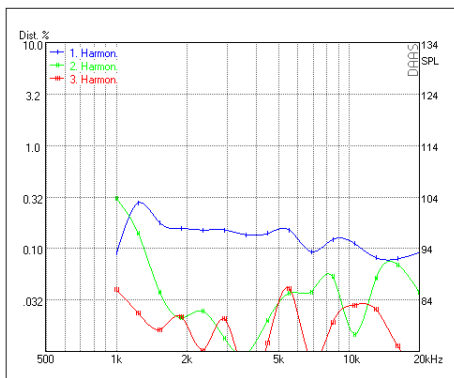
SPL VERTIKAL 0° - 5° - 15°



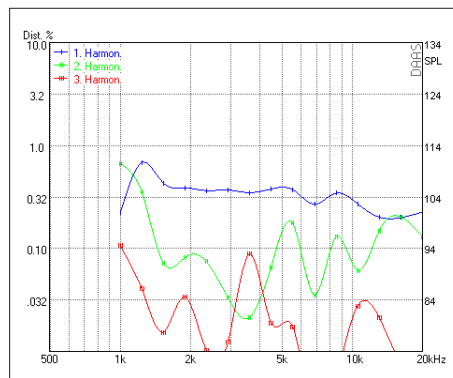
Waterfall



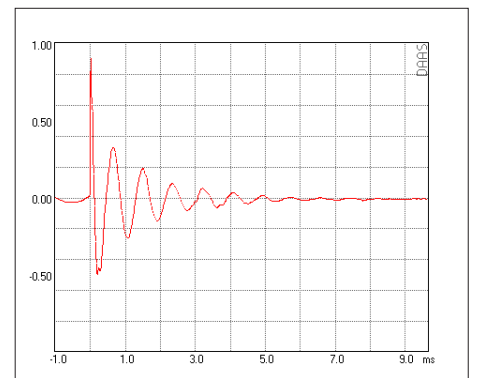
Impulse Response



Harmonic Distortion 2.83 V



Harmonic Distortion 105 dB



Step Response