



# QUICK START GUIDE GET TOGETHER DUO

ATTENTION: PLEASE READ QUICK START GUIDE BEFORE USE

ATTENTION: PRIÈRE DE LIRE LE GUIDE DE DÉMARRAGE RAPIDE AVANT UTILISATION

ATENCIÓN: LEA LA GUÍA DE INICIO RÁPIDO ANTES DE USARLO

BEACHTUNG: VOR DEM GEBRAUCH BITTE DIE SCHNELLSTARTANLEITUNG LESEN

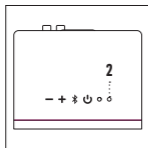
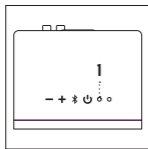
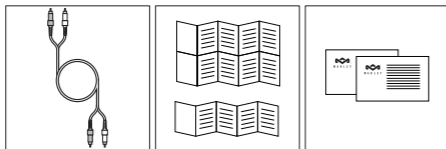
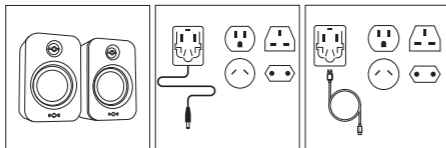
ATTENZIONE: LEGGERE LA GUIDA DI AVVIAMENTO RAPIDO PRIMA DEL USO

OPGELET: VOOR HET GEBRUIK DE SNELSTARTGIDS LEZEN

提示：使用前請閱讀快捷使用說明

주의：사용 전에 빠른 시작 가이드를 읽어 주십시오.

注意：ご使用前にクイックスタートガイドを必ずお読みください。



## STATUS

- Pairing Mode
- Paired
- AUX mode
- RCA mode

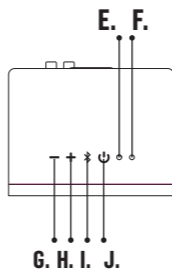
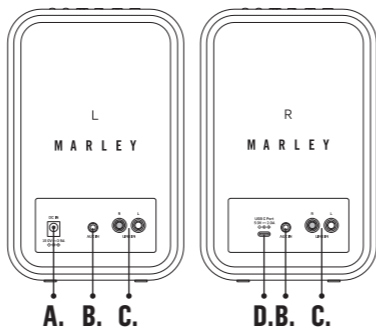
- Full Power
- Charging
- Low Power

## LED INDICATION

- Blinking
- On
- On
- On
- On
- On
- Blinking

## COMPONENTS

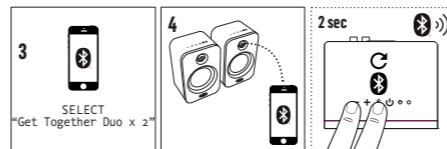
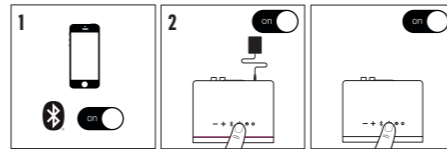
Composants / Componentes / Komponenten / Component



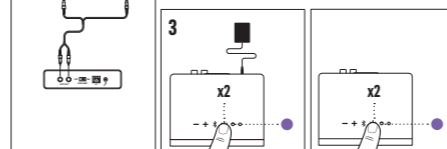
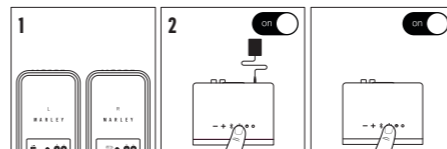
## LEGEND

- A. Mains Power Socket
- B. AUX in
- C. RCA Line in
- D. USB-C charging port
- E. Bluetooth LED
- F. Power LED
- G. Volume down / skip backward
- H. Volume up / skip forward
- I. Play/Pause/TWS Connect
- J. Power / Mode select - BT / AUX IN / RCA line in

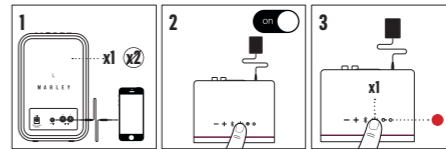
## BLUETOOTH



## RCA INPUT

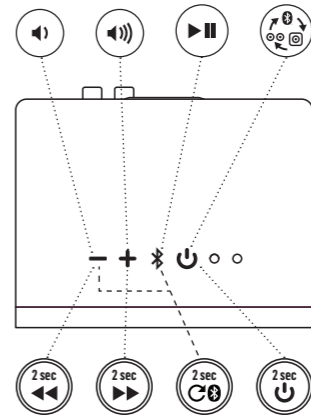


## AUX INPUT



## CONTROLS

Les Contrôles / Controlar / Kontrollen / Controlli



Full instruction and warranty details can be found at <https://www.thehouseofmarley.com/customer-support/instruction-books>

Para obtener libro de instrucciones, detalles de garantía y excepciones, visite <https://www.thehouseofmarley.com/customer-support/instruction-books>

Pour les informations complètes et les exceptions, rendez-vous sur <https://www.thehouseofmarley.com/customer-support/instruction-books>

Weitere Informationen und Ausnahmen erhalten Sie hier <https://www.thehouseofmarley.com/customer-support/instruction-books>

Per maggiori informazioni visitare il sito <https://www.thehouseofmarley.com/customer-support/instruction-books>

Komplette anvisninger og oplysninger om garanti kan findes på <https://www.thehouseofmarley.com/customer-support/instruction-books>

Teljes útmutató és garancianyilatkozat: <https://www.thehouseofmarley.com/customer-support/instruction-books>

Pełna instrukcja i warunki gwarancji są dostępne na stronie: <https://www.thehouseofmarley.com/customer-support/instruction-books>

Úplné pokyny a detaily záruky nájdete na <https://www.thehouseofmarley.com/customer-support/instruction-books>

Правила и условия гарантии полностью изложены по адресу <https://www.thehouseofmarley.com/customer-support/instruction-books>

De volledige handleiding en garantiegegevens kunnen hier worden gevonden: <https://www.thehouseofmarley.com/customer-support/instruction-books>

Fullstendige instruksjoner og garantidetaler kan finnes på <https://www.thehouseofmarley.com/customer-support/instruction-books>

Täydelliset ohjeet ja takuu löytyvät osoitteesta <https://www.thehouseofmarley.com/customer-support/instruction-books>

Fullständiga instruktioner och garantiinformation finns på <https://www.thehouseofmarley.com/customer-support/instruction-books>

Μπορείτε να βρείτε πλήρεις οδηγίες και λεπτομέρειες για την εγγύηση στη διεύθυνση <https://www.thehouseofmarley.com/customer-support/instruction-books>

Instruções completas e informações da garantia podem encontrar-se em <https://www.thehouseofmarley.com/customer-support/instruction-books>

Talimat ve garanti detaylarını tamamina adresinden erişilebilir <https://www.thehouseofmarley.com/customer-support/instruction-books>

如需查看完整说明和质保详情，请访问 <https://www.thehouseofmarley.com/customer-support/instruction-books>

如需完整說明與保固詳情，請瀏覽 <https://www.thehouseofmarley.com/customer-support/instruction-books>

取扱説明書の全文および保証内容の詳細は、 <https://www.thehouseofmarley.com/customer-support/instruction-books>

をご覧ください。 자세한 설명과 품질보증서 세부사항은 <https://www.thehouseofmarley.com/customer-support/instruction-books>

에서 확인할 수 있습니다. <https://www.thehouseofmarley.com/customer-support/instruction-books>

# QUICK START GUIDE GET TOGETHER DUO

## COMPLIANCE INFO



Conformité / Conformidad / Beachtung / Conformità / Na-levingsinformatie / 合規信息 / 규정 준수 정보 / コンプライアンス情報

### GET TOGETHER DUO

#### READ ALL INSTRUCTIONS BEFORE USE AND SAVE THESE INSTRUCTIONS FOR FUTURE REFERENCE.

This equipment has been tested and found to comply with the limits for a Class B digital device, pursuant to part 15 of the FCC Rules. These limits are designed to provide reasonable protection against harmful interference in a residential installation. This equipment generates, uses, and can radiate radio frequency energy and, if not installed and used in accordance with the instructions, may cause harmful interference to radio communications. However, there is no guarantee that interference will not occur in a particular installation. If this equipment does cause harmful interference to radio or television reception, which can be determined by turning the equipment off and on, the user is encouraged to try to correct the interference by one or more of the following measures:

- Reorient or relocate the receiving antenna.
- Increase the separation between the equipment and receiver.
- Connect the equipment into an outlet on a circuit different from that to which the receiver is connected.
- Consult the dealer or an experienced radio/TV technician for help.

This device complies with FCC radiation exposure limits set forth for an uncontrolled environment. This device complies with Part 15 of the FCC Rules. Operation is subject to the following two conditions: (1) this device may not cause harmful interference, and (2) this device must accept any interference received, including interference that may cause undesired operation.

[TheHouseofMarley.com](http://TheHouseofMarley.com)

#### FCC RF EXPOSURE STATEMENT:

This transmitter must not be co-located or operating in conjunction with any other antenna or transmitter. This device complies with FCC radiation exposure limits set forth for an uncontrolled environment.

#### CAUTION!

Any changes or modifications not expressly approved by the party responsible for compliance could void the user's authority to operate the equipment.

#### ISED STATEMENT

This device complies with Innovation, Science, and Economic Development Canada license-exempt RSS standard(s). Operation is subject to the following two conditions: (1) this device may not cause interference, and (2) this device must accept any interference, including interference that may cause undesired operation of the device.

This Class B digital apparatus complies with Canadian ICES-003.

#### ISED RF EXPOSURE STATEMENT:

The device is compliant with RF exposure guidelines, users can obtain Canadian information on RF exposure and compliance.

#### LE PRÉSENT APPAREIL EST CONFORME

Après examen de ce matériel aux normes d'intensité de champ RF, les utilisateurs peuvent sur l'exposition aux radiofréquences et la conformité and compliance d'acquiescer. les informations correspondantes.

#### BATTERY REPLACEMENT STATEMENT IN EUROPE

Your Get Together Duo includes a rechargeable battery designed to last the lifetime of the product. In the unlikely event that you should require a replacement battery, please contact Consumer Relations who will supply details of the warranty and out-of-warranty replacement battery service.

#### BATTERY DIRECTIVE

This symbol indicates that batteries must not be disposed of in the domestic waste as they contain substances which can be damaging to the environment and health. Please dispose of batteries in designated collection points.

#### WEEE EXPLANATION

This marking indicates that this product should not be disposed with other household wastes throughout the EU. To prevent possible harm to the environment or human health from uncontrolled waste disposal, recycle it responsibly to promote the sustainable reuse of material resources.

Hereby, FKA Brands Ltd, declares that this radio equipment is in compliance with the essential requirements and other relevant provisions of Directive 2014/53/EU. A copy of the Declaration of Conformity can be obtained from [www.thehouseofmarley.co.uk/declaration-of-conformity](http://www.thehouseofmarley.co.uk/declaration-of-conformity)

### FR GET TOGETHER DUO

LIRE TOUTES LES INSTRUCTIONS AVANT UTILISATION. LES CONSERVER POUR POUVOIR LES CONSULTER ULTÉRIEUREMENT.

#### DÉCLARATION ISEDC

Le présent appareil est conforme aux CNR d'Innovation, Sciences et Développement économique Canada applicables aux appareils radio exempts de licence. L'exploitation est autorisée aux deux conditions suivantes : (1) l'appareil n' doit pas produire de brouillage, et (2) l'utilisateur de l'appareil doit accepter tout brouillage radioélectrique subi, même si le brouillage est susceptible d'en compromettre le fonctionnement. Cet appareil numérique de classe b est conforme à la norme nmb - 003 du canada.

#### REPLACEMENT DES PILES

Votre enceinte Get Together Duo comprend une batterie rechargeable conçue pour durer aussi longtemps que le produit. Dans le cas improbable où vous seriez obligé de recourir à une batterie de rechange, veuillez contacter le Service Clientèle qui vous informera sur la garantie de votre produit et le remplacement hors garantie.

#### DIRECTIVE RELATIVE AUX PILES ET AUX ACCUMULATEURS

Ce symbole indique que les piles et les accumulateurs ne doivent pas être jetés avec les déchets ménagers car ils contiennent des substances pouvant être préjudiciables pour la santé humaine et l'environnement. Veuillez utiliser les points de collecte mis à disposition pour vous débarrasser des piles et accumulateurs usagés.

#### EXPLICATION WEEE

Le symbole indique que le produit ne doit pas être éliminé avec les autres déchets ménagers dans toute l'Union Européenne. L'élimination incontrôlée des déchets pouvant porter préjudice à l'environnement ou à la santé humaine, veuillez le recycler de façon responsable. Vous favoriserez ainsi la réutilisation durable des ressources matérielles.

FKA Brands Ltd déclare par la présente que cet équipement radio est conforme aux exigences essentielles et autres dispositions pertinentes de la Directive 2014/53/EU. Pour obtenir un exemplaire de la Déclaration de conformité, s'adresser à [www.thehouseofmarley.co.uk/declaration-of-conformity](http://www.thehouseofmarley.co.uk/declaration-of-conformity)

### NL GET TOGETHER DUO

ALLE INSTRUCTIES LEZEN ALVORENS HET PRODUCT IN GEBRUIK TE NEMEN. DEZE INSTRUCTIES ZORGVULDIG BEWAREN.

#### BATTERIJEN VERVANGEN

De Get Together Duo komt met een oplaadbare batterij die is ontworpen om net zolang als het product zelf mee te gaan. In het onwaarschijnlijke geval dat u een nieuwe batterij nodig hebt, kunt u contact opnemen met de klantendienst. De medewerkers van de klantendienst zullen u dan informatie geven over het vervangen van batterijen, al dan niet uit hoofde van garantie.

#### RICHTLIJN INZAKE BATTERIJEN

Dit symbool betekent dat batterijen niet met het huisvuil weggegooid mogen worden, omdat ze stoffen bevatten die schadelijk kunnen zijn voor het milieu en de gezondheid. Lever batterijen op een aangewezen inzamelpunt in.

#### UITLEG OVER AEEA

Deze marking geeft aan dat dit product binnen de EU niet met ander huisvuil mag worden weggegooid. Om eventuele schade aan het milieu of de menselijke gezondheid door het ongecontroleerd wegwerpen van afval te voorkomen, dient dit apparaat op verantwoorde wijze gerecycled te worden om duurzaam hergebruik van materiaalbronnen te bevorderen.

Hierbij verklaart FKA Brands Ltd. dat deze radioapparatuur voldoet aan de essentiële vereisten en andere relevante voorschriften van Directive 2014/53/EU. Een kopie van de conformiteitsverklaring kan worden verkregen via [www.thehouseofmarley.co.uk/declaration-of-conformity](http://www.thehouseofmarley.co.uk/declaration-of-conformity)

### IT GET TOGETHER DUO

LEGGERE INTEGRALMENTE LE PRESENTI ISTRUZIONI PRIMA DELL'USO. CONSERVARE LE PRESENTI ISTRUZIONI PER CONSULTAZIONI SUCCESSIVE.

#### SOSTITUZIONE DELLA BATTERIA

Il tuo sistema Get Together Duo include una batteria ricaricabile la cui durata corrisponde alla vita utile del prodotto. Nella remota eventualità che ti occorra una batteria di ricambio, contatta il Servizio Clienti che ti fornirà i dettagli del servizio relativo alla batteria sostitutiva in garanzia e non in garanzia.

#### DIRETTIVA RELATIVA ALLE BATTERIE

Questo simbolo indica che le batterie devono essere smaltite separatamente dai rifiuti domestici poiché contengono sostanze potenzialmente nocive per l'ambiente e la salute umana. Smaltire le batterie negli appositi centri di raccolta.

#### SPIEGAZIONE DIRETTIVA RAEE

Questo simbolo indica che il prodotto non deve essere smaltito assieme agli altri rifiuti domestici in tutti i Paesi dell'Unione Europea. Al fine di evitare un eventuale danno ambientale e alla salute umana derivante dallo smaltimento dei rifiuti non controllato, riciclare il prodotto in maniera responsabile per promuovere il riutilizzo sostenibile delle risorse materiali.

Con la presente, FKA Brands Ltd dichiara che l'apparecchiatura radio in oggetto è conforme ai requisiti essenziali e ad altre disposizioni pertinenti della Direttiva 2014/53/EU. È possibile richiedere una copia della Dichiarazione di conformità scrivendo all'indirizzo [www.thehouseofmarley.co.uk/declaration-of-conformity](http://www.thehouseofmarley.co.uk/declaration-of-conformity)

### SP GET TOGETHER DUO

LEA TODAS LAS INSTRUCCIONES ANTES DE USAR. GUARDE ESTAS INSTRUCCIONES PARA REFERENCIA FUTURA.

#### REEMPLAZO DE BATERÍAS

Su Get Together Duo incluye una batería recargable diseñada para funcionar durante la vida útil del producto. En el improbable caso de que necesite un reemplazo de batería, comuníquese con Servicios al Cliente, donde le suministrarán los detalles del servicio de reemplazo de baterías con garantía y sin garantía.

#### DIRETTIVA RELATIVA A LAS PILAS

Este símbolo indica que las pilas no se deben eliminar con la basura doméstica ya que contienen sustancias que pueden ser perjudiciales para el medio ambiente y la salud. Deshágase de las pilas en los puntos de recogida que existen para ese fin.

#### EXPLICACIÓN RAEE

Este símbolo indica que este artículo no se debe tirar a la basura con otros residuos domésticos en ningún lugar de la UE. A fin de prevenir los efectos perjudiciales que la eliminación sin control de los residuos puede tener sobre el medio ambiente o la salud de las personas, le rogamos que los recicle de forma responsable para fomentar la reutilización sostenible de los recursos materiales.

Por la presente, FKA Brands Ltd declara que este dispositivo de radio está en conformidad con los requisitos esenciales y otras disposiciones relevantes de la directiva 2014/53/EU. Si desea una copia de la

declaración de conformidad, solicítela a [www.thehouseofmarley.co.uk/declaration-of-conformity](http://www.thehouseofmarley.co.uk/declaration-of-conformity)

### FIN GET TOGETHER DUO

LUE KAIKKI OHJEET ENNEN KÄYTTÖÄ. SÄILYTÄ NÄMÄ OHJEET TULEVAAN TARVETTA VARTEN. TÄRKEÄT VAROTOIMENPITEET:

#### AKUN VAHTO

Get Together Duo-käytössä on ladattava akku, joka on suunniteltu kestäväksi yhtä pitkään kuin itse kaiutin. Jos akku kuitenkin täytyy vaihtaa, ota yhteyttä asiakaspalveluun, mistä saat tiedot takuun piiriin kuuluvan akun ja takuun ulkopuolisen akun korvaavasta toimituspalvelusta.

#### AKKUJA KOSKEVA DIREKTIIVI

Tämä symboli tarkoittaa, että akkuja ei saa hävittää talousjätteiden mukana, koska ne sisältävät aineita, jotka voivat olla vahingollisia ympäristölle ja terveydelle. Vie akut niille tarkoitettuihin keräyspisteisiin.

#### WEEE-SELITYS

Tämä merkki tarkoittaa, että tätä tuotetta ei saa hävittää muiden talousjätteiden mukana missään EU-maassa. Kontrolloimattomasta jätteiden hävittämisestä mahdollisesti aiheutuvien ympäristöhaittojen tai terveysvaarojen estämiseksi hävitä tämä tuote vastuullisesti edistääkseen materiaaliarvojen uudelleenkäyttöä.

FKA Brands Ltd. vakuuttaa, että tämä radiolaitte on direktiivin 2014/53/EU vaatimusten ja muiden siihen liittyvien säädösten mukainen. Kopion vaatimustenmukaisuusvakuutuksesta voi tilata lähettämällä sähköpostia osoitteeseen [www.thehouseofmarley.co.uk/declaration-of-conformity](http://www.thehouseofmarley.co.uk/declaration-of-conformity)

### DE GET TOGETHER DUO

LESEN SIE SICH VOR DER BENUTZUNG ALLE HINWEISE GUT DURCH. BEWAHREN SIE DIESE HINWEISE GUT AUF.

#### BATTERIEWECHSEL

Ihr Get Together Duo enthält eine wiederaufladbare Batterie, die für die gesamte Lebensdauer der Lautsprecher halten sollte. In dem unwahrscheinlichen Fall, dass Sie die Batterie ersetzen müssen, wenden Sie sich bitte an unseren Kundendienst, der Sie über die Einzelheiten zum Ersatz der Batterie im Garantiefall und außerhalb der Garantie informieren wird.

#### BATTERIE RICHTLINIE

Dieses Symbol weist darauf hin, dass die Batterien nicht mit dem gewöhnlichen Hausmüll entsorgt werden dürfen, da sie Stoffe enthalten, die sich auf Umwelt und Gesundheit schädlich auswirken können. Entsorgen Sie die Batterien bitte an den hierfür vorgesehenen Sammelstellen.

#### WEEE-ERKLÄRUNG

Diese Kennzeichnung weist darauf hin, dass dieses Produkt innerhalb der EU nicht mit anderem Hausmüll entsorgt werden soll. Damit durch unkontrollierte Abfallentsorgung verursachte mögliche Umwelt- oder Gesundheitsschäden verhindert werden können, entsorgen Sie dieses



BOB MARLEY™  
MARLEY™  
BOBMARLEY.COM

©Fifty-Six Hope Road Music Ltd., 2011-2020.  
Right of Publicity and Persona Rights.  
Fifty-Six Hope Road Music Ltd.

Marley, the Marley logo, Bob Marley and the Bob Marley logo are registered trademarks of Fifty-Six Hope Road Music Limited and any use of such marks by The House of Marley is under license. The Bluetooth® word mark and logos are registered trademarks owned by Bluetooth® SIG, Inc. and any use of such marks by The House of Marley is under license.



Niniejszym firma FKA Brands Ltd oświadcza, że to urządzenie radiowe jest zgodne z podstawowymi wymaganiami oraz innymi właściwymi postanowieniami Dyrektywy 2014/53/EU. Kopię Deklaracji zgodności można uzyskać pod

**www.thehouseofmarley.co.uk/declaration-of-conformity**

## BG GET TOGETHER DUO

ПРОЧЕТЕТЕ ВСИЧКИ ИНСТРУКЦИИ ПРЕДИ УПОТРЕБА И ГИ ЗАПАЗЕТЕ ЗА БЪДЕЩА СПРАВКА.

ПРЕДУПРЕЖДЕНИЕ: БАТЕРИИТЕ (КУТИЯТА С БАТЕРИИ ИЛИ ПОСТАВЕНИТЕ БАТЕРИИ) НЕ ТРЯБВА ДА СЕ ИЗЛАГАТ НА ПРЕКАЛЕНО ЗАТОПЛЯНЕ КАТО СЛЪНЧЕВА ТОПЛИНА, ОГЪН ИЛИ ДРУГИ ПОДОБНИ. ВНИМАНИЕ: ОПАСНОСТ ОТ ЕКСПЛОЗИЯ АКО БАТЕРИЯТА НЕ Е ПОСТАВЕНА ПРАВИЛНО. ЗАМЕНЕТЕ ЕДИНСТВЕНО СЪС СЪЩЯ ИЛИ С ПОДОБЕН ВИД.

**ЗАМЯНА НА БАТЕРИЯТА:**

Вашият Get Together Duo включва зареждащи се батерии, предназначени да издържат през целия живот на продукта. В малко вероятния случай, когато се наложи замяна на батерията, моля свържете се с отдела за клиентско обслужване, който ще Ви осигури информация за гаранцията и услугата за замяна на батерията извън гаранция.

**ДИРЕКТИВА ЗА БАТЕРИЯТА**

Този символ показва, че батериите не трябва да се изхвърлят с отпадъците, защото съдържат вещества, които може да са опасни за околната среда и за здравето. Моля, изхвърляйте батериите на предназначените за тази цел места.

**ОБЕО ОБЯСНЕНИЕ**

Това маркира показва, че този продукт не трябва да се изхвърля с други битови отпадъци в границите на ЕС. За предотвратяване на евентуална щета за околната среда или за човешкото здраве поради безконтролно изхвърляне на боклука, рециклирайте го отговорно, за да съдействате за екологичната многократна употреба на материалните ресурси.

С настоящето, FKA Brands Ltd, декларира, че това радиосъоръжение е съответствие на основните изисквания и на други необходими условия на Директива 2014/53/EU. Копие от Декларацията за съответствие може да бъде получено от **www.thehouseofmarley.co.uk/declaration-of-conformity**

## RO GET TOGETHER DUO

CITIȚI TOATE INSTRUCȚIUNILE ÎNAINTE DE UTILIZARE ȘI PĂSTRAȚI-LE PENTRU A LE CONSULTA ÎN VIITOR.

**ÎNLOCUIREA BATERILOR**

Difuzorul Get Together Duo include un acumulator conceput să reziste pe toată durata de viață a produsului. În cazul improbable în care ați fi obligat să înlocuiți acumulatorul, contactați Serviciul Clienți care vă va informa cu

privire la garanția produsului dumneavoastră și la înlocuirea acumulatorului după expirarea garanției.

**DIRECTIVA PRIVIND BATERIILE ȘI ACUMULATORII**

Acest simbol indică faptul că nu este permis să se arunce bateriile și acumulatorii cu deșeurile menajere deoarece conțin substanțe care pot dăuna mediului și sănătății. Vă recomandăm să predați bateriile și acumulatorii uzați la punctele de colectare puse la dispozitie.

**EXPLICAȚIA DEEE**

Acest simbol indică faptul că acest produs nu trebuie eliminat împreună cu alte deșeuri menajere pe teritoriul UE. Pentru a preveni posibile prejudicii asupra mediului sau sănătății umane din cauza eliminării necontrolate a deșeurilor, reciclați-l cu responsabilitate pentru a favoriza reutilizarea durabilă a resurselor materiale.

FKA Brands Ltd declară că acest dispozitiv radio este în conformitate cu cerințele esențiale și alte prevederi relevante ale Directivei 2014/53/EU. Un exemplar al Declarației de conformitate poate obținut de la **www.thehouseofmarley.co.uk/declaration-of-conformity**

## AR GET TOGETHER DUO

اقرأ كل الإرشادات والفهمها قبل استخدام المنتج بعناية والاحتفاظ بها للرجوع إليها.

### استبدال البطارية

يحتوي نظام Get Together Duo على بطارية قابلة لإعادة الشحن مصممة للاستمرار على مدار عمر المنتج. في حالة احتياجك لبطارية بديلة، هو أمر بعد الاحتمال، يرجى الاتصال بخدمة العملاء حيث يمكنك الحصول على التفاصيل حول خدمة استبدال البطارية داخل الضمان أو خارجة.

**تعليمات البطارية**

يشير هذا الرمز إلى أن البطاريات ينبغي عدم التخلص منها مع سائر المخلفات المنزلية لأنها تحتوي على مواد قد تضر بالبيئة والصحة. يُرجى التخلص من البطاريات في أماكن التجميع المخصصة.

**مخلفات الأجهزة الكهربائية / الإلكترونية**

يشير هذا الرمز إلى أن المنتج ينبغي عدم التخلص منه مع سائر المخلفات المنزلية الأخرى في جميع أنحاء الاتحاد الأوروبي. لتفادي احتمال وقوع الضرر على البيئة أو الصحة البشرية بسبب التخلص من النفايات بطرق غير خاضعة للضوابط، يُرجى إعادة تدويرها على نحو مسؤول لتعزيز إعادة الاستخدام المستدام العربية تقر FKA Brands Ltd بموجبها أن هذا الجهاز الإلكتروني يأتي متوافقًا مع المتطلبات اللازمة وغيره من الأحكام ذات الصلة من الأمر الإرشادي ٢٠١٤/٥٣/UE. ويمكن الحصول على نسخة من اعلان المطبقة على **www.thehouseofmarley.co.uk/declaration-of-conformity**

## CN GET TOGETHER DUO

使用之前請閱讀所有指南並妥善保存以備未來參考

**更換電池**

Get Together Duo 隨帶一個可充電電池。設備使用期內無需更換電池。若您因某種特殊原因需要更換電池時，請與客服聯繫。客服人員將為您提供詳細的保修期內和保修期後更換電池的服務說明。

**廢舊電池的處理**

此符號表示電池不得與家庭廢物一起丟棄，因為電池含有對環境和健康有害的成分。請將廢舊電池送至指定的收集處。

**歐共體廢棄電子電器設備指南(WEEE)解釋**

此標識表示在歐共體內本產品不得與家庭廢物色一起丟棄。無控制的拋棄會兼有環境或健康，必須避免。請盡力回收廢舊設備，使其持續得以再生利用。

FKA 分銷有限公司在此聲明，此無線設備符合2014/53/EU指南的基本要求和其它相關條款。請訪問www.thehouseofmarley.co.uk/declaration-of-conformity以獲取合規聲明的副本。

**NCC WARNING MESSAGE**  
低功率電波輻射性電機管理辦法  
第十二條 經型式認證合格之低功率射頻電機，非經許可，公司、商號或使用者均不得擅自變更頻 率、加大功率或變更原設計之特性及功能。

第十四條 低功率射頻電機之使用不得影響飛航安全及干擾合法通信；經發現有干擾現象時，應改 善至無干擾時方得繼續使用。前項合法通信，指依電信法規定作業之無線電通信。

低功率射頻電機須忍受合法通信或工業、科學及醫療用電波輻射性電機設備之干擾。

設備名稱：電源供應器	型號（型式）：ASSA107W-150080, ASSA107w-050200						
	Type designation (Type): ASSA107W-150080, ASSA107w-050200						
	受限制物質及其化學符號 Restricted substances and its chemical symbols						
單元/Unit		鉛Lead (Pb)	汞Mercury (Hg)	鎘Cadmium (Cd)	六價鉻Hexavalent chromium (Cr <sup>6+</sup> )	多溴聯苯Polybrominated biphenyls (PBB)	多溴二苯醚Polybrominated diphenyl ethers (PBDE)
電路板		○	○	○	○	○	○
電路板主件		○	○	○	○	○	○
充電器		○	○	○	○	○	○
外殼		○	○	○	○	○	○
備考1： “超出0.1 wt %” 及 “超出0.01 wt %” 係指該項物質之百分比含量超出百分比含量基準值。 <small>Note 1 : “Exceeding 0.1 wt %” and “exceeding 0.01 wt %” indicate that the percentage content of the restricted substance exceeds the reference percentage values of presence condition.</small>							
備考2： “○” 係指該項物質之百分比含量未超過百分比含量基準值。 <small>Note 2 : “○” indicates that the percentage content of the restricted substance does not exceed the percentage of reference value of presence.</small>							
備考3： “-” 係指該項物質為排除項目。 <small>Note 3 : The “-” indicates that the restricted substance corresponds to the exemption.</small>							

## ID GET TOGETHER DUO

BACA SEMUA PETUNJUK SEBELUM PENGGUNAAN DAN SIMPAN PETUNJUK INI UNTUK RUJUKAN DI MASA MENDATANG.

**PENGANTIAN BATERAI**

Get Together Duo Anda mencakup baterai isi ulang yang dirancang untuk bisa dipakai selama masa pakai produk. Apabila Anda memerlukan baterai pengganti, hubungi Layanan Pelanggan yang akan memberikan detail tentang layanan baterai pengganti garansi dan di luar garansi.

**ARAHAN BATERAI**

Simbol ini menunjukkan bahwa baterai tidak boleh dibuang bersama sampah rumah tangga karena mengandung zat yang dapat merusak

lingkungan dan kesehatan. Buang baterai di tempat pengumpulan yang telah ditentukan.

**PENJELASAN WEEE**

Tanda ini menunjukkan bahwa produk ini tidak boleh dibuang bersama sampah rumah tangga lain di seluruh UE. Untuk mencegah kemungkinan bahaya pada lingkungan atau kesehatan manusia dari pembuangan limbah yang tidak terkendali, daur ulang produk ini secara bertanggung jawab untuk mempromosikan penggunaan kembali sumber daya bahan secara berkelanjutan.

FKA Brands Ltd dengan ini menyatakan bahwa peralatan radio ini mematuhi persyaratan penting dan ketentuan relevan lainnya dari Arahan 2014/53/EU. Salinan Pernyataan Kepatuhan bisa diperoleh dari **www.thehouseofmarley.co.uk/declaration-of-conformity**

## KR GET TOGETHER DUO

사용 전에 모든 지침을 읽고 이후 참조할 수 있도록 보관해 두십시오.

배터리 교체

GET TOGETHER DUO에는 제품의 수명을 지속하도록 설계된 재충전 배터리가 포함되어 있습니다. 드물지만 배터리를 교체해야 하는 경우에는 고객 서비스 부서에 문의하여 보증 및 보증 외 배터리 교체 서비스에 대한 상세 정보를 확인하십시오.

**배터리 지침**

이 기호는 배터리가 환경 및 건강에 해를 끼칠 수 있는 물질을 함유하고 있으므로 가정용 쓰레기로 폐기해서는 안 된다는 것을 나타냅니다. 배터리를 지정된 수거 장소에 버리십시오.

**WEEE 설명**

이 표시는 이 제품을 EU 전역에서 다른 가정용 쓰레기와 함께 폐기해서 는 안 된다는 것을 나타냅니다. 통제되지 않은 쓰레기 폐기로 인해 환경 이나 인체에 해를 끼치지 않도록 하려면 책임감을 갖고 재활용하여 물질 자원의 지속 가능한 재사용을 촉진하십시오.

FKA BRANDS LTD는 이 무선 장비가 DIRECTIVE 2014/53/EU의 필수 요건 및 기타 관련 조항을 준수함을 선언합니다. 적합성 선언서(DECLARATION OF CONFORMITY) 사본은 [www.thehouseofmarley.co.uk/declaration-of-conformity](http://www.thehouseofmarley.co.uk/declaration-of-conformity) 에서 얻을 수 있습니다.

제12조 DGT의 허가 없이 회사, 기업 또는 사용자는 주파수를 변경하거나 송전을 개선하거나 원래 특성은 물론 성능을 공인된 저전력 무선 주파수 장치 바꿀 수 없습니다.

제14조 저전력 무선 주파수 장치는 항공기 보안에 영향을 미치거나 합법적 통신을 간섭해서는 안 됩니다. 이를 발견한 경우 사용자는 간섭을 하지 않을 때까지 즉시 작동을 중지해야 합니다. 앞서 말한 합법적 통신이라 함은 무선 통신이 전기통신법에 따라 작동된다는 뜻입니다. 저전력 무선 주파수 장치는 합법적 통신 또는 ISM 전파 방출 장치의 간섭에 민감해야 합니다



To prevent possible hearing damage, do not listen at high volume levels for long periods. Full instruction and warranty details can be found at **http://www.thehouseofmarley.com/instructionbooks**.

Con el fin de evitar lesiones auditivas, se aconseja no escuchar a un volumen excesivamente alto durante un período prolongado. Para ver los detalles completos y las excepciones, consulte **http://www.thehouseofmarley.com/instructionbooks**

Afin d'éviter tout dommage auditif possible, ne pas écouter à un volume sonore élevé pendant une période prolongée. Pour les informations complètes et les exceptions, rendez-vous sur **http://www.thehouseofmarley.com/instructionbooks**

Um mögliche Hörschäden zu vermeiden, stellen Sie die Lautstärke nicht über einen längeren Zeitraum sehr hoch ein. Weitere Informationen und Ausnahmen erhalten Sie hier **http://www.thehouseofmarley.com/instructionbooks**

Per evitare possibili danni all'udito, non ascoltare audio a livelli elevati di volume per lunghi periodi. Per tutti i dettagli e le eccezioni, visitare il sito **http://www.thehouseofmarley.com/instructionbooks**

Marley and the Marley logo are registered trademarks of Fifty-Six Hope Road Music Limited and the use of such marks by House of Marley is under license. The Bluetooth® word mark and logos are registered trademarks owned by Bluetooth® SIG, Inc. and any use of such marks by The House of Marley is under license.

Operating frequency bands: 2402 - 2480MHz  
CE BT Max Power Transmitted Power:  
LEFT: EM-JA019L = 2.98dBm  
RIGHT: EM-JA019R = 4.18dBm

DISTRIBUTED BY:  
House of Marley, LLC  
3000 N Pontiac Trail  
Commerce Township, MI 48390 USA

Distributed in Europe by FKA Brands Ltd.,  
Somerhill Business Park, Five Oak Green Rd,  
Tonbridge, Kent TN11 0GP, UK

QS-EMJA019



EMJA019 LEFT

