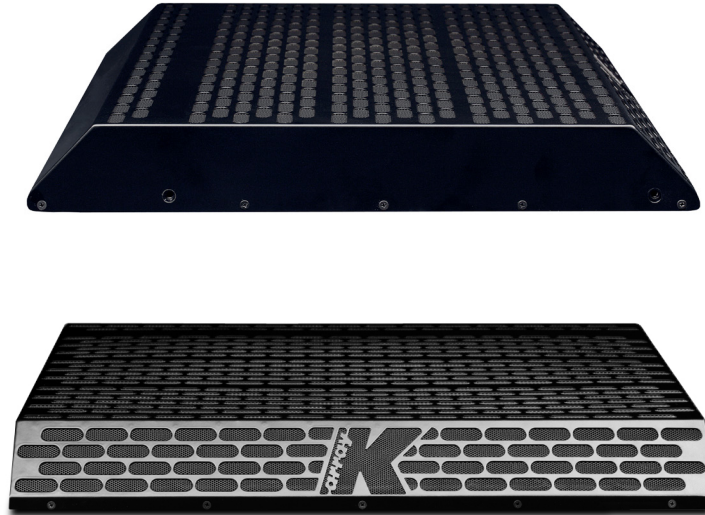


# KJ50VB

Low profile, variable beam speak



## FEATURES

- Selectable horizontal coverage
- Variable vertical coverage
- Multiple 2" long excursion, full range drivers
- Smooth frequency response
- Electronically protected
- High dynamic range capability
- Top quality components for outstanding performance
- Ultra-thin frame for invisible installation
- Weather proof, suitable for outdoor installations -IP54

## ACCESSORIES

- K-KClamp
- K-KClamp/s

## DESCRIPTION

Along with its ultra-slim profile, substantial output capability and smooth frequency response over the full vocal range, the KJ50vb Ninja has the unique capability to switch the horizontal coverage pattern and to vary the vertical coverage through DSP control. The Ninja is specifically designed to work with the K-array KA24 four-channel amplifier. The KA24 provides the discrete preset DSP control settings for speaker protection, equalization and the vertical beamwidth and steering capabilities. All KJ50VB components are designed by the K-array R&D department and are custom made under the K-array quality control system.

## COLORS AVAILABLE

BLACK



SPECIFIC RAL CODE FOR A CUSTOMIZED PAINTED MODEL



## APPLICATIONS

Broadcast/ TV Studio

Club/ DJ Set

Corporate/AV

Hospitality

House of Worship

Large Congregations

Live Concerts

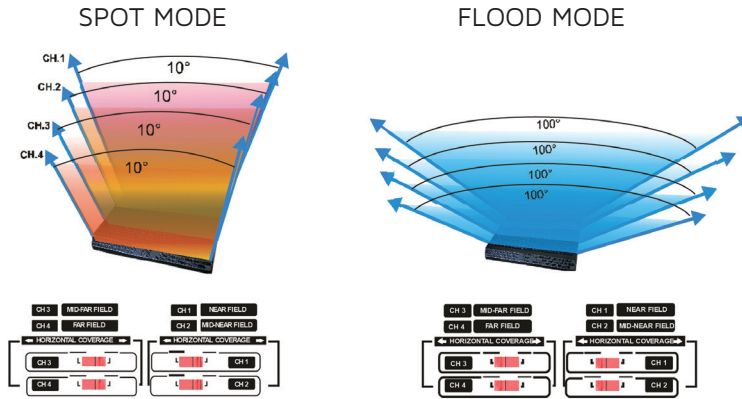
Store

Theatre

Theme Park

# TECHNICAL SPECIFICATIONS

	<b>ACOUSTICS</b>		<b>RECOMMENDED AMPLIFIERS</b>
Power handling	4 x 150 W <sup>(AES)</sup>	Type	The K-array KA7-7 amplifier can drive up to 4 x KJ50vb speaker systems in parallel.
Impedance	4 x 16Ω (spot mode), 4 x 8Ω (flood mode)	Coverage	<b>SELECTION SWITCH</b> 4 x switches for near, mid-near, mid-far and far-field
Frequency range	150 Hz - 19 KHz	Dimensions	<b>PHYSICAL</b> 50.3 x 43.3 x 6.1 cm (19.80" x 17.05" x 2.40")
Maximum SPL	124 dB continuous - 130 dB peak	Weight	10 Kg (22.5 lbs)
	<b>COVERAGE</b>		Notes for data New materials and design are introduced into existing products without previous notice. Present systems may differ in some respects from those presented in this catalogue.
Horizontal	switchable from Spot (10°) to Flood (100°)		
Vertical	DSP dependent 10° 'Narrow' to 70° 'Wide', +/- 15° variable focus in 'Narrow' mode		
	<b>SPEAKER INPUT</b>		
Connectors	1 x 8-pin Speakon NL8 input 1 x 8-pin Speakon NL8 Thru		
	<b>TRANSDUCERS</b>		
Full-range	36 x 2" neodymium magnet 0.75" VC long-excursion transducers		



## COMBINED MODE

