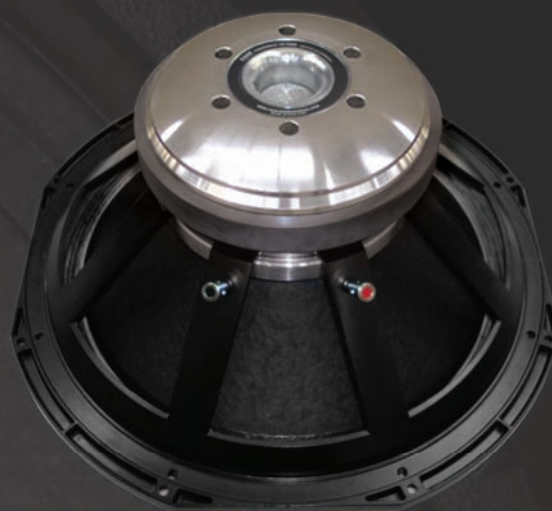
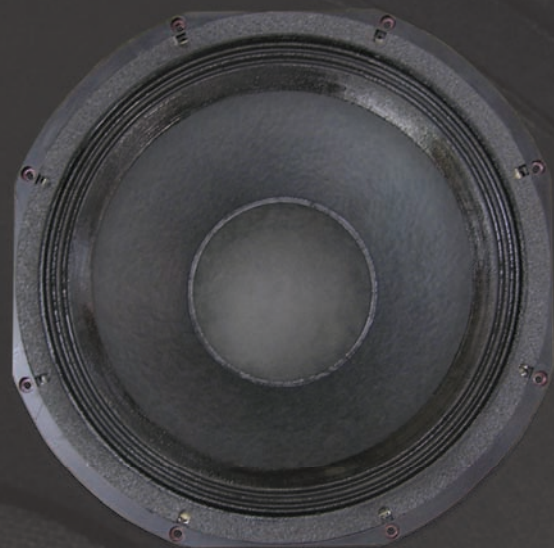


# COLOSSUS 18-1500



PROFESSIONAL SERIES

## ELECTRO ACOUSTIC SPECIFICATIONS

Nominal Chassis Diameter	18"
Impedance	8 Ω
Power Handling	1500 (A.E.S)
Usable Frequency Range -6dB	25Hz - 300Hz
Sensitivity 1 w - 1m	97.5dB
Moving Mass inc. Air Load	246 grams
Minimum Impedance Zmin	7.5 Ω
Effective Piston Diameter	15.19" / 386mm
Peak Displacement Volume of Cone Vd	1.5 litres
Magnet Weight	120 oz
Magnetic Gap Depth	0.59" / 15mm
Flux Density	1.0 Tesla
Coil Winding Height	1.18" / 30 mm
Voice Coil Length	186.34 ft / 56.8m
Voice Coil Diameter	4.0" / 101.6 mm

## THIELE SMALL PARAMETERS

FS Hz	33.5 Hz
RE Ohms	5.3 Ω
Qms	6.99
Qes	0.259
Qts	0.25
Vas Ltr	175
Vd Litres	1.5
CMS (mm/N)	0.0891
BL T/m	32.74
Mms (grms)	247
Xmax mm	12.75
Sd cm <sup>2</sup>	1178 cm <sup>2</sup>
Efficiency %	2.5

## MOUNTING / SHIPPING INFORMATION

Overall Diameter	19.1" / 485 mm
Width Across Flats	18" / 457 mm
Flange Height	0.465" / 11.8 mm
Baffle Hole Diameter F/M	16.53" / 420 mm
Baffle Hole Diameter R/M	16.33" / 414 mm
Gasket Supplied	Front & Rear
Fixing Holes	8 x 7 diam on 468 PCD 8 x 7 diam on 438.15 PCD
Depth	8.48" / 215.8 mm
Weight	Not Available
Recommended Enclosure	3.5-8.8 cu ft / 100-250 Litres
Volume	100-250 Litres
Volume Displaced by Driver	0.269 cu ft / 7.6 Litres
Shipping Weight	37.25 lb / 16.9 kg
Packing Carton Dimensions	485 x 485 x 276 mm

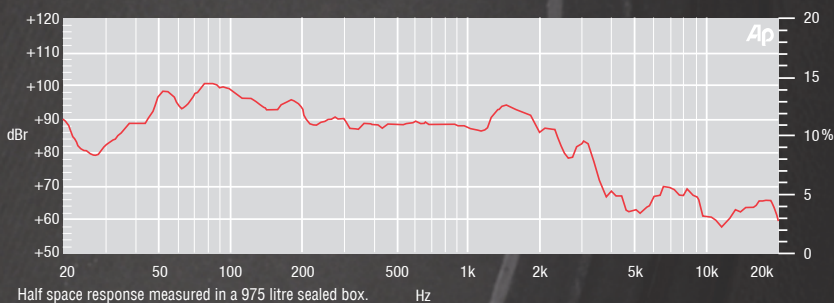
## MATERIALS OF CONSTRUCTION

Former Material	Fibreglass
Voice Coil	Aluminium
Magnet Material	Ferrite
Chassis	Die-cast Aluminium
Cone	Curvilinear Polycellulose
Surround / Edge Termination	Polyvinyl Damped Multi Roll HG poly/cotton
Dust Dome	Solid Paper
Connectors	Push-button Spring Terminals
Polarity	Positive Voltage at Red Terminal Causes Forward Motion of Cone

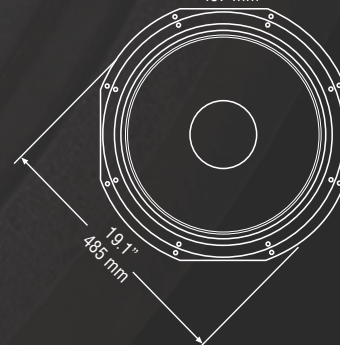
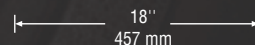
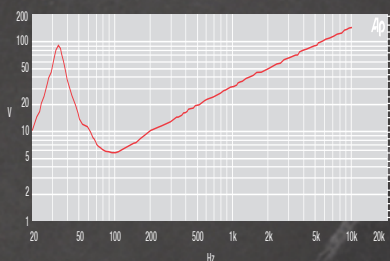
## APPLICATION NOTES:

The Colossus 18-1500 is intended to be used by the serious sub-bass lover. This High output driver can be used singly or as part of a larger multiway system. It is suitable for loading in a variety of enclosure types since it allows enclosure designers considerably more freedom with specialised loading techniques without having to make allowances for physical characteristics or power handling limitations. The unit features a 4-inch four layer voice coil made of copper-clad-aluminium wire immersed in a symmetric magnetic field and is centralised by using two (D.L) Suspensions in a dual alignment configuration to maintain ultra linearity and stability at extreme excursions. The curvilinear Polycellulose cone is reinforced with high strength Fibrillated Nylon fibres to resist deformation under extreme loads. This coupled with a large Xmax of 12.75mm ensures the driver will deliver rock solid sub bass at extraordinary high levels of excursion. The driver handles 1500 Watts (A.E.S) continuous and can cope with peaks in excess of 5700 watts. This is due to the advanced thermal management in the form of a vented die-cast chassis coupled with increased motor system and voice coil venting. The Colossus 18-1500 exhibits 97.5 dB sensitivity and has a working bandwidth of 25Hz to 200Hz.

## FREQUENCY RESPONSE DATA:



## IMPEDANCE:



- Please inquire about alternative impedances.
- A.E.S. power handling test. Pink noise bandpass filtered at 12 dB per octave with cutoff frequencies of 30 Hz and 300 Hz. Driver mounted in free air, test signal applied at rated power for two hours. Driver shows no appreciable signs of damage after testing.
- Please note that the frequency response measurements are supplied for comparison only and are not a measure of the low frequency performance which may be achieved in a fully optimised system.

FANE