



21 MRP

8" widerange

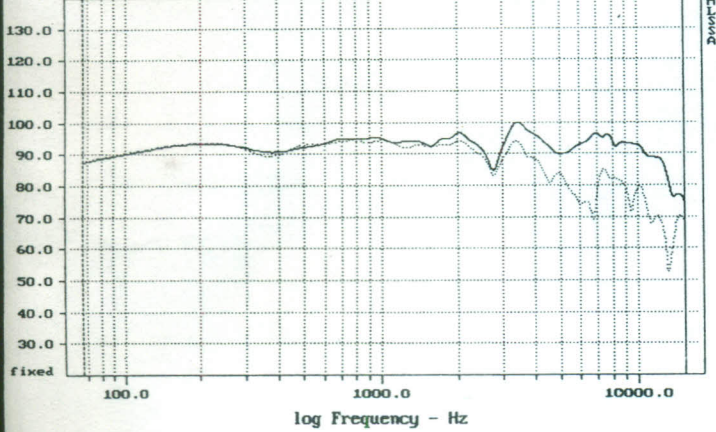
The best choice for reasonable cost single unit when smooth response combined with distance accuracy is needed.



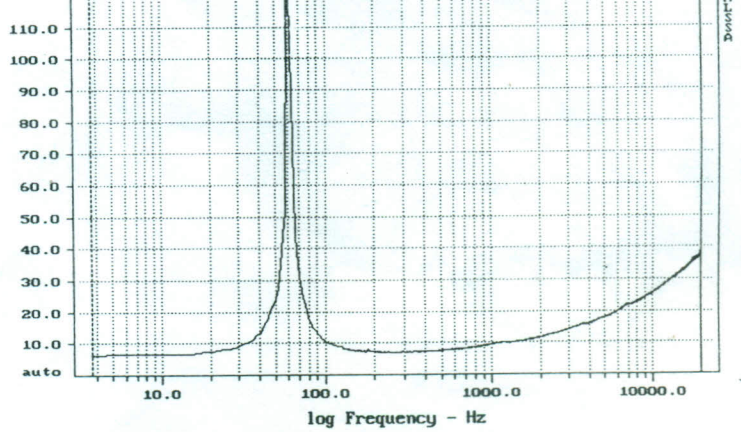
Nominal impedance : 8 Ω
 Sensitivity /2.8V /1m. : 94 dB
 Power handling rms : 60 W
 Magnet/size : Ferrite /100 mm

Voice-coil/diameter : Copper / 25 mm
 Voice-coil former : Alu
 Cone : Cellulose
 Surround : Coated

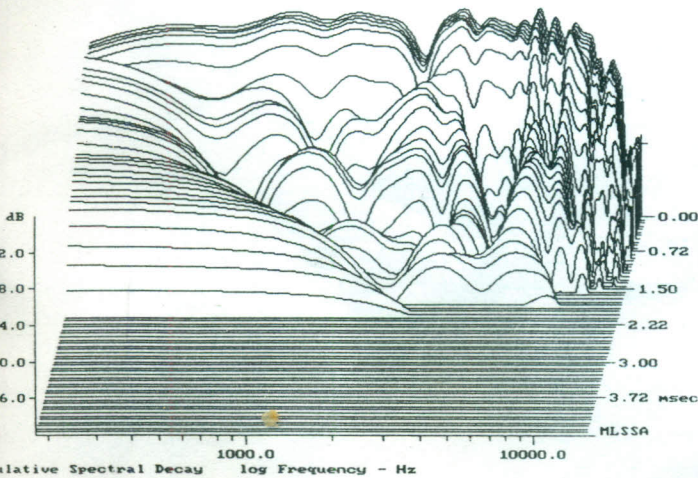
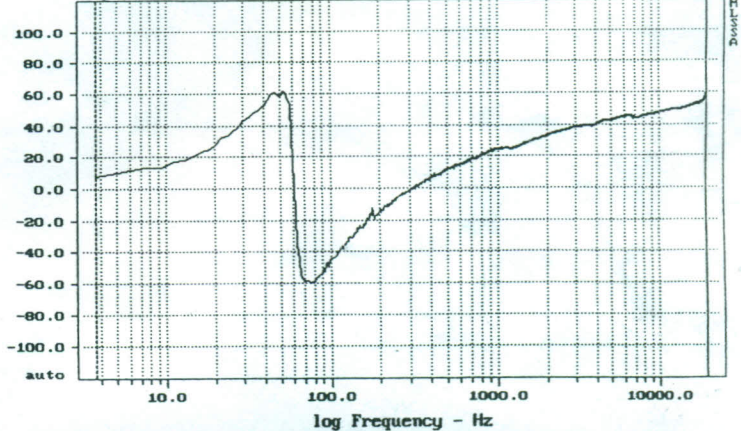
Sensitivity Mag - dB SPL/watt (8.0 ohm load) (0.18 oct)

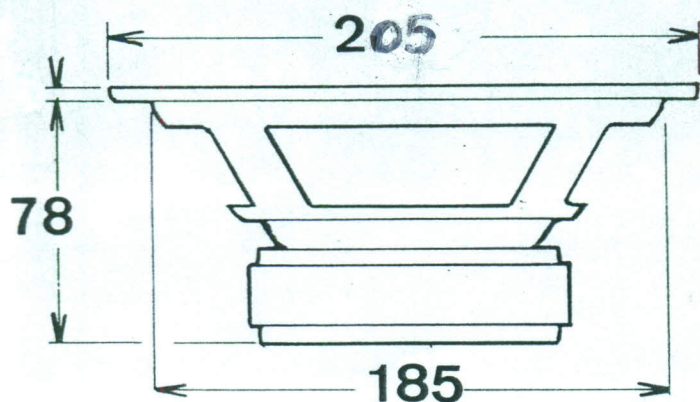


Impedance Magnitude - ohms (equalized)



Impedance Phase - deg (equalized)





MAGNET DIAMETER	100 MM
OVERALL DIAMETER	205 MM
MOUNTING HOLES	5MM X 4
WEIGHT	1.7 KG

PARAMETERS

FREE AIR RESONANCE FREQUENCY	FS	61.2	Hz
DC RESISTANCE	RE	6.3	Ω
MECHANICAL LOSSES AS EQUIVALENT RES	RES	79	Ω
MECHANICAL Q.	QMS	8.81	
ELECTRICAL Q.	QES	0.71	
TOTAL Q.	QTS	0.65	
SERIE LOSSLESS INDUCTANCE	L1	0.44	MH
SERIE LOSS INDUCTANCE	L2	0.59	MH
COMPLIANCE AS AN EQUIVALENT VOLUME AIR	VAS	52.1	LITRES
MOVING MASS + AIR LOAD	MMS	9.32	GRAMS
MECHANICAL COMPLIANCE OF SUSPENSION	CMS	726	$\mu\text{M}/\text{NEWTON}$
MOTOR FORCE FACTOR	BL	5.7	TESLA-M
REFERENCE SPL 1 WATT, 1 M.	SPL REF	94.1	dB
RADIATING AREA	SD	226	CM ²
LINEAR DISPLACEMENT PEAK TO PEAK	X MAX	6	MM

DAVIS
ACOUSTICS

DAVIS reserves the right to vary products and specifications without prior notice.

DAVIS se réserve le droit de modifier ses produits et caractéristiques sans préavis.