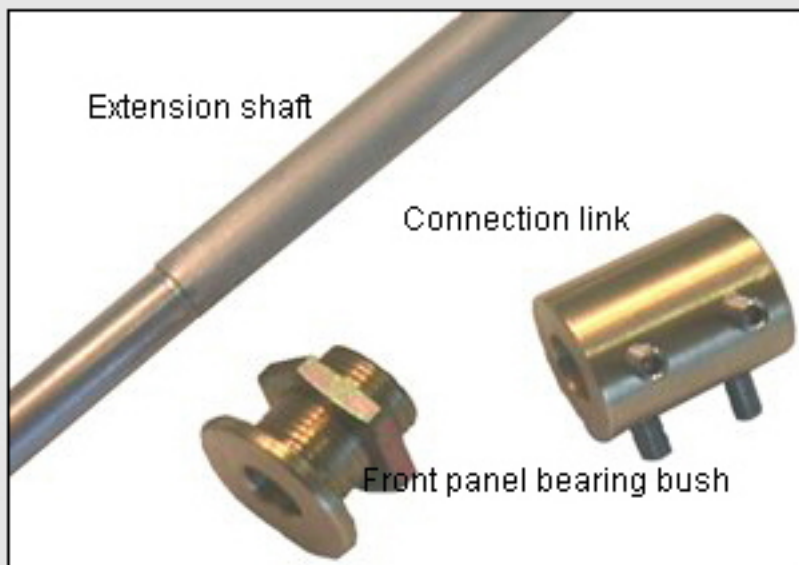


# Shaft extensions

## CT-ext1. Shaft extension kit.



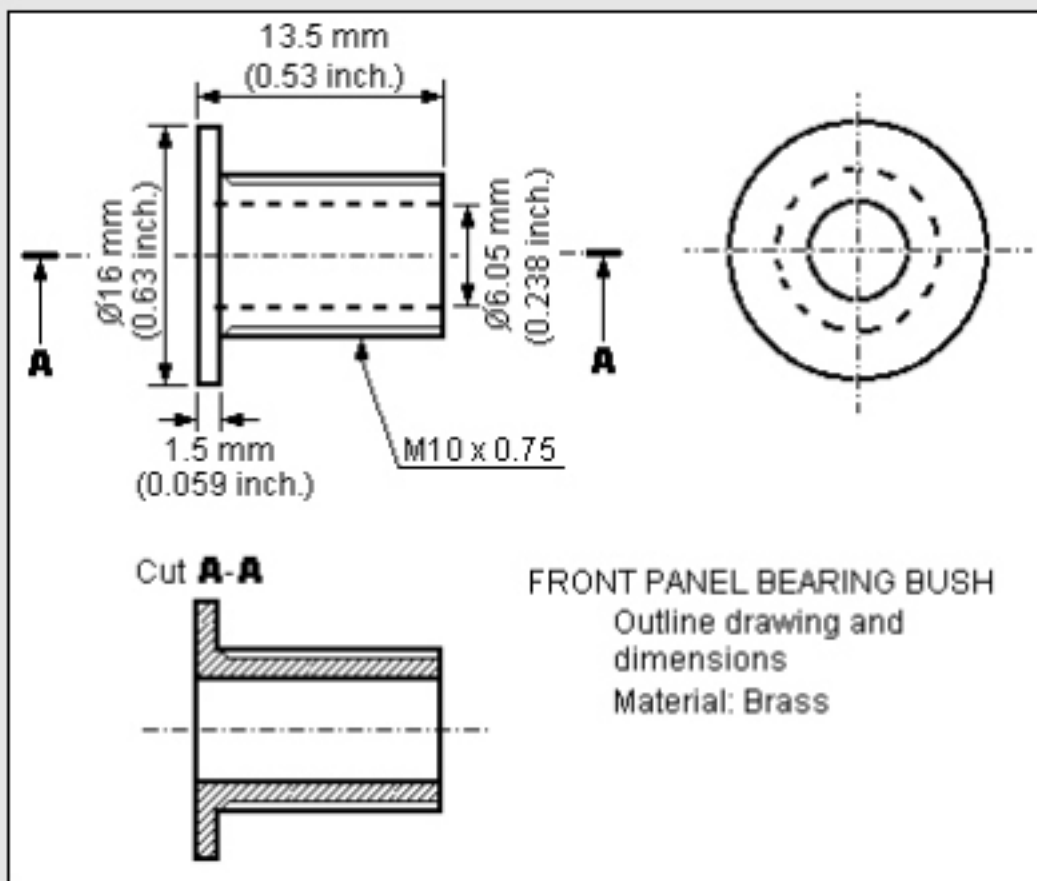
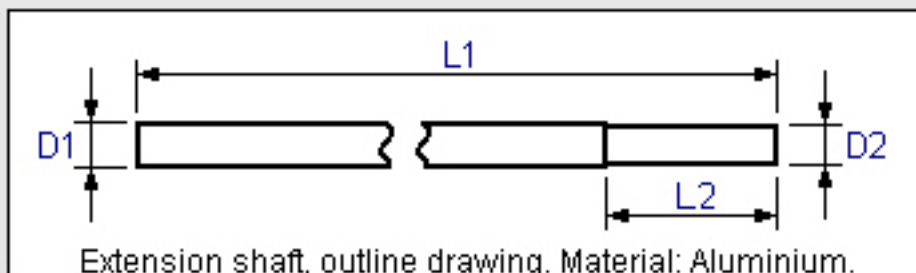
### Purpose

Without the CT-ext1 extension kit, the attenuator and the input selector switch have to be mounted in the front panel of the equipment enclosure. The purpose of the CT-ext1 shaft extension kit is to allow mounting of the DACT CT1 or CT2 audio attenuators and/or the CT3 audio input selector switch at any location within the equipment enclosure. The recommended location of both attenuator and input selector switch is as near to the signal input/output sockets as possible. In this way, the signal cables may be shortened and the sonic degradation caused by the cables will be minimized. At DACT we believe in using non-magnetic materials for audio equipment and CT-ext1 does not contain any

magnetic parts. CT-ext1 consists of:

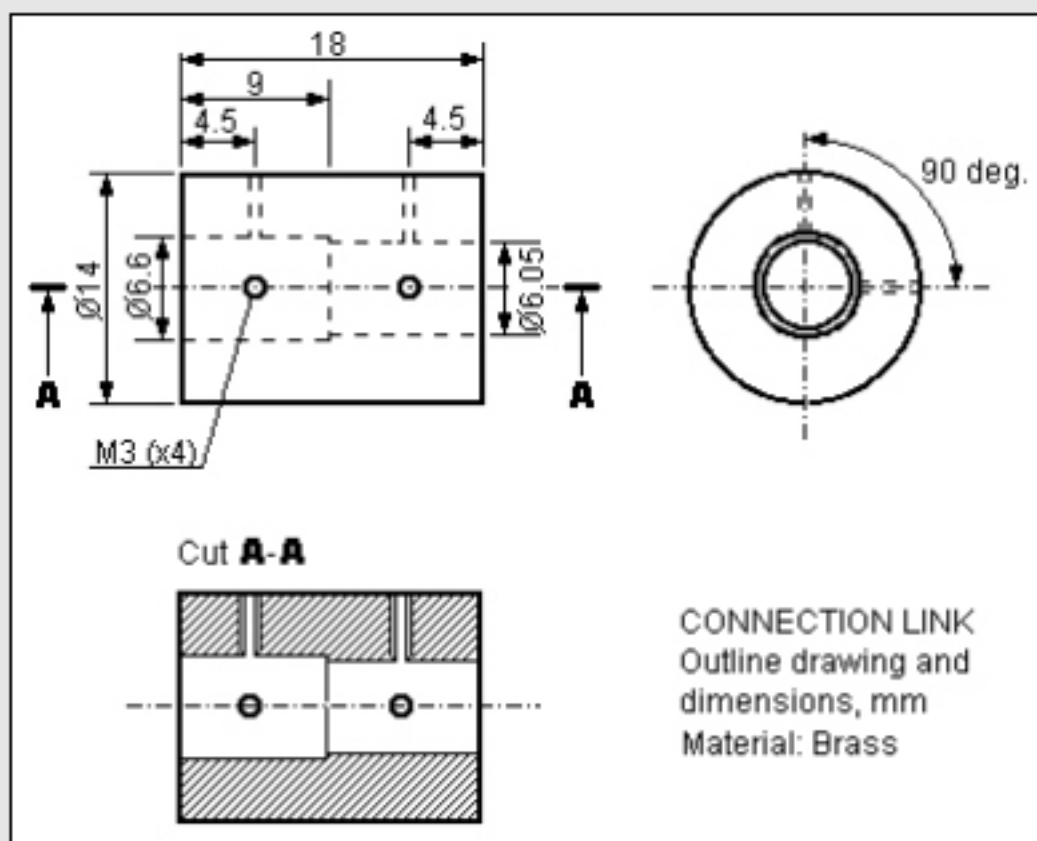
- 1 pcs Extension Shaft. When ordering please specify CT-ext1/S for a kit with a short version of the shaft (200mm = 7.9 inch.) or CT-ext1/L for a kit with a long shaft (400mm = 15.7 inch.). Shaft material: Aluminium.
- 1 pcs Connection Link. Material: Brass. The connection link includes 4 pcs M3 stainless steel screws.
- 1 pcs Front Panel Bearing Bush. Material: Brass. Includes 1 pcs M10 stainless steel nut

Extension shaft dimensions				
	Short version (CT-ext1/S)		Long version (CT-ext1/L)	
	mm	inch.	mm	inch.
L1	200	7.9	400	15.7
L2	50	1.97	50	1.97
D1	6.5	0.256	6.5	0.256
D2	5.95	0.234	5.95	0.234



### How to use CT-ext1

1. Mounting the Front Panel Bearing Bush. To mount the bush in the front panel requires a hole in the front panel of at least 10mm (0.395 inch). Preferably, the hole should not be larger than 13mm (0.512 inch). Fasten the bush using the supplied M10 stainless steel nut.
2. Mounting the Connection Link. Please observe that the mounting holes in the two ends of the link are not of equal size. The smaller hole (6.05mm = 0.238 inch.) is for fitting the link to the shaft of CT1, CT2 or CT3. The other end (hole diameter 6.6mm = 0.260 inch.) is for fitting the aluminium extension shaft. Make sure to tighten all four screws properly.



### 3. Fitting the Extension Shaft.

If the extension shaft is longer than required, it may be cut to the right length accordingly. PLEASE MAKE SURE always to cut the end of the shaft with the largest diameter. This end is to be fitted into the Connection Link, whose hole diameter will accept the diameter of the non-machined end of the shaft. Please observe that the shaft is designed to be used with a knob that has a 6.0mm hole (and not with a knob that has a 1/4" hole).