

KEY FEATURES

- Designed for compression drivers with 1" (25,4 mm) throat diameter
- Coverage angles of 60° in the horizontal plane and 40° in the vertical plane
- Precise directivity control in the band pass
- Squared and compact design, offering rotatable mounting alternatives
- Heavy-duty reinforced polycarbonate construction
- F.E.M optimized flare

TECHNICAL SPECIFICATIONS ¹

Throat diameter	25,4mm	1 in
Nominal Coverage Horizontal		60°
Nominal coverage Vertical		40°
Directivity Index (DI)	10,5 dB	
Cut-off frequency	1500 Hz	
Material	Reinforced Polycarbonate	

MOUNTING INFORMATION

Dimensions (W x H x D)	160 x 160 x 100 mm
	6,3 x 6,3 x 3,9 in
Cut-out dimensions (W x H)	118,3 x 137,3 mm
	4,65 x 5,4 in

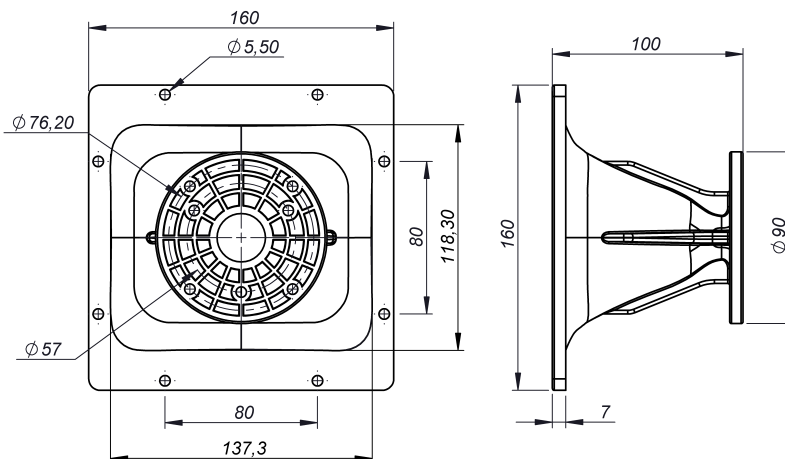
Compression driver mounting

Three M5 holes, 120° apart on 57 mm (2,24 in) diameter
Four M5 holes, 180° apart on 76,2 mm (3 in) diameter

Net weight	0,28kg
Shipping weight	0,48kg



DIMENSION DRAWING

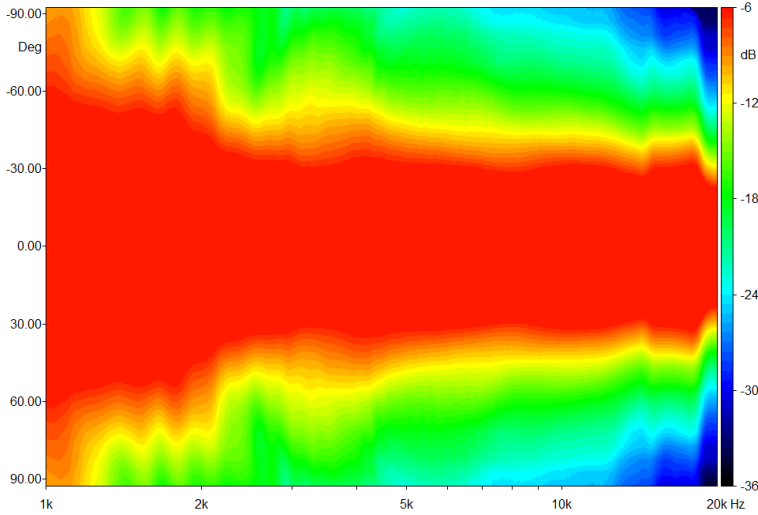


Notes:

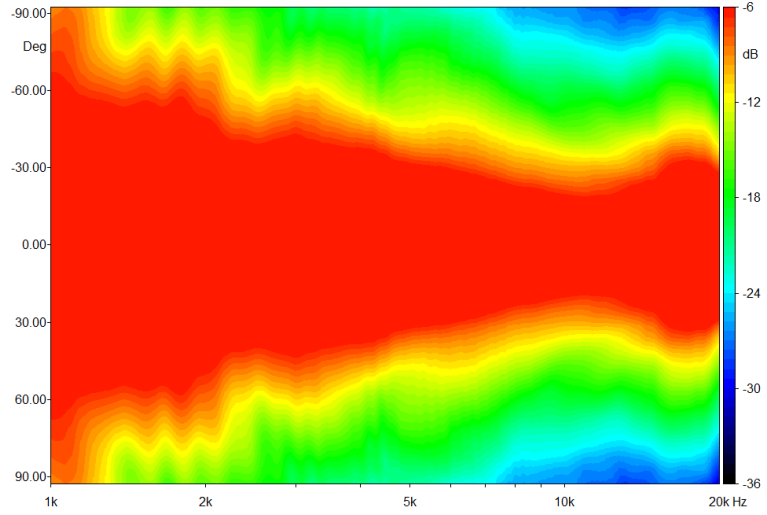
¹ Average range 1 - 16 kHz

Horn measured with Beyma CD151Fe/PK compression driver.

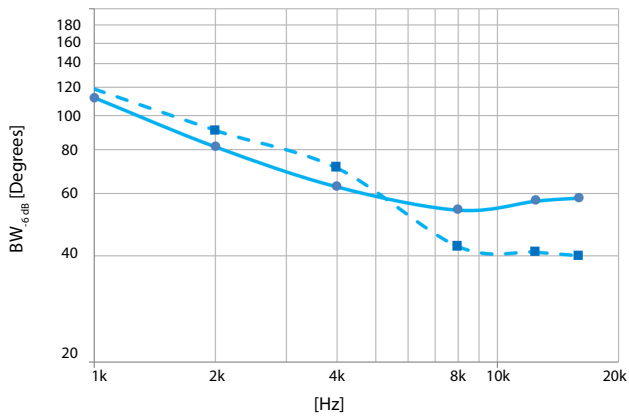
HORIZONTAL DIRECTIVITY MAP



VERTICAL DIRECTIVITY MAP

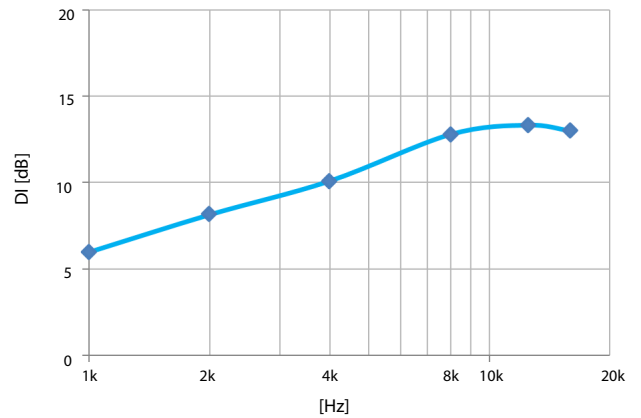


-6 dB BEAMWIDTH

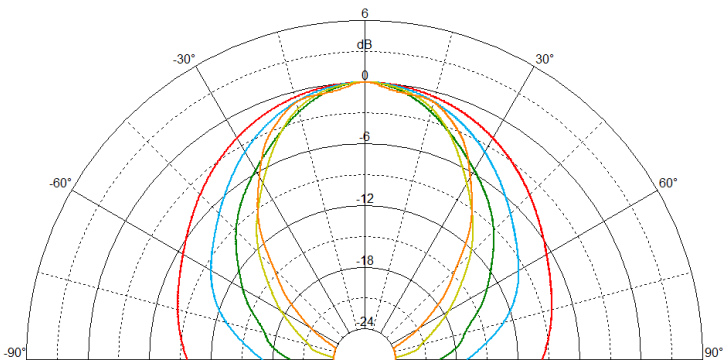


— Horizontal - - - - Vertical

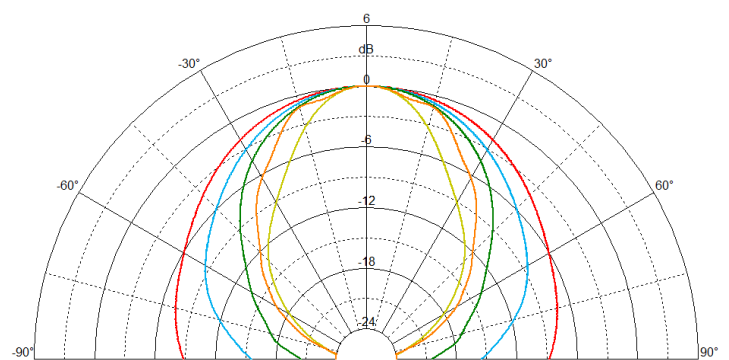
DIRECTIVITY INDEX



HORIZONTAL POLAR PATTERN



VERTICAL POLAR PATTERN



— 1 kHz — 2 kHz — 4 kHz — 8 kHz — 16 kHz