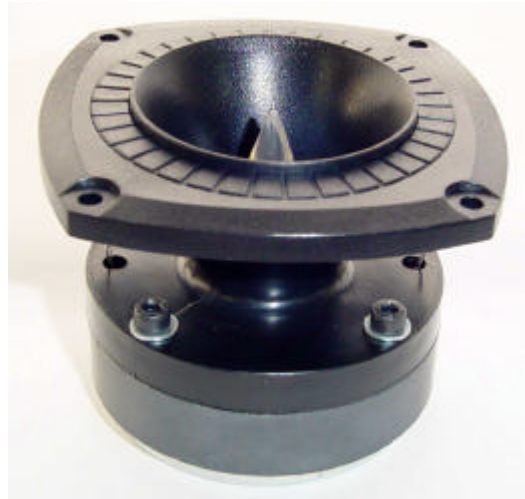


CP 1215

HIGH FREQUENCY COMPRESSION DRIVER

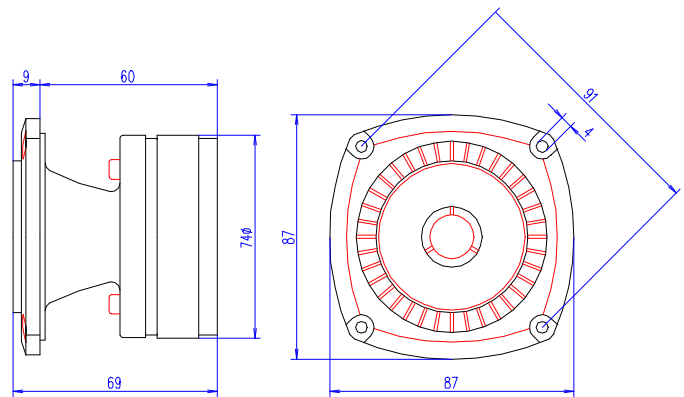
DESCRIPTION

The CP 12151 super tweeter produces a very high output sound level with flat response and excellent transient attacks. This model features a lightweight aluminium diaphragm assembly, which is field replaceable without soldering. This model can handle long term power signal without damage.



SPECIFICATIONS

Throat diameter	25 mm - 1"
Rated impedance	8 ohms
Minimum impedance	8.5 ohms @ 10 kHz
D.C. Resistance	7.3 Ohms
Power capacity	60 Watts (IEC 268-5, @ 6kHz, 18dB/oct.)
Sensitivity	105 dB, 1W @ 1m
Frequency range	2 - 20 kHz
Recommended crossover frequency	5 KHz, 18 dB/oct.
Voice coil diameter	25.8 mm 1"
Magnetic assembly weight	25.8 Kg 1.1 lb
Flux density	1.4 T
Bl factor	4 N/A



MOUNTING INFORMATION

Overall diameter	87 x 87 mm - 3.4" x 3.4"
Depth	69 mm 2.7"
Baffle cutout diameter	74 mm 2.91"
Bolt circle diameter	91 mm 3.58"
Net weight	0.6 kg 1.32 lb
Sipping weight	0.7 kg 1.54 lb

MATERIALS

Diaphragm	Aluminium
Voice coil	Copper wire
Voice coil former	Kapton
Magnet	Ferrite

