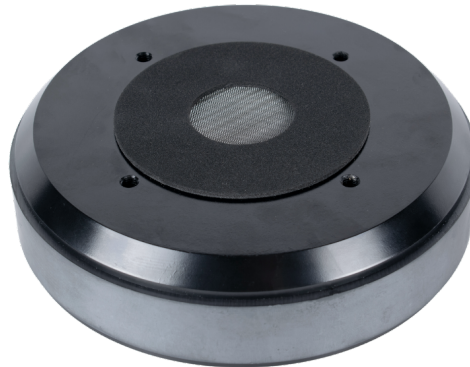


## KEY FEATURES

- Next generation high performance 1,4" (36 mm) exit compression driver
- Deplocex® Patent Pending Technology for improved thermal dissipation, low power compression losses and high power handling
- 3" (76,2 mm) Copper Clad Aluminum voice coil with Nomex former
- 260 W program power above 1,2 kHz
- Sensitivity: 109 dB (1W / 1m)
- Exclusive Titanium dome and surround design optimized with F.E.M for linear and extended response with minimized resonances
- Copper shorting cap for reduced distortion, linear inductance and increased output
- Proprietary design of metal alloy phase plug with F.E.M optimized geometry and improved assembly design
- F.E.M. optimized ceramic magnetic circuit
- Aluminium cover



## TECHNICAL SPECIFICATIONS

<b>Throat diameter</b>	36 mm	1,4 in
<b>Rated impedance</b>		8 $\Omega$
<b>Minimum impedance</b>		5,6 $\Omega$
<b>D.C. resistance</b>		4,4 $\Omega$
<b>Power capacity</b> <sup>1</sup>	90 W <sub>AES</sub> above 0,8 kHz	
	130 W <sub>AES</sub> above 1,2 kHz	
<b>Program power</b> <sup>2</sup>	180 W above 0,8 kHz	
	260 W above 1,2 kHz	
<b>Sensitivity</b> <sup>3</sup>	109 dB	1W / 1m @ Z <sub>N</sub> coupled to TD-385

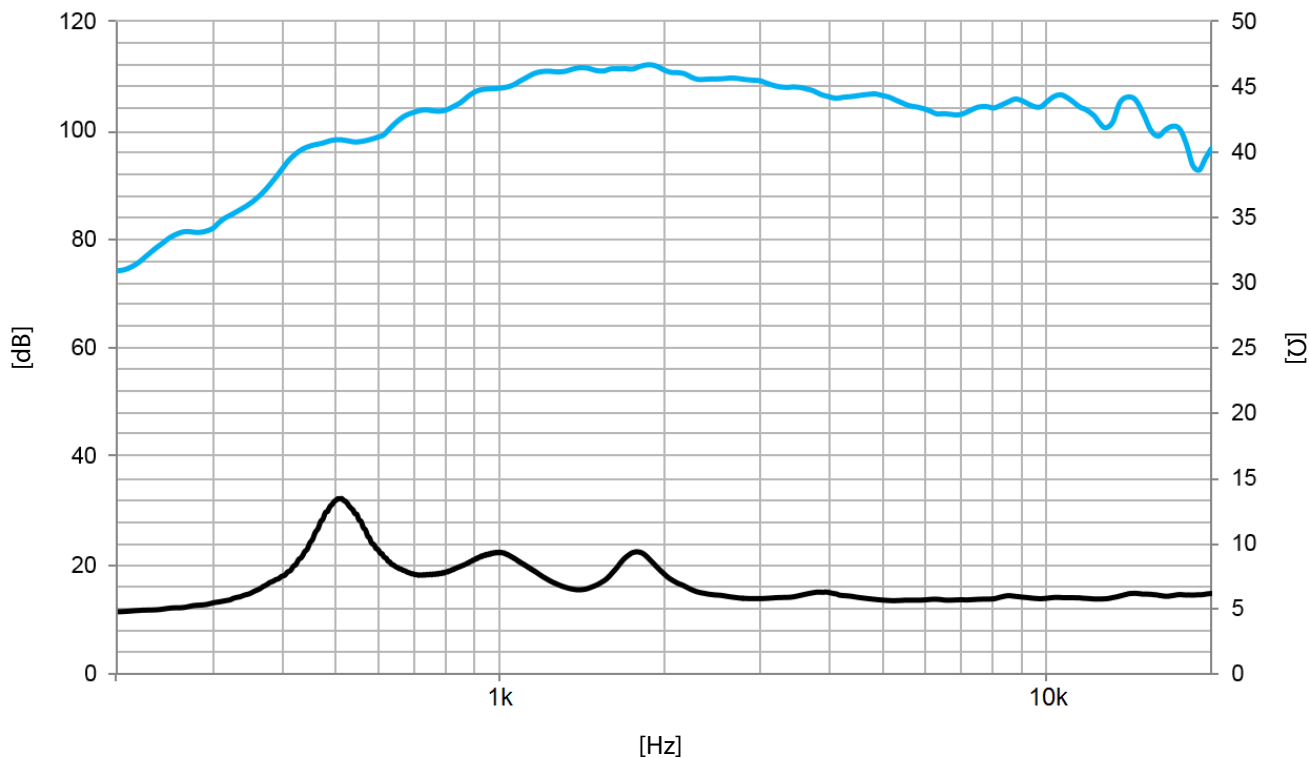
<b>Frequency range</b>	0,6 - 20 kHz
<b>Recommended crossover</b>	0,8 kHz or higher (12 dB/oct min.)
<b>Voice coil diameter</b>	76,2 mm 3 in
<b>Flux density</b>	1,8 T
<b>BI factor</b>	9,5 N/A

### Notes:

<sup>1</sup> The power capacity is determined according to AES2-1984 (r2003) standard.

<sup>2</sup> Program power is defined as the transducer's ability to handle normal music program material.

<sup>3</sup> Sensitivity was measured at 1m distance, on axis, with 1W input, averaged in the range 1 - 7 kHz



Note: On axis frequency response measured coupled to TD-385 horn in anechoic chamber, 1W / 1m

### MOUNTING INFORMATION

<b>Overall diameter</b>	165 mm	6,5 in
<b>Depth</b>	69,6 mm	2,74 in
<b>Mounting</b>	Four M6 threaded holes, 90° apart on 101,6 mm (4 in) diameter circle	
<b>Net weight</b>	5,4 kg	11,9 lb
<b>Shipping weight</b>	5,6 kg	12,34 lb

### DIMENSION DRAWING

